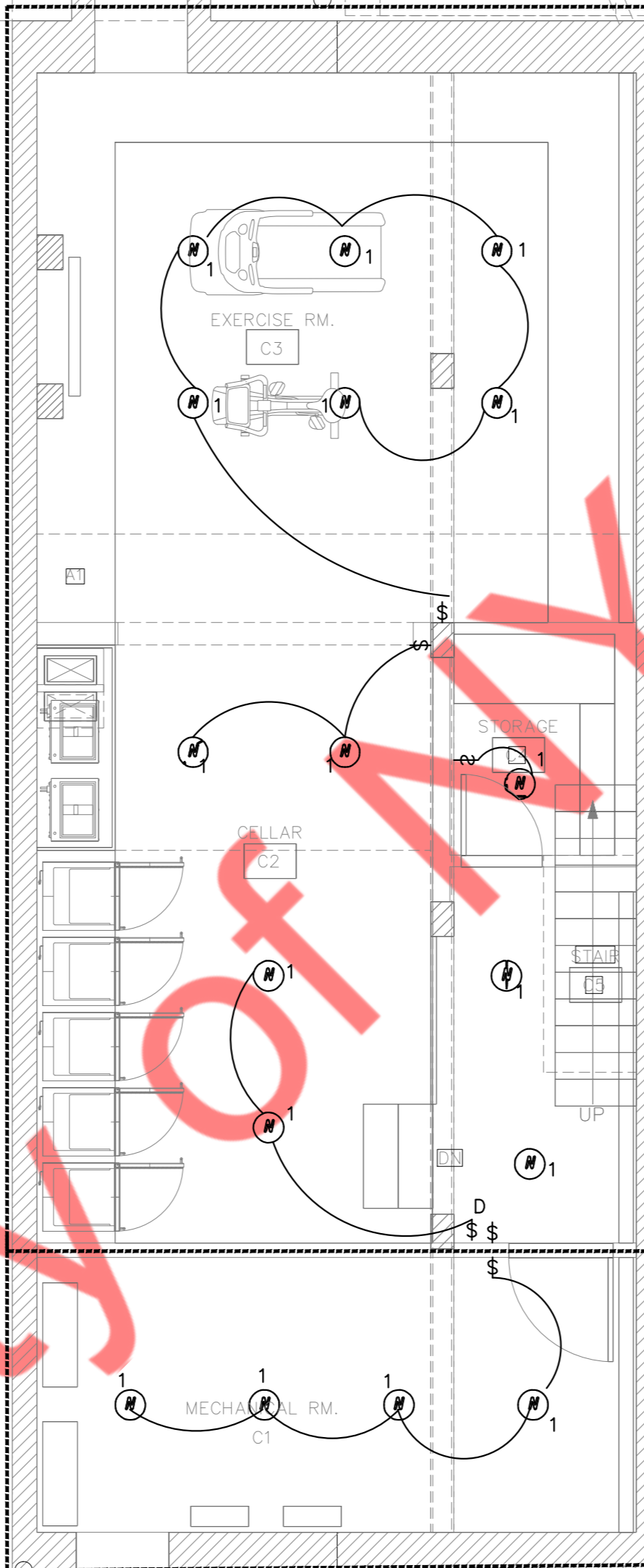


ALL BRANCH CIRCUITS LOCATED IN THIS AREA SHALL BE CIRCUITED TO PANEL "AP-Q2", CIRCUIT NUMBERS INDICATED, U.O.N.



ALL BRANCH CIRCUITS LOCATED IN THIS AREA SHALL BE CIRCUITED TO PANEL "HP-01", CIRCUIT NUMBERS INDICATED, U.O.N.

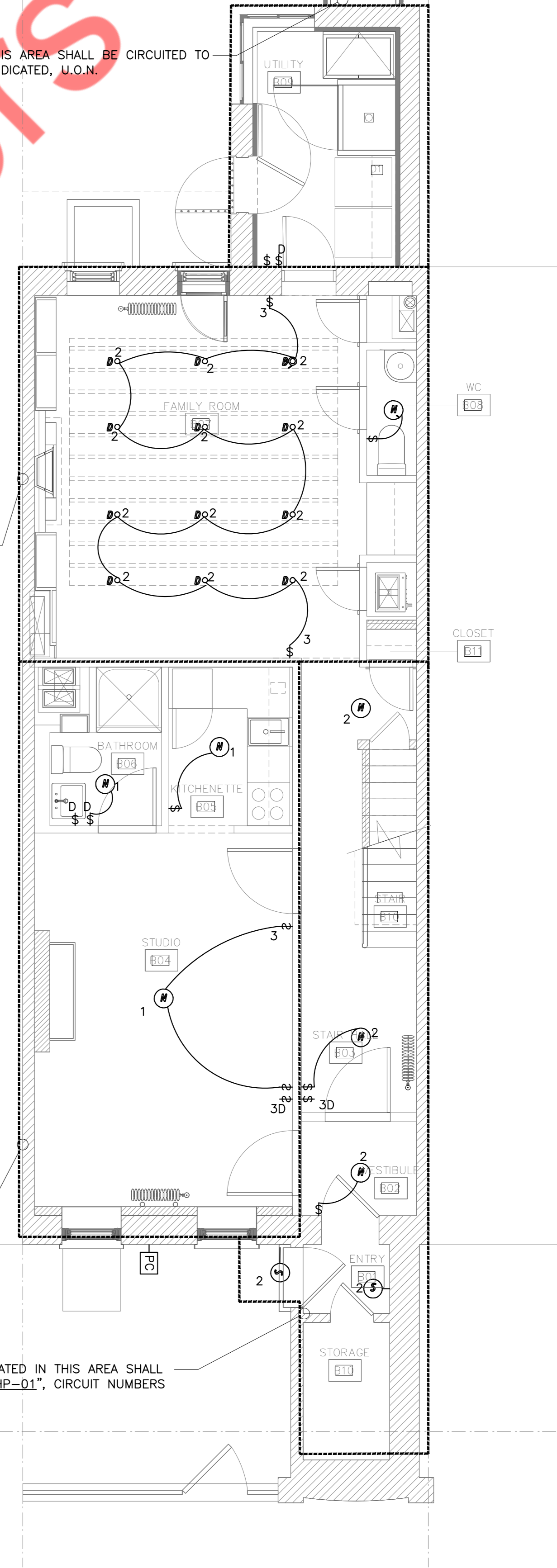
1 CELLAR LIGHTING PLAN
SCALE: 1/4"=1'-0"

ALL BRANCH CIRCUITS LOCATED IN THIS AREA SHALL BE CIRCUITED TO PANEL "HP-01", CIRCUIT NUMBERS INDICATED, U.O.N.

ALL BRANCH CIRCUITS LOCATED IN THIS AREA SHALL BE CIRCUITED TO PANEL "AP-Q2", CIRCUIT NUMBERS INDICATED, U.O.N.

ALL BRANCH CIRCUITS LOCATED IN THIS AREA SHALL BE CIRCUITED TO PANEL "AP-01", CIRCUIT NUMBERS INDICATED, U.O.N.

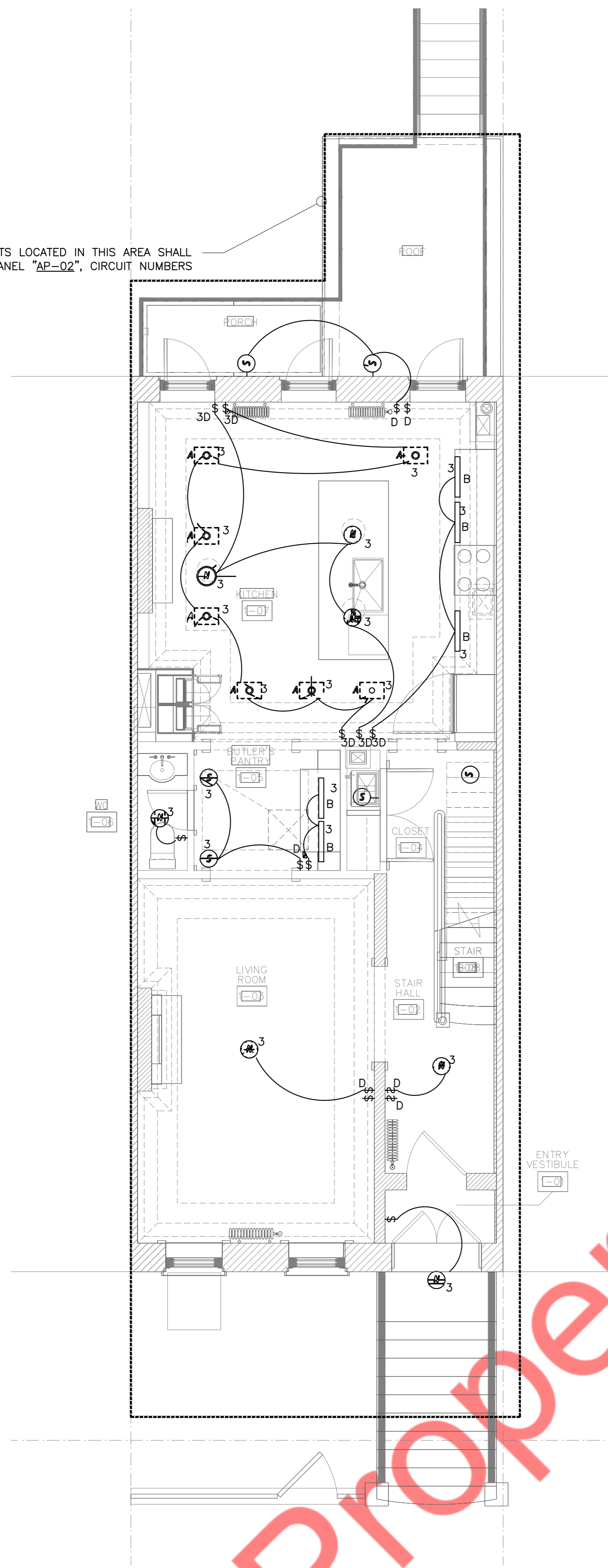
ALL BRANCH CIRCUITS LOCATED IN THIS AREA SHALL BE CIRCUITED TO PANEL "HP-01", CIRCUIT NUMBERS INDICATED, U.O.N.



2 BASMENT LIGHTING PLAN
SCALE: 1/4"=1'-0"

Property of NY Engineers

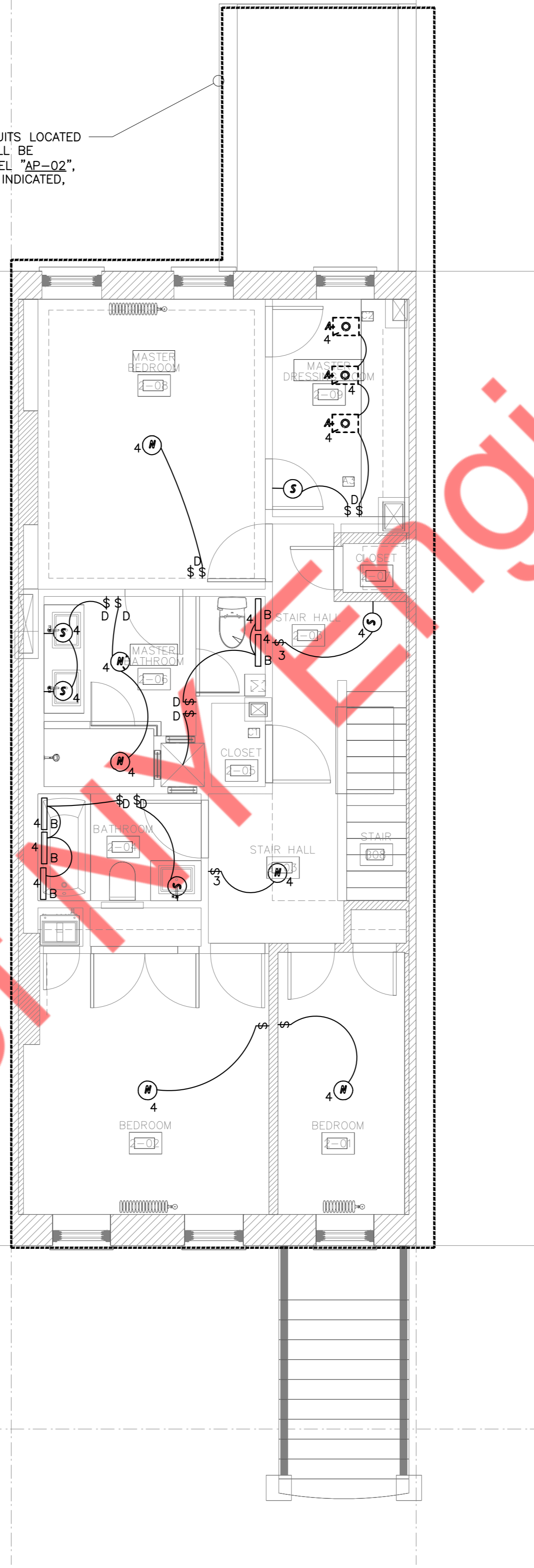
ALL BRANCH CIRCUITS LOCATED IN THIS AREA SHALL BE CIRCUITED TO PANEL "AP-02", CIRCUIT NUMBERS INDICATED, U.O.N.



3

1ST FLOOR LIGHTING PLAN
SCALE: 1/4"=1'-0"

ALL BRANCH CIRCUITS LOCATED IN THIS AREA SHALL BE CIRCUITED TO PANEL "AP-02", CIRCUIT NUMBERS INDICATED, U.O.N.

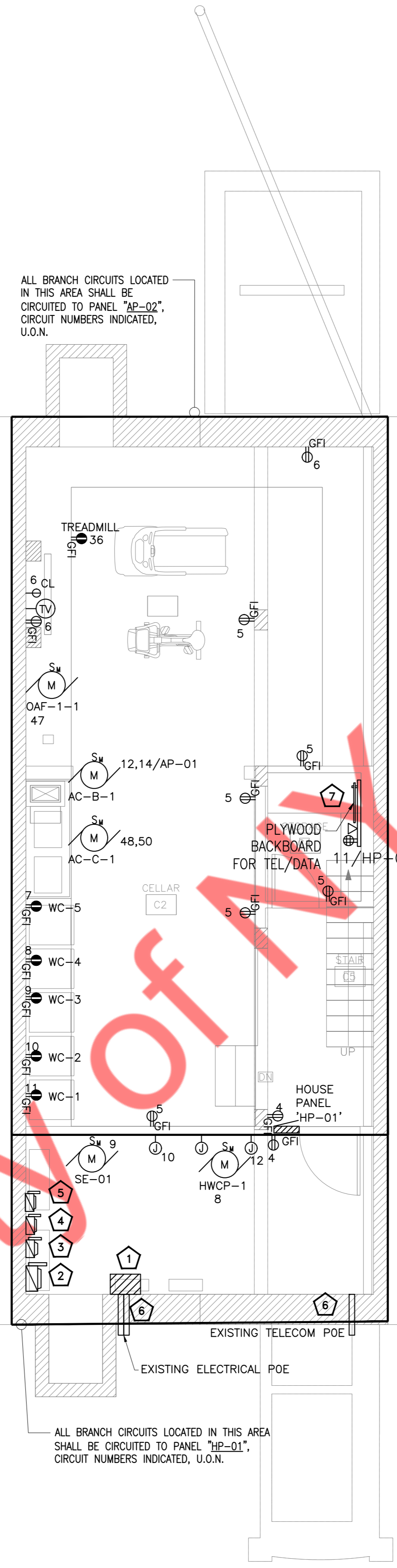


4

2ND FLOOR LIGHTING PLAN
SCALE: 1/4"=1'-0"

ELECTRICAL POWER NOTE
 ALL RECEPTACLES IN DWELLING UNIT SHALL BE TAMPER RESISTANT

- ELECTRICAL KEYED NOTE
- 1 SERVICE END BOX CON-ED SPEC EP-9525-B (400A)
 - 2 200A DISCONNECT SWITCH AND METER STACKED
 - 3 100A DISCONNECT SWITCH AND METER STACKED
 - 4 60A DISCONNECT SWITCH AND METER STACKED
 - 5 60A DISCONNECT SWITCH FOR FUTURE SOLAR SYSTEM
 - 6 CONTRACTOR TO FIELD VERIFY THE EXACT LOCATION OF POE ON SITE.
 - 7 INSTALL 4"x12" COPPER GROUND BAR WITH INSULATED STANDOFFS AND PRE-DRILLED WITH 1/4" HOLES IN LEFT REAR CORNER.



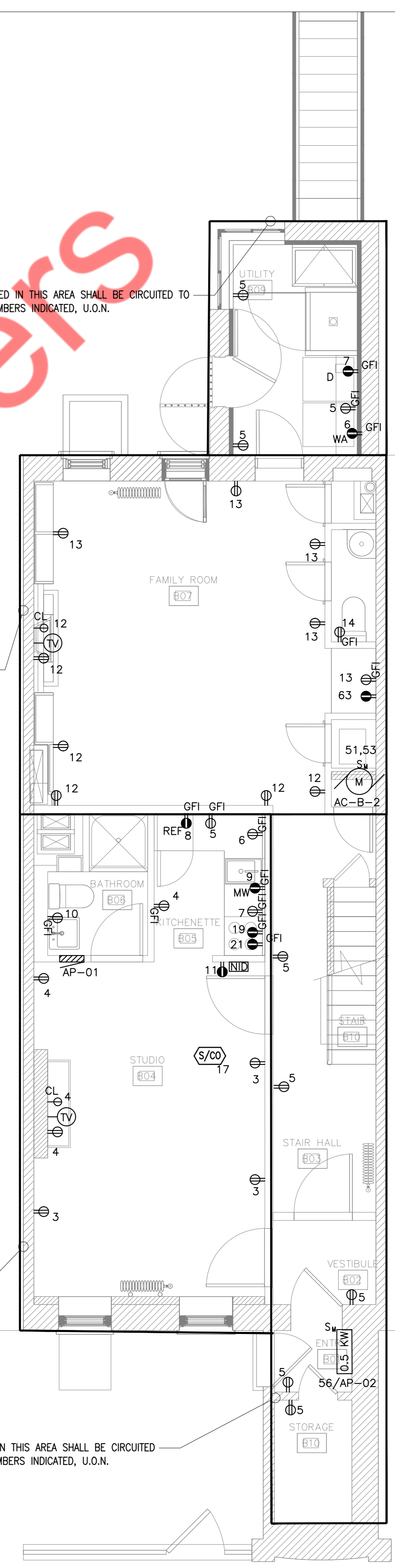
1 CELLAR POWER PLAN
 SCALE: 1/4"=1'-0"

ALL BRANCH CIRCUITS LOCATED IN THIS AREA SHALL BE CIRCUITED TO PANEL "HP-01", CIRCUIT NUMBERS INDICATED, U.O.N.

ALL BRANCH CIRCUITS LOCATED IN THIS AREA SHALL BE CIRCUITED TO PANEL "AP-02", CIRCUIT NUMBERS INDICATED, U.O.N.

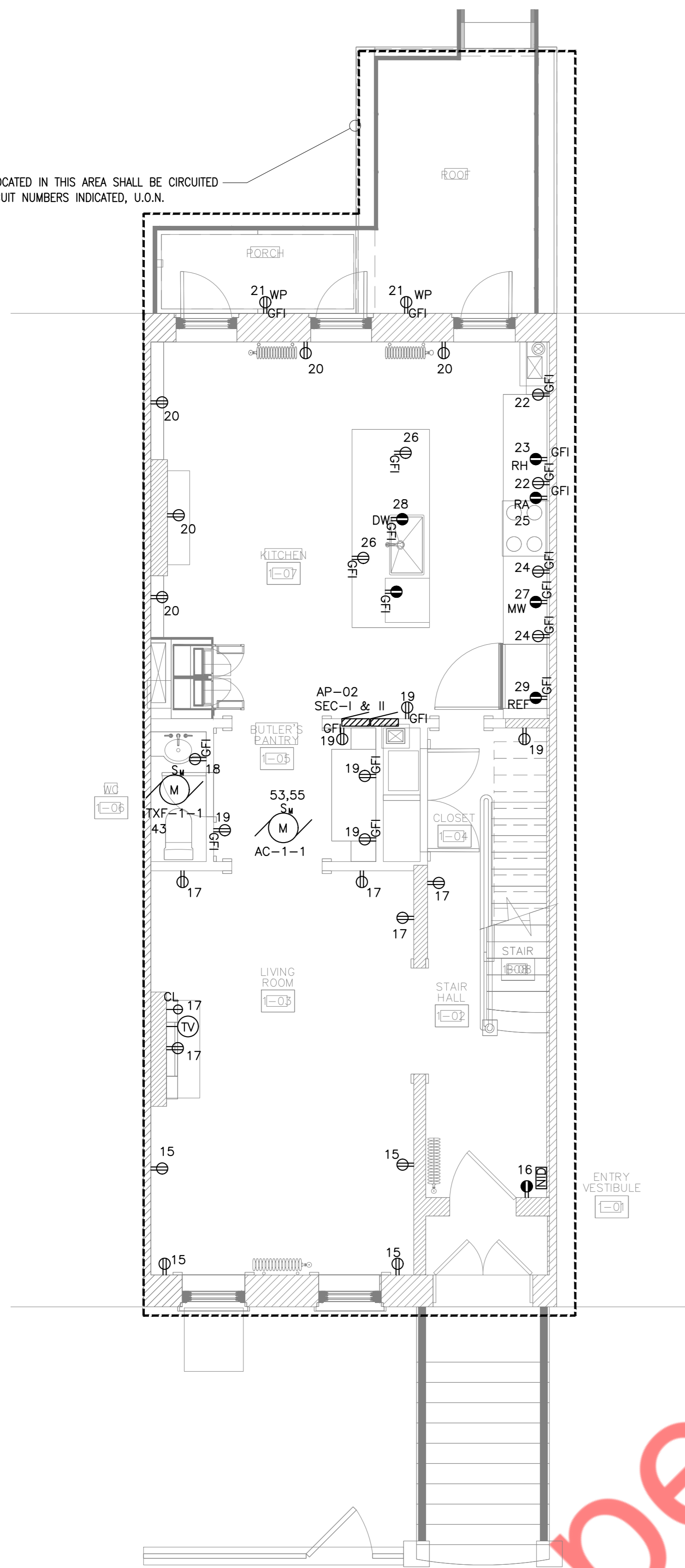
ALL BRANCH CIRCUITS LOCATED IN THIS AREA SHALL BE CIRCUITED TO PANEL "AP-01", CIRCUIT NUMBERS INDICATED, U.O.N.

ALL BRANCH CIRCUITS LOCATED IN THIS AREA SHALL BE CIRCUITED TO PANEL "HP-01", CIRCUIT NUMBERS INDICATED, U.O.N.



2 BASMENT POWER PLAN
 SCALE: 1/4"=1'-0"

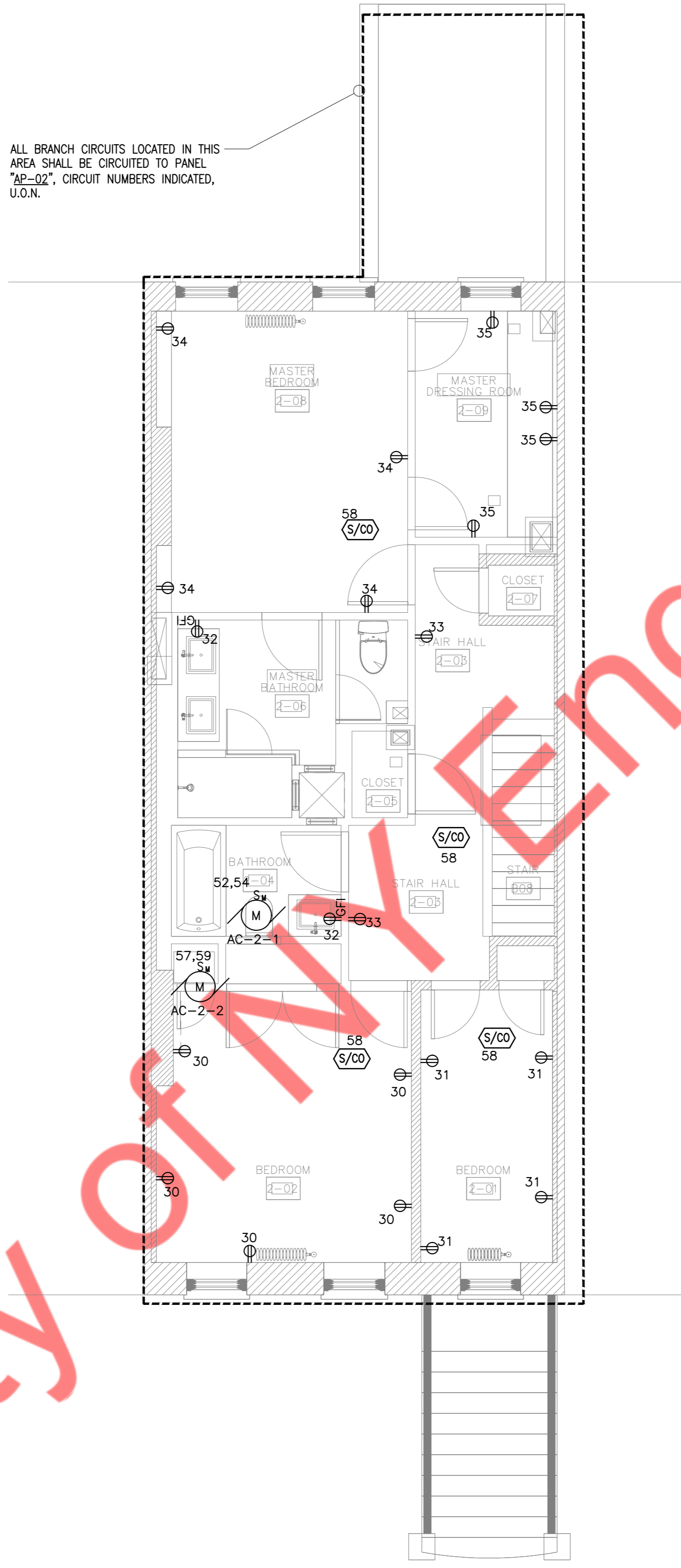
ALL BRANCH CIRCUITS LOCATED IN THIS AREA SHALL BE CIRCUITED TO PANEL "AP-02", CIRCUIT NUMBERS INDICATED, U.O.N.



3

1ST FLOOR POWER PLAN
SCALE: 1/4"=1'-0"

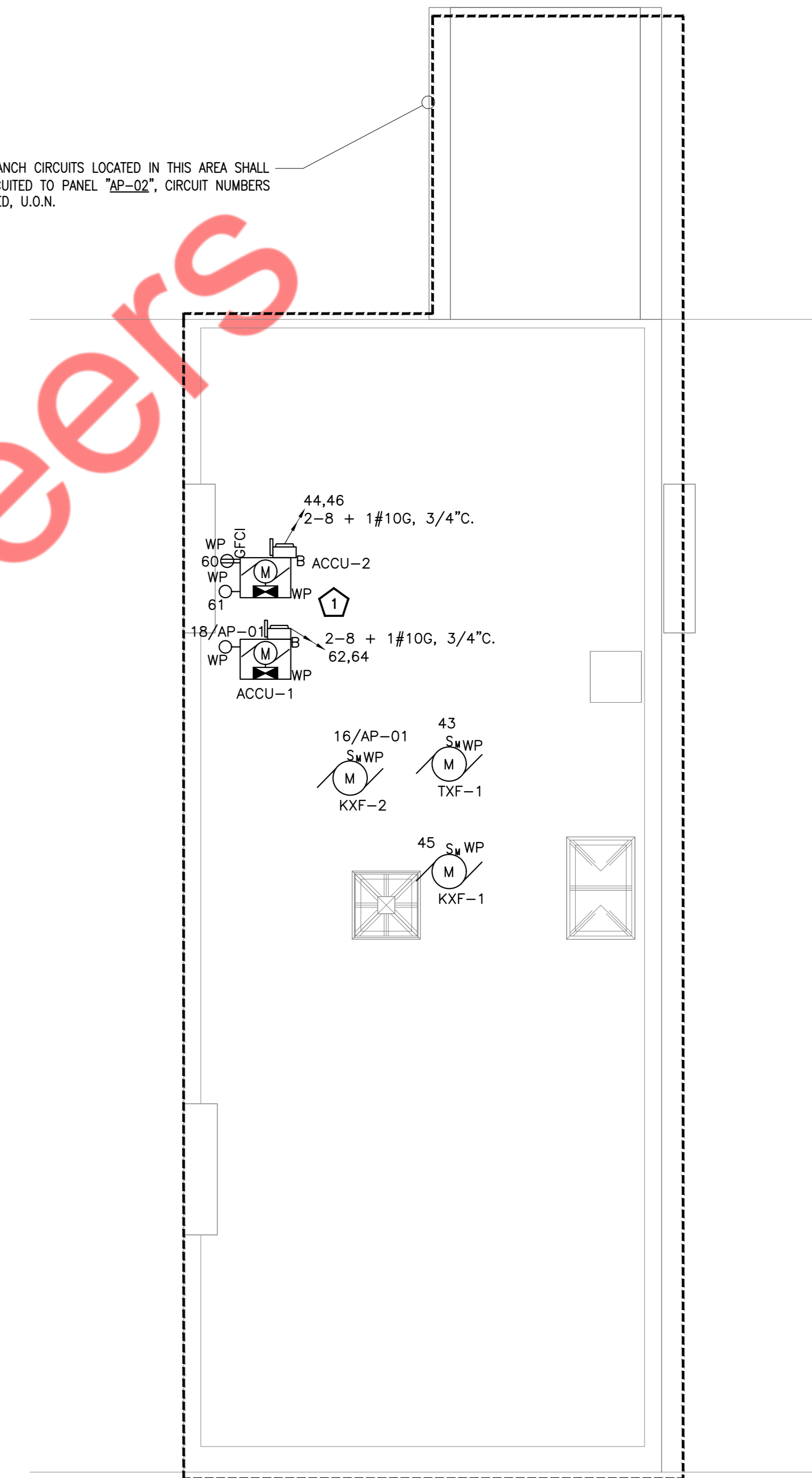
ALL BRANCH CIRCUITS LOCATED IN THIS AREA SHALL BE CIRCUITED TO PANEL "AP-02", CIRCUIT NUMBERS INDICATED, U.O.N.



4

2ND FLOOR POWER PLAN
SCALE: 1/4"=1'-0"

ALL BRANCH CIRCUITS LOCATED IN THIS AREA SHALL BE CIRCUITED TO PANEL "AP-02", CIRCUIT NUMBERS INDICATED, U.O.N.



5

ROOF POWER PLAN
SCALE: 1/4"=1'-0"

KEYED NOTE

⬠ LIGHT FIXTURE WITH LOCAL SWITCH FOR MANUAL ON/OFF ARE MOUNTED ON KINDORF SUPPORT

ELECTRICAL POWER NOTE

ALL RECEPTACLES IN DWELLING UNIT SHALL BE TAMPER RESISTANT