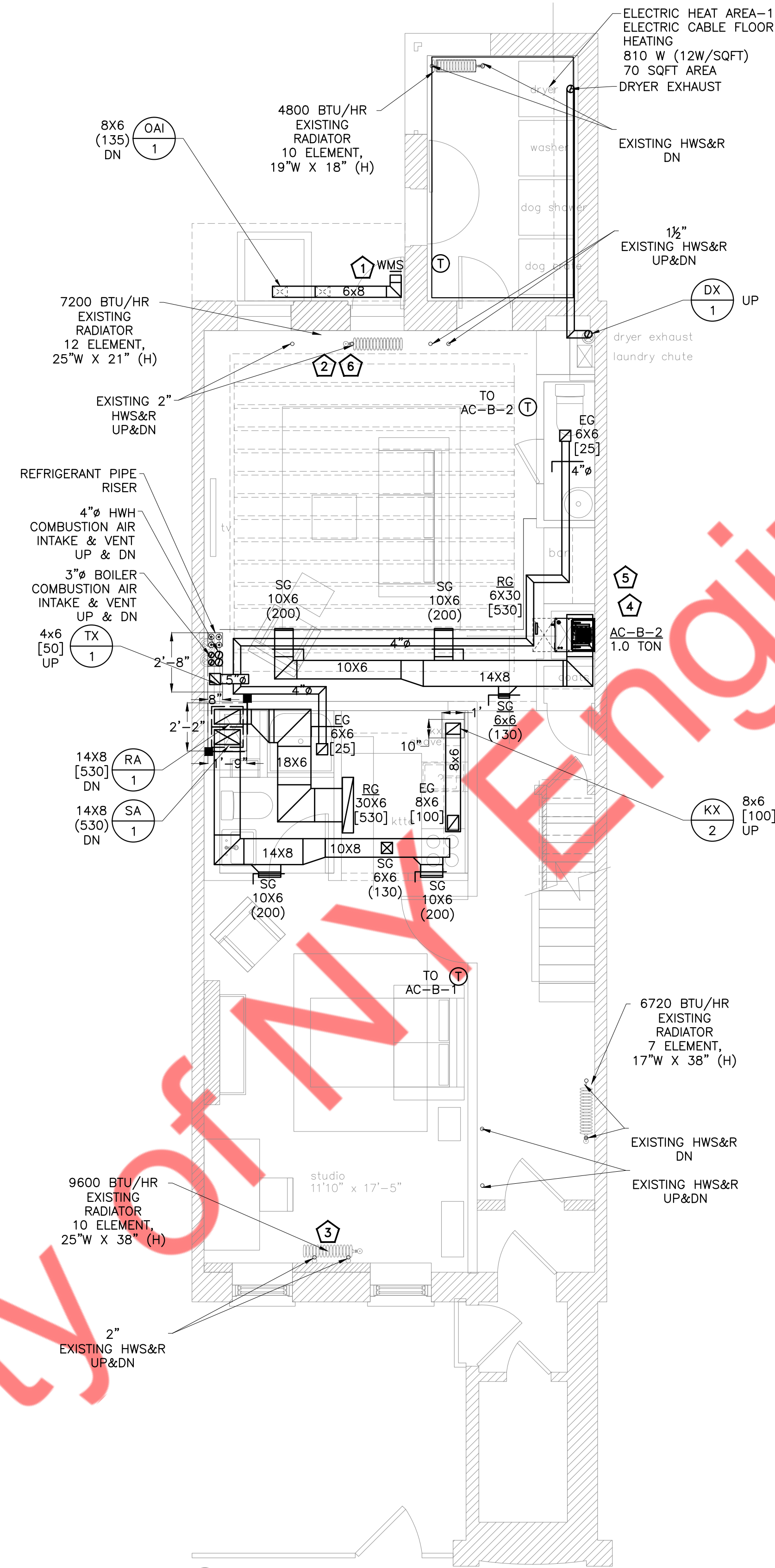


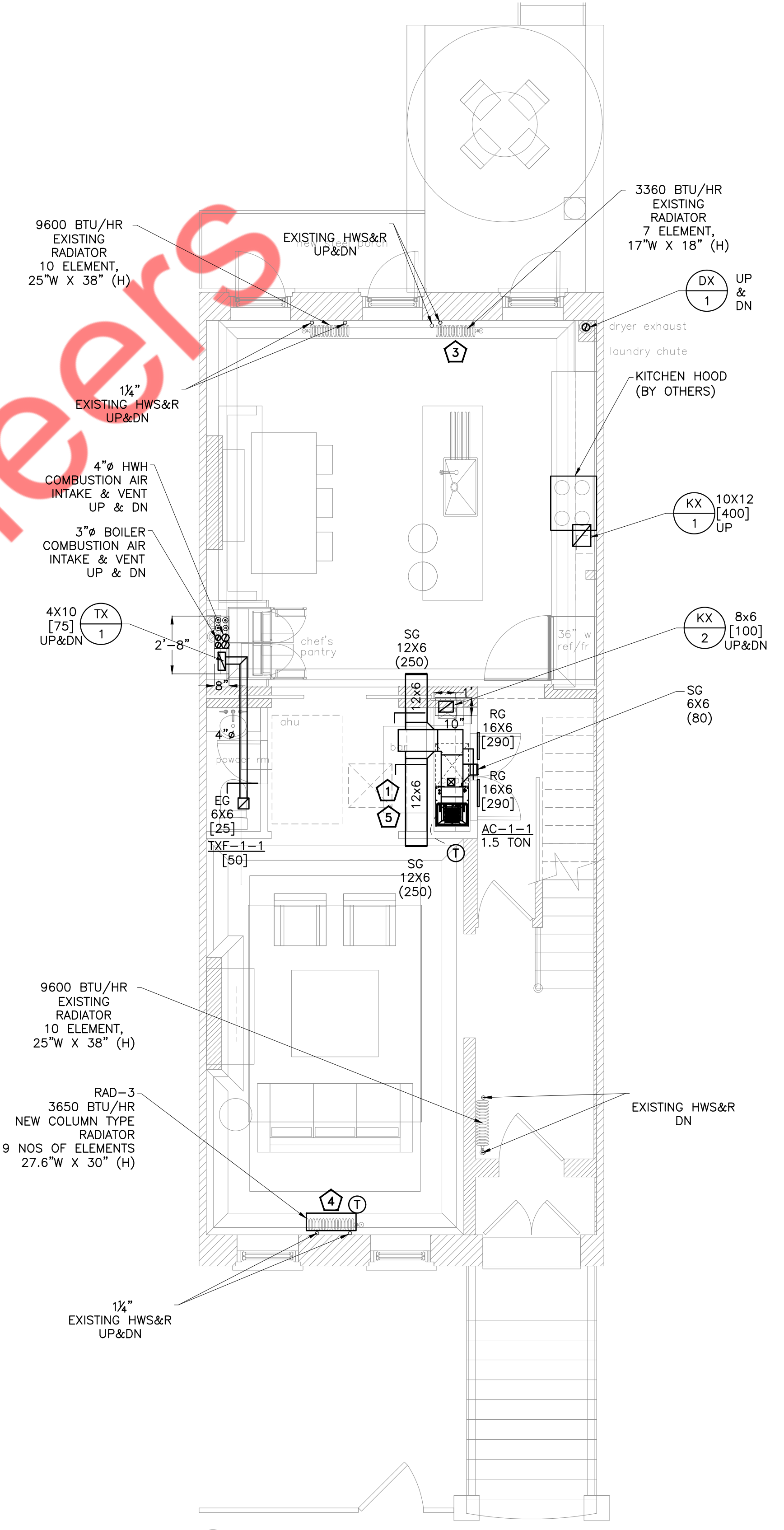
1 CELLAR MECHANICAL PLAN
SCALE: 1/4"=1'-0"

- KEY NOTES:
- OUTDOOR AIR TEMP.SENSOR WIRED TO TEKMAR CONTROLLER. LOCATE OUTDOOR TEMP.SENSOR OUT OF DIRECT SUN LIGHT & AWAY FROM ANY HEAT SOURCE.
 - BREAK GLASS SWITCH CONNECT TO LIFE SAFETY PANEL, QUANTITY: 2
 - CONTRACTOR TO PROVIDE LEAK DETECTOR SENSOR FOR BOILER AND CONNECT TO LIFE SAFETY SYSTEM.
 - HWS&R FROM GAS FIRED BOILER TO BE CONNECTED TO EXISTING HOT WATER RISER IN-ORDER CONNECT TO EXISTING RADIATOR PANELS.
 - 1" CD WITH CONDENSATE DRAIN PUMP TO LAVATORY WASTE W/ AIR GAP FITTING. COORDINATE W/ PLUMBING DRAWING.
 - PLEASE REFER BOILER ROOM SCHEMATIC ON 3/M-102.00 FOR VALVES AND OTHER ACCESSORIES REQUIREMENTS.
 - FLOOR MOUNTED VERTICAL AC UNIT TO BE INSTALLED ON STAND OF MINIMUM 14" IN HEIGHT WITH RETURN PLENUM AT BOTTOM OF UNIT.
 - FLOOR MOUNTED VERTICAL AC UNIT TO BE INSTALLED ON STAND OF MINIMUM 14" IN HEIGHT.



2 BASMENT MECHANICAL PLAN
SCALE: 1/4"=1'-0"

- KEY NOTES:
- INTAKE FOR OAF-1 TO BE TERMINATED WITH WIRE MESH & GOOSE NECK, ABOVE THE DOOR AT THE CENTER LINE BETWEEN LOT LINES AS THE WIDTH OF BUILDING IS LESS THAN 20 FEET.
 - DISCONNECT, MOVE AND REINSTALL THE RADIATOR ALONG WITH ALL THE ACCESSORIES ON THE WALL BETWEEN WINDOW AND DOOR.
 - DISCONNECT, MOVE AND REINSTALL THE RADIATOR ALONG WITH ALL ITS ACCESSORIES IN KITCHEN ON 1ST FLOOR. EXCHANGE THIS RADIATOR WITH 3360 BTU/HR RADIATOR.
 - FLOOR MOUNTED VERTICAL AC UNIT TO BE INSTALLED ON STAND OF MINIMUM 14" IN HEIGHT.
 - 1" CD WITH CONDENSATE DRAIN PUMP TO LAVATORY WASTE W/ AIR GAP FITTING. COORDINATE W/ PLUMBING DRAWING.
 - FIELD VERIFY THE LOCATION OF HOT WATER SUPPLY AND RETURN RISER AND OFFSET THEM TO ACCOMMODATE THE NEW DOOR, IF REQUIRED.
- GENERAL NOTES:
- INDICATED THERMOSTAT LOCATIONS ARE TENTATIVE., WHICH TO BE FINALIZED AS PER ARCHITECT INTENT.
 - PROVIDE 2" OUTSIDE INSULATION TO OA DUCT



3 1ST FLOOR MECHANICAL PLAN
SCALE: 1/4"=1'-0"

- KEY NOTES:
- 1" CD WITH CONDENSATE DRAIN PUMP TO LAVATORY WASTE W/ AIR GAP FITTING. COORDINATE W/ PLUMBING DRAWING.
 - PROVIDE ACCESS PANEL OF 28"x18" FOR AC UNIT ACCESS.
 - DISCONNECT, MOVE AND REINSTALL THE RADIATOR ALONG WITH ALL ITS ACCESSORIES IN STUDIO ON BASEMENT FLOOR. EXCHANGE THIS RADIATOR WITH 9600 BTU/HR RADIATOR.
 - REMOVE THE EXISTING RADIATOR WITH ALL ITS ACCESSORIES AND REPLACE WITH NEW RADIATOR OF 3650 BTU/H CAPACITY.
 - FLOOR MOUNTED VERTICAL AC UNIT TO BE INSTALLED ON STAND OF MINIMUM 14" IN HEIGHT.
- GENERAL NOTES:
- INDICATED THERMOSTAT LOCATIONS ARE TENTATIVE., WHICH TO BE FINALIZED AS PER ARCHITECT INTENT.

