

ALL BRANCH CIRCUITS LOCATED IN THIS AREA SHALL BE CIRCUITED TO PANEL "AP-1", CIRCUIT NUMBERS INDICATED, U.O.N.

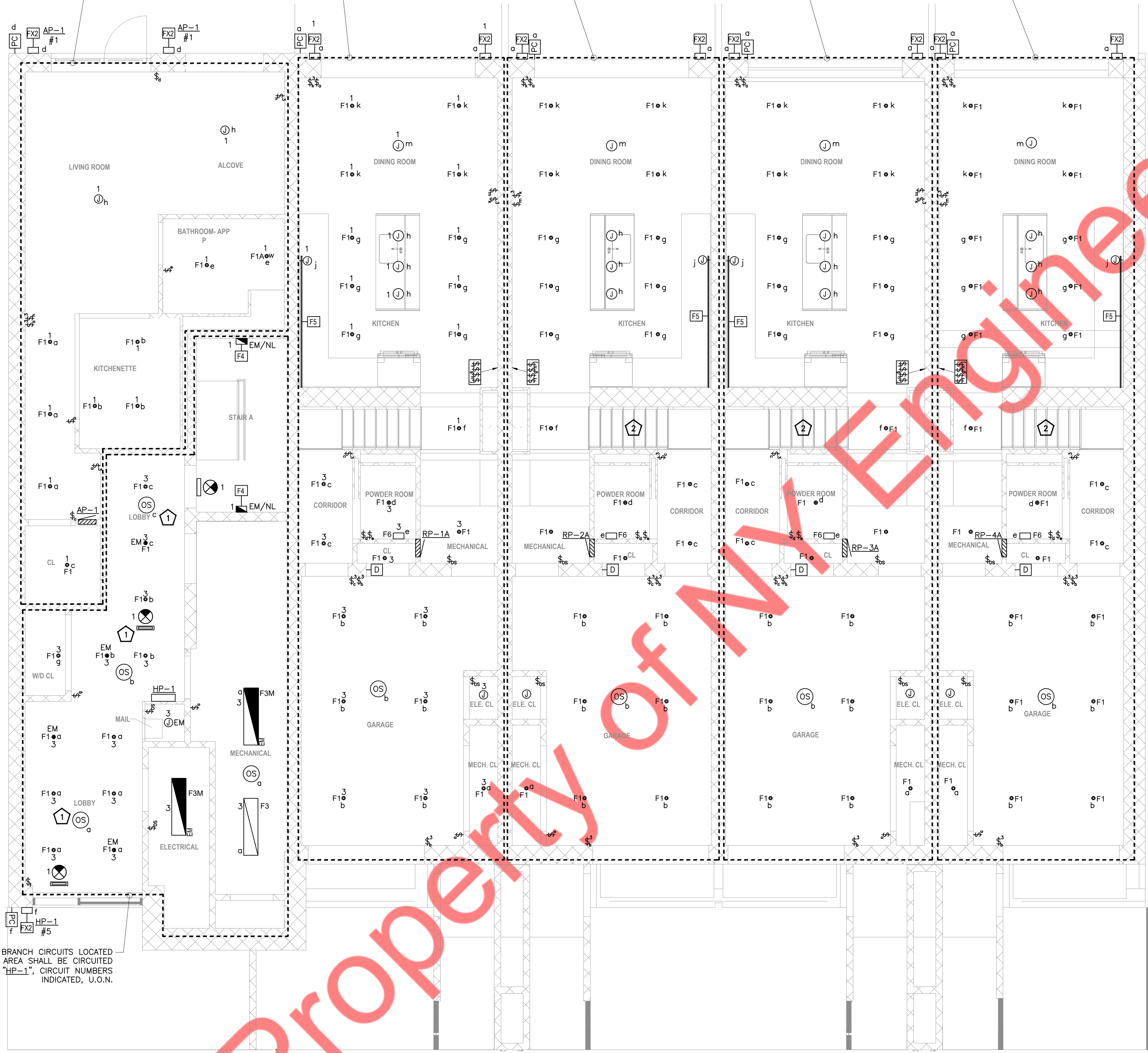
ALL BRANCH CIRCUITS LOCATED IN THIS AREA SHALL BE CIRCUITED TO PANEL "RP-1A", CIRCUIT NUMBERS INDICATED, U.O.N.

ALL BRANCH CIRCUITS LOCATED IN THIS AREA SHALL BE CIRCUITED TO PANEL "RP-2A", CIRCUIT NUMBERS INDICATED, U.O.N.

ALL BRANCH CIRCUITS LOCATED IN THIS AREA SHALL BE CIRCUITED TO PANEL "RP-3A", CIRCUIT NUMBERS INDICATED, U.O.N.

ALL BRANCH CIRCUITS LOCATED IN THIS AREA SHALL BE CIRCUITED TO PANEL "RP-4A", CIRCUIT NUMBERS INDICATED, U.O.N.

ALL BRANCH CIRCUITS LOCATED IN THIS AREA SHALL BE CIRCUITED TO PANEL "HP-1", CIRCUIT NUMBERS INDICATED, U.O.N.



KEYED WORK NOTES:

- 1 TURN ON ALL LIGHTS IN THE CORRIDOR AREA WITH ACTUATION OF ANY OCCUPANCY SENSOR.
- 2 REFER TYPICAL TOWNHOUSE "T1" FOR LIGHTING CIRCUITING. REFER PANEL SCHEDULE ON SHEET E-601.00.

LIGHTING DRAWING NOTES:

1. REFER TO DWG. E-001.00 FOR ELECTRICAL GENERAL NOTES, SYMBOL LIST AND ABBREVIATIONS.
2. CIRCUITING FOR LIGHTING FIXTURES IN ROOMS WITH TOGGLE SWITCHES SHALL BE CONTROLLED BY DESIGNATED SWITCHES. IF SPECIFIC DESIGNATION IS NOT INDICATED, ALL LIGHTING FIXTURES IN ROOM/AREA SHALL BE CONTROLLED BY THE SWITCH INDICATED.
3. REFER DWG E-001.00 FOR LIGHT FIXTURE SCHEDULE & LIGHTING CONTROL SCHEDULE.
4. ALL F4-EM/NL FIXTURES IN STAIR-CASE OF MIH BUILDING TO HAVE BUILT IN OCCUPANCY SENSOR TO AUTOMATICALLY TURN ON/OFF LIGHT FIXTURES.

1 GROUND FLOOR LIGHTING PLAN
SCALE: 1/4"=1'-0"

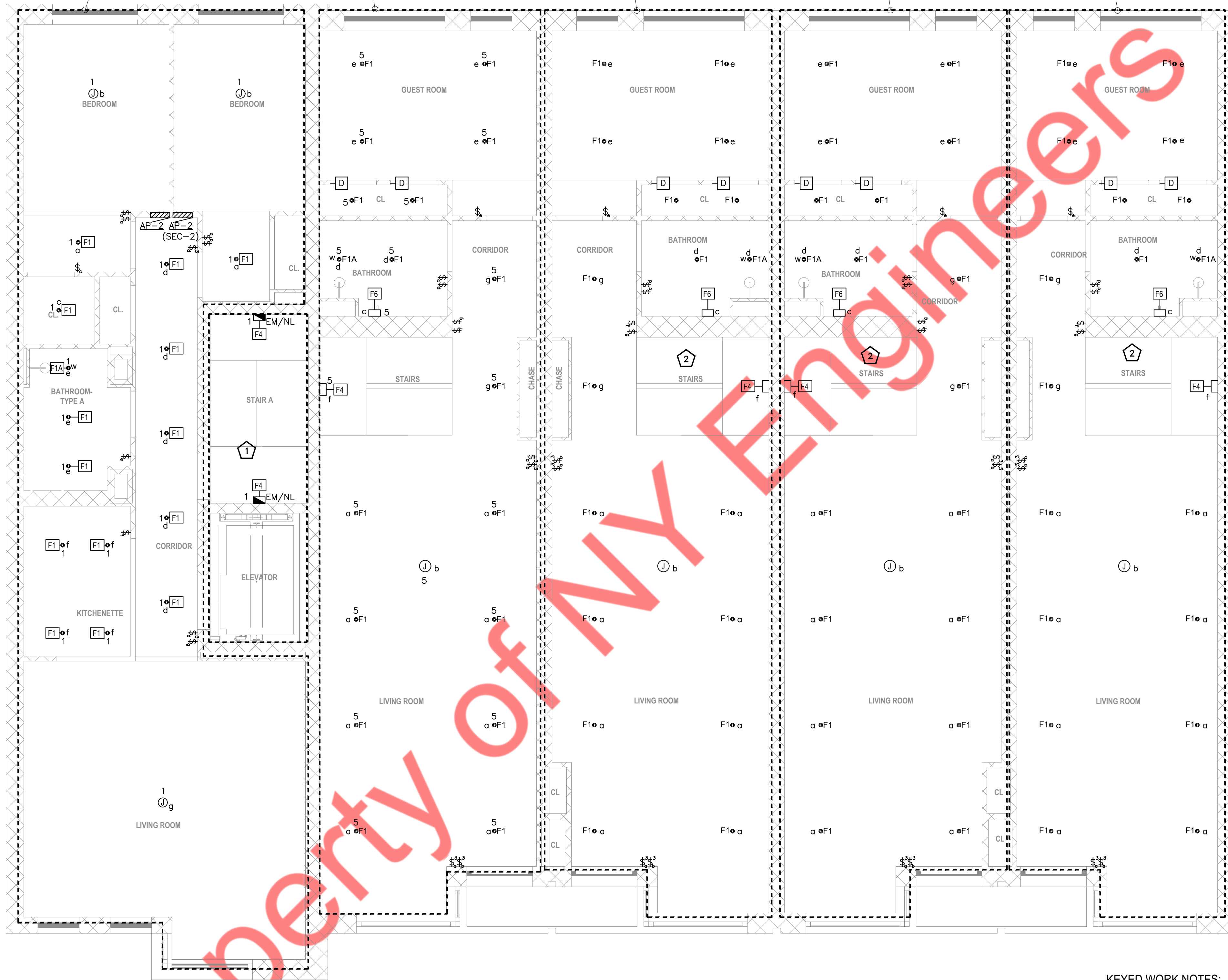
ALL BRANCH CIRCUITS LOCATED IN THIS AREA SHALL BE CIRCUITED TO PANEL "AP-2", CIRCUIT NUMBERS INDICATED, U.O.N.

ALL BRANCH CIRCUITS LOCATED IN THIS AREA SHALL BE CIRCUITED TO PANEL "RP-1A", CIRCUIT NUMBERS INDICATED, U.O.N.

ALL BRANCH CIRCUITS LOCATED IN THIS AREA SHALL BE CIRCUITED TO PANEL "RP-2A", CIRCUIT NUMBERS INDICATED, U.O.N.

ALL BRANCH CIRCUITS LOCATED IN THIS AREA SHALL BE CIRCUITED TO PANEL "RP-3A", CIRCUIT NUMBERS INDICATED, U.O.N.

ALL BRANCH CIRCUITS LOCATED IN THIS AREA SHALL BE CIRCUITED TO PANEL "RP-4A", CIRCUIT NUMBERS INDICATED, U.O.N.



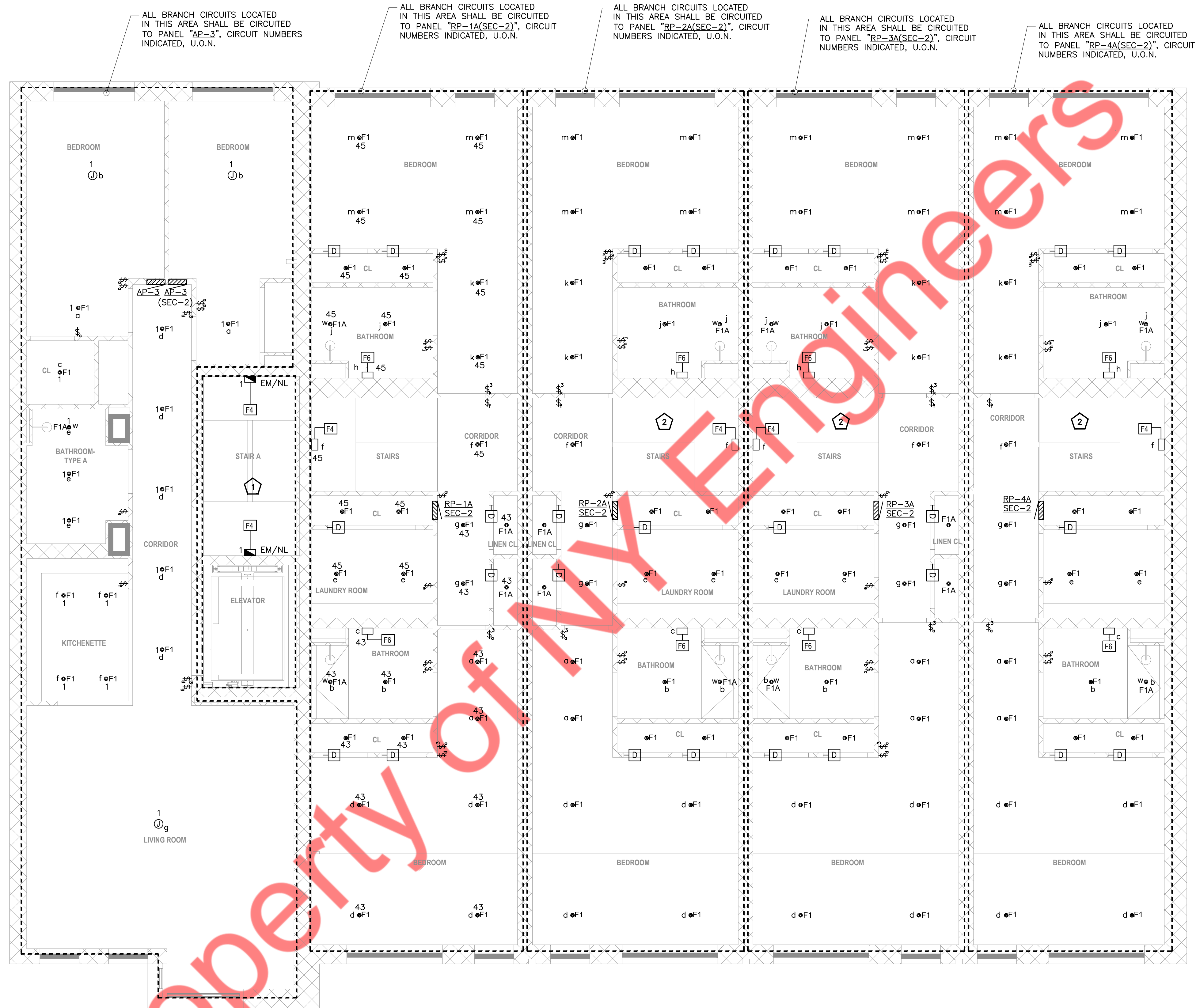
1 2ND FLOOR LIGHTING PLAN
SCALE: 1/4"=1'-0"

KEYED WORK NOTES:

- 1 ALL BRANCH CIRCUITS HOMERUNS ASSIGN INDICATED ON THIS AREA SHALL BE CIRCUITED TO PANEL "HP-1" CIRCUIT NUMBER INDICATED, U.O.N.
- 2 REFER TYPICAL TOWNHOUSE "T1" FOR LIGHTING CIRCUITING. REFER PANEL SCHEDULE ON SHEET E-601.00.

LIGHTING DRAWING NOTES:

- 1. REFER TO DWG. E-001.00 FOR ELECTRICAL GENERAL NOTES, SYMBOL LIST AND ABBREVIATIONS.
- 2. CIRCUITING FOR LIGHTING FIXTURES IN ROOMS WITH TOGGLE SWITCHES SHALL BE CONTROLLED BY DESIGNATED SWITCHES. IF SPECIFIC DESIGNATION IS NOT INDICATED, ALL LIGHTING FIXTURES IN ROOM/AREA SHALL BE CONTROLLED BY THE SWITCH INDICATED.
- 3. REFER DWG. E-001.00 FOR LIGHT FIXTURE SCHEDULE & LIGHTING CONTROL SCHEDULE.
- 4. ALL F4-EM/NL FIXTURES IN STAIR-CASE OF MIH BUILDING TO HAVE BUILT IN OCCUPANCY SENSOR TO AUTOMATICALLY TURN ON/OFF LIGHT FIXTURES.



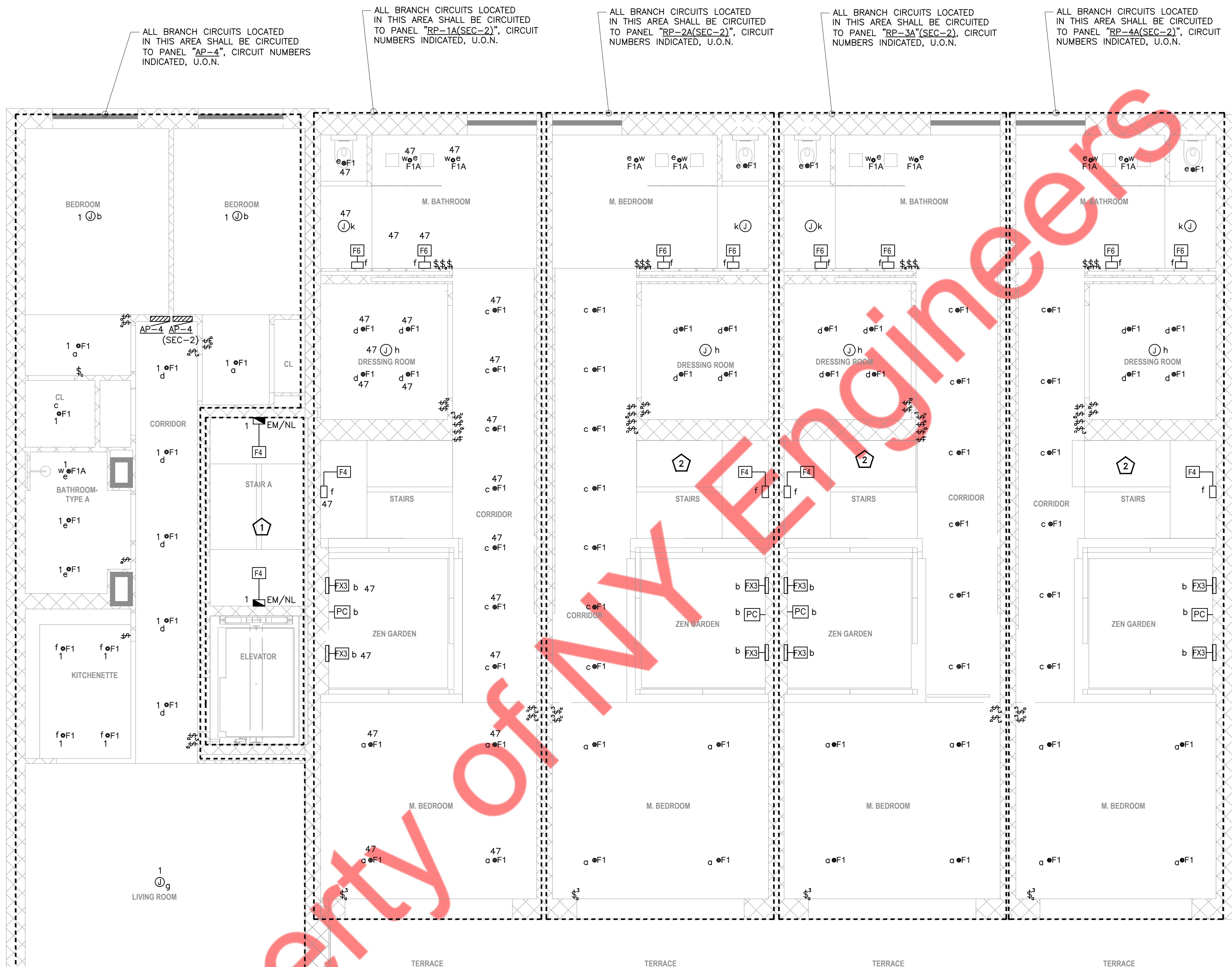
1 3RD FLOOR LIGHTING PLAN
SCALE: 1/4"=1'-0"

KEYED WORK NOTES:

- 1 ALL BRANCH CIRCUITS HOMERUNS ASSIGN INDICATED ON THIS AREA SHALL BE CIRCUITED TO PANEL "HP-1" CIRCUIT NUMBER INDICATED, U.O.N.
- 2 REFER TYPICAL TOWNHOUSE "T1" FOR LIGHTING CIRCUITING. REFER PANEL SCHEDULE ON SHEET E-601.00.

LIGHTING DRAWING NOTES:

- 1. REFER TO DWG. E-001.00 FOR ELECTRICAL GENERAL NOTES, SYMBOL LIST AND ABBREVIATIONS.
- 2. CIRCUITING FOR LIGHTING FIXTURES IN ROOMS WITH TOGGLE SWITCHES SHALL BE CONTROLLED BY DESIGNATED SWITCHES. IF SPECIFIC DESIGNATION IS NOT INDICATED, ALL LIGHTING FIXTURES IN ROOM/AREA SHALL BE CONTROLLED BY THE SWITCH INDICATED.
- 3. REFER DWG E-001.00 FOR LIGHT FIXTURE SCHEDULE & LIGHTING CONTROL SCHEDULE.
- 4. ALL F4-EM/NL FIXTURES IN STAIR-CASE OF MIH BUILDING TO HAVE BUILT IN OCCUPANCY SENSOR TO AUTOMATICALLY TURN ON/OFF LIGHT FIXTURES.



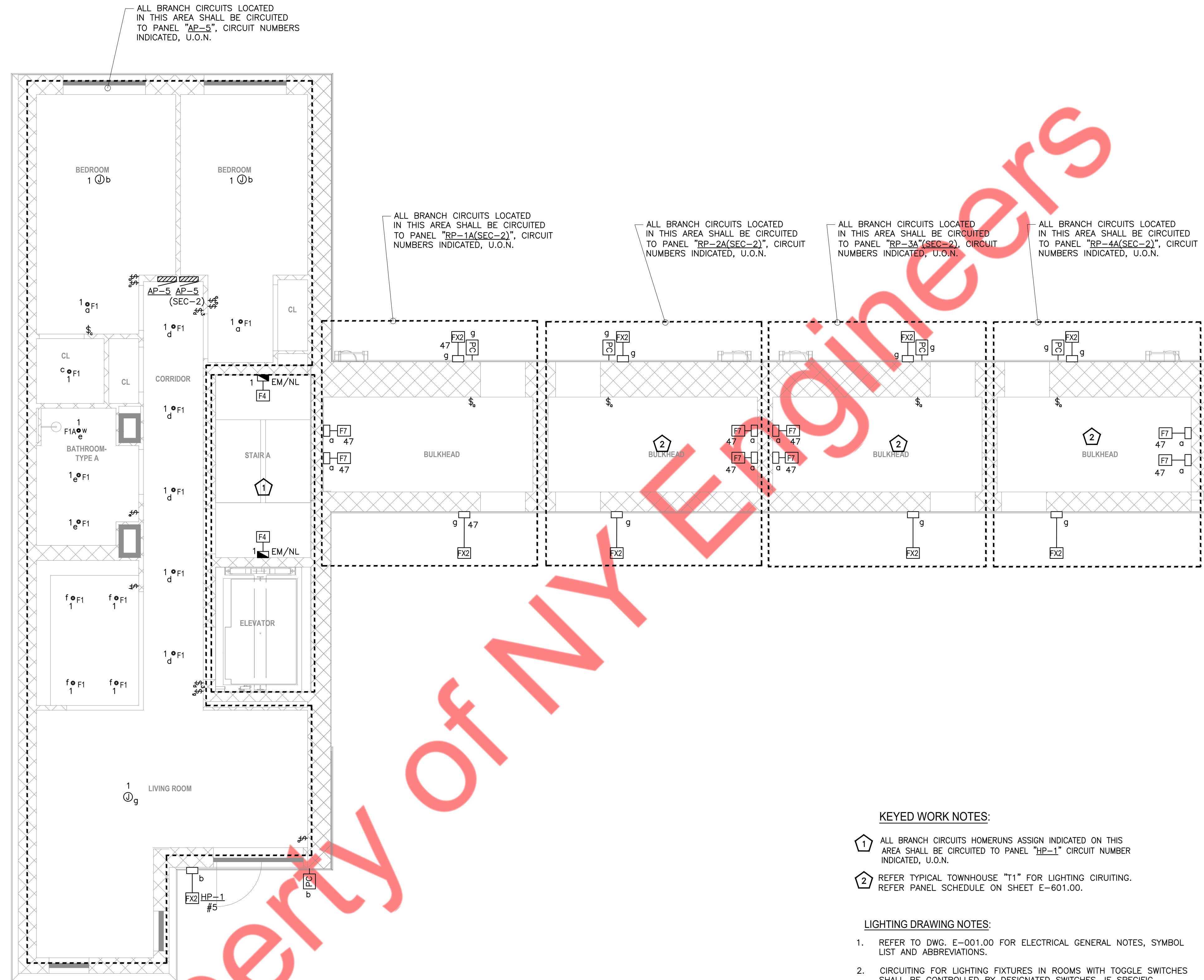
1 4TH FLOOR LIGHTING PLAN
SCALE: 1/4"=1'-0"

KEYED WORK NOTES:

- 1 ALL BRANCH CIRCUITS HOMERUNS ASSIGN INDICATED ON THIS AREA SHALL BE CIRCUITED TO PANEL "HP-1" CIRCUIT NUMBER INDICATED, U.O.N.
- 2 REFER TYPICAL TOWNHOUSE "T1" FOR LIGHTING CIRCUITING. REFER PANEL SCHEDULE ON SHEET E-601.00.

LIGHTING DRAWING NOTES:

- 1. REFER TO DWG. E-001.00 FOR ELECTRICAL GENERAL NOTES, SYMBOL LIST AND ABBREVIATIONS.
- 2. CIRCUITING FOR LIGHTING FIXTURES IN ROOMS WITH TOGGLE SWITCHES SHALL BE CONTROLLED BY DESIGNATED SWITCHES. IF SPECIFIC DESIGNATION IS NOT INDICATED, ALL LIGHTING FIXTURES IN ROOM/AREA SHALL BE CONTROLLED BY THE SWITCH INDICATED.
- 3. REFER DWG E-001.00 FOR LIGHT FIXTURE SCHEDULE & LIGHTING CONTROL SCHEDULE.
- 4. ALL F4-EM/NL FIXTURES IN STAIR-CASE OF MIH BUILDING TO HAVE BUILT IN OCCUPANCY SENSOR TO AUTOMATICALLY TURN ON/OFF LIGHT FIXTURES.



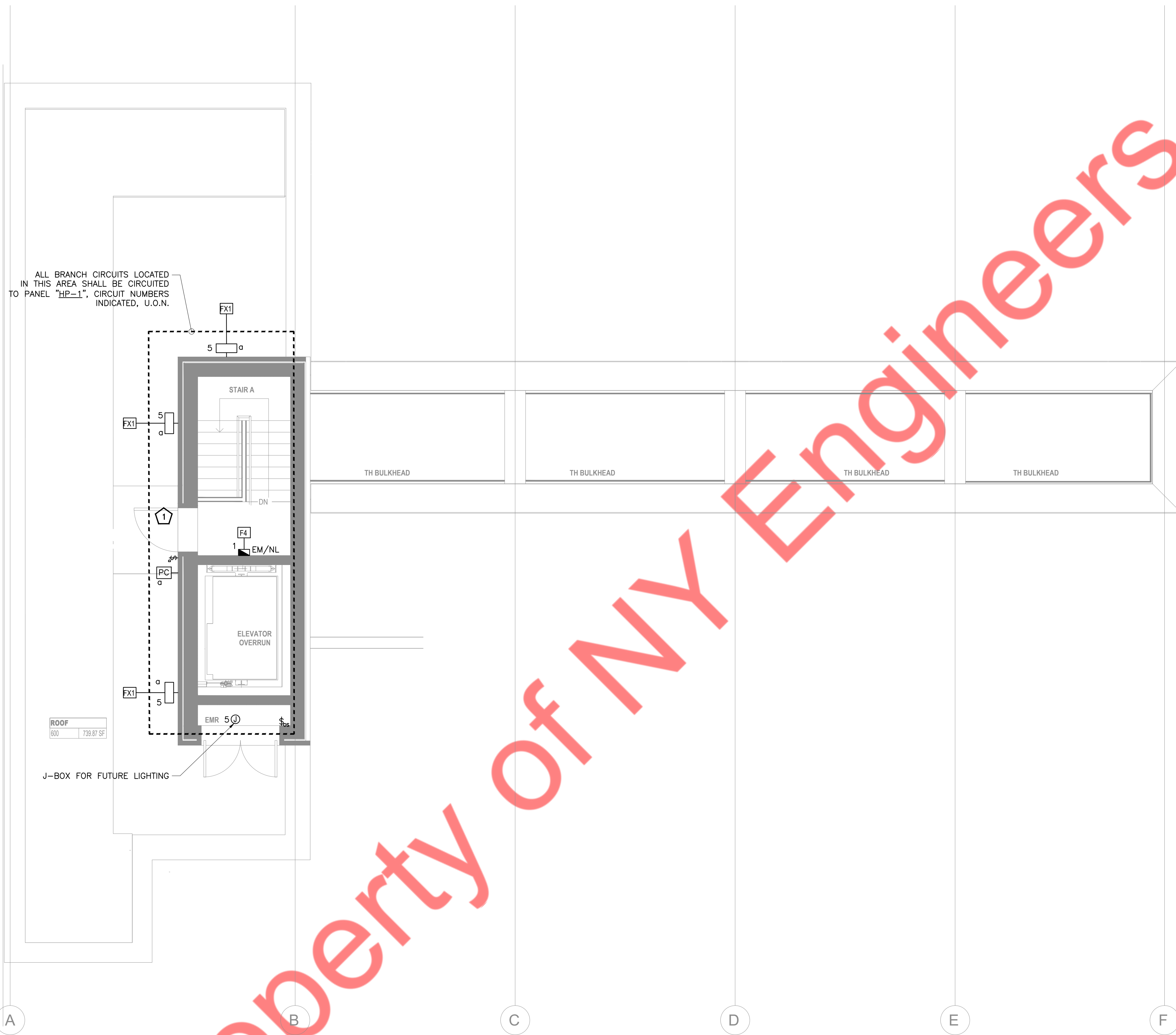
KEYED WORK NOTES:

- ① ALL BRANCH CIRCUITS HOMERUNS ASSIGN INDICATED ON THIS AREA SHALL BE CIRCUITED TO PANEL "HP-1" CIRCUIT NUMBER INDICATED, U.O.N.
- ② REFER TYPICAL TOWNHOUSE "T1" FOR LIGHTING CIRCUITING. REFER PANEL SCHEDULE ON SHEET E-601.00.

LIGHTING DRAWING NOTES:

1. REFER TO DWG. E-001.00 FOR ELECTRICAL GENERAL NOTES, SYMBOL LIST AND ABBREVIATIONS.
2. CIRCUITING FOR LIGHTING FIXTURES IN ROOMS WITH TOGGLE SWITCHES SHALL BE CONTROLLED BY DESIGNATED SWITCHES. IF SPECIFIC DESIGNATION IS NOT INDICATED, ALL LIGHTING FIXTURES IN ROOM/AREA SHALL BE CONTROLLED BY THE SWITCH INDICATED.
3. REFER DWG E-001.00 FOR LIGHT FIXTURE SCHEDULE & LIGHTING CONTROL SCHEDULE.
4. ALL F4-EM/NL FIXTURES IN STAIR-CASE OF MIH BUILDING TO HAVE BUILT IN OCCUPANCY SENSOR TO AUTOMATICALLY TURN ON/OFF LIGHT FIXTURES.

1 5TH FLOOR LIGHTING PLAN
SCALE: 1/4"=1'-0"



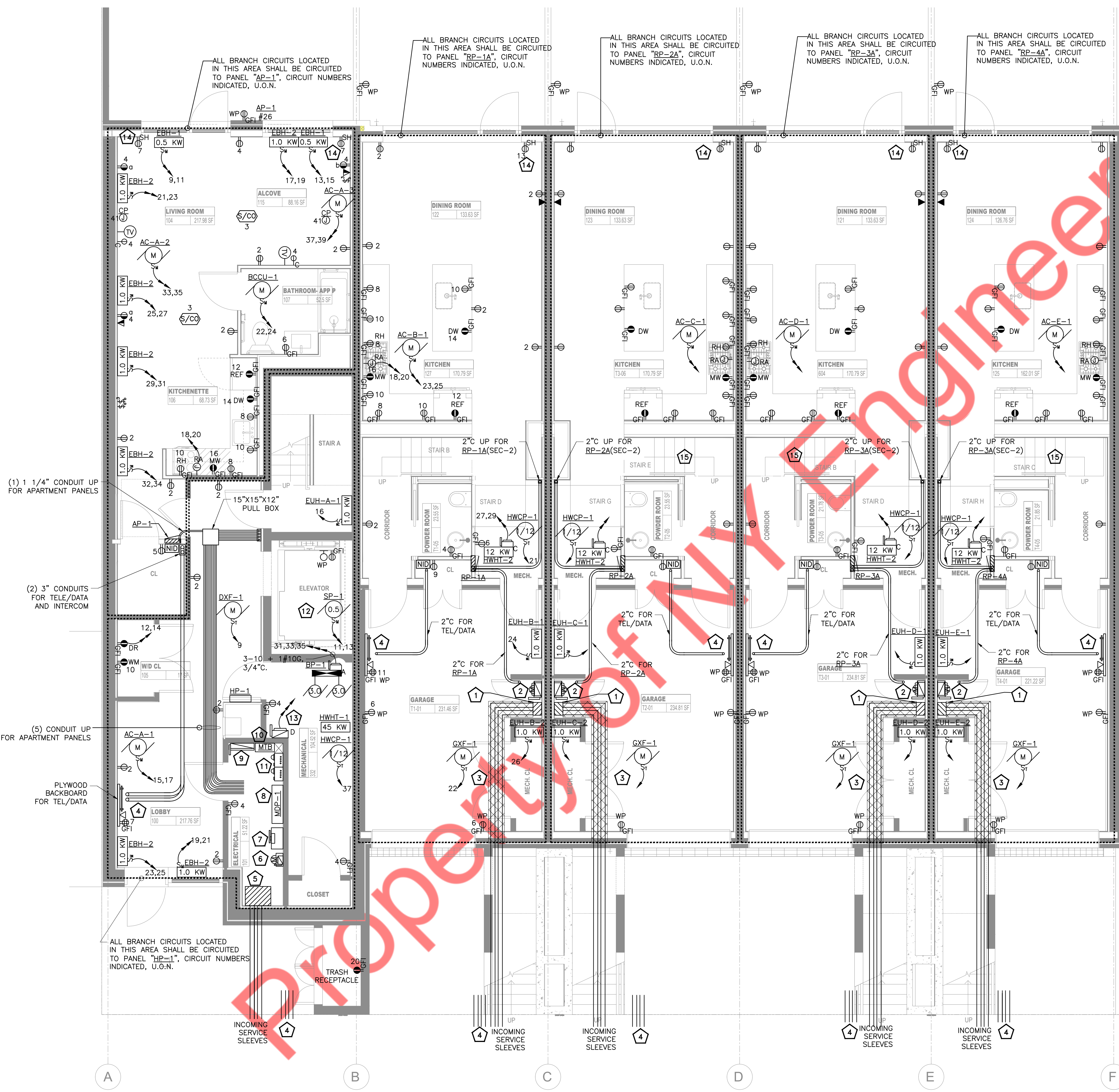
1 ROOF LIGHTING PLAN
SCALE: 1/4"=1'-0"

KEYED WORK NOTES:

- 1 PROVIDE NEMA 3R ENCLOSURE.

LIGHTING DRAWING NOTES:

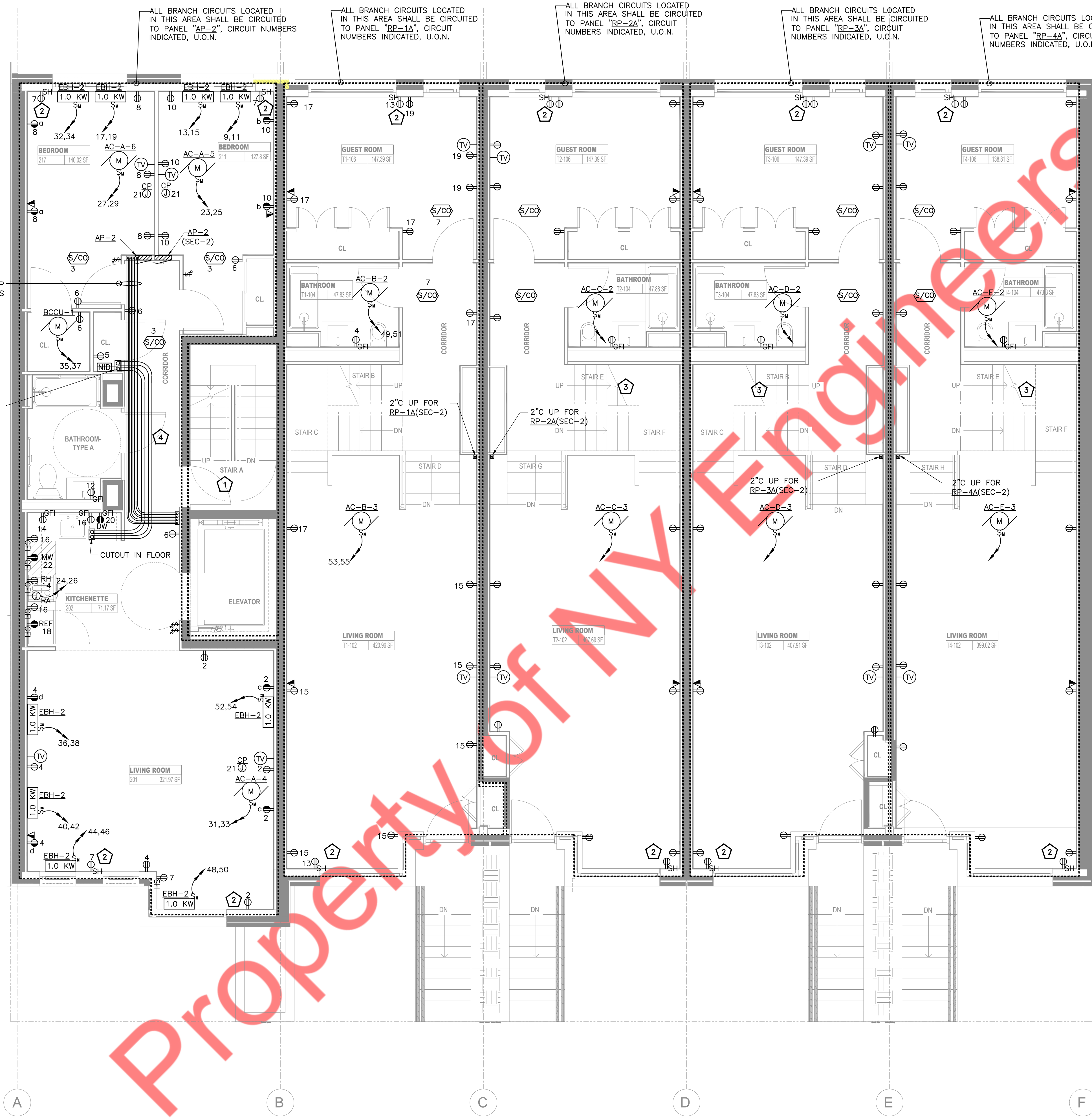
1. REFER TO DWG. E-001.00 FOR ELECTRICAL GENERAL NOTES, SYMBOL LIST AND ABBREVIATIONS.
2. REFER DWG E-001.00 FOR LIGHT FIXTURE SCHEDULE & LIGHTING CONTROL SCHEDULE.
3. ALL F4-EM/NL FIXTURES IN STAIR-CASE OF MIH BUILDING TO HAVE BUILT IN OCCUPANCY SENSOR TO AUTOMATICALLY TURN ON/OFF LIGHT FIXTURES.



- KEYED WORK NOTES:**
- 1 200A SERVICE END BOX CONED SPEC 215 FOR RESIDENTIAL UNIT.
 - 2 200A DISCONNECT SWITCH WITH STACKED METER FOR RESIDENTIAL UNIT.
 - 3 PROVIDE 2" CONCRETE ENCASMENT AS PER NEC-2011 SEC-230.6, 230.70 AND 300.5.
 - 4 ELECTRICAL CONTRACTOR TO RUN (2) 4" CONDUIT UPTO TELECOM EQUIPMENT.
 - 5 800A SERVICE END BOX CONED SPEC EO-9525-B FOR MIH BUILDING.
 - 6 FUSIBLE DISCONNECT SWITCH FOR FACP AND METER ARE STACKED.
 - 7 SS#2 400A TRANS-S SWITCH AND METER COMBINATION FOR MIH BASE BUILDING LOAD.
 - 8 400A MDP-1 FOR MIH BASE BUILDING LOAD.
 - 9 400A SS#1 FOR APARTMENT UNITS.
 - 10 400A MTB FOR APARTMENTS.
 - 11 METER BANK FOR APARTMENTS.
 - 12 SUMP PUMP "SP-1" LOCATED IN ELEVATOR PIT.
 - 13 200A, 208V, 3PH DISCONNECT SWITCH FOR HWHT-1. REFER RISER DIAGRAM ON SHEET E-500.00 FOR FEEDER SIZES.
 - 14 MOTORIZED SHADES RECEPTACLE TO BE MOUNTED HIGH ON WALL AT THE TOP OF THE WINDOW.
 - 15 REFER TYPICAL TOWNHOUSE "T1" FOR POWER CIRCUITING. REFER PANEL SCHEDULE ON SHEET E-601.00.

- DRAWING NOTES:**
- 1. REFER TO DWG. E-001.00 FOR ELECTRICAL GENERAL NOTES, SYMBOL LIST AND ABBREVIATIONS.
 - 2. ALL BRANCH CIRCUITS HOMERUNS ASSIGN INDICATED ON THIS PLAN SHALL BE CIRCUITED TO PANEL AS MENTIONED ON PLANS, CIRCUIT NUMBER INDICATED, U.O.N.
 - 3. ALL BRANCH CIRCUITS LOCATED IN THIS AREA SHALL BE CIRCUITED TO PANEL AS SHOWN, CIRCUIT NUMBERS INDICATED, U.O.N.
 - 4. REFER ARCHITECTURAL DRAWINGS FOR EXACT LOCATION AND MOUNTING HEIGHTS OF OUTLETS.
 - 5. MINIMUM 4" WALL THICKNESS IS REQUIRED TO FLUSH THE PANEL INTO THE WALL.
 - 6. ALL RECEPTACLE IN DWELLING UNIT SHOULD BE TAMPER PROOF AS PER NEC 406.11.
 - 7. PROVIDE WEATHER PROOF ENCLOSURE FOR ALL OUTDOOR RECEPTABLES.
 - 8. EATON DEVICES TO BE USED WITH SCREWLESS PLATES.

1 GROUND FLOOR POWER PLAN
SCALE: 1/4" = 1'-0"



(4) 1 1/2" CONDUIT UP FOR APARTMENT PANELS

(2) 3" CONDUITS FOR TELE/DATA AND INTERCOM

ALL BRANCH CIRCUITS LOCATED IN THIS AREA SHALL BE CIRCUITED TO PANEL "AP-2", CIRCUIT NUMBERS INDICATED, U.O.N.

ALL BRANCH CIRCUITS LOCATED IN THIS AREA SHALL BE CIRCUITED TO PANEL "RP-1A", CIRCUIT NUMBERS INDICATED, U.O.N.

ALL BRANCH CIRCUITS LOCATED IN THIS AREA SHALL BE CIRCUITED TO PANEL "RP-2A", CIRCUIT NUMBERS INDICATED, U.O.N.

ALL BRANCH CIRCUITS LOCATED IN THIS AREA SHALL BE CIRCUITED TO PANEL "RP-3A", CIRCUIT NUMBERS INDICATED, U.O.N.

ALL BRANCH CIRCUITS LOCATED IN THIS AREA SHALL BE CIRCUITED TO PANEL "RP-4A", CIRCUIT NUMBERS INDICATED, U.O.N.

KEYED WORK NOTES:

- 1 ALL BRANCH CIRCUITS HOMERUNS ASSIGN INDICATED ON THIS AREA SHALL BE CIRCUITED TO PANEL "HP-1" CIRCUIT NUMBER INDICATED, U.O.N.
- 2 MOTORIZED SHADES RECEPTACLE TO BE MOUNTED HIGH ON WALL AT THE TOP OF THE WINDOW.
- 3 REFER TYPICAL TOWNHOUSE "T1" FOR POWER CIRCUITING. REFER PANEL SCHEDULE ON SHEET E-601.00.
- 4 EC TO RUN TELECOM CONDUIT IN FLOOR.

POWER DRAWING NOTES:

- 1. REFER DWG. E-001.00 FOR ELECTRICAL GENERAL NOTES, SYMBOL LIST AND ABBREVIATIONS.
- 2. ALL BRANCH CIRCUITS HOMERUNS ASSIGN INDICATED ON THIS PLAN SHALL BE CIRCUITED TO PANEL AS MENTIONED ON PLANS, CIRCUIT NUMBER INDICATED, U.O.N.
- 3. ALL BRANCH CIRCUITS LOCATED IN THIS AREA SHALL BE CIRCUITED TO PANEL AS SHOWN, CIRCUIT NUMBERS INDICATED, U.O.N.
- 4. REFER ARCHITECTURAL DRAWINGS FOR EXACT LOCATION AND MOUNTING HEIGHTS OF OUTLETS.
- 5. MINIMUM 4" WALL THICKNESS IS REQUIRED TO FLUSH THE PANEL INTO THE WALL.
- 6. ALL RECEPTACLE IN DWELLING UNIT SHOULD BE TAMPER PROOF AS PER NEC 406.11.

1 2ND FLOOR POWER PLAN
SCALE: 1/4"=1'-0"

(3) 1 1/2" CONDUIT UP FOR APARTMENT PANELS

(2) 3" CONDUITS FOR TELE/DATA AND INTERCOM

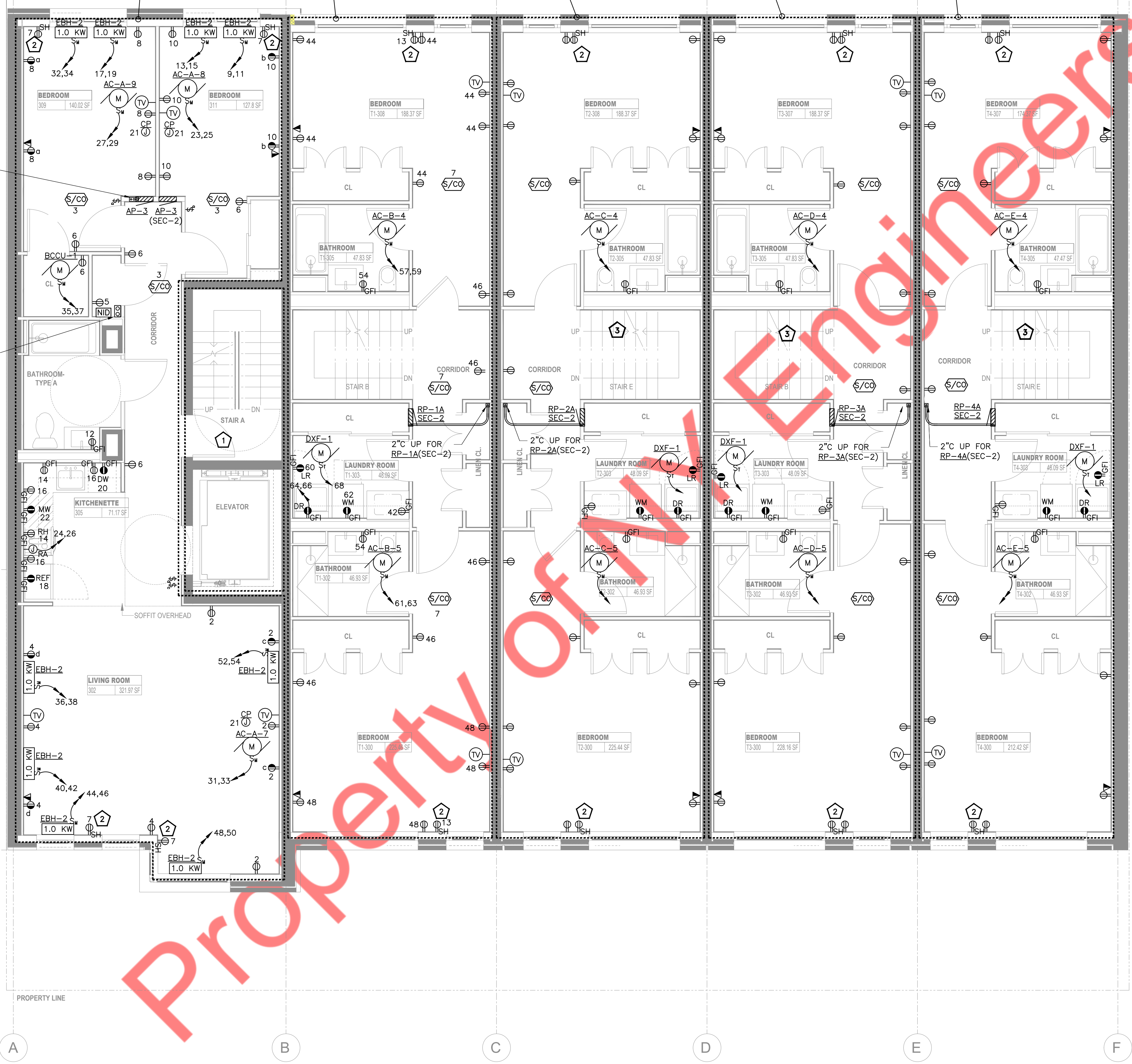
ALL BRANCH CIRCUITS LOCATED IN THIS AREA SHALL BE CIRCUITED TO PANEL "AP-3", CIRCUIT NUMBERS INDICATED, U.O.N.

ALL BRANCH CIRCUITS LOCATED IN THIS AREA SHALL BE CIRCUITED TO PANEL "RP-1A(SEC-2)", CIRCUIT NUMBERS INDICATED, U.O.N.

ALL BRANCH CIRCUITS LOCATED IN THIS AREA SHALL BE CIRCUITED TO PANEL "RP-2A(SEC-2)", CIRCUIT NUMBERS INDICATED, U.O.N.

ALL BRANCH CIRCUITS LOCATED IN THIS AREA SHALL BE CIRCUITED TO PANEL "RP-3A(SEC-2)", CIRCUIT NUMBERS INDICATED, U.O.N.

ALL BRANCH CIRCUITS LOCATED IN THIS AREA SHALL BE CIRCUITED TO PANEL "RP-4A(SEC-2)", CIRCUIT NUMBERS INDICATED, U.O.N.



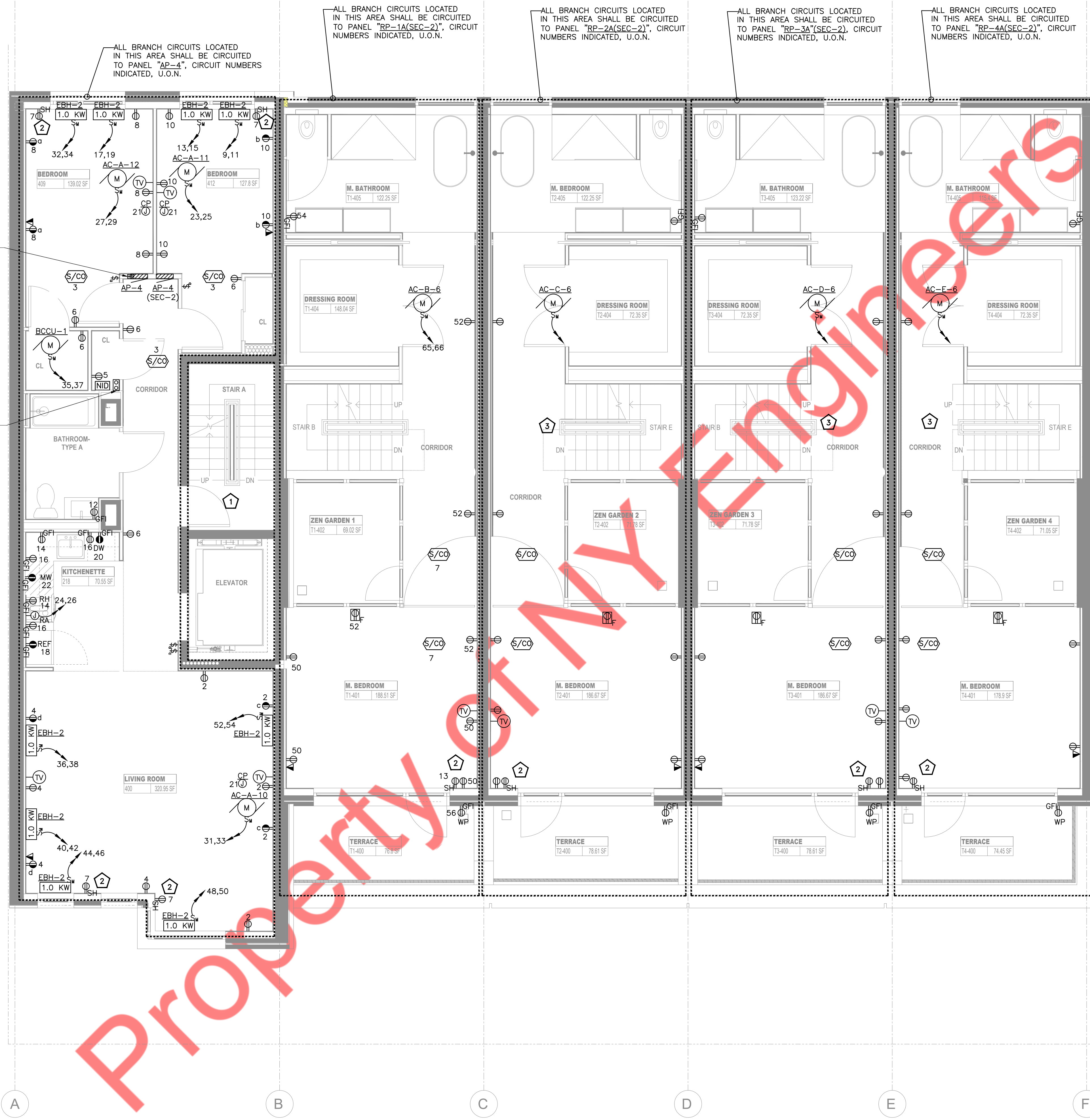
KEYED WORK NOTES:

- 1 ALL BRANCH CIRCUITS HOMERUNS ASSIGN INDICATED ON THIS AREA SHALL BE CIRCUITED TO PANEL "HP-1" CIRCUIT NUMBER INDICATED, U.O.N.
- 2 MOTORIZED SHADES RECEPTACLE TO BE MOUNTED HIGH ON WALL AT THE TOP OF THE WINDOW.
- 3 REFER TYPICAL TOWNHOUSE "T1" FOR POWER CIRCUITING. REFER PANEL SCHEDULE ON SHEET E-601.00.

POWER DRAWING NOTES:

- 1. REFER DWG. E-001.00 FOR ELECTRICAL GENERAL NOTES, SYMBOL LIST AND ABBREVIATIONS.
- 2. ALL BRANCH CIRCUITS HOMERUNS ASSIGN INDICATED ON THIS PLAN SHALL BE CIRCUITED TO PANEL AS MENTIONED ON PLANS, CIRCUIT NUMBER INDICATED, U.O.N.
- 3. ALL BRANCH CIRCUITS LOCATED IN THIS AREA SHALL BE CIRCUITED TO PANEL AS SHOWN, CIRCUIT NUMBERS INDICATED, U.O.N.
- 4. REFER ARCHITECTURAL DRAWINGS FOR EXACT LOCATION AND MOUNTING HEIGHTS OF OUTLETS.
- 5. MINIMUM 4" WALL THICKNESS IS REQUIRED TO FLUSH THE PANEL INTO THE WALL.
- 6. ALL RECEPTACLE IN DWELLING UNIT SHOULD BE TAMPER PROOF AS PER NEC 406.11.

1 3RD FLOOR POWER PLAN
SCALE: 1/4"=1'-0"



ALL BRANCH CIRCUITS LOCATED IN THIS AREA SHALL BE CIRCUITED TO PANEL "AP-4", CIRCUIT NUMBERS INDICATED, U.O.N.

ALL BRANCH CIRCUITS LOCATED IN THIS AREA SHALL BE CIRCUITED TO PANEL "RP-1A(SEC-2)", CIRCUIT NUMBERS INDICATED, U.O.N.

ALL BRANCH CIRCUITS LOCATED IN THIS AREA SHALL BE CIRCUITED TO PANEL "RP-2A(SEC-2)", CIRCUIT NUMBERS INDICATED, U.O.N.

ALL BRANCH CIRCUITS LOCATED IN THIS AREA SHALL BE CIRCUITED TO PANEL "RP-3A(SEC-2)", CIRCUIT NUMBERS INDICATED, U.O.N.

ALL BRANCH CIRCUITS LOCATED IN THIS AREA SHALL BE CIRCUITED TO PANEL "RP-4A(SEC-2)", CIRCUIT NUMBERS INDICATED, U.O.N.

(2) 1 1/2" CONDUIT UP FOR APARTMENT PANELS

(2) 3" CONDUITS FOR TELE/DATA AND INTERCOM

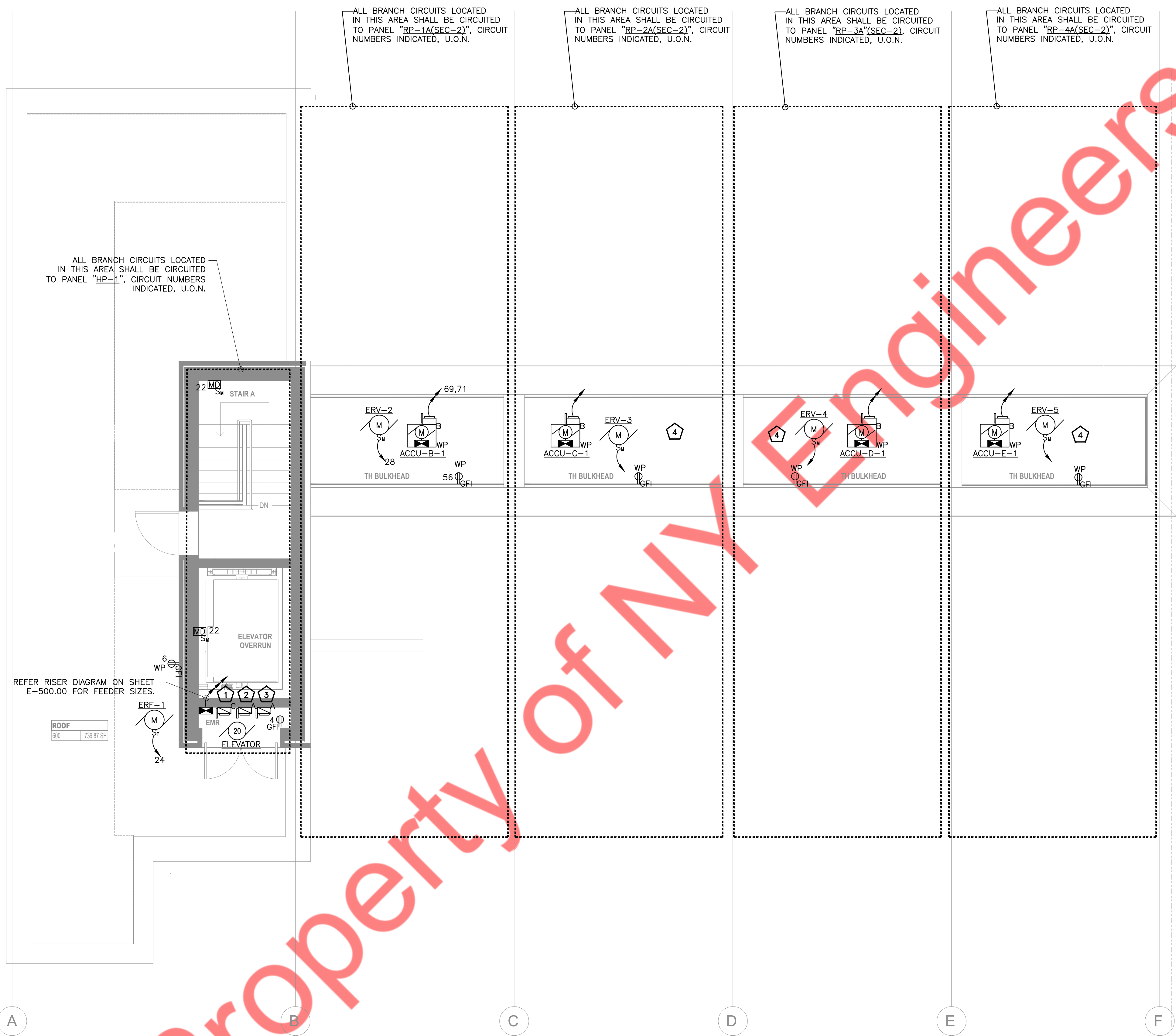
- KEYED WORK NOTES:**
- 1 ALL BRANCH CIRCUITS HOMERUNS ASSIGN INDICATED ON THIS AREA SHALL BE CIRCUITED TO PANEL "HP-1" CIRCUIT NUMBER INDICATED, U.O.N.
 - 2 MOTORIZED SHADES RECEPTACLE TO BE MOUNTED HIGH ON WALL AT THE TOP OF THE WINDOW.
 - 3 REFER TYPICAL TOWNHOUSE "T1" FOR POWER CIRCUITING. REFER PANEL SCHEDULE ON SHEET E-601.00.

- POWER DRAWING NOTES:**
1. REFER DWG. E-001.00 FOR ELECTRICAL GENERAL NOTES, SYMBOL LIST AND ABBREVIATIONS.
 2. ALL BRANCH CIRCUITS HOMERUNS ASSIGN INDICATED ON THIS PLAN SHALL BE CIRCUITED TO PANEL AS MENTIONED ON PLANS, CIRCUIT NUMBER INDICATED, U.O.N.
 3. ALL BRANCH CIRCUITS LOCATED IN THIS AREA SHALL BE CIRCUITED TO PANEL AS SHOWN, CIRCUIT NUMBERS INDICATED, U.O.N.
 4. REFER ARCHITECTURAL DRAWINGS FOR EXACT LOCATION AND MOUNTING HEIGHTS OF OUTLETS.
 5. MINIMUM 4" WALL THICKNESS IS REQUIRED TO FLUSH THE PANEL INTO THE WALL.
 6. ALL RECEPTACLE IN DWELLING UNIT SHOULD BE TAMPER PROOF AS PER NEC 406.11.
 7. PROVIDE WEATHER PROOF ENCLOSURE FOR ALL OUTDOOR RECEPTACLES.

1 4TH FLOOR POWER PLAN
SCALE: 1/4"=1'-0"



1 5TH FLOOR POWER PLAN
SCALE: 1/4"=1'-0"



ALL BRANCH CIRCUITS LOCATED IN THIS AREA SHALL BE CIRCUITED TO PANEL "HP-1", CIRCUIT NUMBERS INDICATED, U.O.N.

ALL BRANCH CIRCUITS LOCATED IN THIS AREA SHALL BE CIRCUITED TO PANEL "RP-1A(SEC-2)", CIRCUIT NUMBERS INDICATED, U.O.N.

ALL BRANCH CIRCUITS LOCATED IN THIS AREA SHALL BE CIRCUITED TO PANEL "RP-2A(SEC-2)", CIRCUIT NUMBERS INDICATED, U.O.N.

ALL BRANCH CIRCUITS LOCATED IN THIS AREA SHALL BE CIRCUITED TO PANEL "RP-3A(SEC-2)", CIRCUIT NUMBERS INDICATED, U.O.N.

ALL BRANCH CIRCUITS LOCATED IN THIS AREA SHALL BE CIRCUITED TO PANEL "RP-4A(SEC-2)", CIRCUIT NUMBERS INDICATED, U.O.N.

REFER RISER DIAGRAM ON SHEET E-500.00 FOR FEEDER SIZES.

ROOF	
600	739.87 SF

KEYED WORK NOTES:

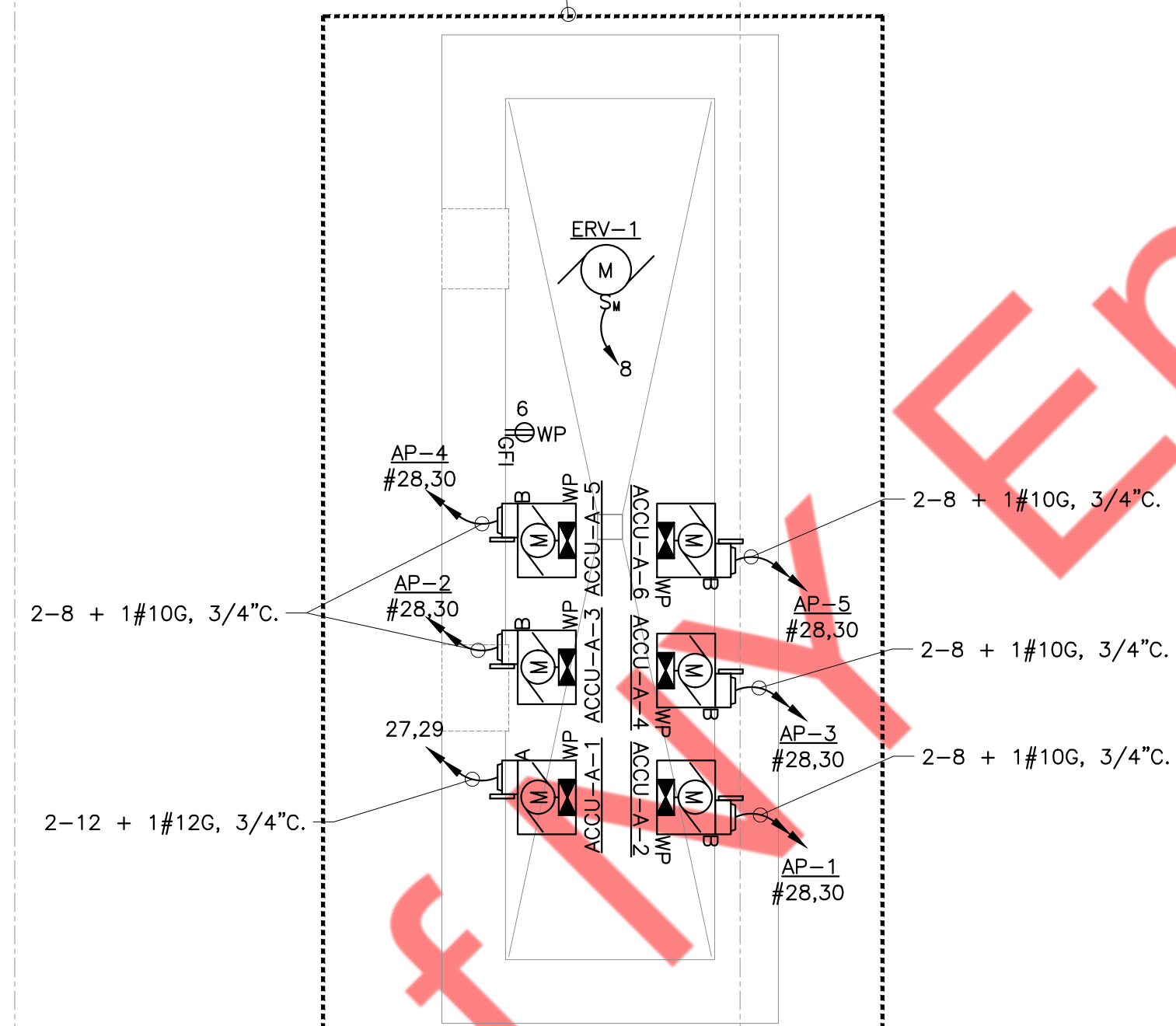
- 1 100AS/80AF/208V DISCONNECT SWITCH FOR ELEVATOR CONTROLLER.
- 2 30AS/20AF/115V DISC. SWITCH FOR ELEVATOR CAB AUX. POWER.
- 3 30AS/20AF/115V DISC. SWITCH FOR ELEVATOR CAB LIGHTING.
- 4 REFER TYPICAL TOWNHOUSE "T1" FOR LIGHTING CIRCUITING. REFER PANEL SCHEDULE ON SHEET E-601.00.

POWER DRAWING NOTES:

- 1. REFER DWG. E-001.00 FOR ELECTRICAL GENERAL NOTES, SYMBOL LIST AND ABBREVIATIONS.
- 2. ALL BRANCH CIRCUITS HOMERUNS ASSIGN INDICATED ON THIS PLAN SHALL BE CIRCUITED TO PANEL AS MENTIONED ON PLANS, CIRCUIT NUMBER INDICATED, U.O.N.
- 3. ALL BRANCH CIRCUITS LOCATED IN THIS AREA SHALL BE CIRCUITED TO PANEL AS SHOWN, CIRCUIT NUMBERS INDICATED, U.O.N.
- 4. REFER ARCHITECTURAL DRAWINGS FOR EXACT LOCATION AND MOUNTING HEIGHTS OF OUTLETS.
- 5. PROVIDE WEATHER PROOF ENCLOSURE FOR ALL OUTDOOR RECEPTACLES.

1 ROOF POWER PLAN
SCALE: 1/4"=1'-0"

ALL BRANCH CIRCUITS LOCATED
IN THIS AREA SHALL BE CIRCUITED
TO PANEL "HP-1", CIRCUIT NUMBERS
INDICATED, U.O.N.



POWER DRAWING NOTES:

1. REFER DWG. E-001.00 FOR ELECTRICAL GENERAL NOTES, SYMBOL LIST AND ABBREVIATIONS.
2. ALL BRANCH CIRCUITS HOMERUNS ASSIGN INDICATED ON THIS PLAN SHALL BE CIRCUITED TO PANEL AS MENTIONED ON PLANS, CIRCUIT NUMBER INDICATED, U.O.N.
3. ALL BRANCH CIRCUITS LOCATED IN THIS AREA SHALL BE CIRCUITED TO PANEL AS SHOWN, CIRCUIT NUMBERS INDICATED, U.O.N.
4. REFER ARCHITECTURAL DRAWINGS FOR EXACT LOCATION AND MOUNTING HEIGHTS OF OUTLETS.
5. PROVIDE WEATHER PROOF ENCLOSURE FOR ALL OUTDOOR RECEPTACLES.