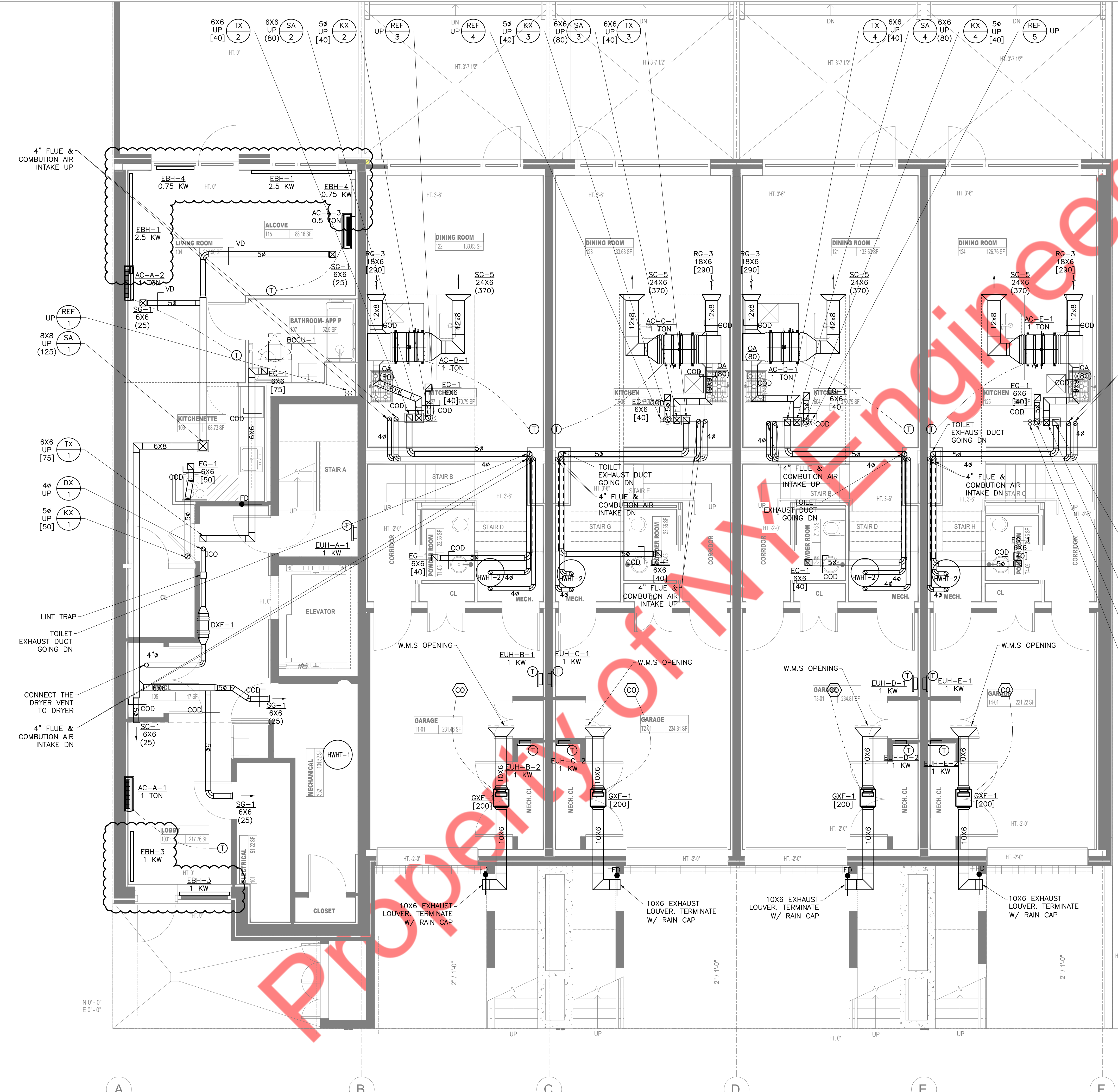
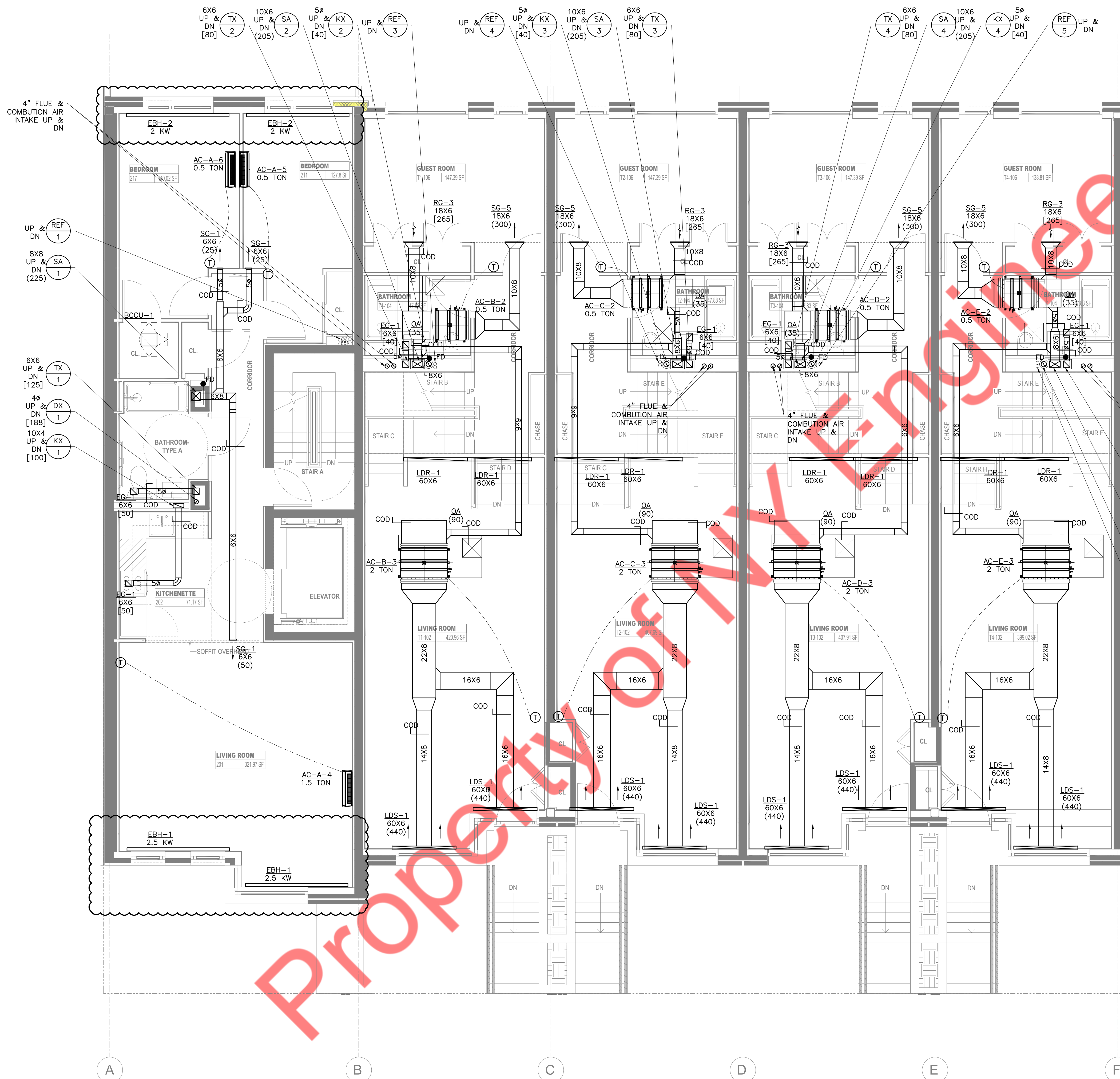


- NOTES:**
1. OUTDOOR AIR INTAKE, EXHAUST OPENINGS, STAIRWAY AND SHAFT VENTS SHALL BE PROVIDED WITH CLASS I MOTORIZED DAMPERS. THE DAMPERS SHALL HAVE AN AIR LEAKAGE RATE NOT GREATER THAN 4 CFM/FT<sup>2</sup> OF DAMPER SURFACE AREA AT 1.0 INCH WATER GAUGE AND SHALL BE LABELED BY AN APPROVED AGENCY WHEN TESTED IN ACCORDANCE WITH AMCA 500D.
  2. ALL THE CONDENSATE DRAIN PUMP TO BE MOUNTED INSIDE THE CASING OF WALL MOUNTED UNITS.
  3. PROVIDE 1.5" INSULATION FOR RETURN AND OUTSIDE AIR DUCT WORK.
  4. PROVIDE 1.5" ACOUSTIC LINING FOR ENTIRE SUPPLY AIR DUCT WORK.
  5. COORDINATE FINAL CFM FOR DRYER EXHAUST WITH LATEST DRYER MACHINE SELECTION.
  6. PROVIDE 1.5" FIRE WRAP (MODEL NO: 615 + HILT) AROUND DRYER EXHAUST DUCTWORK.
  7. ALL MECHANICAL PLANS ARE SHOWN AS TO COMPLY WITH NEW YORK CITY MECHANICAL CODE 2014.



**1 GROUND FLOOR MECHANICAL PLAN**  
SCALE: 1/4" = 1'-0"



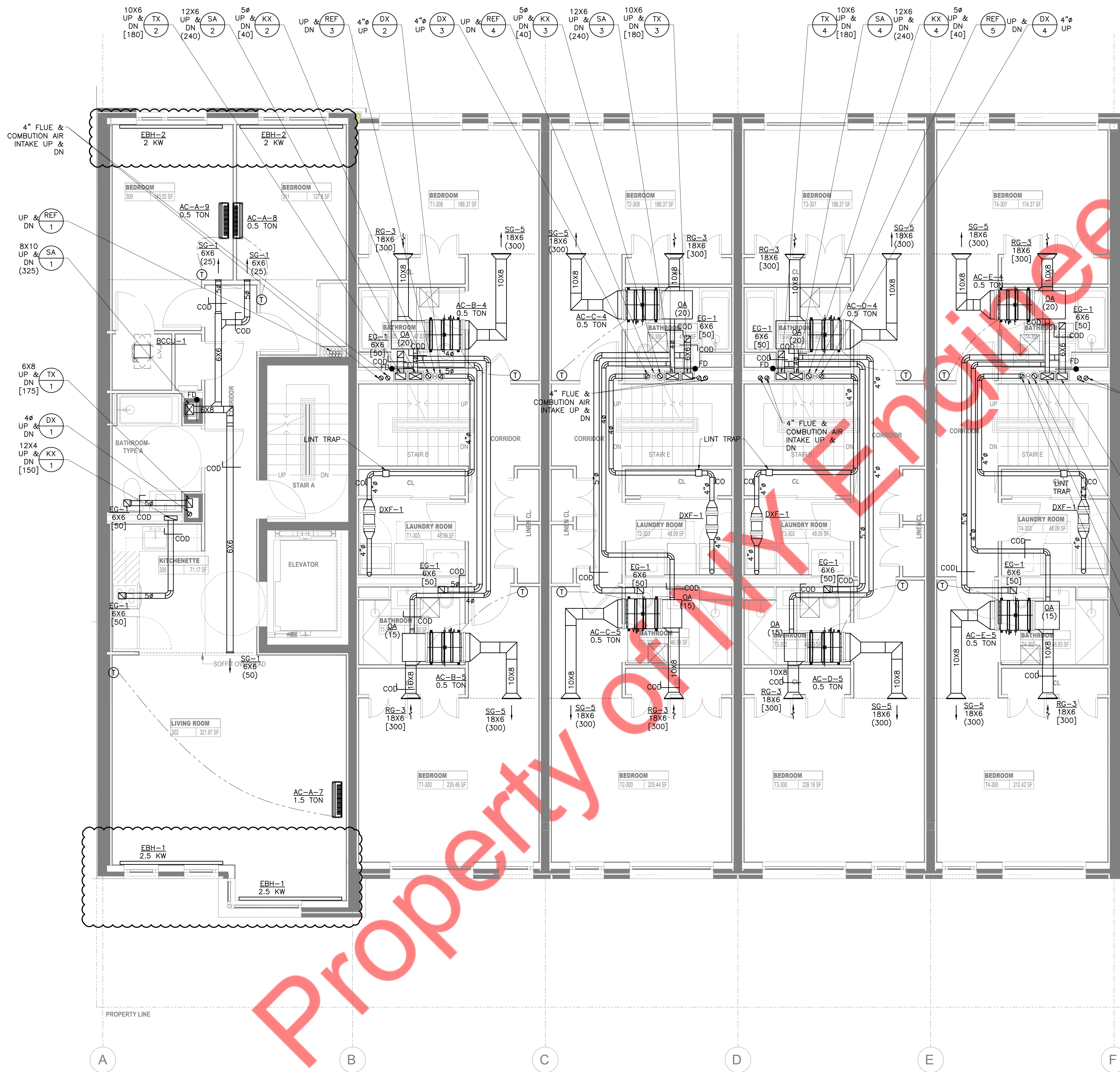


- NOTES:**
1. OUTDOOR AIR INTAKE, EXHAUST OPENINGS, STAIRWAY AND SHAFT VENTS SHALL BE PROVIDED WITH CLASS I MOTORIZED DAMPERS. THE DAMPERS SHALL HAVE AN AIR LEAKAGE RATE NOT GREATER THAN 4 CFM/FT<sup>2</sup> OF DAMPER SURFACE AREA AT 1.0 INCH WATER GAUGE AND SHALL BE LABELED BY AN APPROVED AGENCY WHEN TESTED IN ACCORDANCE WITH AMCA 500D.
  2. ALL THE CONDENSATE DRAIN PUMP TO BE MOUNTED INSIDE THE CASING OF WALL MOUNTED UNITS.
  3. PROVIDE 1.5" INSULATION FOR RETURN AND OUTSIDE AIR DUCT WORK.
  4. PROVIDE 1.5" ACOUSTIC LINING FOR ENTIRE SUPPLY AIR DUCT WORK.
  5. PROVIDE 1.5" FIRE WRAP (MODEL NO: 615 + HILT) AROUND DRYER EXHAUST DUCTWORK.
  6. ALL MECHANICAL PLANS ARE SHOWN AS TO COMPLY WITH NEW YORK CITY MECHANICAL CODE 2014.

- 6X6 UP & DN [125] TX 1
- 8X8 UP & DN [225] SA 1
- 6X6 UP & DN [188] DX 1
- 10X4 UP & DN [100] KX 1
- 6X6 UP & DN [80] TX 5
- 10X6 UP & DN [205] SA 5
- 5ø UP & DN [40] KX 5
- REF UP & DN 6

**1 2ND FLOOR MECHANICAL PLAN**  
SCALE: 1/4"=1'-0"



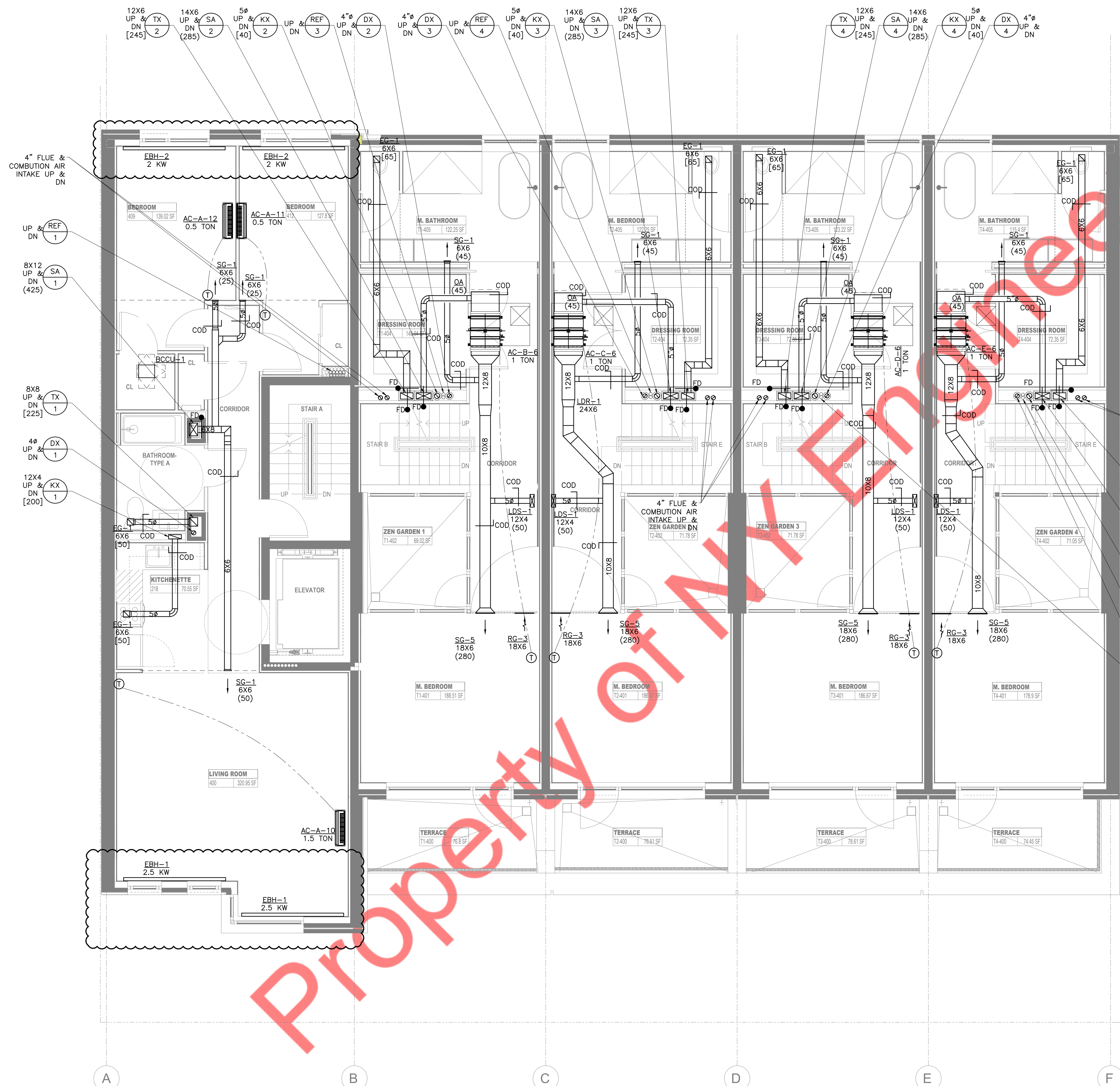


- KEY NOTES:**
- 1. 3/4" DOOR UNDERCUT.
- NOTES:**
1. OUTDOOR AIR INTAKE, EXHAUST OPENINGS, STAIRWAY AND SHAFT VENTS SHALL BE PROVIDED WITH CLASS 1 MOTORIZED DAMPERS. THE DAMPERS SHALL HAVE AN AIR LEAKAGE RATE NOT GREATER THAN 4 CFM/FT<sup>2</sup> OF DAMPER SURFACE AREA AT 1.0 INCH WATER GAUGE AND SHALL BE LABELED BY AN APPROVED AGENCY WHEN TESTED IN ACCORDANCE WITH AMCA 500D.
  2. ALL THE CONDENSATE DRAIN PUMP TO BE MOUNTED INSIDE THE CASING OF WALL MOUNTED UNITS.
  3. PROVIDE 1.5" INSULATION FOR RETURN AND OUTSIDE AIR DUCT WORK.
  4. PROVIDE 1.5" ACOUSTIC LINING FOR ENTIRE SUPPLY AIR DUCT WORK.
  5. COORDINATE FINAL CFM FOR DRYER EXHAUST WITH LATEST DRYER MACHINE SELECTION.
  6. PROVIDE 1.5" FIRE WRAP (MODEL NO: 615 + HILT) AROUND DRYER EXHAUST DUCTWORK.
  7. ALL MECHANICAL PLANS ARE SHOWN AS TO COMPLY WITH NEW YORK CITY MECHANICAL CODE 2014.

- TX 5  
10X6 UP & DN [180]
- SA 5  
12X6 UP & DN [240]
- KX 5  
5" UP & DN [40]
- REF 6  
UP & DN
- DX 5  
4" UP

**1 3RD FLOOR MECHANICAL PLAN**  
SCALE: 1/4"=1'-0"



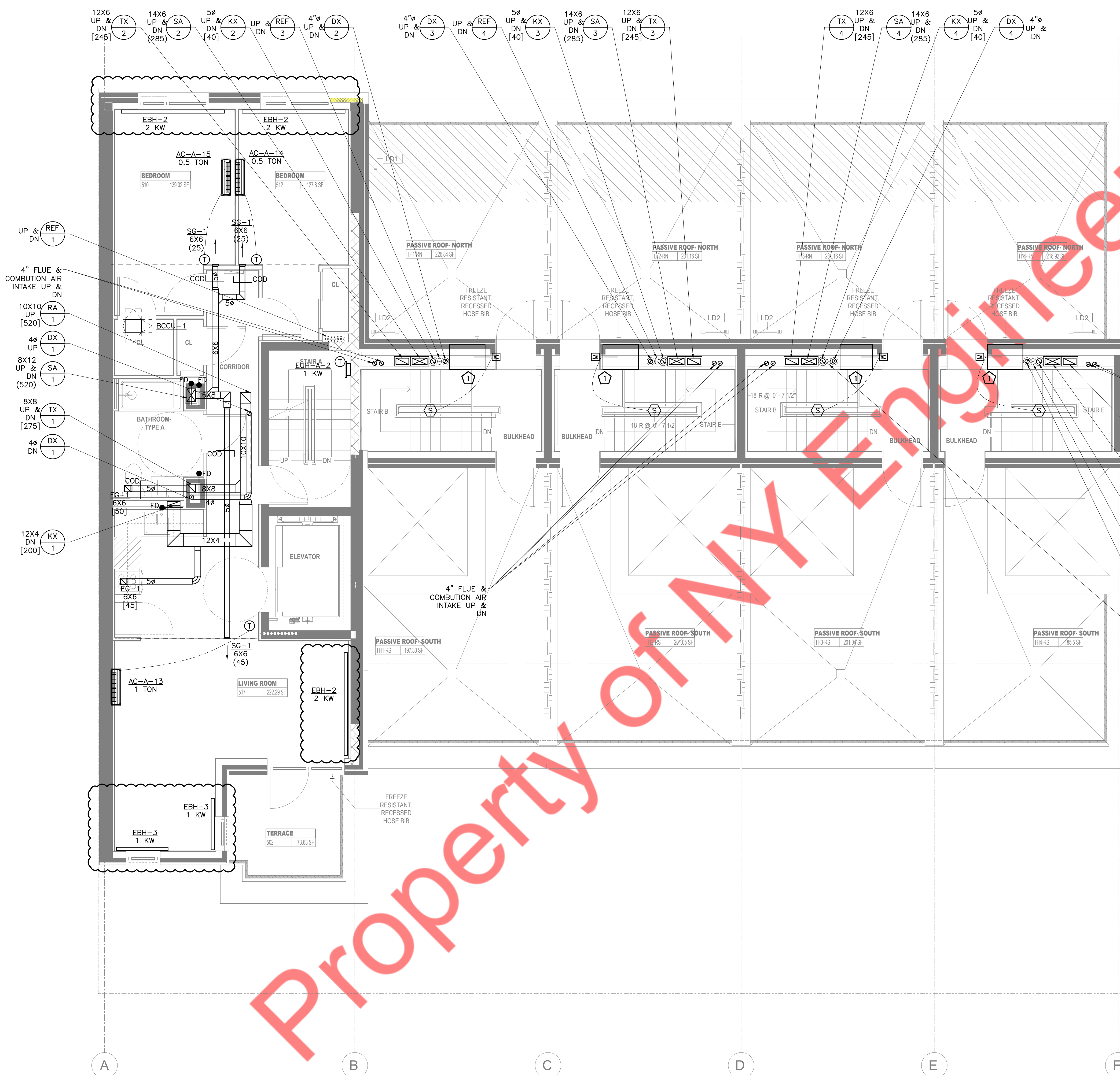


- NOTES:**
1. OUTDOOR AIR INTAKE, EXHAUST OPENINGS, STAIRWAY AND SHAFT VENTS SHALL BE PROVIDED WITH CLASS 1 MOTORIZED DAMPERS. THE DAMPERS SHALL HAVE AN AIR LEAKAGE RATE NOT GREATER THAN 4 CFM/FT<sup>2</sup> OF DAMPER SURFACE AREA AT 1.0 INCH WATER GAUGE AND SHALL BE LABELED BY AN APPROVED AGENCY WHEN TESTED IN ACCORDANCE WITH AMCA 500D.
  2. ALL THE CONDENSATE DRAIN PUMP TO BE MOUNTED INSIDE THE CASING OF WALL MOUNTED UNITS.
  3. PROVIDE 1.5" INSULATION FOR RETURN AND OUTSIDE AIR DUCT WORK.
  4. PROVIDE 1.5" ACOUSTIC LINING FOR ENTIRE SUPPLY AIR DUCT WORK.
  5. PROVIDE 1.5" FIRE WRAP (MODEL NO: 615 + HILTI) AROUND DRYER EXHAUST DUCTWORK.
  6. ALL MECHANICAL PLANS ARE SHOWN AS TO COMPLY WITH NEW YORK CITY MECHANICAL CODE 2014.

- 4" FLUE & COMBUSTION AIR INTAKE UP & DN
- TX 12X6 UP & DN [245]
  - SA 14X6 UP & DN (285)
  - KX 5" UP & DN [40]
  - REF UP & DN [6]
  - DX 4" UP & DN [5]
  - REF UP & DN [5]

**1 4TH FLOOR MECHANICAL PLAN**  
SCALE: 1/4"=1'-0"





- NOTES:**
1. OUTDOOR AIR INTAKE, EXHAUST OPENINGS, STAIRWAY AND SHAFT VENTS SHALL BE PROVIDED WITH CLASS I MOTORIZED DAMPERS. THE DAMPERS SHALL HAVE AN AIR LEAKAGE RATE NOT GREATER THAN 4 CFM/FT<sup>2</sup> OF DAMPER SURFACE AREA AT 1.0 INCH WATER GAUGE AND SHALL BE LABELED BY AN APPROVED AGENCY WHEN TESTED IN ACCORDANCE WITH AMCA 5000.
  2. ALL THE CONDENSATE DRAIN PUMP TO BE MOUNTED INSIDE THE CASING OF WALL MOUNTED UNITS.
  3. PROVIDE 1.5" INSULATION FOR RETURN AND OUTSIDE AIR DUCT WORK.
  4. PROVIDE 1.5" FIRE WRAP (MODEL NO: 615 + HILT) AROUND DRYER EXHAUST DUCTWORK.
  5. ALL MECHANICAL PLANS ARE SHOWN AS TO COMPLY WITH NEW YORK CITY MECHANICAL CODE 2014.
- KEY NOTES:-**
1. PROVIDE MIN 3.3 S.F VENT WITH LOUVER/HATCH AT THE TOP OF STAIRCASE ENCLOSURE. PROVIDE MOTORIZED DAMPER AT LOUVER/HATCH & CONNECT TO SMOKE DETECTOR ON TOP OF STAIRCASE ENCLOSURE TO 100% FULLY OPEN WHEN SMOKE DETECTOR IS TRIGGERED. NO OPENING SHALL BE LOCATED IN THE WALL WITHIN A DISTANCE OF 30 FEET VERTICALLY ABOVE VENT OPENING OR 5 FEET ON EITHER SIDE OF THE VENT OPENING.

**1 5TH FLOOR MECHANICAL PLAN**  
SCALE: 1/4"=1'-0"

