

1 CELLAR FIRE ALARM PLAN  
SCALE: 1/8" = 1'-0"

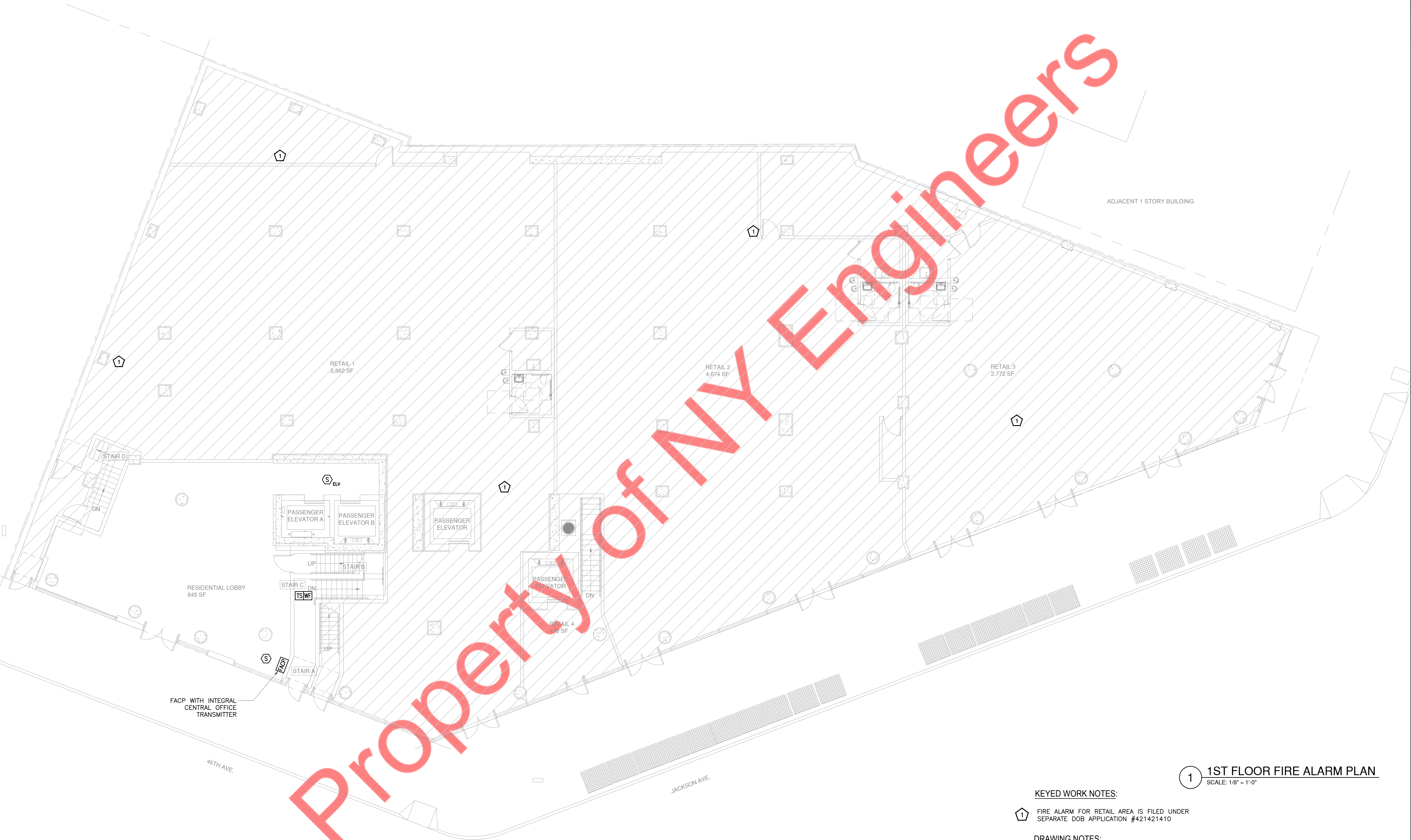
KEYED WORK NOTES:

- 1 FIRE ALARM FOR RETAIL AREA IS FILED UNDER  
SEPARATE DOB APPLICATION #421421410

DRAWING NOTES:

- REFER TO DWG. FA-001.00 FOR FIRE ALARM SYMBOL LIST,  
ABBREVIATIONS AND FIRE ALARM RISER DIAGRAM AND  
FA-002.00 FOR FIRE ALARM NOTES
- FINAL CONDUIT/CABLE ROUTING SHALL BE DETERMINED  
IN-FIELD, AND PRIOR TO THE COMMENCEMENT OF WORK,  
COORDINATED WITH OTHER TRADE CONTRACTORS AND THE  
OWNER.





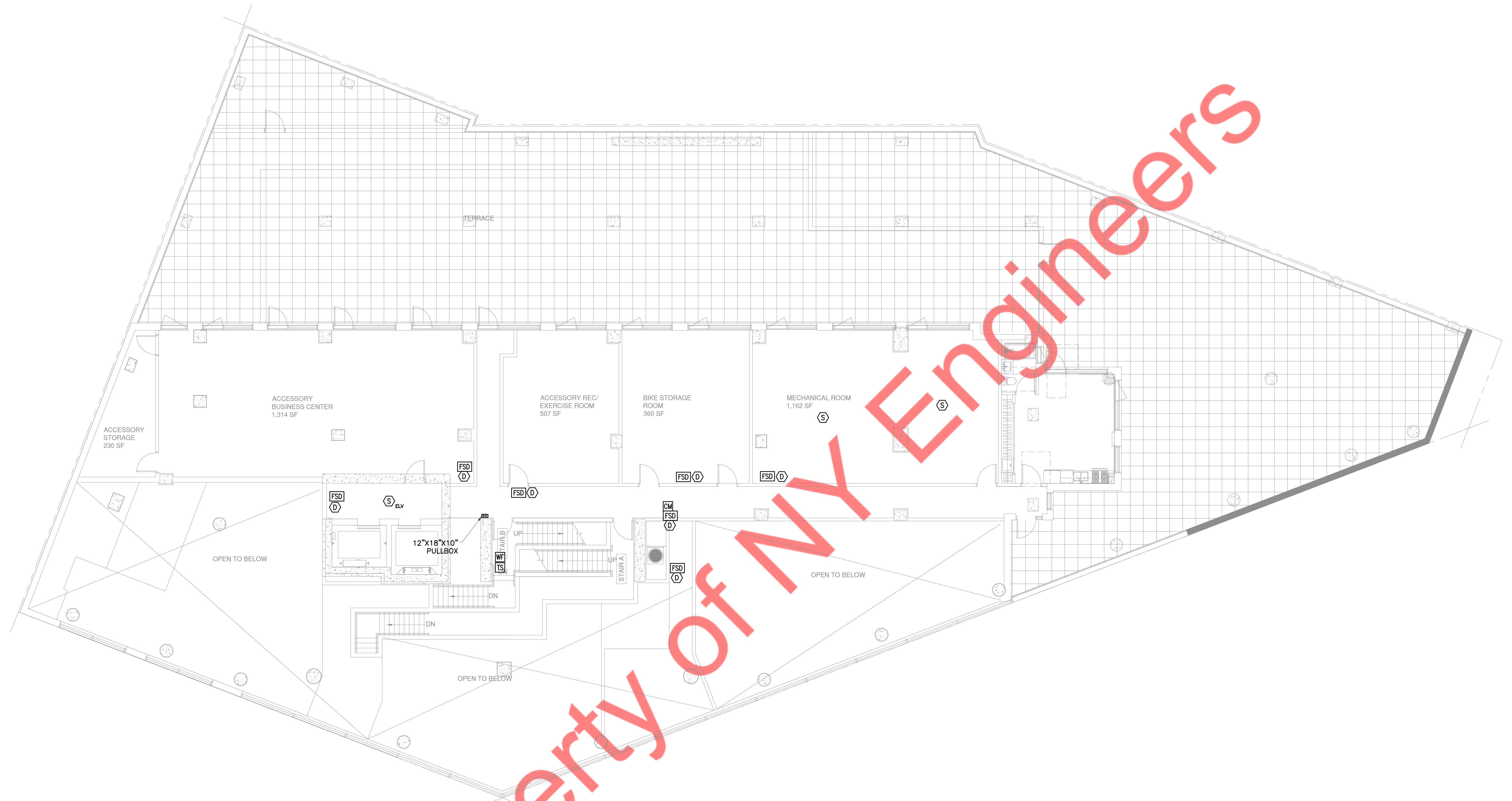
**1 1ST FLOOR FIRE ALARM PLAN**  
SCALE: 1/8" = 1'-0"

**KEYED WORK NOTES:**

- 1** FIRE ALARM FOR RETAIL AREA IS FILED UNDER SEPARATE DOB APPLICATION #421421410

**DRAWING NOTES:**

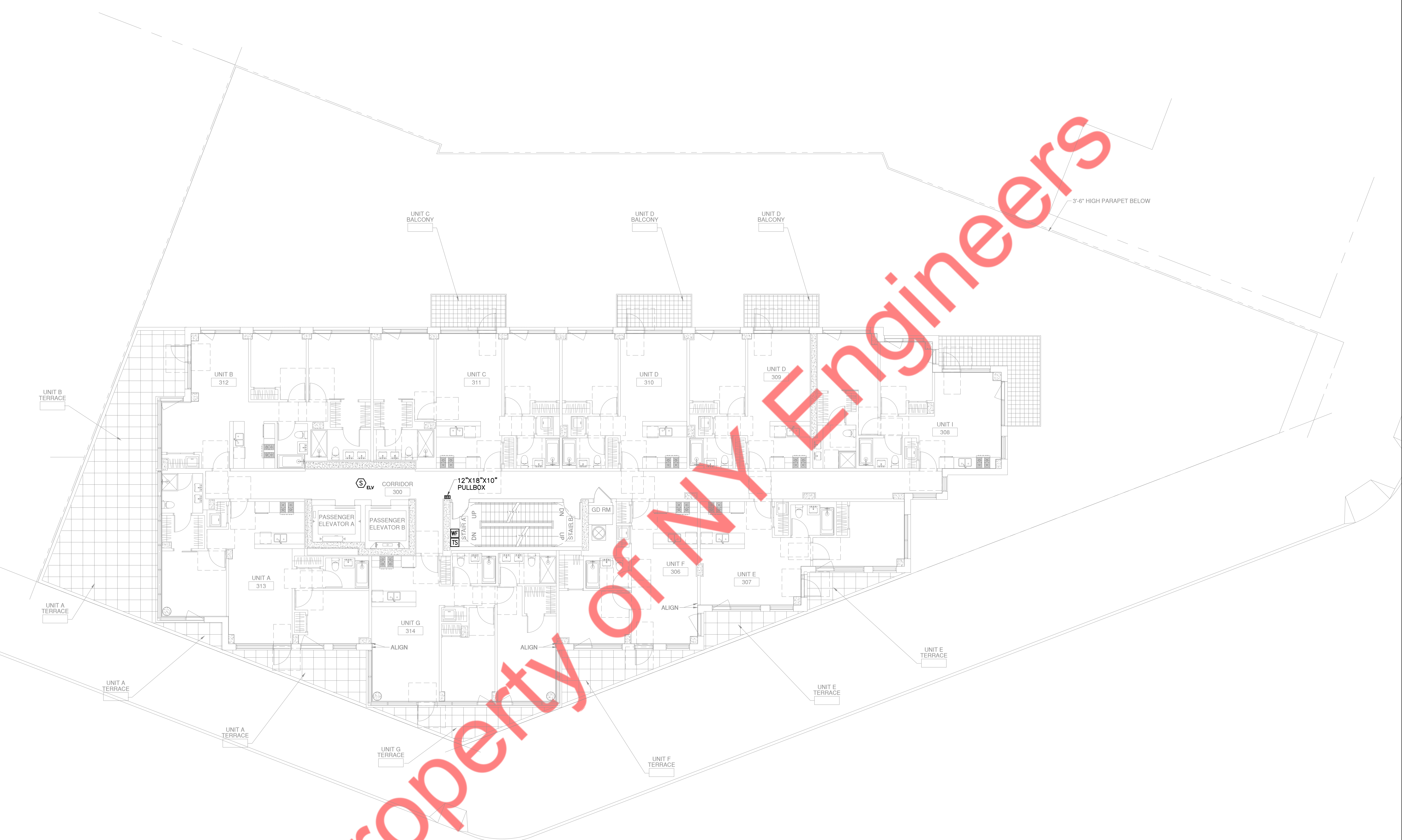
- REFER TO DWG. FA-001.00 FOR FIRE ALARM SYMBOL LIST, ABBREVIATIONS AND FIRE ALARM RISER DIAGRAM AND FA-002.00 FOR FIRE ALARM NOTES.
- FINAL CONDUIT/CABLE ROUTING SHALL BE DETERMINED IN-FIELD, AND PRIOR TO THE COMMENCEMENT OF WORK, COORDINATED WITH OTHER TRADE CONTRACTORS AND THE OWNER.



1 2ND FLOOR FIRE ALARM PLAN  
SCALE: 1/8" = 1'-0"

- DRAWING NOTES:
1. REFER TO DWG. FA-001.00 FOR FIRE ALARM SYMBOL LIST, ABBREVIATIONS AND FIRE ALARM RISER DIAGRAM AND FA-002.00 FOR FIRE ALARM NOTES.
  2. FINAL CONDUIT/CABLE ROUTING SHALL BE DETERMINED IN-FIELD, AND PRIOR TO THE COMMENCEMENT OF WORK, COORDINATED WITH OTHER TRADE CONTRACTORS AND THE OWNER.

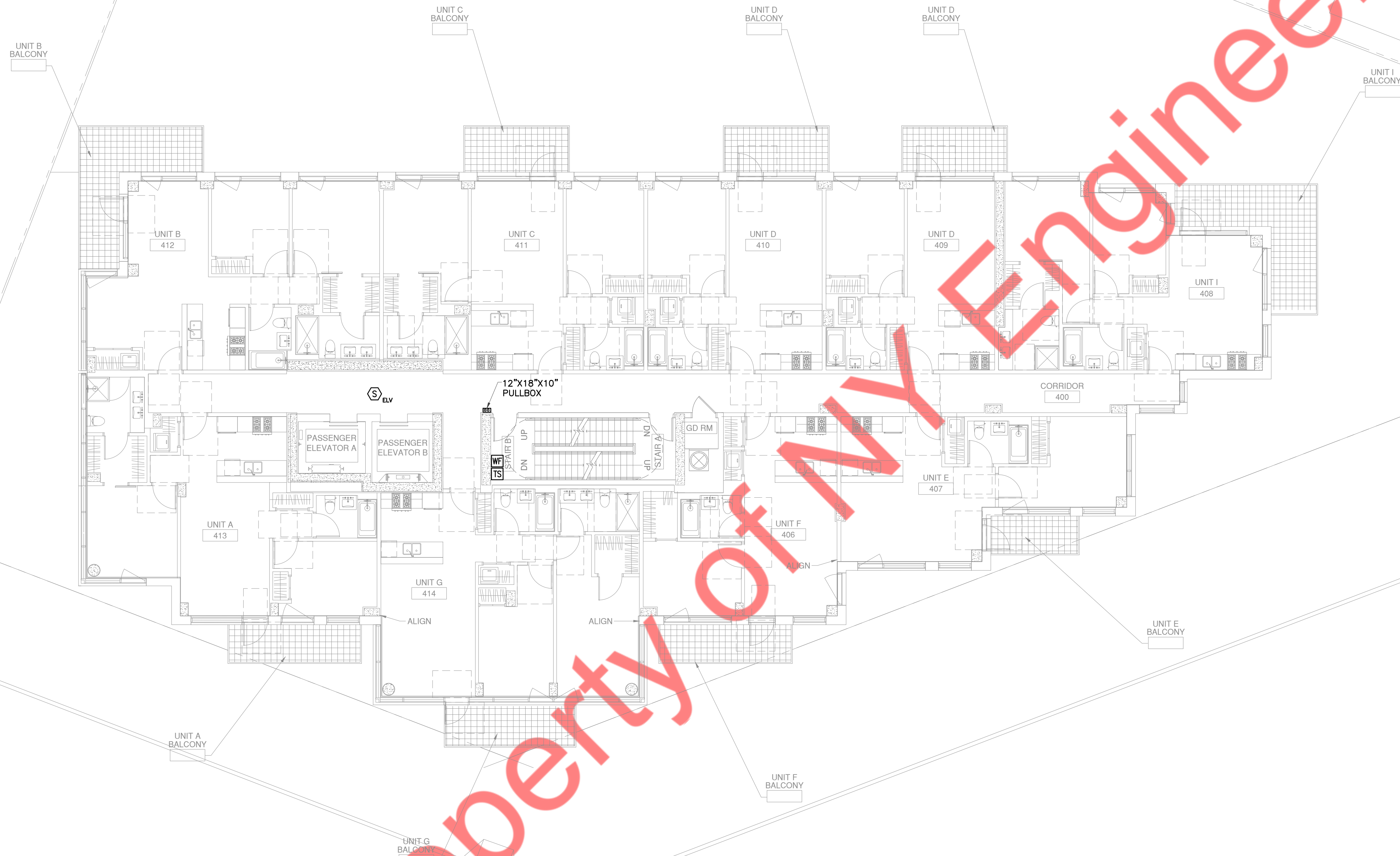




1 3RD FLOOR FIRE ALARM PLAN  
SCALE: 1/8" = 1'-0"

DRAWING NOTES:

1. REFER TO DWG. FA-001.00 FOR FIRE ALARM SYMBOL LIST, ABBREVIATIONS AND FIRE ALARM RISER DIAGRAM AND FA-002.00 FOR FIRE ALARM NOTES.
2. FINAL CONDUIT/CABLE ROUTING SHALL BE DETERMINED IN-FIELD, AND PRIOR TO THE COMMENCEMENT OF WORK, COORDINATED WITH OTHER TRADE CONTRACTORS AND THE OWNER.

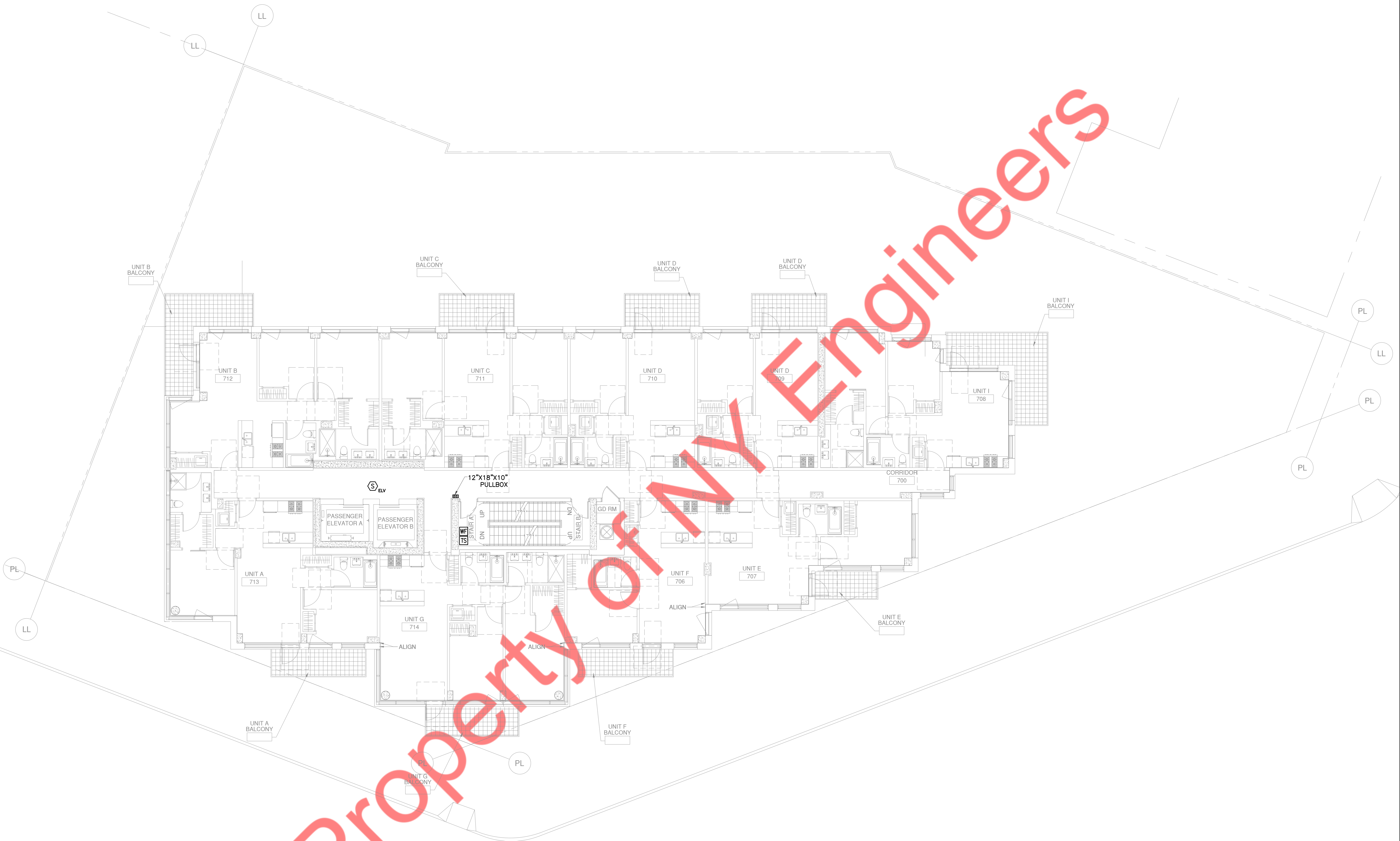


1 TYPICAL 4TH TO 6TH FLOOR FIRE ALARM PLANS  
SCALE: 1/8" = 1'-0"

DRAWING NOTES:

1. REFER TO DWG. FA-001.00 FOR FIRE ALARM SYMBOL LIST, ABBREVIATIONS AND FIRE ALARM RISER DIAGRAM AND FA-002.00 FOR FIRE ALARM NOTES.
2. FINAL CONDUIT/CABLE ROUTING SHALL BE DETERMINED IN-FIELD, AND PRIOR TO THE COMMENCEMENT OF WORK, COORDINATED WITH OTHER TRADE CONTRACTORS AND THE OWNER.





1

TYPICAL 7TH TO 8TH FLOOR FIRE ALARM PLANS

SCALE: 1/8" = 1'-0"

DRAWING NOTES:

1. REFER TO DWG. FA-001.00 FOR FIRE ALARM SYMBOL LIST, ABBREVIATIONS AND FIRE ALARM RISER DIAGRAM AND FA-002.00 FOR FIRE ALARM NOTES.
2. FINAL CONDUIT/CABLE ROUTING SHALL BE DETERMINED IN-FIELD, AND PRIOR TO THE COMMENCEMENT OF WORK, COORDINATED WITH OTHER TRADE CONTRACTORS AND THE OWNER.





UNIT J  
BALCONY

UNIT C  
BALCONY

UNIT N  
BALCONY

UNIT N  
BALCONY

UNIT I  
BALCONY

UNIT C  
1008

UNIT N  
1007

UNIT I  
1006

UNIT J  
1009

ELV

12"x18"x10"  
PULLBOX

CORRIDOR  
1000

PASSENGER  
ELEVATOR A

PASSENGER  
ELEVATOR B

WF  
STAIR B

UP  
DN

NG  
STAIR A

GD RM

UNIT G  
1010

UNIT G  
TERRACE

UNIT G  
TERRACE

UNIT G  
BALCONY

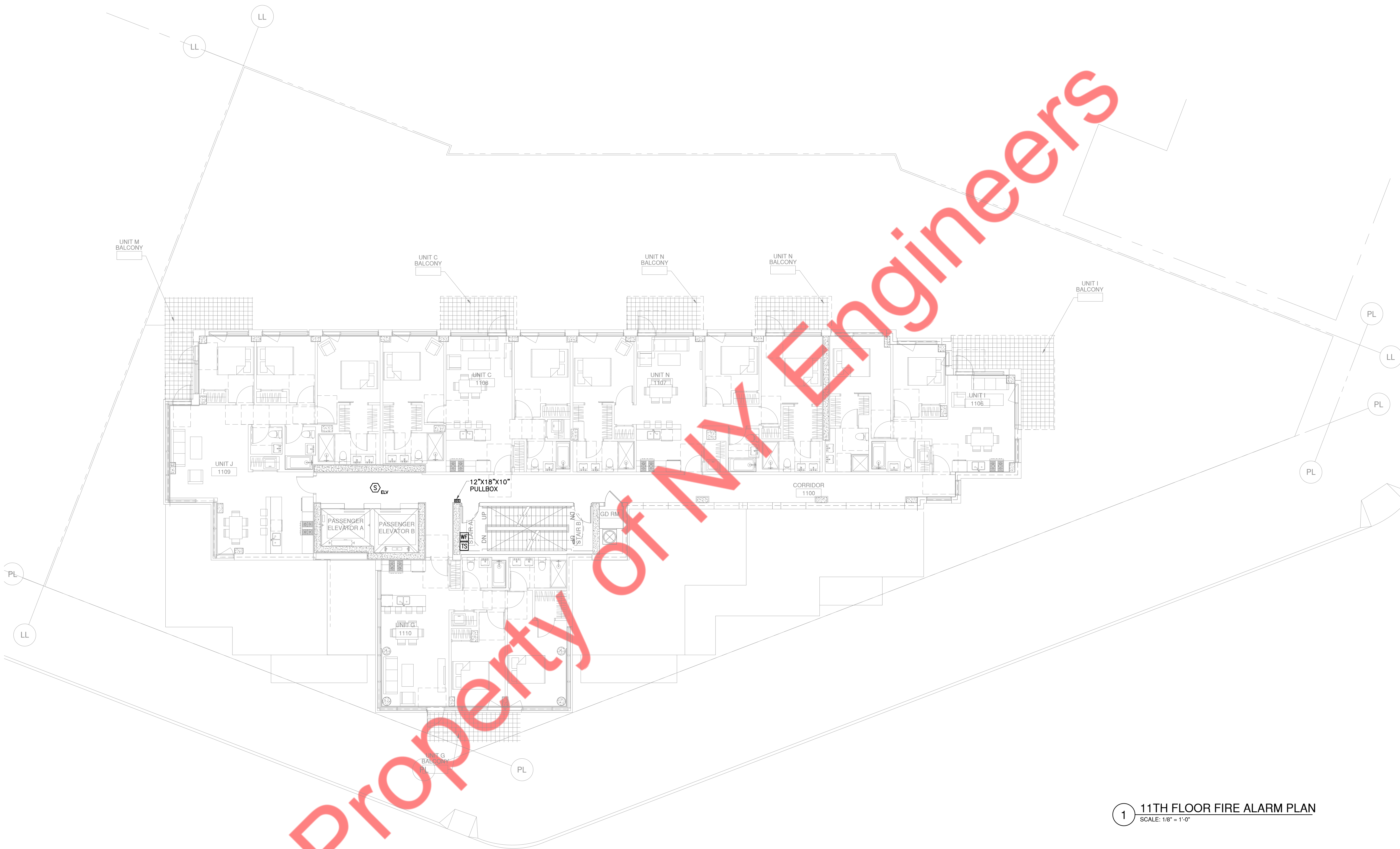
LINE OF FLOOR  
BELOW

1 10TH FLOOR FIRE ALARM PLAN  
SCALE: 1/8" = 1'-0"

DRAWING NOTES:

1. REFER TO DWG. FA-001.00 FOR FIRE ALARM SYMBOL LIST, ABBREVIATIONS AND FIRE ALARM RISER DIAGRAM AND FA-002.00 FOR FIRE ALARM NOTES.
2. FINAL CONDUIT/CABLE ROUTING SHALL BE DETERMINED IN-FIELD, AND PRIOR TO THE COMMENCEMENT OF WORK, COORDINATED WITH OTHER TRADE CONTRACTORS AND THE OWNER.

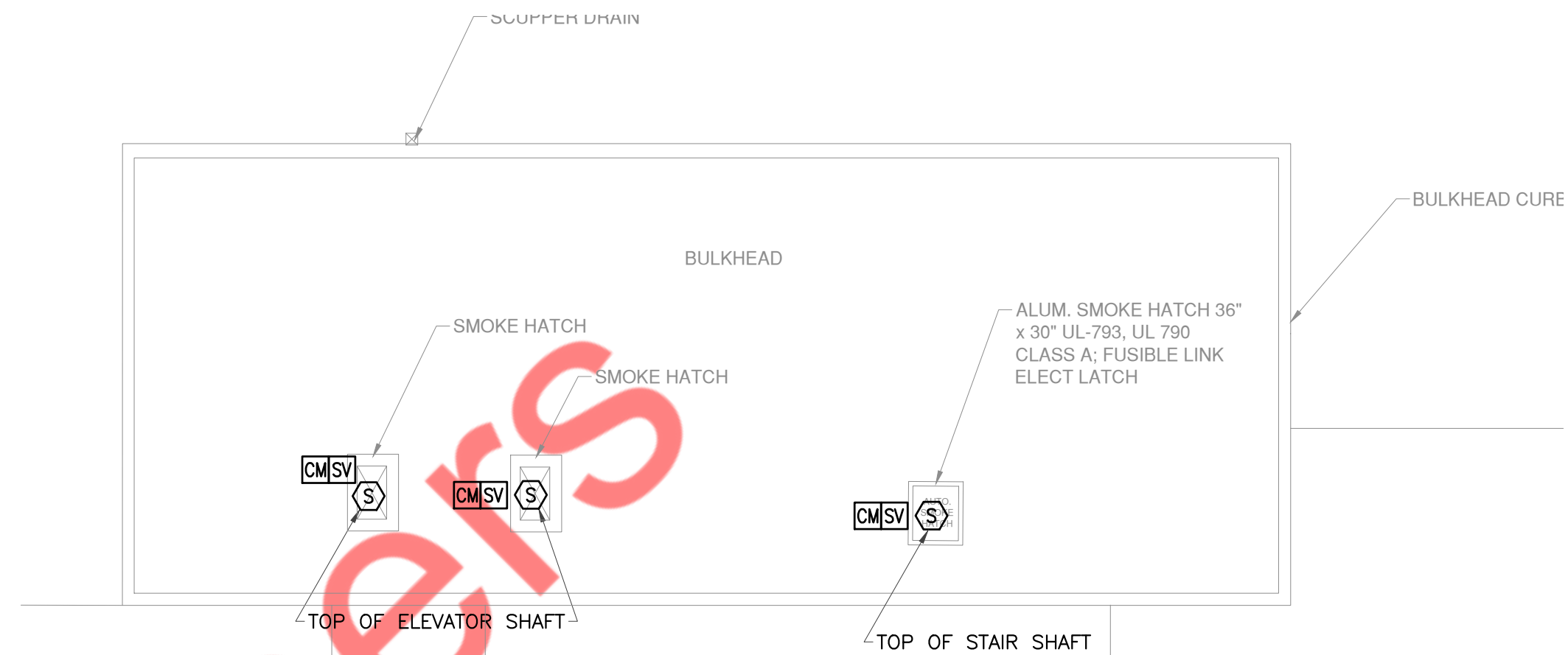




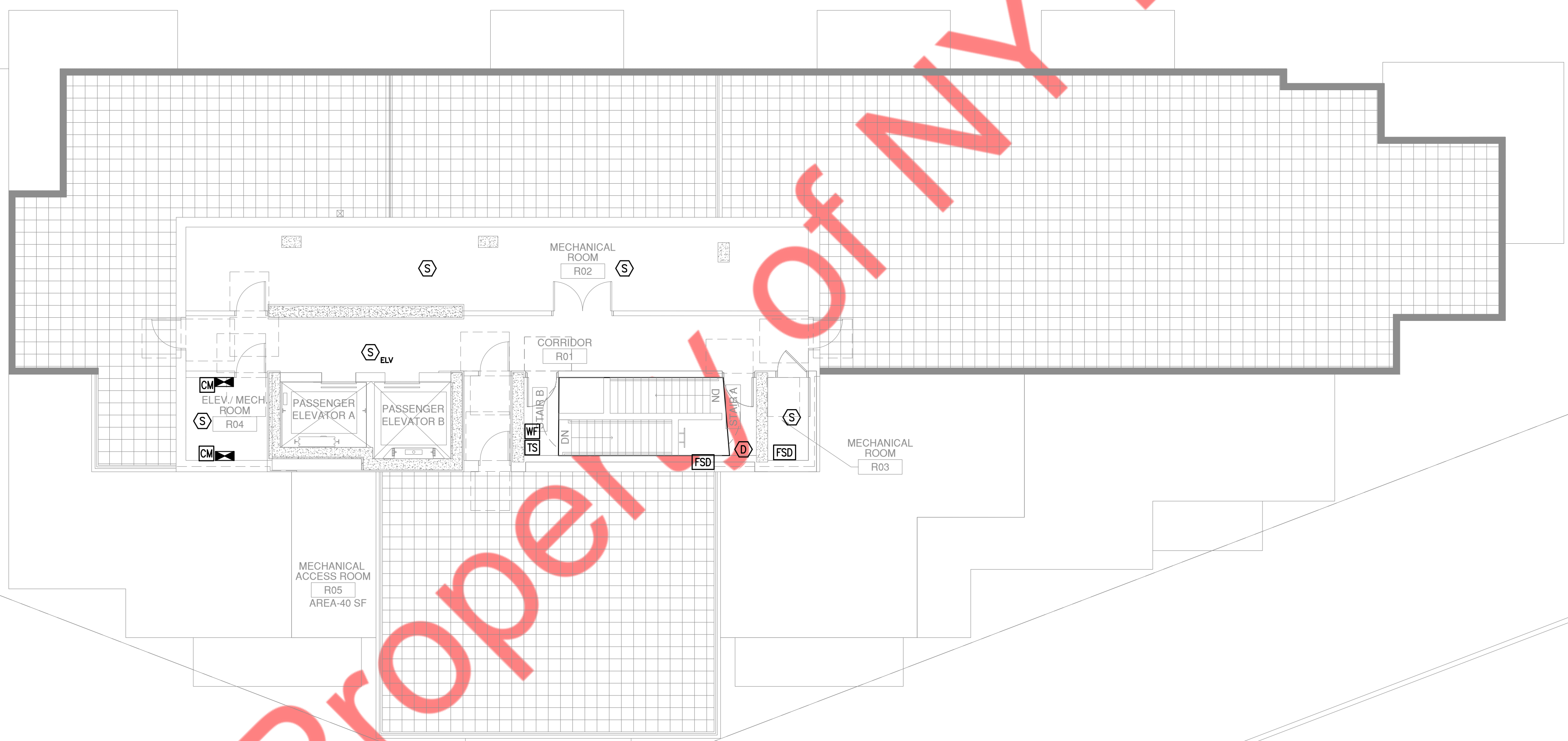
**1 11TH FLOOR FIRE ALARM PLAN**  
SCALE: 1/8" = 1'-0"

**DRAWING NOTES:**

1. REFER TO DWG. FA-001.00 FOR FIRE ALARM SYMBOL LIST, ABBREVIATIONS AND FIRE ALARM RISER DIAGRAM AND FA-002.00 FOR FIRE ALARM NOTES.
2. FINAL CONDUIT/CABLE ROUTING SHALL BE DETERMINED IN-FIELD, AND PRIOR TO THE COMMENCEMENT OF WORK, COORDINATED WITH OTHER TRADE CONTRACTORS AND THE OWNER.



2 BULKHEAD FIRE ALARM PART PLAN  
SCALE: 1/8" = 1'-0"



1 ROOF FIRE ALARM PLAN  
SCALE: 1/8" = 1'-0"

DRAWING NOTES:

1. REFER TO DWG. FA-001.00 FOR FIRE ALARM SYMBOL LIST, ABBREVIATIONS AND FIRE ALARM RISER DIAGRAM AND FA-002.00 FOR FIRE ALARM NOTES.
2. FINAL CONDUIT/CABLE ROUTING SHALL BE DETERMINED IN-FIELD, AND PRIOR TO THE COMMENCEMENT OF WORK, COORDINATED WITH OTHER TRADE CONTRACTORS AND THE OWNER.