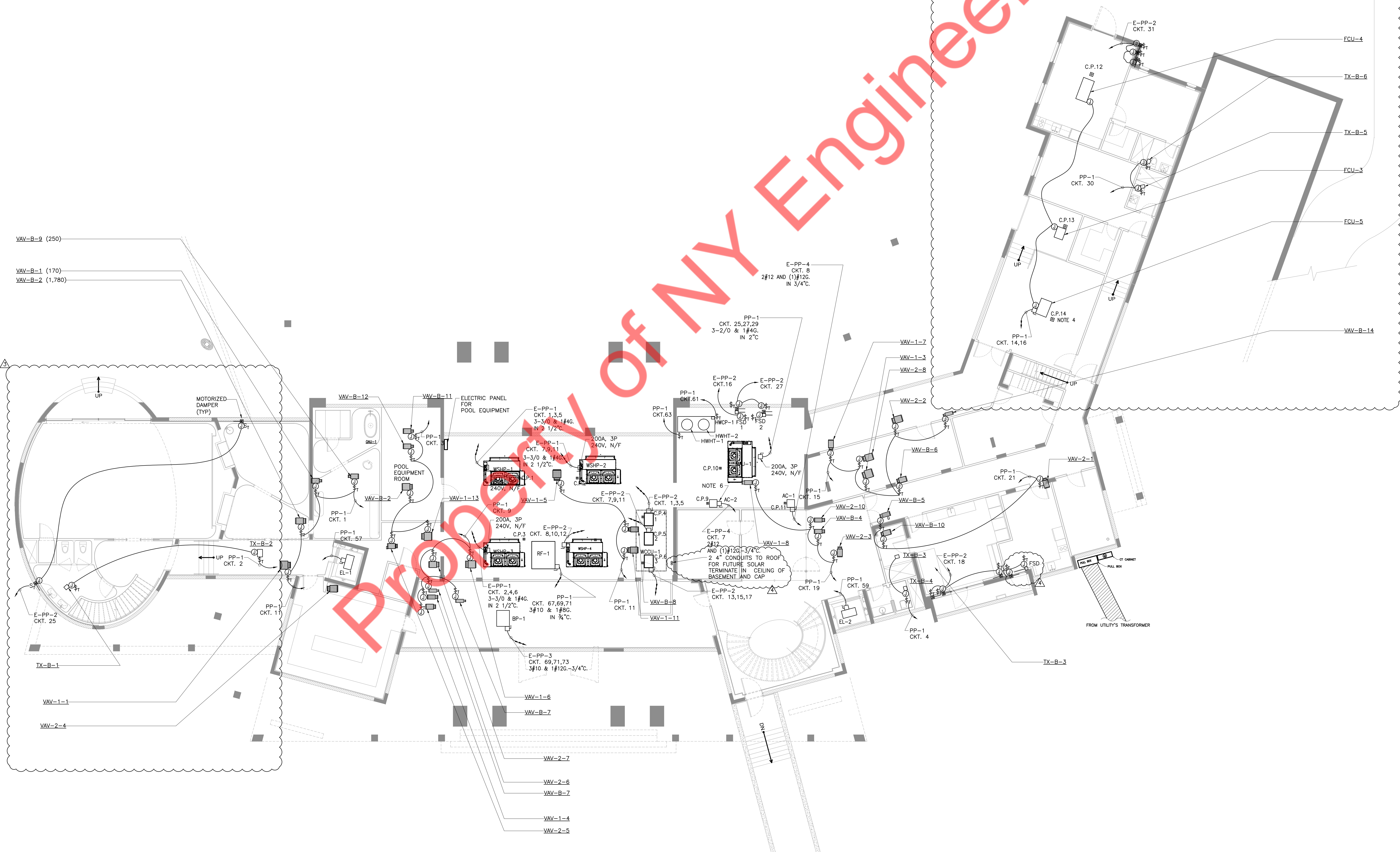
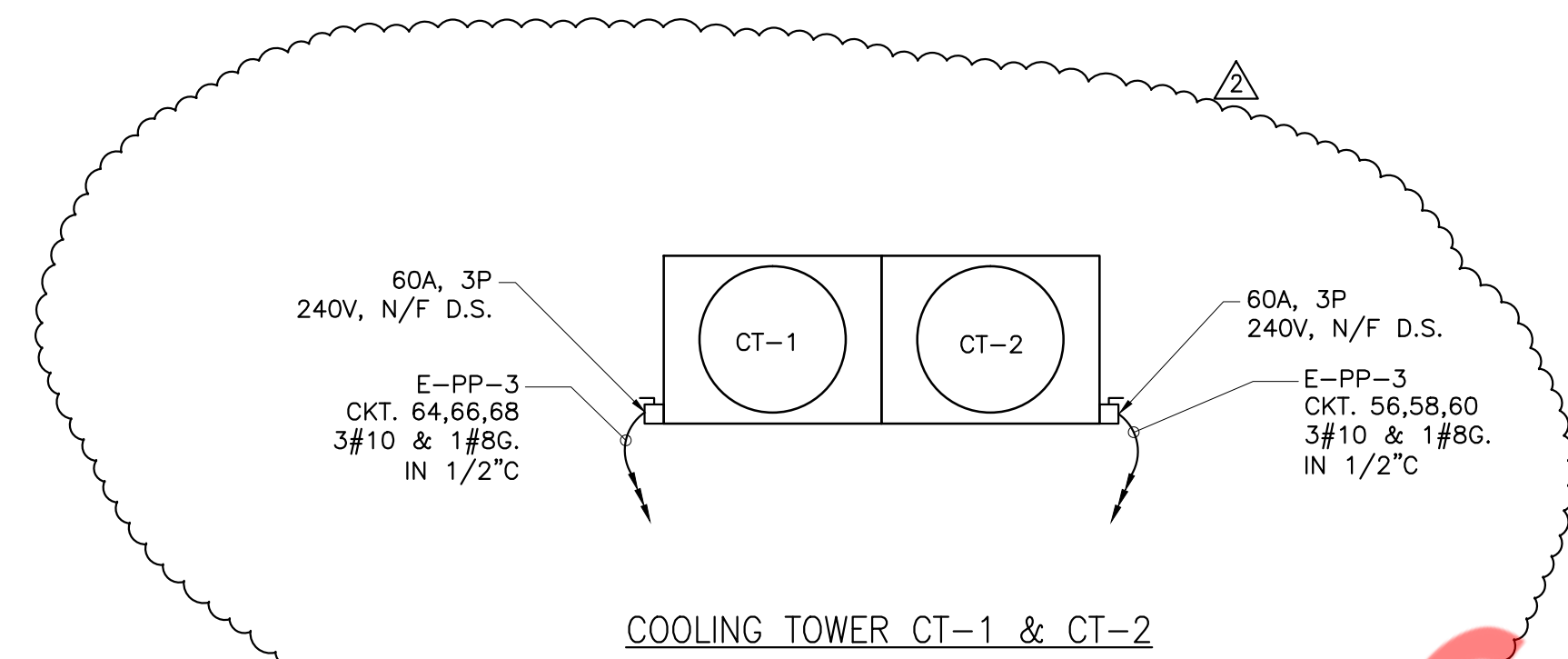


NOTES:

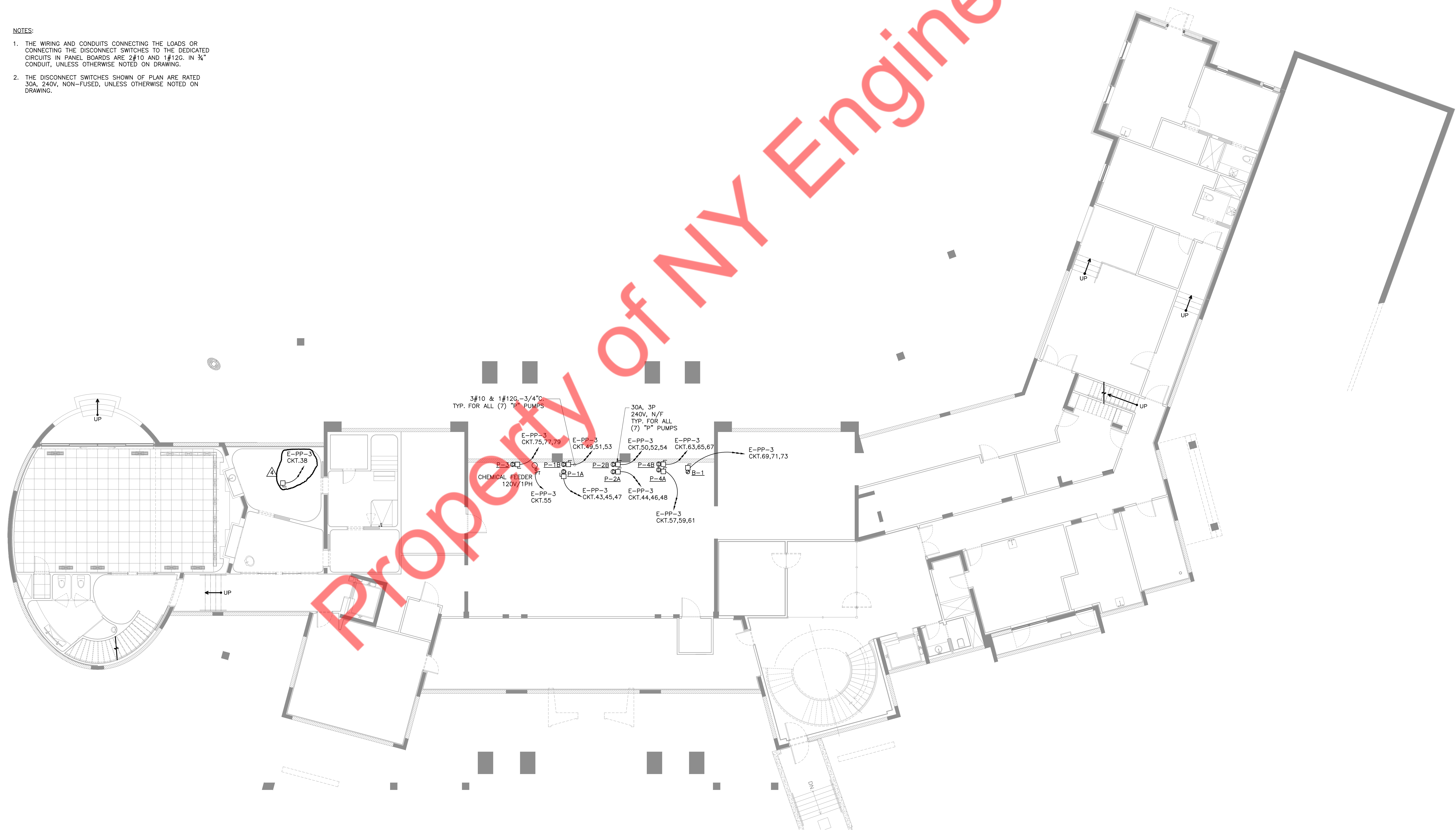
- CONDENSING PUMPS C.P.1, C.P.2, C.P.3 ARE CONNECTED TO CKT. 13 OF PANEL E-PP-1.
- CONDENSING PUMPS C.P.4, C.P.5, C.P.6, C.P.7 ARE CONNECTED TO CKT. 14 OF PANEL E-PP-2.
- CONDENSING PUMPS C.P.9, C.P.10, C.P.11 ARE CONNECTED TO CKT. 9 OF PANEL E-PP-4.
- CONDENSING PUMPS C.P.12, C.P.13, C.P.14 ARE CONNECTED TO CKT. 24 OF PANEL PP-1.
- 240V, 30A UNFUSED DISCONNECT SWITCHES: ONE FOR AC-2 AND ONE FOR ACC-2.
- 240V, 30A UNFUSED DISCONNECT SWITCHES.
- THE WIRING AND CONDUITS CONNECTING THE LOADS OR CONNECTING THE DISCONNECT SWITCHES TO THE DEDICATED CIRCUITS IN PANEL BOARDS ARE 2#10 AND 1#12G. IN 3/4" CONDUIT, UNLESS OTHERWISE NOTED ON DRAWING.
- THE DISCONNECT SWITCHES SHOWN OF PLAN ARE RATED 30A, 240V, NON-FUSED, UNLESS OTHERWISE NOTED ON DRAWING.
- PROVIDE MINIMUM CLEARANCE IN FRONT OF ALL PANELS AS REQUIRED BY THE NATIONAL ELECTRICAL CODE.



Draft of NY Engineers

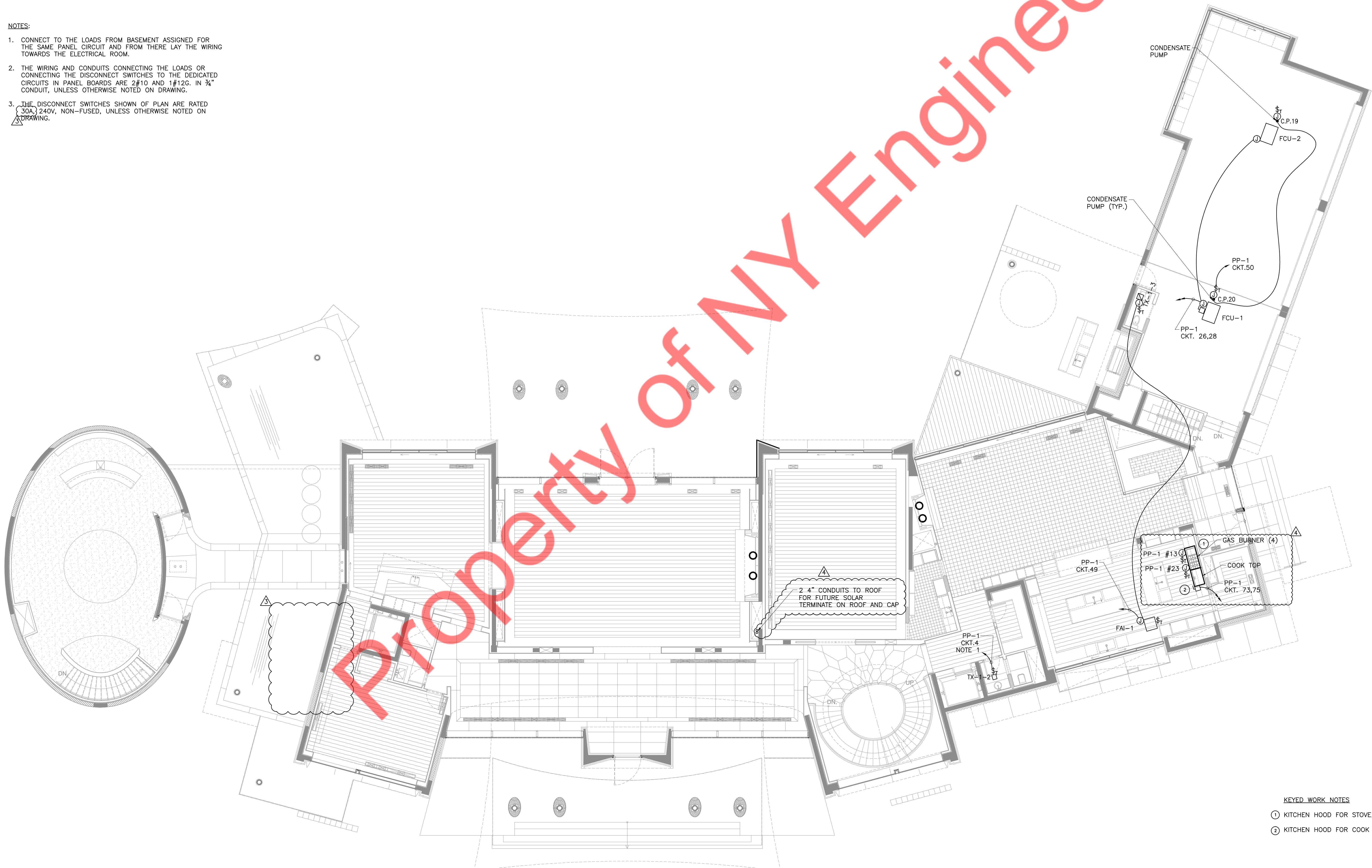
NOTES:

1. THE WIRING AND CONDUITS CONNECTING THE LOADS OR CONNECTING THE DISCONNECT SWITCHES TO THE DEDICATED CIRCUITS IN PANEL BOARDS ARE 2#10 AND 1#12G. IN 3/4" CONDUIT, UNLESS OTHERWISE NOTED ON DRAWING.
2. THE DISCONNECT SWITCHES SHOWN OF PLAN ARE RATED 30A, 240V, NON-FUSED, UNLESS OTHERWISE NOTED ON DRAWING.



NOTES:

1. CONNECT TO THE LOADS FROM BASEMENT ASSIGNED FOR THE SAME PANEL CIRCUIT AND FROM THERE LAY THE WIRING TOWARDS THE ELECTRICAL ROOM.
2. THE WIRING AND CONDUITS CONNECTING THE LOADS OR CONNECTING THE DISCONNECT SWITCHES TO THE DEDICATED CIRCUITS IN PANEL BOARDS ARE 2#10 AND 1#12G. IN 3/4" CONDUIT, UNLESS OTHERWISE NOTED ON DRAWING.
3. THE DISCONNECT SWITCHES SHOWN OF PLAN ARE RATED (30A, 240V, NON-FUSED, UNLESS OTHERWISE NOTED ON DRAWING.



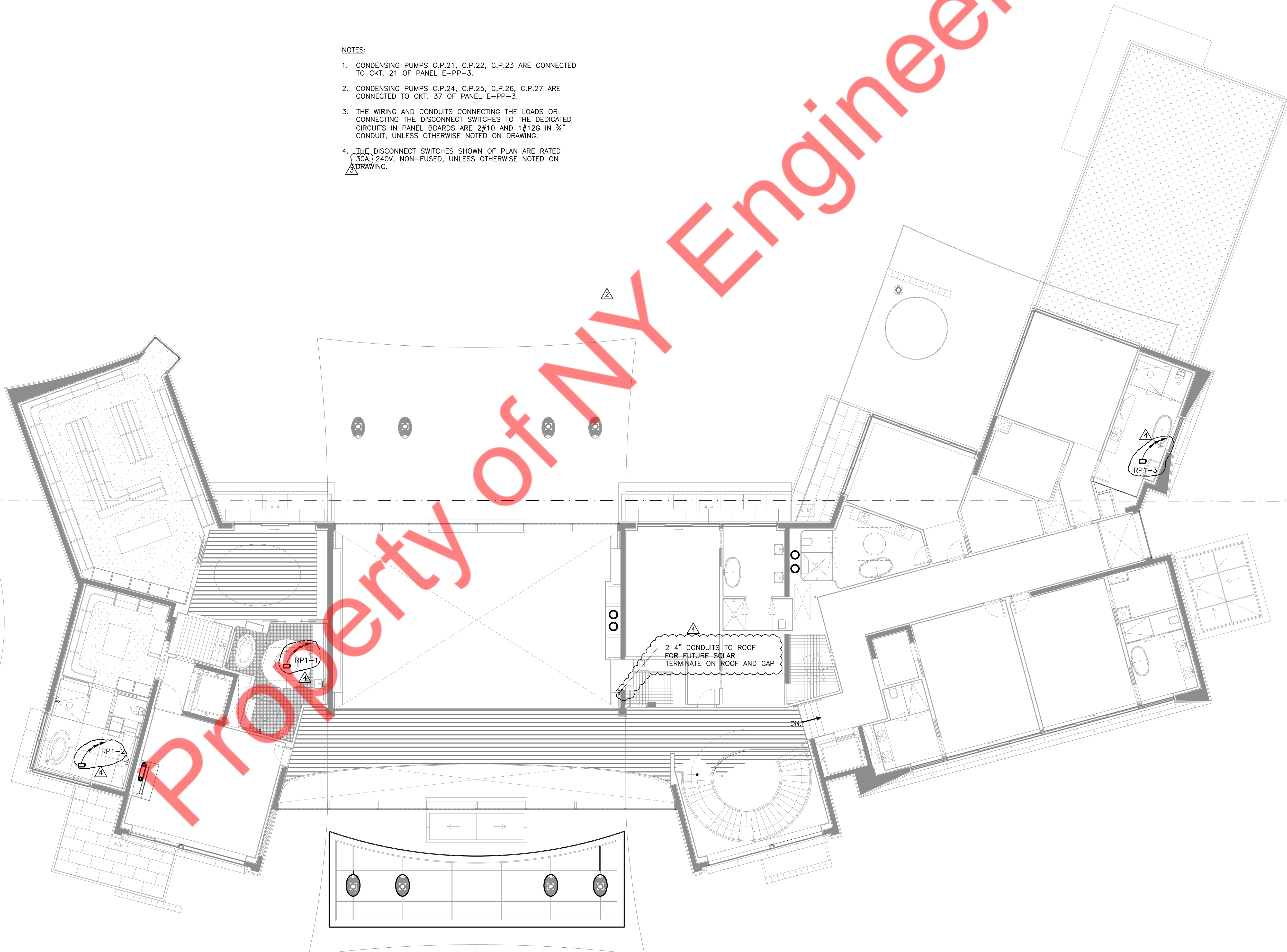
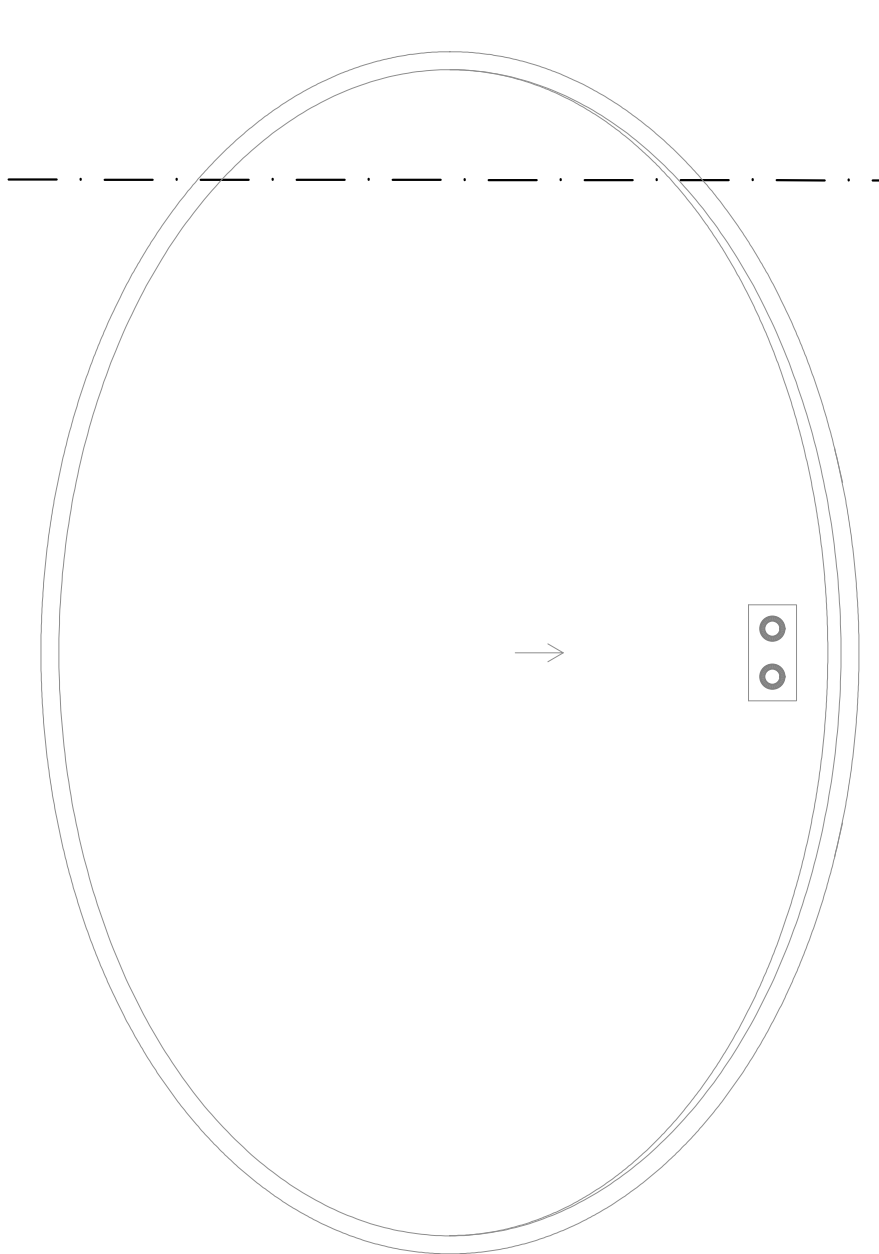
KEYED WORK NOTES

- ① KITCHEN HOOD FOR STOVE, FED BY PP-1 #17, 2#12, 1#12G. IN 3/4" C.
- ② KITCHEN HOOD FOR COOK TOP, FED BY PP-1 #77, 2#12, 1#12G. IN 3/4" C.



NOTES:

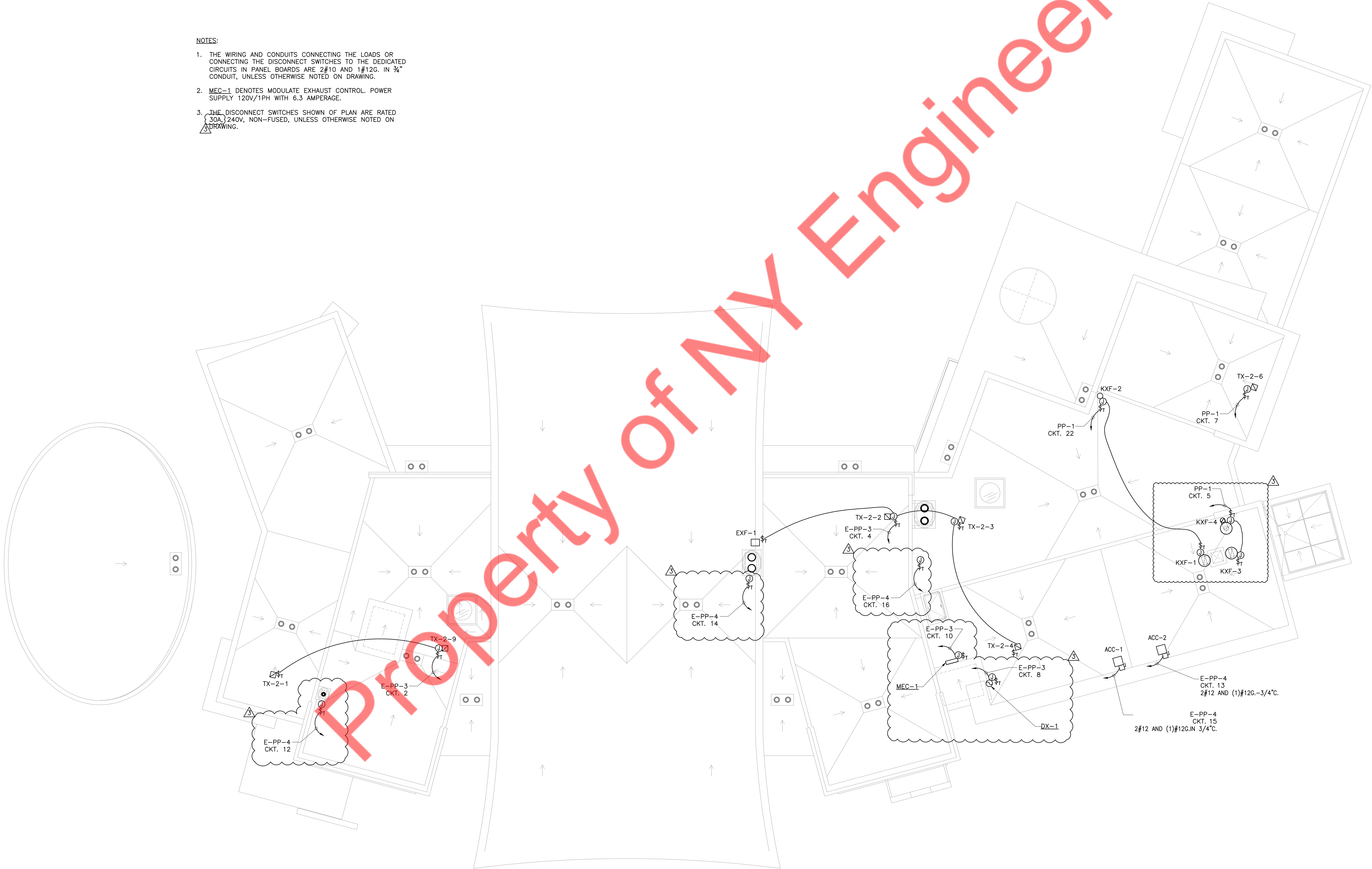
1. CONDENSING PUMPS C.P.21, C.P.22, C.P.23 ARE CONNECTED TO CKT. 21 OF PANEL E-PP-3.
2. CONDENSING PUMPS C.P.24, C.P.25, C.P.26, C.P.27 ARE CONNECTED TO CKT. 37 OF PANEL E-PP-3.
3. THE WIRING AND CONDUITS CONNECTING THE LOADS OR CONNECTING THE DISCONNECT SWITCHES TO THE DEDICATED CIRCUITS IN PANEL BOARDS ARE 2#10 AND 1#12G IN 3/4" CONDUIT, UNLESS OTHERWISE NOTED ON DRAWING.
4. THE DISCONNECT SWITCHES SHOWN OF PLAN ARE RATED 30A, 240V, NON-FUSED, UNLESS OTHERWISE NOTED ON DRAWING.

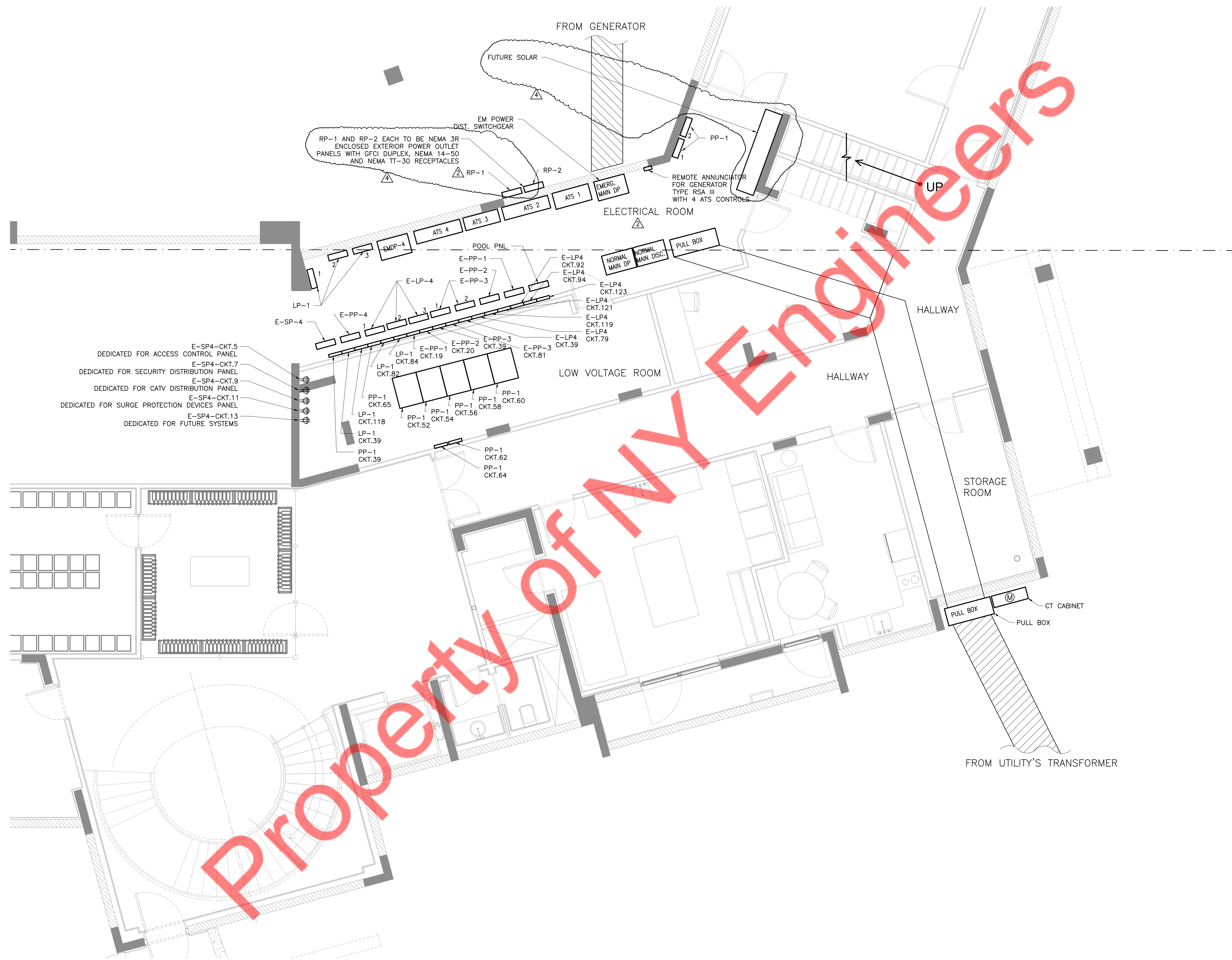


Property of NY Engineers

NOTES:

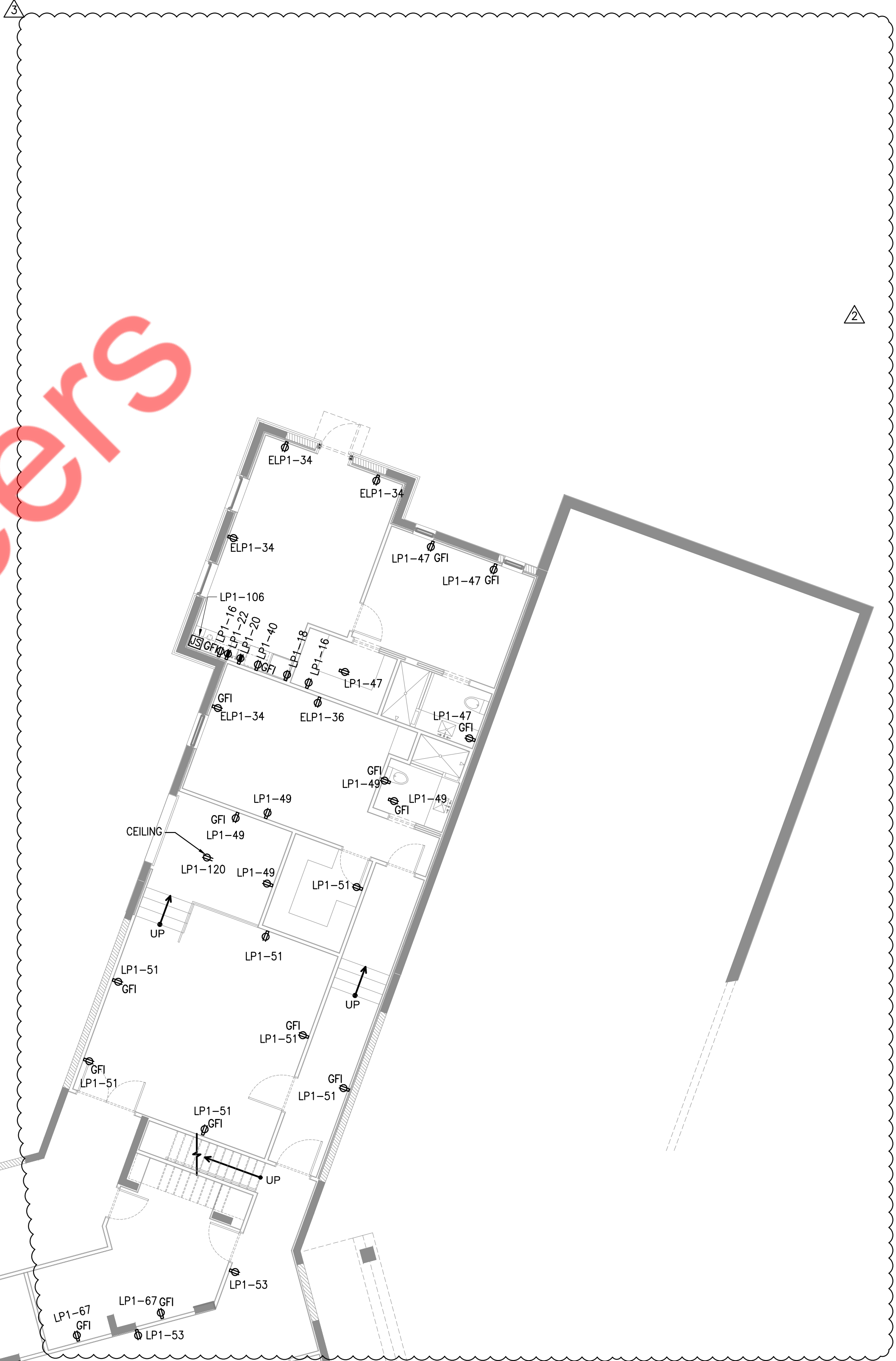
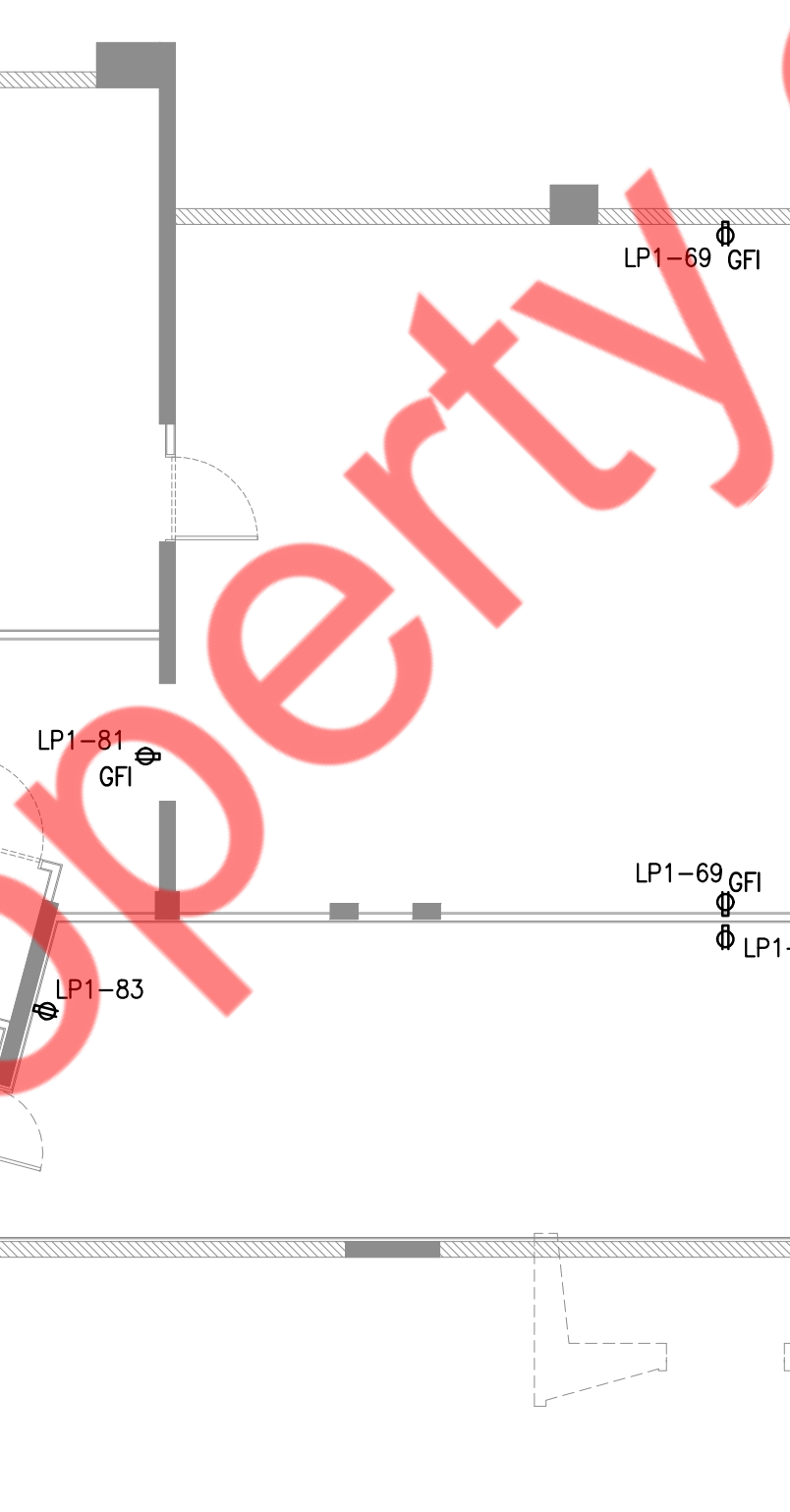
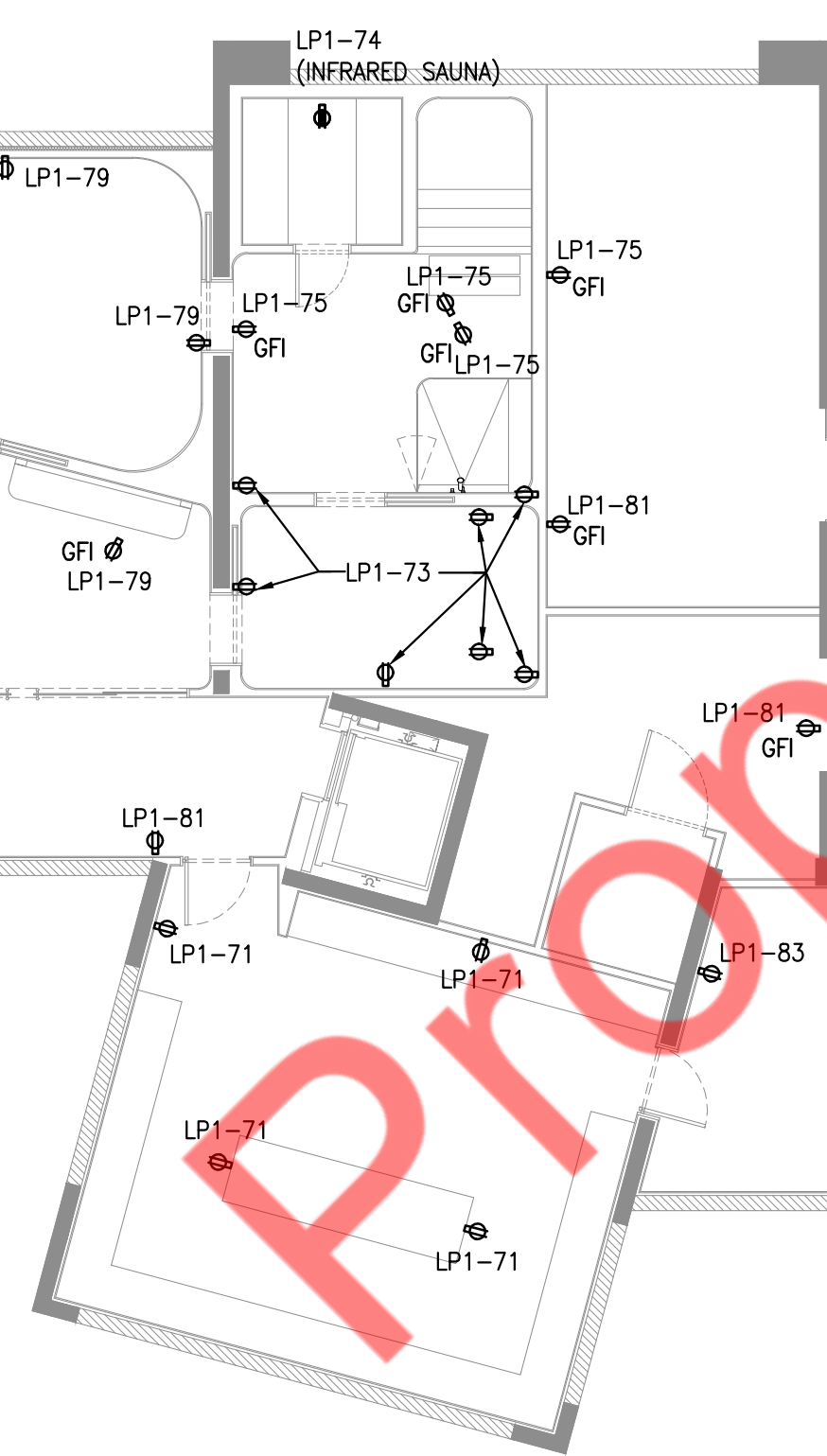
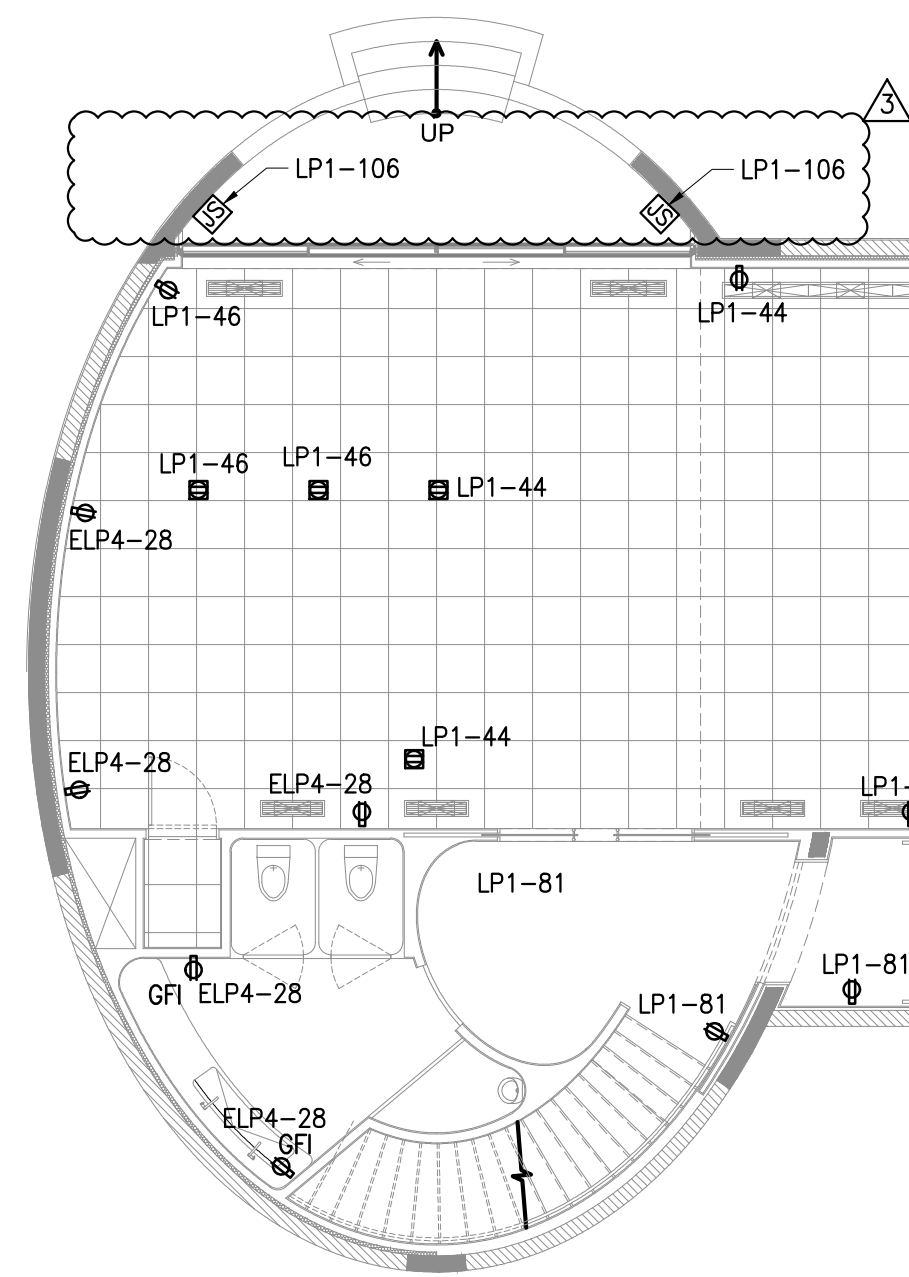
1. THE WIRING AND CONDUITS CONNECTING THE LOADS OR CONNECTING THE DISCONNECT SWITCHES TO THE DEDICATED CIRCUITS IN PANEL BOARDS ARE 2#10 AND 1#12G. IN 3/4" CONDUIT, UNLESS OTHERWISE NOTED ON DRAWING.
2. MEC-1 DENOTES MODULATE EXHAUST CONTROL. POWER SUPPLY 120V/1PH WITH 6.3 AMPERAGE.
3. THE DISCONNECT SWITCHES SHOWN OF PLAN ARE RATED 30A, 240V, NON-FUSED, UNLESS OTHERWISE NOTED ON DRAWING.





CELLAR LEVEL — ELECTRICAL ROOM AND INTERIOR FEEDER LAYOUT

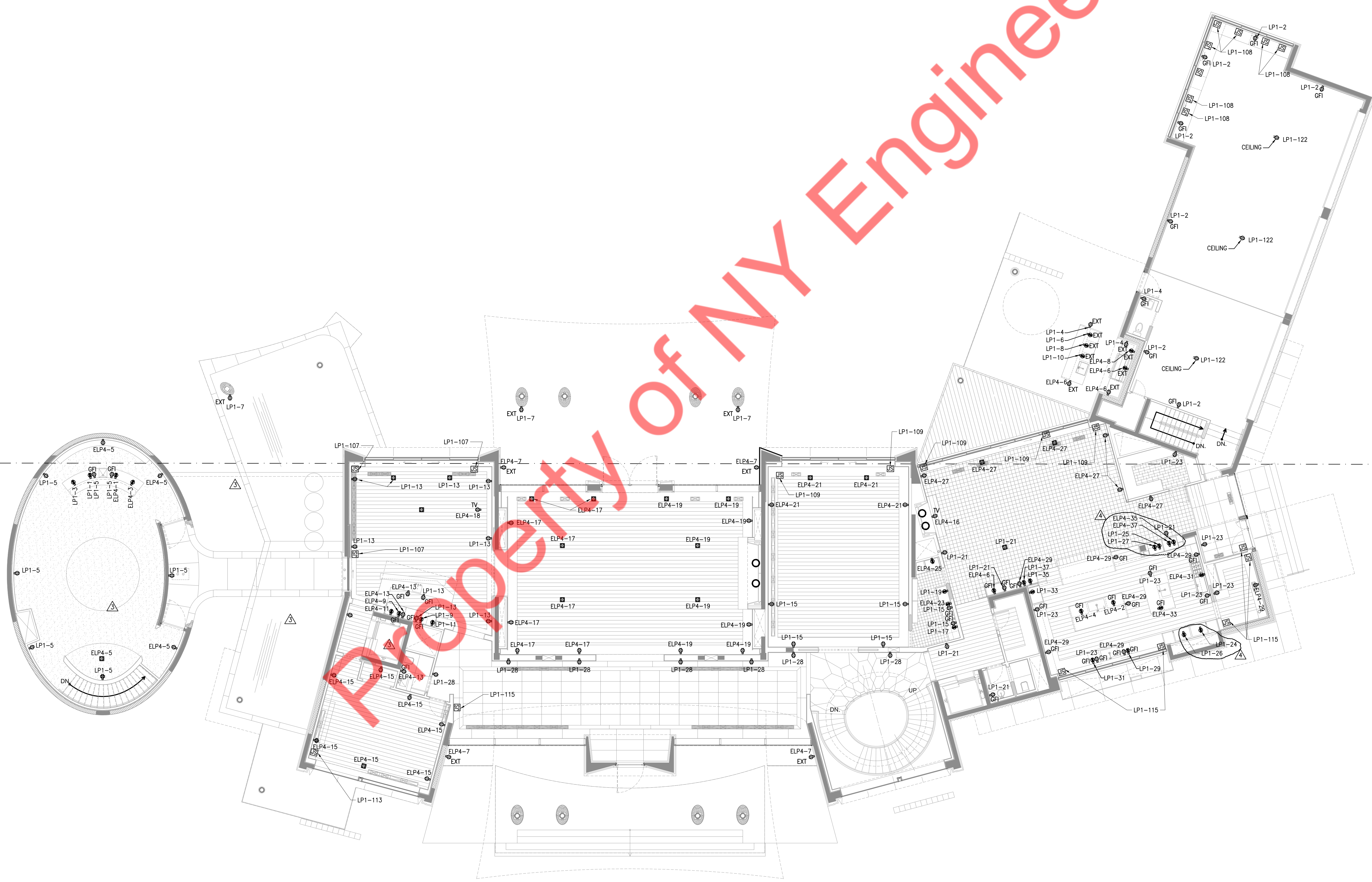
SCALE: 1/4" = 1' - 0"

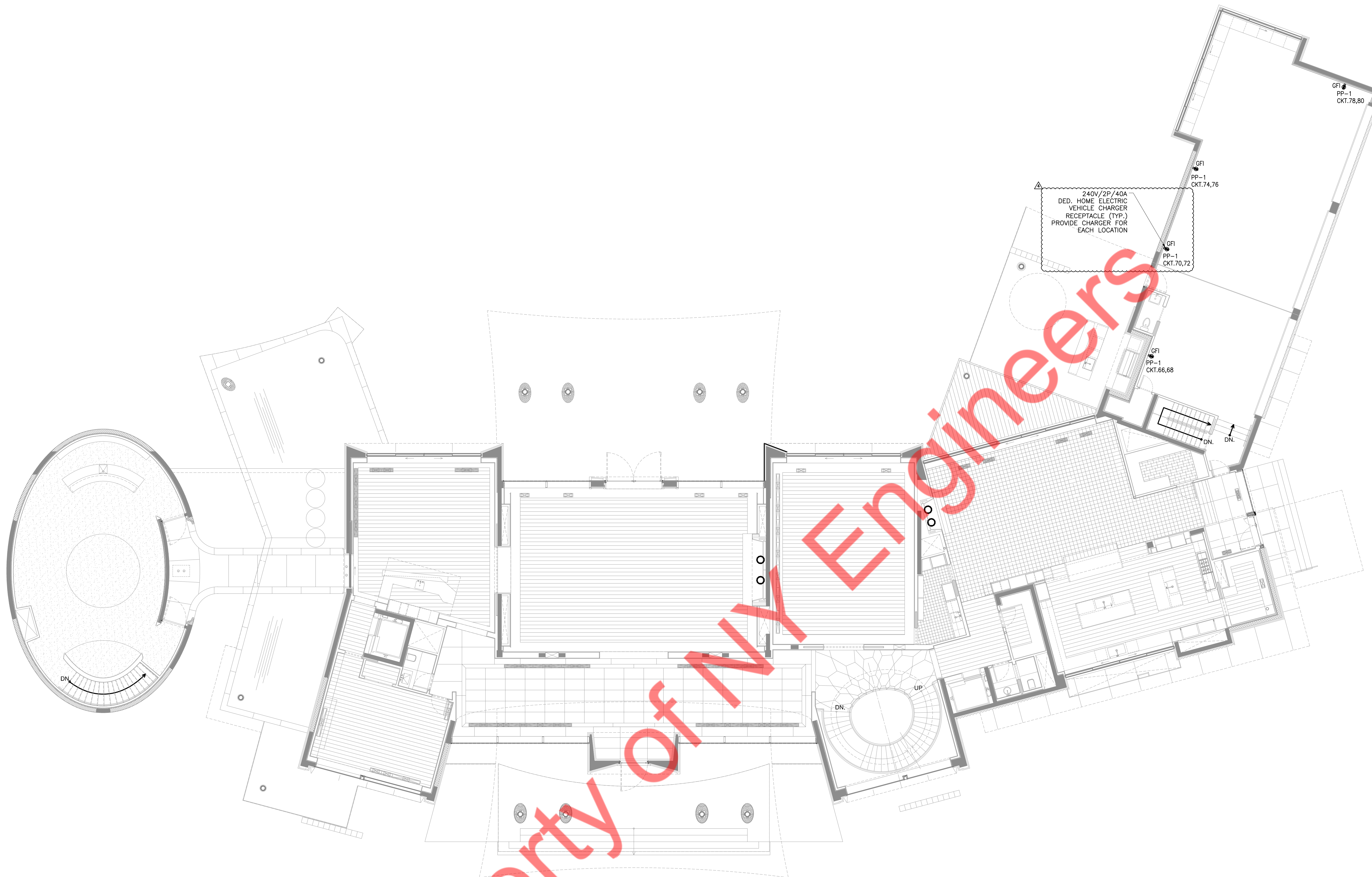


Property of NY Engineers



Property of NY Engineers





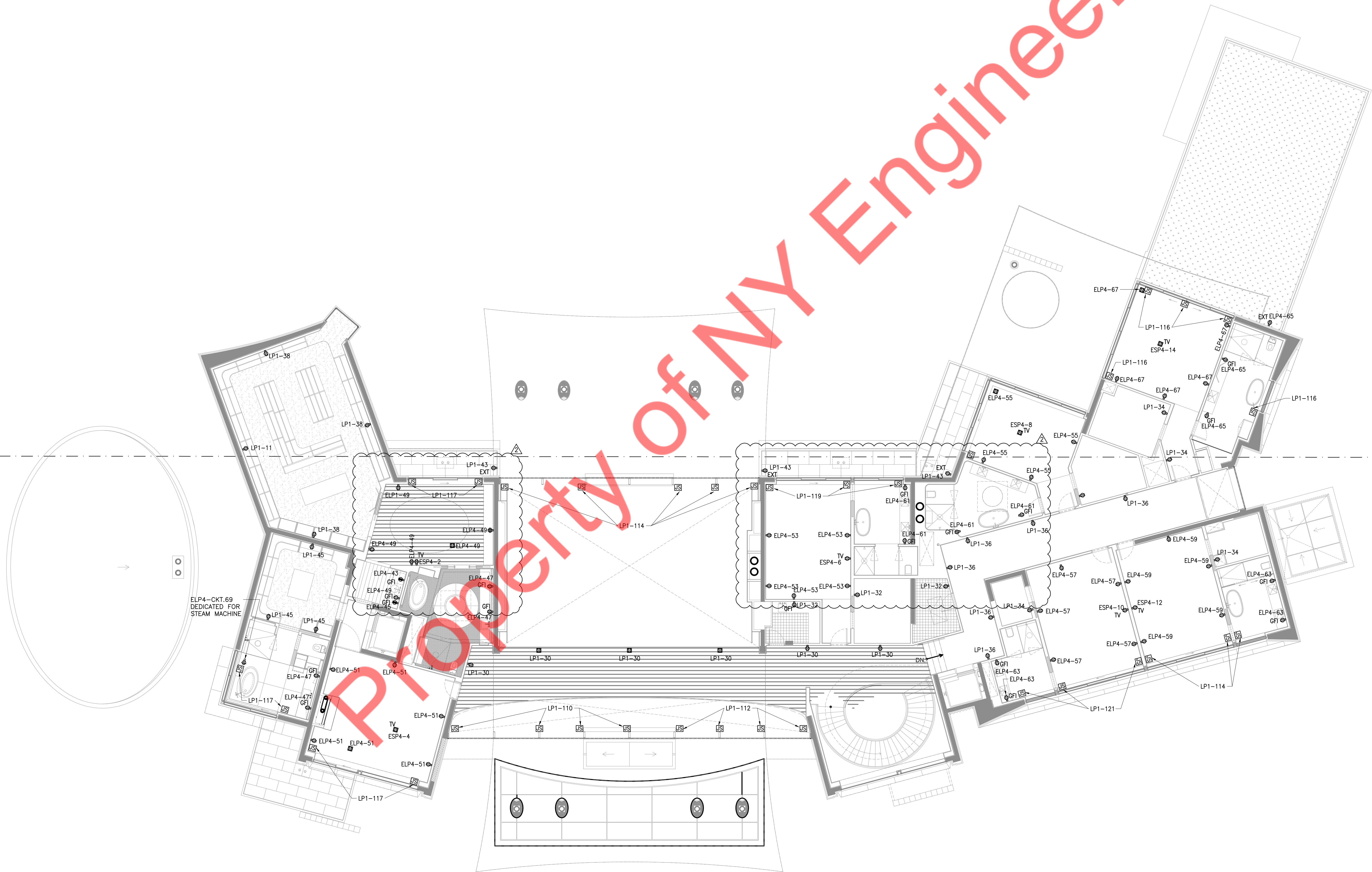
1 FIRST FLOOR HOME ELECTRIC VEHICLE CHARGER POWER PLAN
 SCALE: 1/8" = 1'-0"

HOME ELECTRIC VEHICLE CHARGER SPECIFICATIONS	
BRAND	ELECTRIC MOTOR WORKS, INC.
ITEM MODEL #	INPR_BU_40A20FT
VOLTAGE	120 - 240V
WATTAGE	15 KW
ITEM WEIGHT & DIMENSION	18LB, 10X6X3.5 INCHES
CORD LENGTH	24FT
MANUFACTURER PART #	INPR_BU_40A20FT

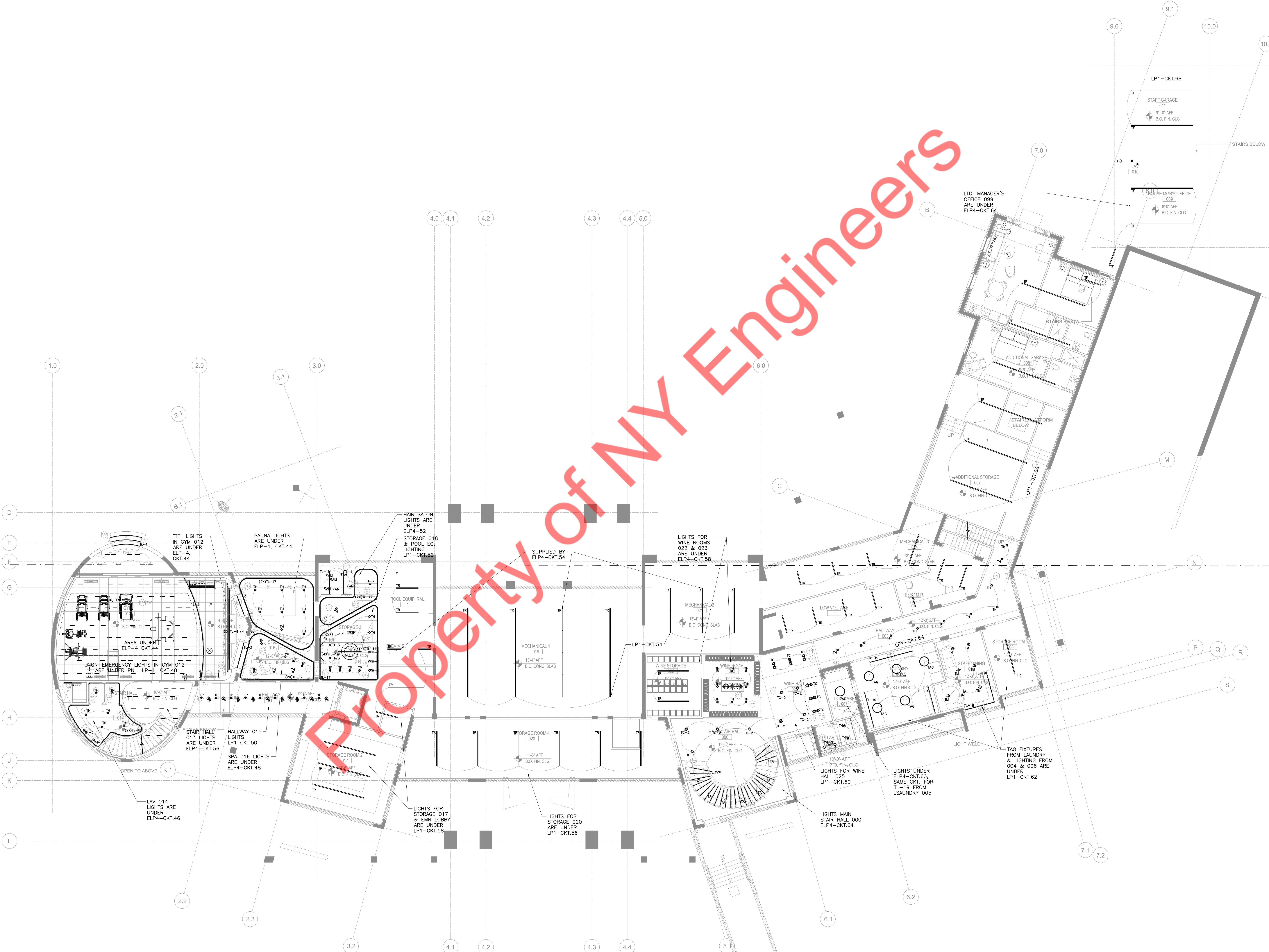
GENERAL NOTES

1. ELECTRICAL CONTRACTOR SHALL COMPLY WITH ALL LOCAL LAW INCLUDING OBTAINING REQUIRED PERMIT PRIOR TO COMMENCEMENT OF WORK RELATED TO HOME ELECTRIC VEHICLE CHARGING INFRASTRUCTURE .
2. ELECTRICAL CONTRACTOR SHALL PROVIDE AND INSTALL ALL ROUGH-IN EQUIPMENT NECESSARY FOR CONNECTION.
3. ELECTRICAL CONTRACTOR SHALL PROVIDE ALL POWER WIRING AND APPURTENANCES PER NEC 2014 CODE.
4. POWER OUTLET FOR ELECTRIC VEHICLE CHARGER EQUIPMENT SHALL BE LISTED & LABELED AS PER NEC 2014 SECTION 625.5.
5. THE SPACE WHERE THE ELECTRIC VEHICLE CHARGER EQUIPMENT ARE INSTALLED SHALL BE PROPERLY VENTILATED TO COMPLY WITH NEC 2014 CODE.
6. ELECTRICAL CONTRACTOR SHALL USE METAL-GLAD (MC) CABLE #8 AWG COPPER IN 3/4" CONDUIT (RGS).
7. POWER OUTLET SHALL BE STANDARD 240V/2P/40A, NEMA 14-50R.

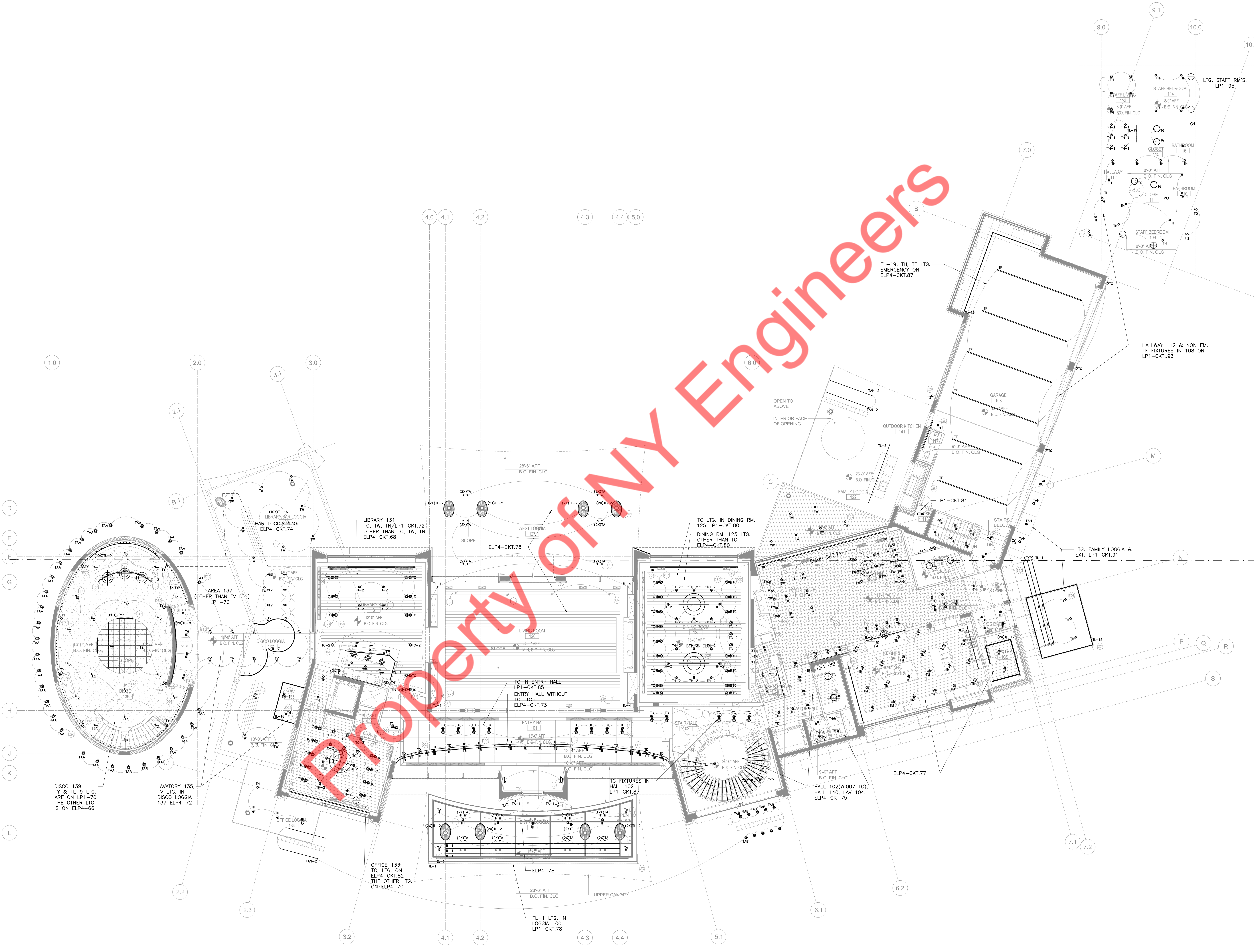
Property of NY Engineers



Property of NY Engineers



Property of NY Engineers



DISCO 139: TY & TL-9 LTC. ARE ON LP1-70 THE OTHER LTC. IS ON ELP4-66

LAVATORY 135, TV LTC. IN DISCO LOGGIA 137 ELP4-72

AREA 137 (OTHER THAN TV LTC) LP1-76

DISCO LOGGIA 137-7

LIBRARY 131: TC, TW, TN/LP1-CKT.72 OTHER THAN TC, TW, TN: ELP4-CKT.68

LIBRARY/BAR LOGGIA 130: ELP4-CKT.74

WEST LOGGIA 127

ELP4-CKT.78

TC LGT. IN DINING RM. 125 LP1-CKT.80

DINING RM. 125 LGT. OTHER THAN TC ELP4-CKT.80

TL-19, TH, TF LGT. EMERGENCY ON ELP4-CKT.87

HALLWAY 112 & NON EM. TF FIXTURES IN 108 ON LP1-CKT.93

LTC. FAMILY LOGGIA & EXT. LP1-CKT.91

OFFICE 133: TC, LTC. ON ELP4-CKT.82 THE OTHER LTC. ON ELP4-70

TL-1 LGT. IN LOGGIA 100: LP1-CKT.78

HALL 102(W.007 TC) HALL 140, LAV 104: ELP4-CKT.75

ELP4-CKT.77

LTC. STAFF RM'S: LP1-95

STAFF BEDROOM 109

BATHROOM 111

BATHROOM 115

STAFF BEDROOM 114

GARAGE 108

FAMILY LOGGIA 122

OUTDOOR KITCHEN 141

STAIRS BELOW

STAIR HALL 102

ELEVATOR HALL 101

STAIR HALL 102

ENTRY HALL 101

ENTRY HALL WITHOUT TC LGT.: ELP4-CKT.73

TC IN ENTRY HALL: LP1-CKT.85

LIV. ROOM 128

LIV. ROOM 125

LIV. ROOM 126

DISCO 139

DISCO LOGGIA 137

LIBRARY/BAR LOGGIA 130

LIBRARY 131

AREA 137

STAFF BEDROOM 114

BATHROOM 115

BATHROOM 111

STAFF BEDROOM 109

STAIRS BELOW

STAIR HALL 102

ELEVATOR HALL 101

STAIR HALL 102

ENTRY HALL 101

ENTRY HALL WITHOUT TC LGT.: ELP4-CKT.73

TC IN ENTRY HALL: LP1-CKT.85

LIV. ROOM 128

LIV. ROOM 125

LIV. ROOM 126

DISCO 139

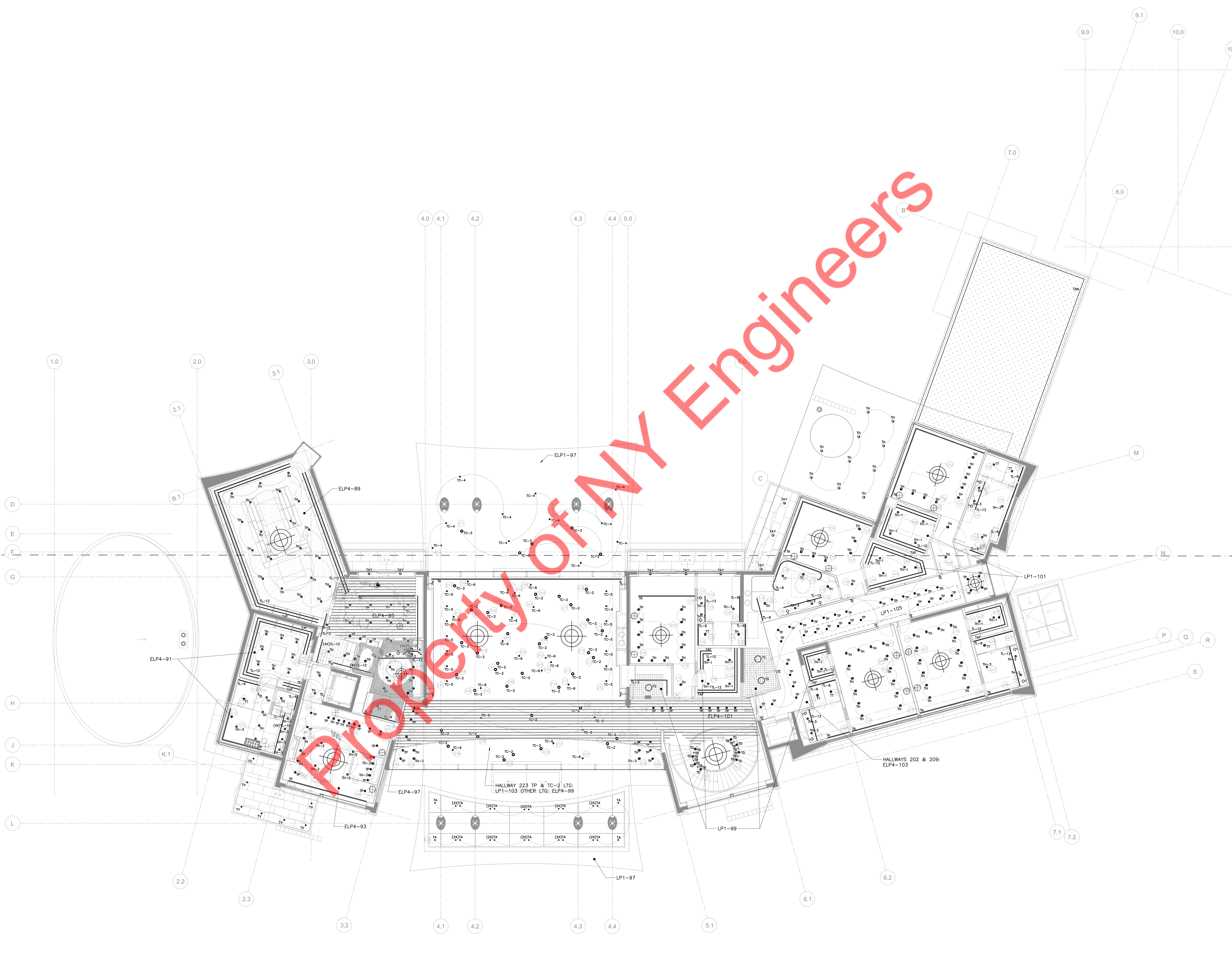
DISCO LOGGIA 137

LIBRARY/BAR LOGGIA 130

LIBRARY 131

AREA 137

Copyright of MY Engineers

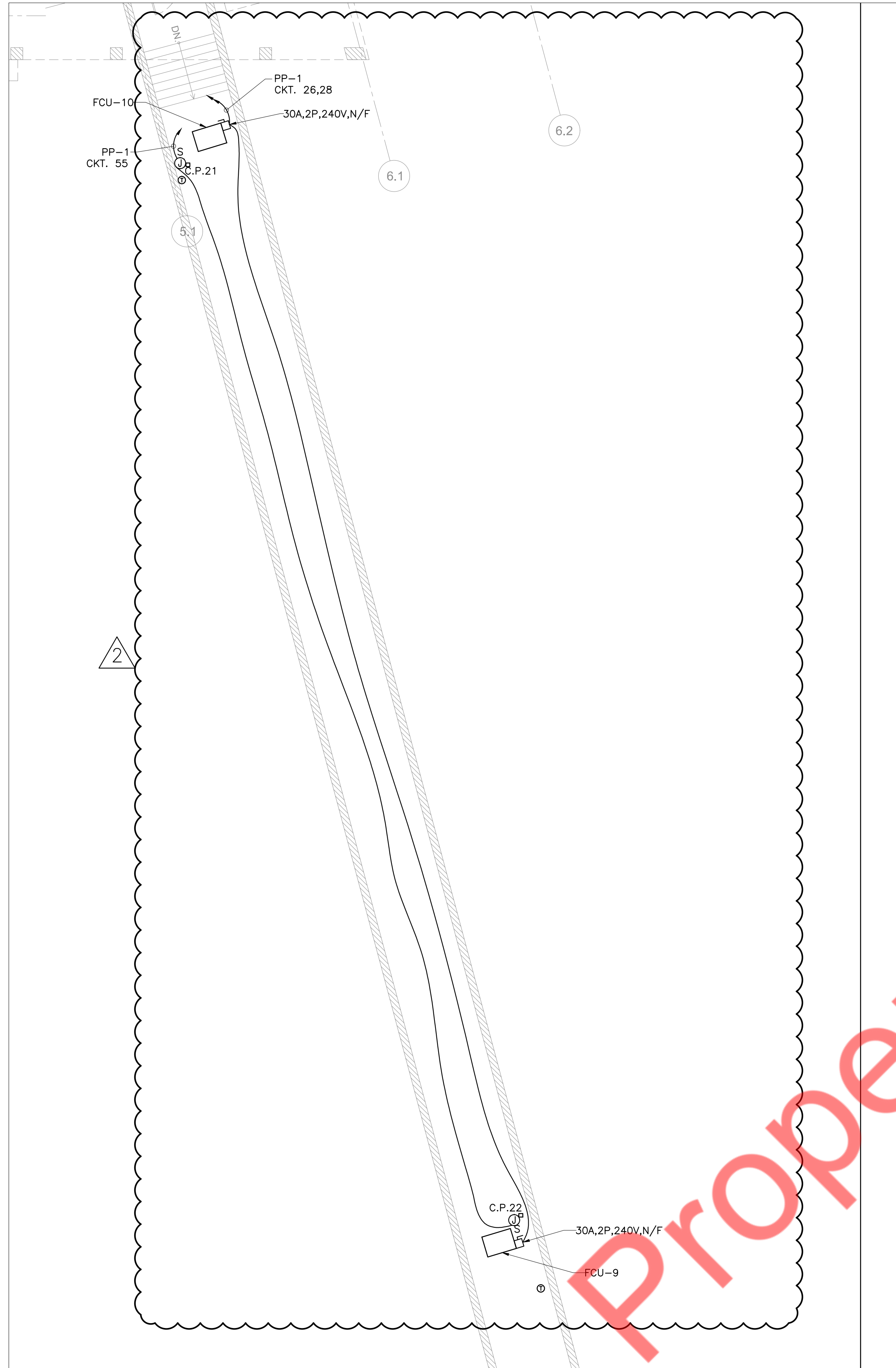


HALLWAY 223 TP & TC-2 LTC;
LP1-103 OTHER LTG: ELP4-99

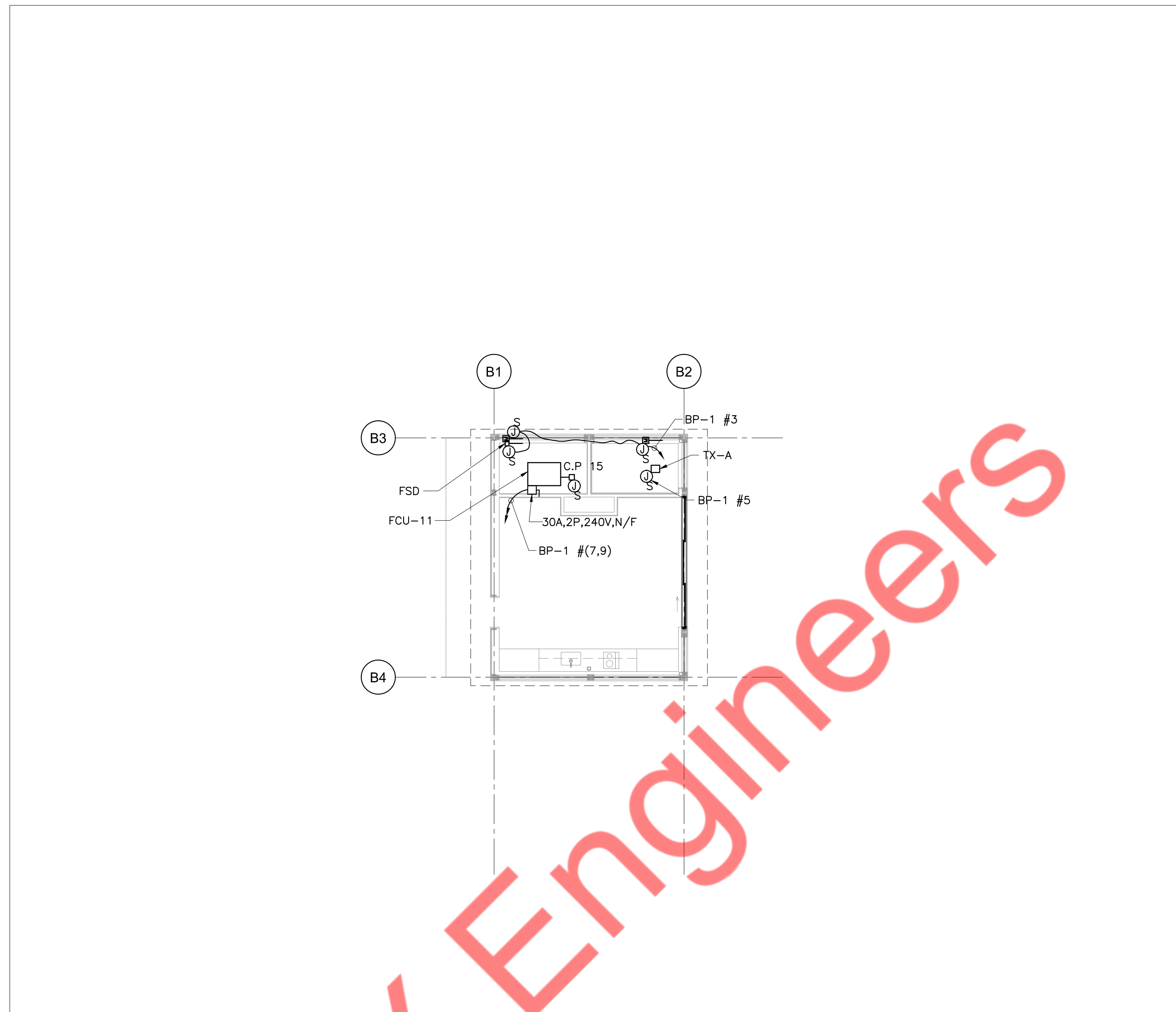
HALLWAYS 202 & 209:
ELP4-103

GENERAL NOTES:

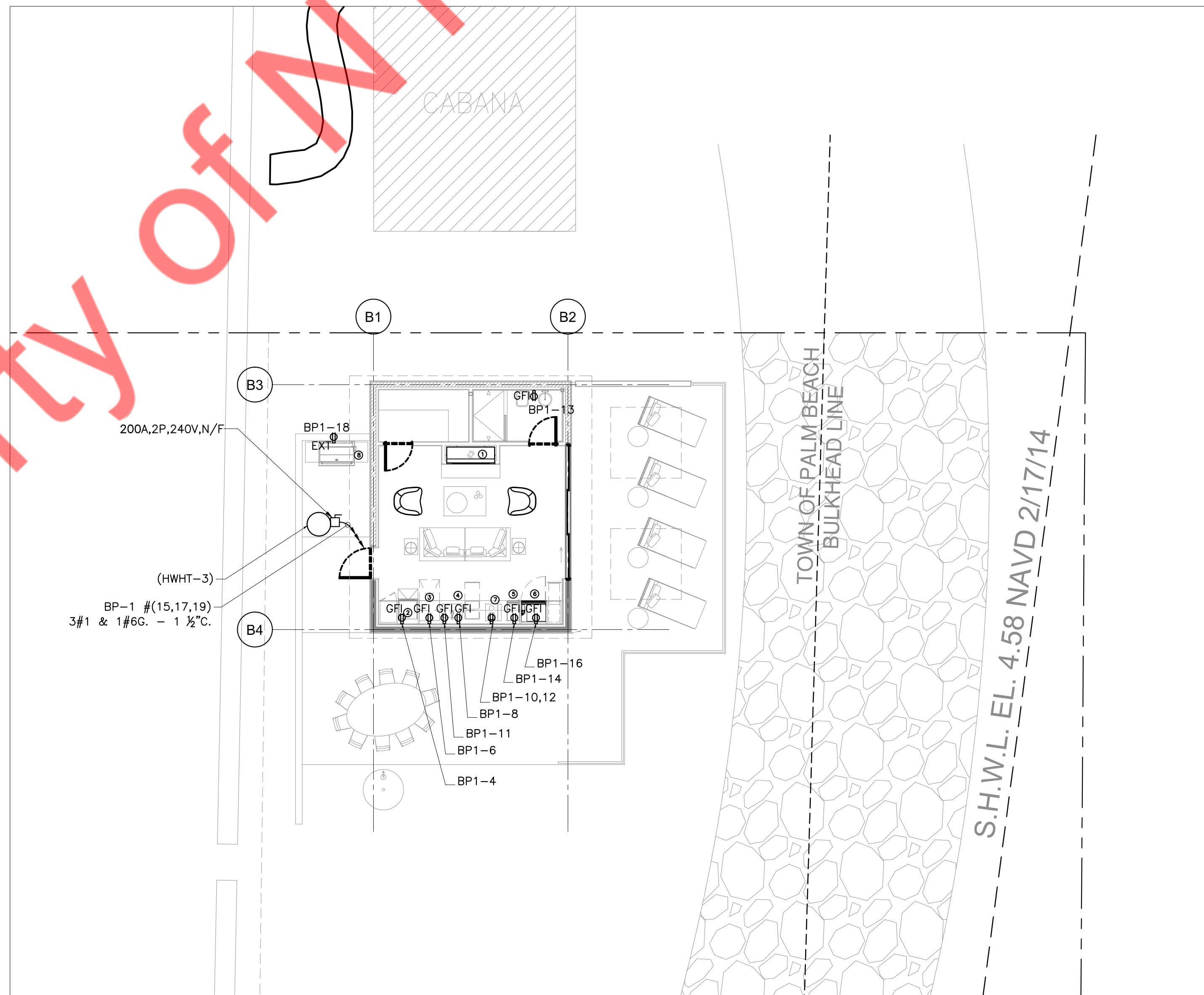
1. ALL CIRCUITS SHOWN ON THE BEACH HOUSE PLAN ARE FED BY 2#12 & 1#12G. IN 3/4" C. U.O.N.
2. ALL CIRCUITS SHOWN ON THE BEACH HOUSE PLAN ARE FED BY PANELBOARD BP-1, U.O.N.
3. COORDINATE EXACT LOCATION OF BEACH HOUSE PANELBOARD WITH GENERAL CONTRACTOR AND ARCHITECT.
4. FOR BEACH HOUSE EQUIPMENT/APPLIANCES CIRCUITING, REFER TO PANEL SCHEDULES BP-1 ON DWG E-602.



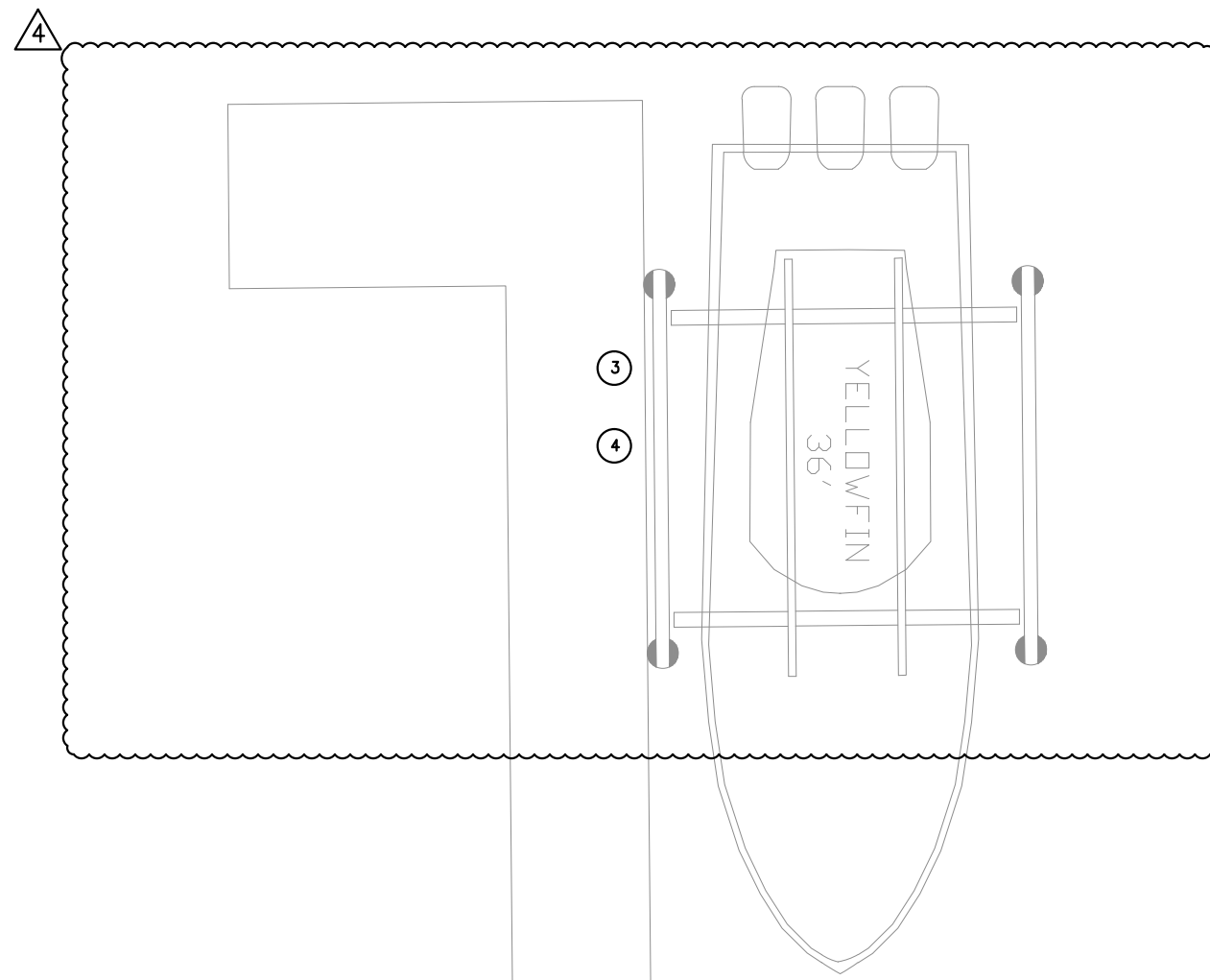
1	TUNNEL
E-112.00	1/8" = 1'-0"



- EQUIPMENT LEGEND:
- 1 GAS FIREPLACE
 - 2 SPEED OVEN
 - 3 DISHWASHER
 - 4 SINK/DISPOSAL
 - 5 ICE MAKER
 - 6 REFRIGERATOR
 - 7 INDUCTION COOKTOP WITH DOWNDRAFT
 - 8 GAS GRILL



1	BEACH HOUSE
E-112.00	1/8" = 1'-0"



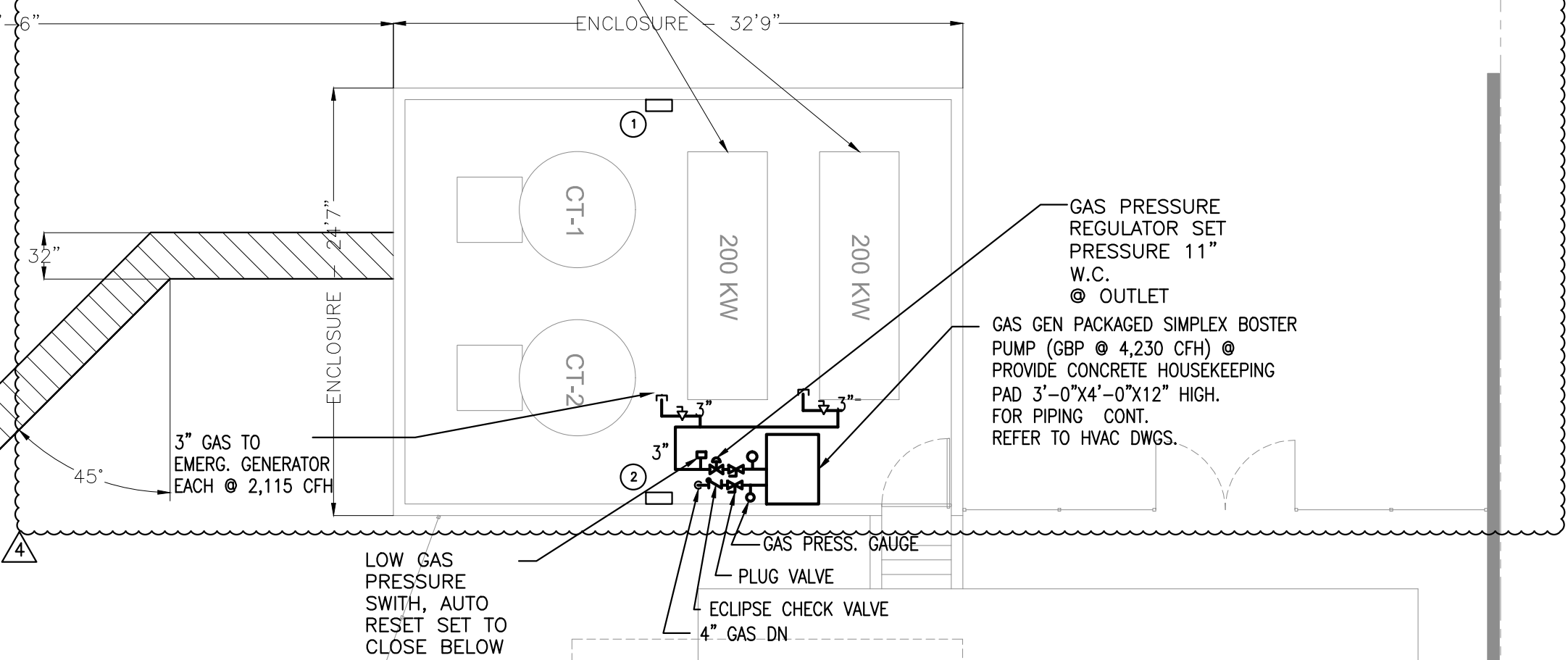
BOAT DOCK
SCALE: 1/8" = 1' - 0

KEYED WORK NOTES

- ① 120/208V, 3PH, 4W (100A, NEMA 3R) NEW GENERATOR ELECTRICAL PANELBOARD (GEP-1) TO BE FURNISHED AND INSTALLED BY ELECTRICAL CONTRACTOR. PANELBOARD TO FEED THE GENERATORS BLOCK HEATER AND THE BATTERY.
- ② KOHLER MCP 3000 MASTER CONTROL PANEL.
- ③ BOAT LIFT. ELECTRICAL CONTRACTOR SHALL FURNISH AND INSTALL POWER TO MAKE THE EQUIPMENT WORKABLE. FEEDER SIZE: 4#4, 1#8G, 1-1/2" C.
- ④ MARINA POWER PEDESTAL. ELECTRICAL CONTRACTOR SHALL FURNISH AND INSTALL POWER TO MAKE THE EQUIPMENT WORKABLE. FEEDER SIZE: 4#4, 1#8G, 1-1/2" C.

CONTRACTOR SHALL PROVIDE NEW 30" W X 18" D TRENCHED CONCRETE DUCT WITH BACKFILL FOR GENERATOR & GAS BOOSTER CONDUIT AND WIRING. COORDINATE ALL WORK WITH STRUCTURAL ENGINEER AND ARCHITECT.

NEW PACKAGED 250KVA EMERGENCY GENERATOR (2) MODEL 200REZ20 - MANUFACTURED BY KOHLER. REFER TO DRAWINGS E-604.00 & E-605.00 FOR SPECIFICATIONS.



LOW GAS PRESSURE SWITCH, AUTO RESET SET TO CLOSE BELOW BOOSTER RATING

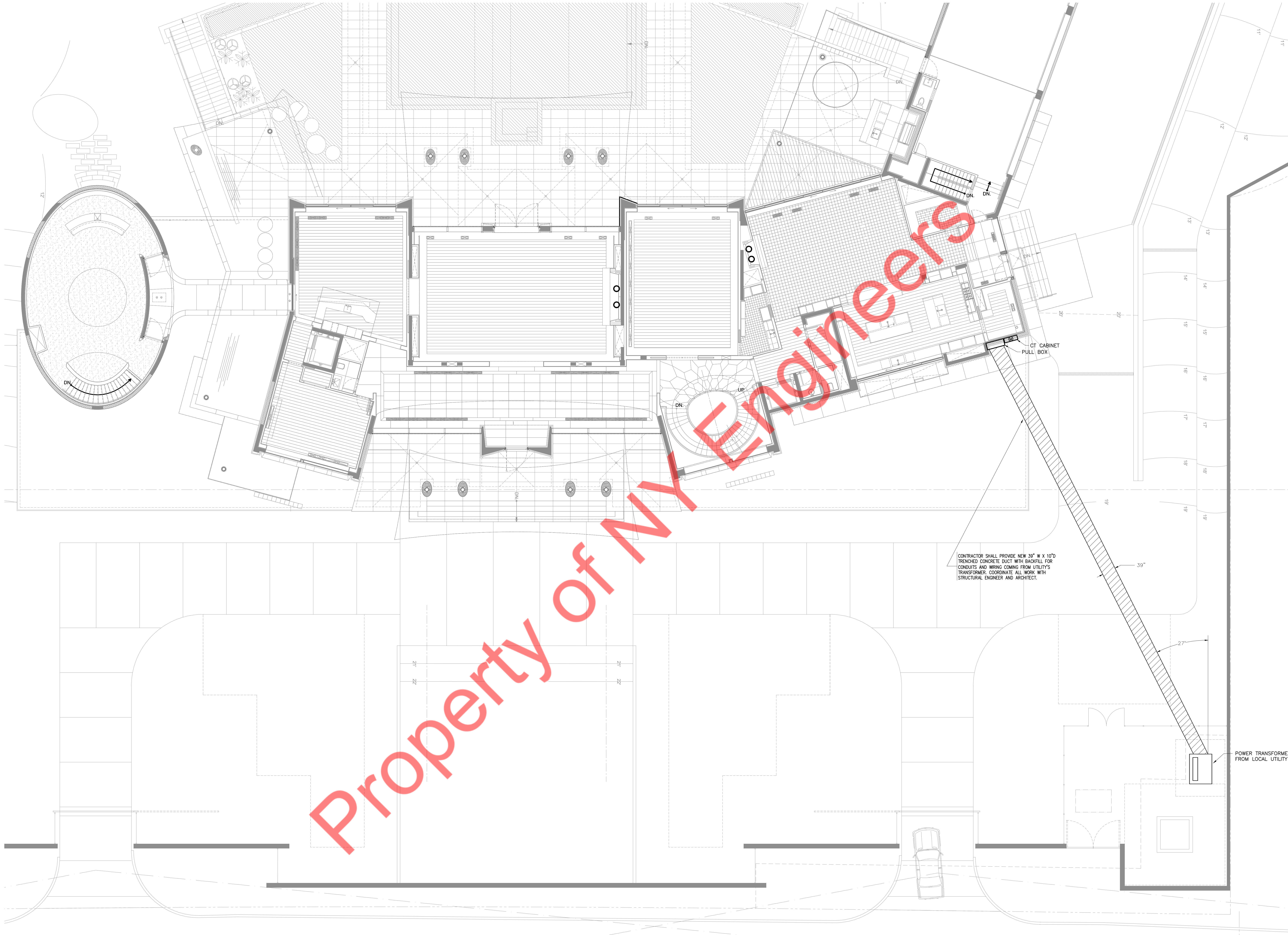
GAS PRESSURE REGULATOR SET PRESSURE 11" W.C. @ OUTLET
GAS GEN PACKAGED SIMPLEX BOOSTER PUMP (GBP @ 4,230 CFH) @ PROVIDE CONCRETE HOUSEKEEPING PAD 3'-0" X 4'-0" X 12" HIGH. FOR PIPING CONT. REFER TO HVAC DWGS.

CONTRACTOR SHALL PROVIDE (4) 4" x (4) 2" SLEEVES THRU FOUNDATION WALL FOR CONDUIT PENETRATIONS. CONTRACTOR SHALL MAKE ALL PENETRATIONS WATER TIGHT AS REQUIRED. COORDINATE ALL WORK WITH STRUCTURAL ENGINEER AND ARCHITECT.

SLEEVES TO PENETRATE FOUNDATION WALL 18" BELOW FIRST FLOOR SLAB

Property of NY Engineers

ELECTRIC POWER TRANSMISSION FROM GENERATOR
SCALE: 1/8" = 1' - 0



CONTRACTOR SHALL PROVIDE NEW 39" W X 10'D TRENCHED CONCRETE DUCT WITH BACKFILL FOR CONDUITS AND WIRING COMING FROM UTILITY'S TRANSFORMER. COORDINATE ALL WORK WITH STRUCTURAL ENGINEER AND ARCHITECT.

POWER TRANSFORMER FROM LOCAL UTILITY

ELECTRIC POWER TRANSMISSION FROM UTILITY TRANFORMER
SCALE: 1/8" = 1' - 0