

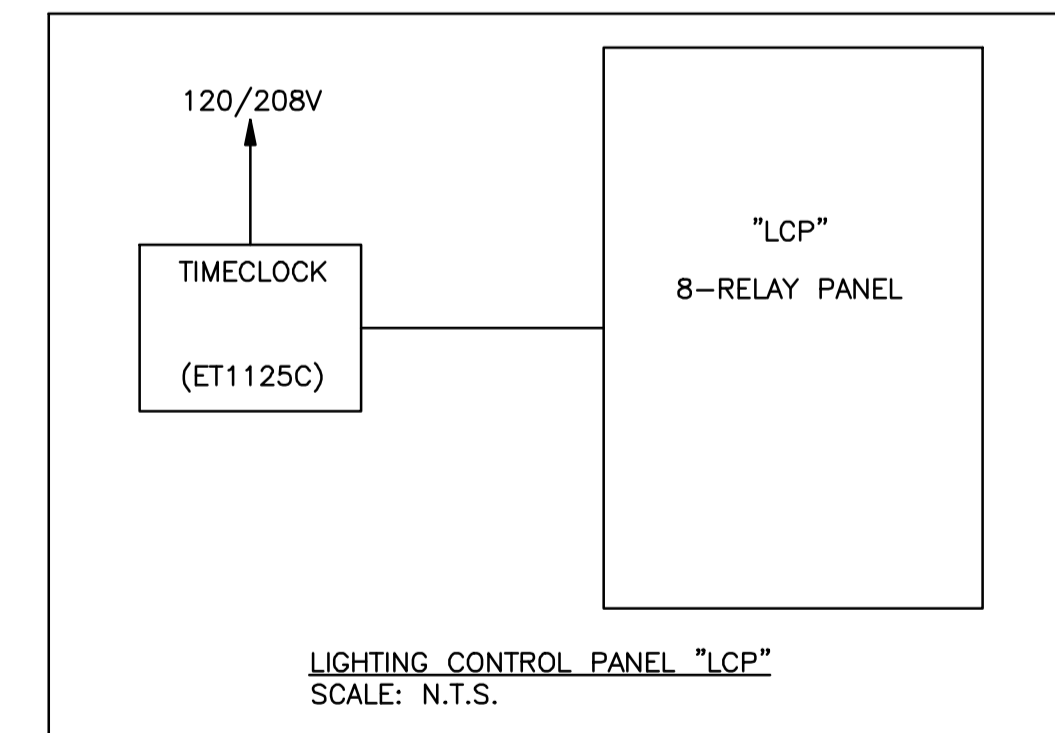
LUMINAIRE SCHEDULE:

Fixture Type	LAMP	WATTAGE	VOLTAGE	DESCRIPTION	CATALOG NUMBER	REMARK
A	LED/3000K/675LM /80CRI	10 PER HEAD	120	FIXTURE: 2'-0" TRACK W/ (2) FIXTURES (HEAD)	JUNO LIGHTING, TRACK: #R2BL HEAD: #R600L-3-K-N-BL CURRENT LIMITER: #RCLFM11BL	
B	LED	10	120	FIXTURE: 16" ROUND PENDANT W/ 15'-0" CORD (BLACK)	HI-LITE MANUFACTURING LIGHTING #H16116-101/CB15-91/GU24/10W	E.C. TP PROVIDE (1) LED LAMP RATED AT 10W OR LESS WITH GU24 BASE. MANUFACTURER TO LABEL FIXTURE WITH 10W MAXIMUM LABEL.
C	LED/3500K/4800LM /85CRI	43.7	120	FIXTURE: 2'x4' TROFFER W/ ACRYLIC LENS	METALUX #24GR-LD4-48-F1-UNV-L835-C D-1-U	
CA	LED/3500K/5500LM /85CRI	50	120	FIXTURE: 2'x4' TROFFER W/ ACRYLIC LENS	METALUX #24CZ-LD4-55-F1-UNV-L830-C D1-U	
D	LED	10	120	FIXTURE: 4" ROUND RECESSED CAN LIGHT SUPPLIER MELETIO ELECTRICAL SUPPLY	HALO LIGHTING HOUSING: #H750ICAT MODULE: #LT560WH6930	
DA	LED	10	120	FIXTURE: 6" ROUND RECESSED CAN LIGHT SUPPLIER MELETIO ELECTRICAL SUPPLY	HALO LIGHTING HOUSING: #H750ICAT MODULE: #LT560WH6930	
DB	LED	10	120	FIXTURE: 6" ROUND RECESSED CAN LIGHT SUPPLIER MELETIO ELECTRICAL SUPPLY	HALO LIGHTING HOUSING: #H750ICAT MODULE: #LT560WH6930	IN BLACK TRIM
F	LED/3000K/675LM /80CRI	10 PER HEAD	120	FIXTURE: LED STRIPE LIGHT	JUNO LIGHTING TRACK: #R6WH HEAD: #R600L-3-K-N-WH CURRENT LIMITER: #RCLFM11BL	
EM	LED		120	LED EMERGENCY EGRESS FIXTURE WITH 3.6V NICKEL-CADMIUM BACKUP BATTERY, WHITE FINISH, AND (2) HEADS.	SURE-LITE #CU2-LED	
EX	LED		120	LED EMERGENCY EGRESS EXIT SIGN FIXTURE WITH 3.6V NICKEL-CADMIUM BACKUP BATTERY, WHITE FINISH, RED LETTERS, REMOTE CAPABILITIES, AND (2) HEADS.	SURE-LITE #APCH7-R	
E	LED		120	EXIST		

LUMINAIRE SCHEDULE GENERAL NOTES:

- VERIFY ALL LUMINAIRE COLORS, TRIMS, LENGTHS, ETC. WITH THE ARCHITECT PRIOR TO PLACING FINAL PURCHASE ORDERS. SUBMISSION PF SHOP DRAWINGS WILL BE INTERPRETED AS HAVING BEEN COORDINATED WITH THE ARCHITECTURAL DRAWINGS .
- PROVIDE ALL LENGTHS, FEEDS, ACCESSORIES, CONNECTORS, WIRING, POWER SUPPLIES, DRIVERS ETC. FOR A COMPLETE INSTALLATION. THE E.C. SHALL VERIFY THE COMPLETE BILL OF MATERIAL WITH MANUFACTURER'S REPRESENTATIVE AND ENSURE ALL EQUIPMENT ARE INCLUDED IN BID PRICE. COORDINATE INSTALLATION WITH ARCHITECTURAL DETAILS.
- VERIFY FINAL LUMINAIRE LOCATIONS WITH OTHER CEILING MOUNTED EQUIPMENTS SUCH AS DIFFUSER WITH ARCHITECTURAL REFLECTED CEILING PLANS.
- VERIFY EXACT MOUNTING HEIGHT AND LOCATIONS OF ALL WALL MOUNTED LUMINAIRE WITH ARCHITECTURAL PLANS AND ELEVATIONS PRIOR TO ROUGH-IN
- ANY PROPOSED ALTERNATE LUMINAIRES SHALL BE APPROVED BY THE ARCHITECT PRIOR TO FINAL BID PRICING.
- SHOULD THE CONTRACTOR PROPOSE TO FURNISH MATERIALS, EQUIPMENT AND DEVICES OTHER THAN THOSE SPECIFIED AND LISTED, THE CONTRACTOR SHALL SUBMIT A WRITTEN REQUEST FOR SUBSTITUTIONS, TO THE ENGINEERS AT LEAST TEN (10) BUSINESS DAYS PRIOR TO BID OPENING. THE REQUEST SHALL BE AN ALTERNATE TO THE ORIGINAL BID AND SHALL INCLUDE A COMPLETE SPECIFICATIONS CUTSHEET SUBMITAL AS OUTLINED IN THE SPECIFICATIONS, COMPLETE WITH DESCRIPTIVE (MANUFACTURER, BRAND NAME, CATALOG NUMBER, ETC.) AND TECHNICAL DATA FOR ALL ITEMS. INDICATE ANY ADDITIONS OR DEDUCTIONS TO THE CONTRACT PRICE WITH THE SUBSTITUTION SUBMITAL AND ON THE BID FORM.

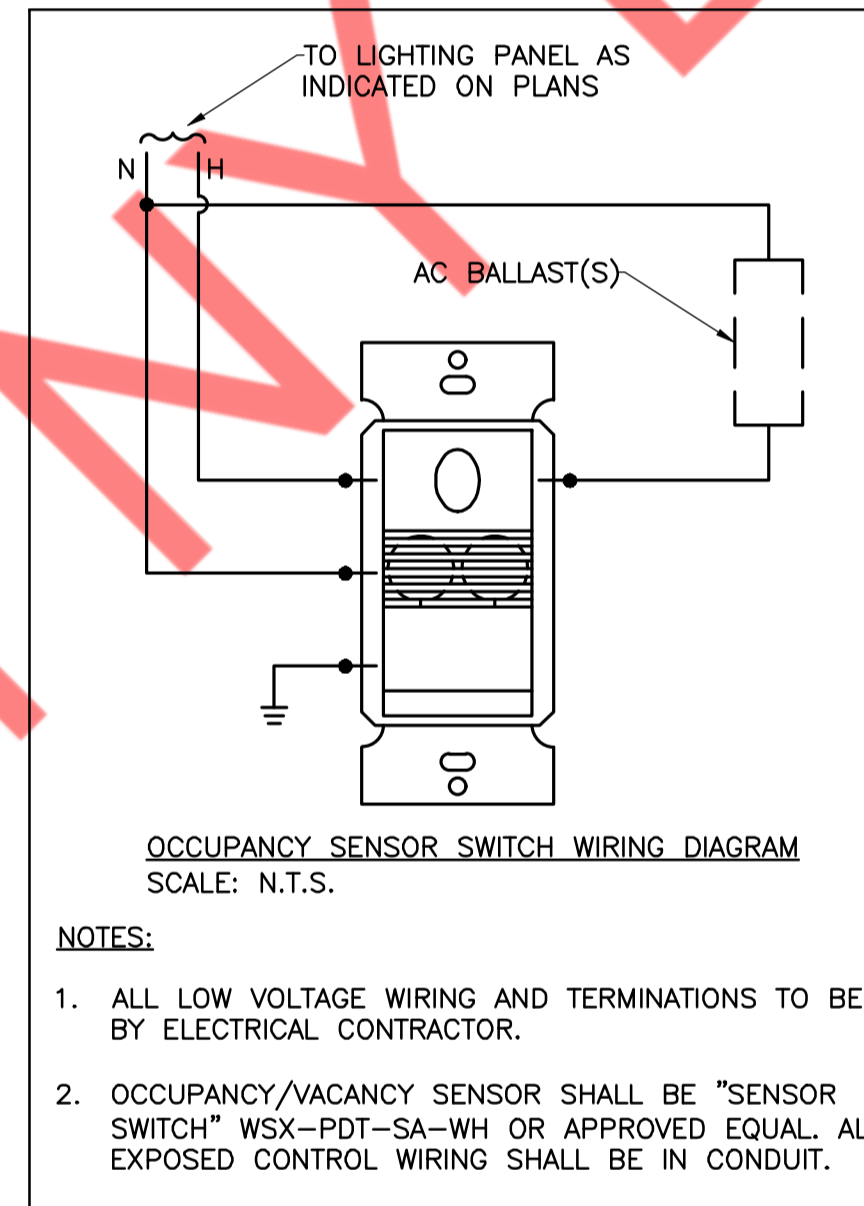
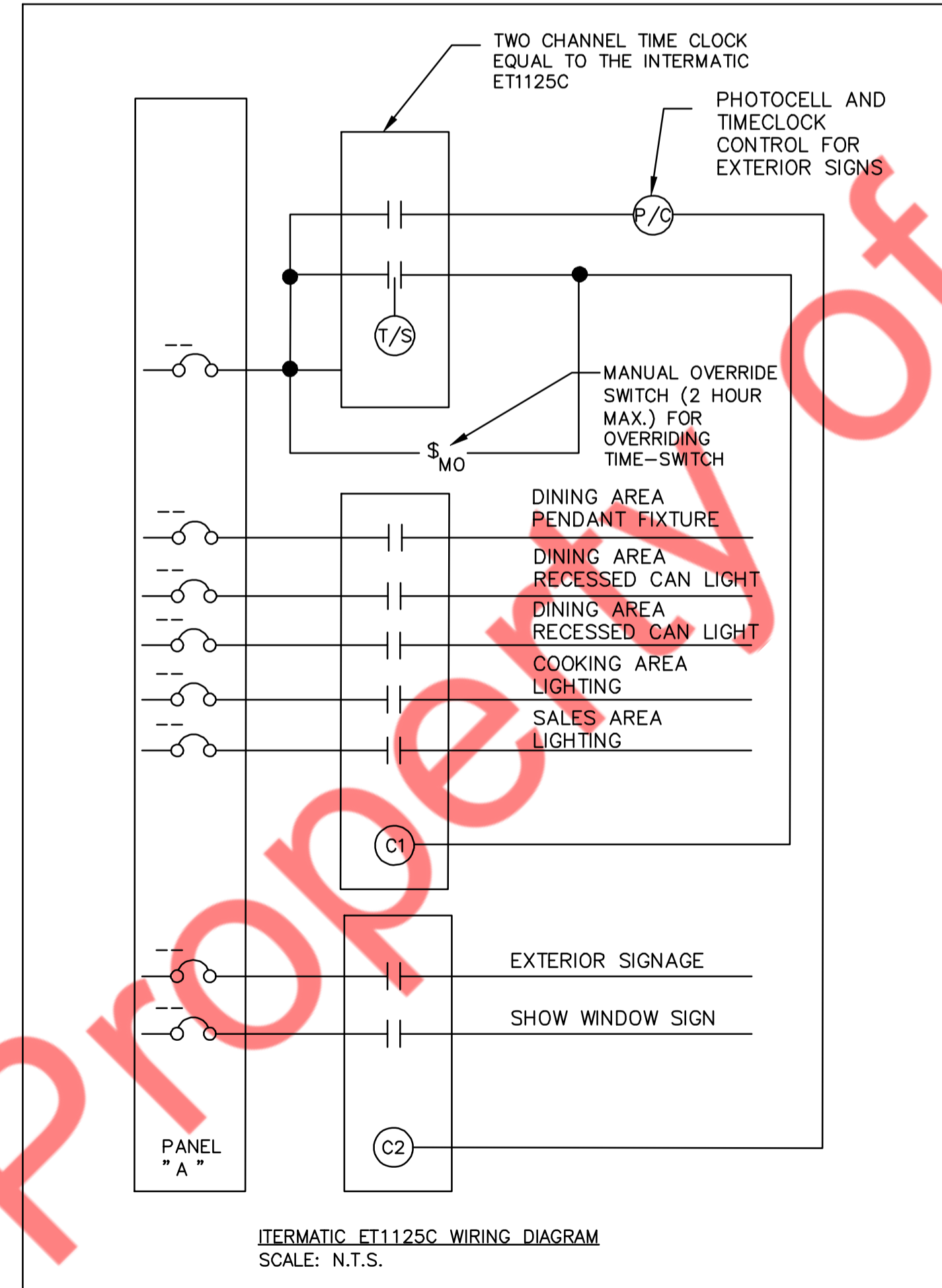
'LCP' SCHEDULE				
RELAY #	ZONE TAG	CONTROL TYPE	CIRCUIT #	DESCRIPTION
1	a	TIMER	A#1	DINING AREA LIGHTING
2	b	TIMER	A#1	ORDER AREA LIGHTING
3	c	TIMER	A#3	SALES AREA LIGHTING
4	d	TIMER	A#3	COOKING AREA LIGHTING
5	e	TIMER	A#5	EXTERIOR SIGNAGE
6	f	TIMER	A#7	SHOW WINDOW RECEPTACLE
7	g	TIMER	A#40	OPEN TILL MIDNIGHT SIGN



INTERMATIC ET1125C 24-HOUR ELECTRONIC TIME SWITCH:

NOTES:

- INTERMATIC TIMER BOX SHALL BE LOCATED AS CLOSE TO PANELBOARD AS PRACTICAL. PROVIDE WIRING FROM LOW VOLTAGE SWITCH TO RELAY CABINET REQUIRED FOR EACH RELAY AS REQUIRED.
- PROGRAM LIGHTING SCHEDULE AND HOURS OF OPERATION WITH OWNER.
- PROVIDE LOW VOLTAGE OVERRIDE SWITCH AS INDICATED ON DRAWINGS INTERMATIC ET1125C SERIES. LOW-VOLTAGE OVERRIDE SWITCH CONTROLS SHALL INITIATE AN OVERRIDE OF A MAXIMUM TIME OF NO MORE THAN TWO (2) HOURS.
- PROVIDE TWO (2) HOUR TRAINING ON PROGRAMMING OF SYSTEM & SYSTEM OPERATION.
- SYSTEM SHALL BE TESTED AND COMMISSIONED IN ACCORDANCE WITH ASHRAE 90.1-2010 REQUIREMENTS AS NOTED IN PARAGRAPH 9.4.4 - FUNCTIONAL TESTING.

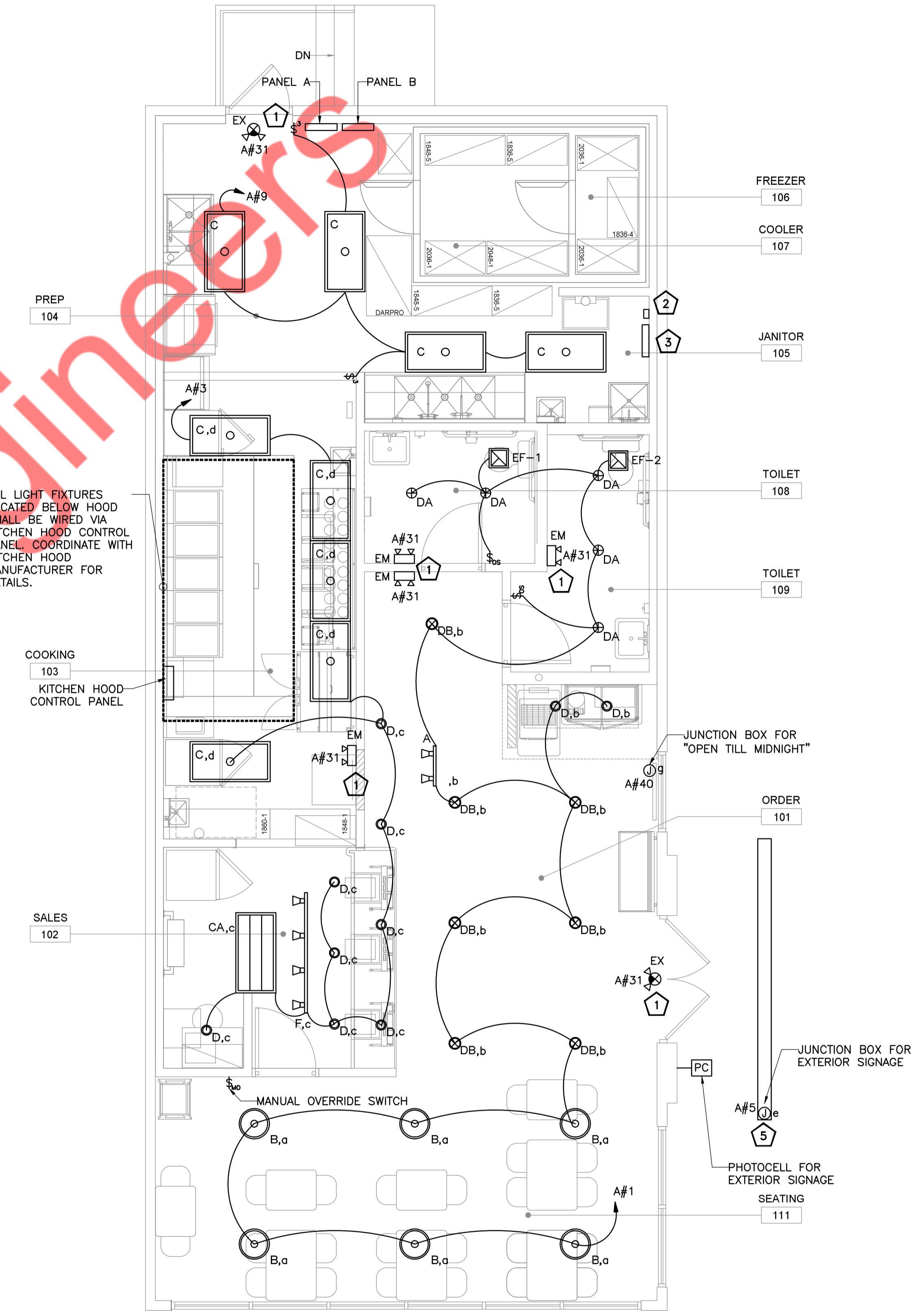


NOTES:

- ALL LOW VOLTAGE WIRING AND TERMINATIONS TO BE BY ELECTRICAL CONTRACTOR.
- OCCUPANCY/VACANCY SENSOR SHALL BE "SENSOR SWITCH" WSX-PDT-SA-WH OR APPROVED EQUAL. ALL EXPOSED CONTROL WIRING SHALL BE IN CONDUIT.

ELECTRICAL LIGHTING PLAN KEYED WORK NOTES:

- CONNECT ALL EMERGENCY EGRESS AND NIGHT LIGHTING FIXTURES TO NEAREST LIGHTING BRANCH CIRCUIT AHEAD OF ALL SWITCHING AND CONTROLS PER STATE AND LOCAL CODES. EXIT SIGNS SHALL NOT EXCEED 5 WATTS PER FACE.
- LOCATION OF ET1125C SERIES 24-HOUR ELECTRONIC TIME SWITCH (3.1"x5.3"x8"). SEE SCHEDULE ON THIS DRAWING FOR ADDITIONAL INFORMATION. CONNECT TO P.O.S. RECEPTACLE BRANCH CIRCUIT. (PANEL A, CKT#12). COORDINATE LOCATION OF LCP PANEL WITH ARCHITECT/OWNER.
- LOCATION OF LIGHTING CONTROL PANEL 'LCP'. SEE SCHEDULE ON THIS DRAWING FOR ADDITIONAL INFORMATION. CONNECT TO P.O.S. RECEPTACLE BRANCH CIRCUIT. (PANEL A, CKT#12). COORDINATE LOCATION OF LCP PANEL WITH ARCHITECT/OWNER.
- ALL COOLER FREEZER LIGHTING FIXTURES AND RELATED LOCAL CONTROLS SHALL BE PROVIDED BY EQUIPMENT SUPPLIER. E.C. SHALL MAKE ALL FINAL CONNECTION TO FIXTURES AS REQUIRED TO ENSURE A COMPLETE OPERATION. CONNECT FIXTURES TO NEAREST 120V LIGHTING CIRCUIT.
- PROVIDE JUNCTION BOX FOR SERVICE TO STOREFRONT SIGNAGE. MOUNT JUNCTION BOX ABOVE STOREFRONT WINDOW, WITHIN 18" OF TOP OF STOREFRONT WINDOW. JUNCTION BOX SHALL BE CONTROLLED THROUGH LIGHTING CONTROL PANEL "LCP" RELAY 'e'.



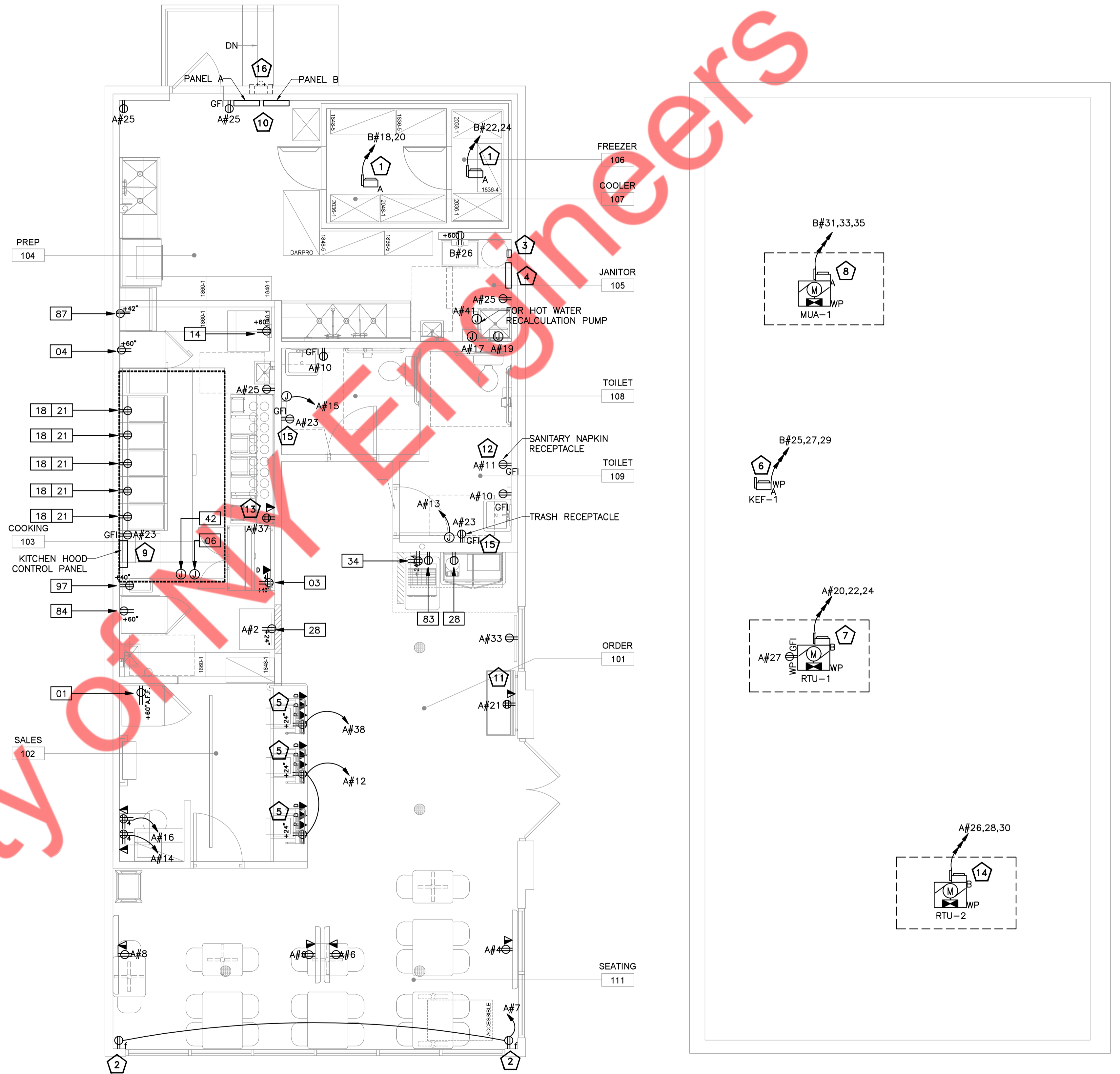
1 LIGHTING PLAN
SCALE: 1/4" = 1'-0"

ELECTRICAL POWER PLAN KEYED WORK NOTES:

- 1 COOLER/FREEZER CONDENSER (1.15/1.05KW-208V-1PH): PROVIDE A 30A-2P UNFUSED DISCONNECT SWITCH MOUNTED ON/AT UNIT AS REQUIRED. COORDINATE FINAL LOCATION IN FIELD. WIRING SHALL BE 2#12(G), 3/4"C. TO THE 20A-2P CIRCUIT BREAKER INDICATED ON DRAWING.
- 2 PROVIDE AND MOUNT DUPLEX RECEPTACLE FOR SHOW WINDOW LIGHTING ABOVE STOREFRONT WINDOW WITHIN 18" OF TOP OF THE STORE FRONT WINDOW. RECEPTACLES SHALL BE CONTROLLED THROUGH LIGHTING CONTROL PANEL "LCP" RELAY 'f'.
- 3 LOCATION OF ET1125C SERIES 24-HOUR ELECTRONIC TIME SWITCH (3.1"X5.3"X8"). SEE SCHEDULE ON THIS DRAWING FOR ADDITIONAL INFORMATION. COORDINATE LOCATION OF LCP PANEL WITH ARCHITECT/OWNER.
- 4 LOCATION OF LIGHTING CONTROL PANEL 'LCP'. SEE SCHEDULE ON THIS DRAWING FOR ADDITIONAL INFORMATION. CONNECT TO P.O.S. RECEPTACLE BRANCH CIRCUIT. (PANEL A, CKT#12). COORDINATE LOCATION OF LCP PANEL WITH ARCHITECT/OWNER.
- 5 COORDINATE MOUNTING AND EXACT LOCATION OF DEVICES IN P.O.S. CABINETS WITH G.C. EACH P.O.S. STATION SHALL BE (1) DOUBLE DUPLEX RECEPTACLE, (2) DATA OUTLETS, AND (1) VOICE OUTLET. COORDINATE ALL REQUIREMENTS WITH FRANCHISEE/ARCHITECT.
- 6 KITCHEN EXHAUST FAN (7.6 MCA-208V-3 PH): PROVIDE A 30A-3P UNFUSED DISCONNECT SWITCH MOUNTED ON/AT UNIT AS REQUIRED. COORDINATE FINAL LOCATION IN FIELD. WIRING SHALL BE 3#12 (G), 3/4"C. TO THE 15A-3P CIRCUIT BREAKER INDICATED ON DRAWING. THE FAN SHALL BE WIRED VIA KITCHEN HOOD CONTROL PANEL. PROVIDE DEDICATED CONDUIT FOR THE KITCHEN EXHAUST FAN. COORDINATE WITH KITCHEN HOOD MANUFACTURER FOR DETAILS. DISCONNECT SWITCH SHALL BE FACTORY PROVIDED AND INSTALLED.
- 7 ROOFTOP UNITS RTU-1 (43MCA-208V-3 PH): PROVIDE A 50A-3P UNFUSED DISCONNECT SWITCH MOUNTED ON/AT UNIT AS REQUIRED. COORDINATE FINAL LOCATION IN FIELD. WIRING SHALL BE 3#8, 1#10 (G), 3/4"C. TO THE 50A-3P CIRCUIT BREAKER INDICATED ON DRAWING.
- 8 KITCHEN MAKE-UP AIR UNIT (7.12 MCA-208V-3 PH): PROVIDE A 30A-3P UNFUSED DISCONNECT SWITCH MOUNTED ON/AT UNIT AS REQUIRED. COORDINATE FINAL LOCATION ON FIELD. WIRING SHALL BE 3#12 (G), 3/4"C. TO THE 15A-3P CIRCUIT BREAKER AS INDICATED ON DRAWING. THE UNIT SHALL BE WIRED VIA KITCHEN HOOD CONTROL PANEL. PROVIDE DEDICATED CONDUIT FOR THE MAKE-UP AIR UNIT. DISCONNECT SWITCH SHALL BE FACTORY PROVIDED AND INSTALLED. COORDINATE WITH KITCHEN HOOD MANUFACTURER FOR DETAILS.
- 9 COORDINATE EXACT LOCATION & DETAILS OF KITCHEN HOOD CONTROL PANEL WITH KITCHEN HOOD MANUFACTURER
- 10 PROVIDE STAINLESS STEEL COVER FOR THE PANEL 'A', PANEL 'B' & LCP PANEL.
- 11 PROVIDE RECEPTACLE AND DATA FOR CRADLE POINT. COORDINATE EXACT LOCATION WITH ARCHITECT PRIOR TO ROUGH-IN.
- 12 GFCI RECEPTACLE FOR SANITARY NAPKIN. COORDINATE EXACT LOCATION WITH ARCHITECT/OWNER.
- 13 RECEPTACLE FOR KITCHEN PRINTER. COORDINATE EXACT LOCATION WITH ARCHITECT/OWNER.
- 14 ROOFTOP UNITS RTU-2 (35MCA-208V-3 PH): PROVIDE A 50A-3P UNFUSED DISCONNECT SWITCH MOUNTED ON/AT UNIT AS REQUIRED. COORDINATE FINAL LOCATION IN FIELD. WIRING SHALL BE 3#8, 1#10 (G), 3/4"C. TO THE 40A-3P CIRCUIT BREAKER INDICATED ON DRAWING.
- 15 GFCI RECEPTACLE FOR TRASH. COORDINATE EXACT LOCATION WITH ARCHITECT/OWNER.
- 16 EXISTING 200 AMPS, 3-PHASE, 120/208V DISCONNECT SWITCH AND METER PROVIDED BY LANDLORD/PSE&G. E.C. TO VERIFY EXACT LOCATION & SPECIFICATIONS.

GENERAL POWER PLAN NOTES:

1. EXACT LOCATION OF MECHANICAL, PLUMBING, KITCHEN, FURNITURE SYSTEMS, OWNER FURNISHED EQUIPMENT ETC. THAT REQUIRE ELECTRICAL CONNECTIONS ARE SHOWN ON THE MECHANICAL, PLUMBING, AND/OR ARCHITECTURAL DRAWINGS. COORDINATE EXACT LOCATIONS WITH RESPECTIVE CONTRACTORS AND/OR VENDORS PRIOR TO ANY ROUGH-INS.
2. REVIEW AND COORDINATE WITH ALL TRADES CONTRACT DOCUMENTS TO DETERMINE SPECIFIC MOUNTING LOCATIONS FOR EQUIPMENT WITH ELECTRICAL CONNECTIONS. COORDINATE EXACT MOUNTING LOCATIONS WITH THE SPECIFIC TRADE AND ARCHITECT.
3. MINIMUM CONDUCTOR SIZE FOR 120V BRANCH CIRCUITS SHALL BE 12-AWG. FOR 120V BRANCH CIRCUITS WITH HOMERUN OVER 100 LINEAR FEET, A MINIMUM WIRE SIZE OF 10-AWG SHALL BE PROVIDED FROM FIRST JUNCTION/OUTLET BOX TO BRANCH CIRCUIT PANELBOARD. FOR 120V BRANCH CIRCUITS WITH HOMERUN OVER 150 LINEAR FEET, A MINIMUM OF 8-AWG SHALL BE PROVIDED FROM FIRST JUNCTION/OUTLET BOX TO BRANCH CIRCUIT PANELBOARD.
4. ALL WIRINGS SHALL BE IDENTIFIED BY PANELBOARD AND CIRCUIT NUMBERS IN ALL CABINETS, JUNCTION BOXES, WIRING TROUGHS, ENCLOSURES, SPLICE OR TERMINATION POINTS, ETC.
5. A NEW TYPED PANELBOARD DIRECTORY CARD SHALL BE PROVIDED FOR ALL PANELS INSTALLED OR MODIFIED UNDER THIS CONTRACT. NEW DIRECTORY CARDS SHALL BE LOCATED ON THE INSIDE DOOR OF ASSOCIATED PANELS.



1 POWER PLAN
SCALE: 1/4" = 1'-0"

2 PROPOSED ROOF POWER PLAN
SCALE: 1/4" = 1'-0"