

ITEM NO.	QTY.	EQUIPMENT CATEGORY	GAS SIZE(IN)	MBH	COLD WATER SIZE(IN)	HOT WATER SIZE(IN)	INDIRECT DRAIN SIZE(IN)	DIRECT DRAIN SIZE(IN)	REMARKS
7	1	3-COMPARTMENT SINK	-	-	3/4"	3/4"	2"	-	-
8	1	MOP SINK	-	-	3/4"	3/4"	-	3"	-
12	3	HAND SINK	-	-	1/2"	1/2"	-	1-1/2"	-
14,83	1	ICE MACHINE	-	-	1/2"	-	3/4"	-	CW FILTERED & BFP
15	2	TANKLESS WATER HEATER	3/4"	250	3/4"	3/4"	-	-	-
18	5	SOLSTICE SUPREME GAS FRYER	1-1/4"	105	-	-	-	-	-
28	1	TEA DISPENSER	-	-	1/2"	-	2"	-	CW FILTERED & BFP
34	1	FREE STYLE DISPENSER(SODA)	-	-	1/2"	-	3"	-	CW FILTERED & BFP
35	1	CARBONATOR	-	-	1/2"	-	2"	-	CW FILTERED & BFP
77	1	2-COMPARTMENT SINK	-	-	3/4"	3/4"	2"	-	-

SEE KITCHEN EQUIPMENT PLAN FOR ADDITIONAL INFO

GREASE INTERCEPTOR CALCULATIONS

Reviewed by: Tye
Project Name: WingStop

Reference No. 14995
Step 1: Flow rate to grease interceptor
Fixture flow rate: (cu in / 231) = gal x 0.75 / 2 min = 2 min flow rate

NAME	TYPE	DIMENSIONS	QTY	CU IN FLOW RATE
3-Comp Sink	3 Compartment Sink	25" x 18" x 15" (3)	1	20,250
2-Comp Sink	2 Compartment Sink	25" x 18" x 15" (2)	1	13,500
Floor Drain	Floor Drain	N/A	2	N/A

Total: 54.78 GPM

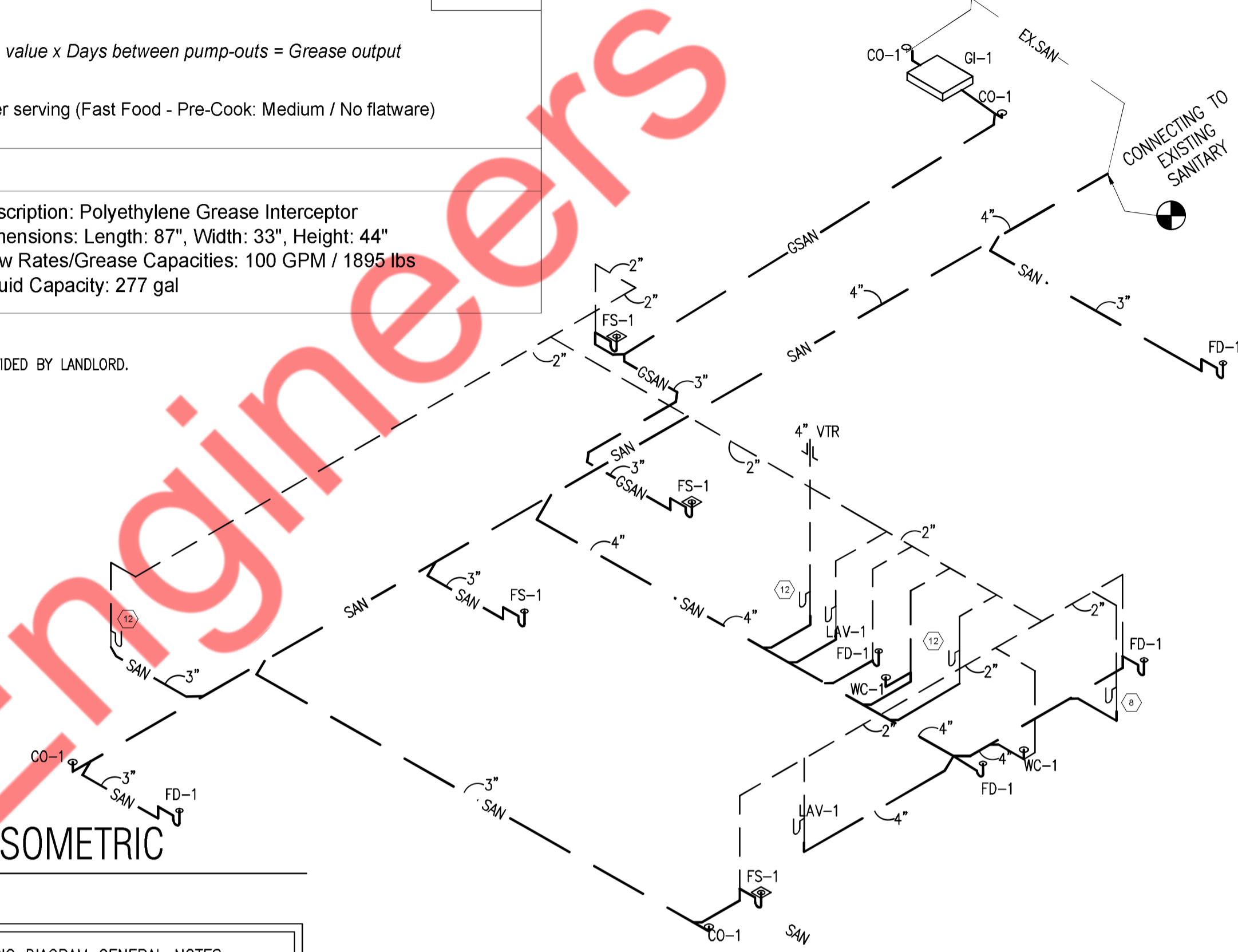
Step 2: Grease Production
Servings per day x Grease production value x Days between pump-outs = Grease output
Number of meals served per day: 400
Grease production value: 0.025 lbs per serving (Fast Food - Pre-Cook: Medium / No flatware)
Days between pump-outs: 60 days
400 x 0.025 x 60 = 600 lbs of FOG

SCHIER MODEL Description: Polyethylene Grease Interceptor
Dimensions: Length: 87", Width: 33", Height: 44"
Flow Rates/Grease Capacities: 100 GPM / 1895 lbs
Liquid Capacity: 277 gal

NOTES:
1. EXISTING GREASE INTERCEPTOR PROVIDED BY LANDLORD.

GAS LOAD SUMMARY

EQUIPMENT TAG	CFH LOAD
RTU-1	180
RTU-2	125
MUA-1	145
15-TANKLESS WATER HEATER(X2)	400
18-SOLSTICE SUPREME GAS FRYER(X5)	525
TOTAL LOAD	1375

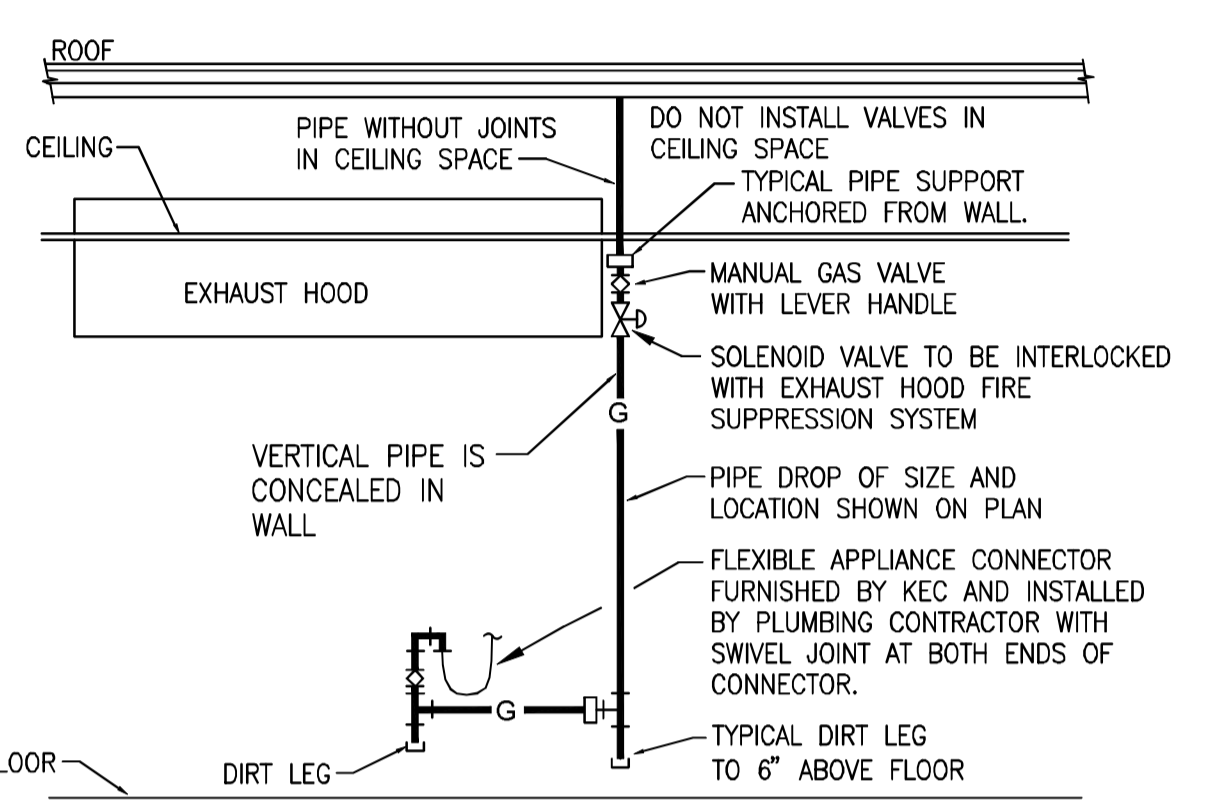


SANITARY ISOMETRIC

NOT TO SCALE

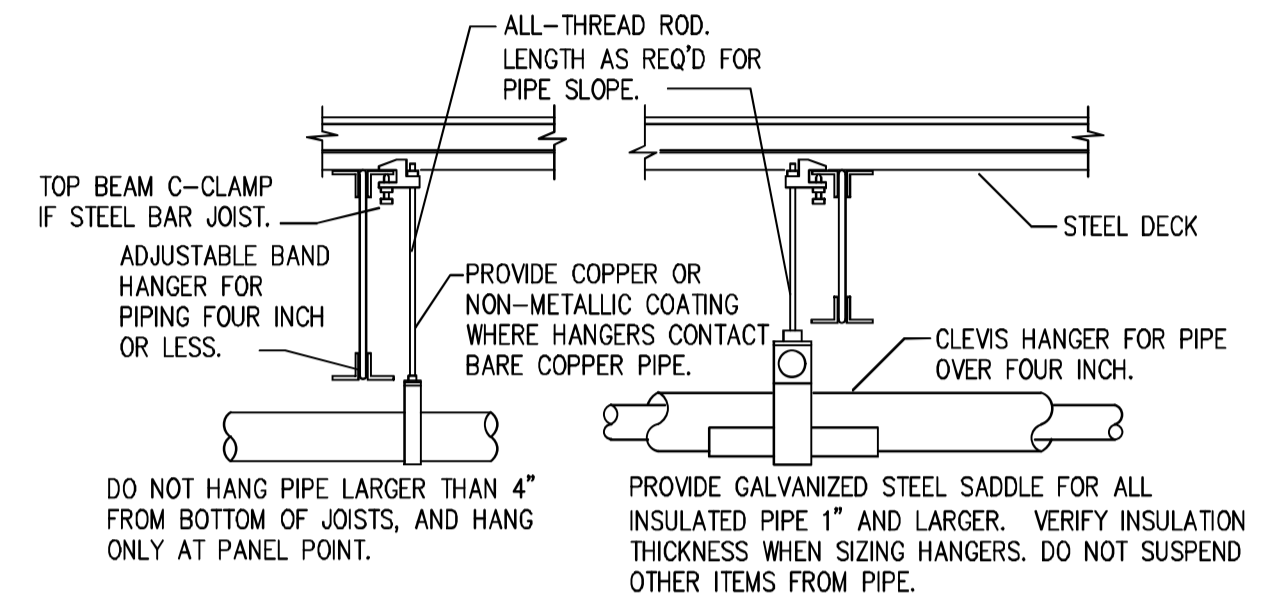
SANITARY ISOMETRIC DIAGRAM GENERAL NOTES

- ALL SANITARY PIPING TO BE 3" DIAMETER UNLESS STATED OTHERWISE.
- ALL VENT PIPING TO BE 1-1/2" DIAMETER UNLESS STATED OTHERWISE.
- CONNECT SANITARY & VENT PIPING TO EXISTING PIPING IN AREA. FIELD VERIFY EXACT TIE-IN LOCATIONS.



COOKING APPLIANCE GAS PIPE DETAIL

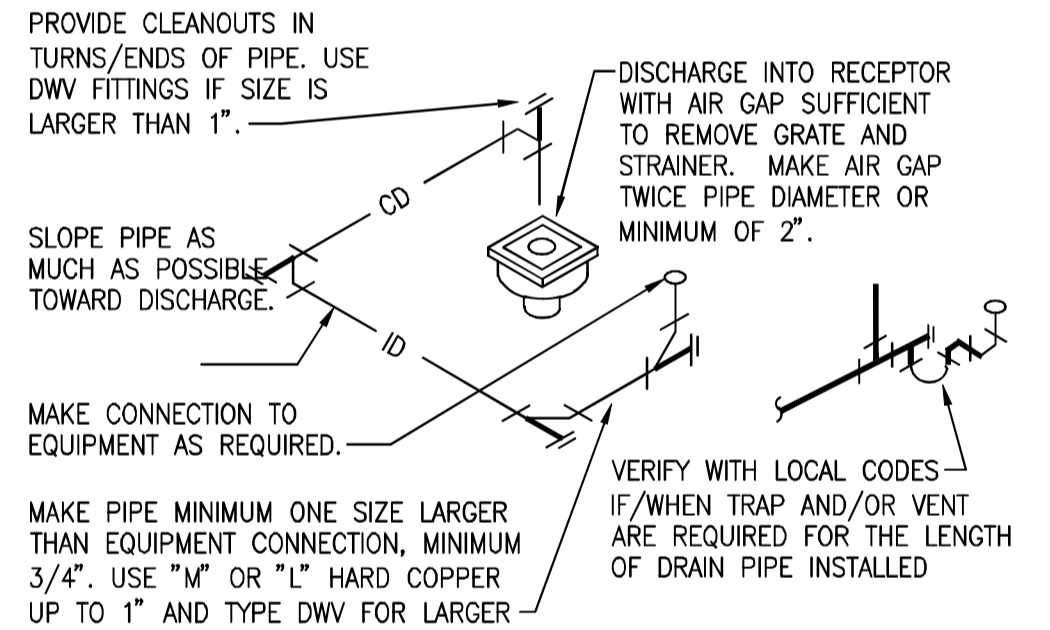
NOT TO SCALE



COMMENTS:
1. PROVIDE UPPER ATTACHMENT AS REQUIRED FOR CASES NOT SHOWN HERE. DO NOT INSTALL HANGER INSIDE INSULATION OR OTHERWISE PENETRATE VAPOR BARRIER. DO NOT HANG ONE PIPE FROM ANOTHER EXCEPT IN CHASES. TRAPEZE HANGERS MAY BE USED FOR MULTIPLE PARALLEL PIPES. SLOPE ALL WATER PIPING SLIGHTLY TOWARD DRAINABLE LOCATIONS. HANGER SPACING FOR PIPE SIZE: COPPER: 2"-9" 1 1/2"=8' 1 1/4"=7' 1"=6' 3/4"=6' 3/4"=5'. CAST IRON: 10' AND ONE NEAR ALL JOINTS. STEEL: 3"-12' 2 1/2"=11' 2"=10' 1 1/2"=9' 1"=7' 3/4"=6' 1/2"=5'. LOCATE HANGERS AS CLOSE AS POSSIBLE TO TURNS AND TEES OF PIPE. PROVIDE SUPPLEMENTARY STEEL STRUTS BETWEEN JOISTS IF REQUIRED. LOCATE HANGERS TO TAKE LOAD OFF OF EQUIPMENT CONNECTIONS. ANCHOR WATER PIPE AGAINST SWAYING DUE TO CHANGES IN WATER VELOCITY. PROVIDE SEISMIC BRACING AS REQUIRED BY LOCAL AUTHORITIES. CHAINS OR PERFORATED STRAP IRON OR STEEL IS NOT ACCEPTABLE. DO NOT SUSPEND PIPE FROM JOIST BRACING MEMBERS. REFER TO CODES AND SPECIFICATIONS FOR FURTHER INFORMATION.

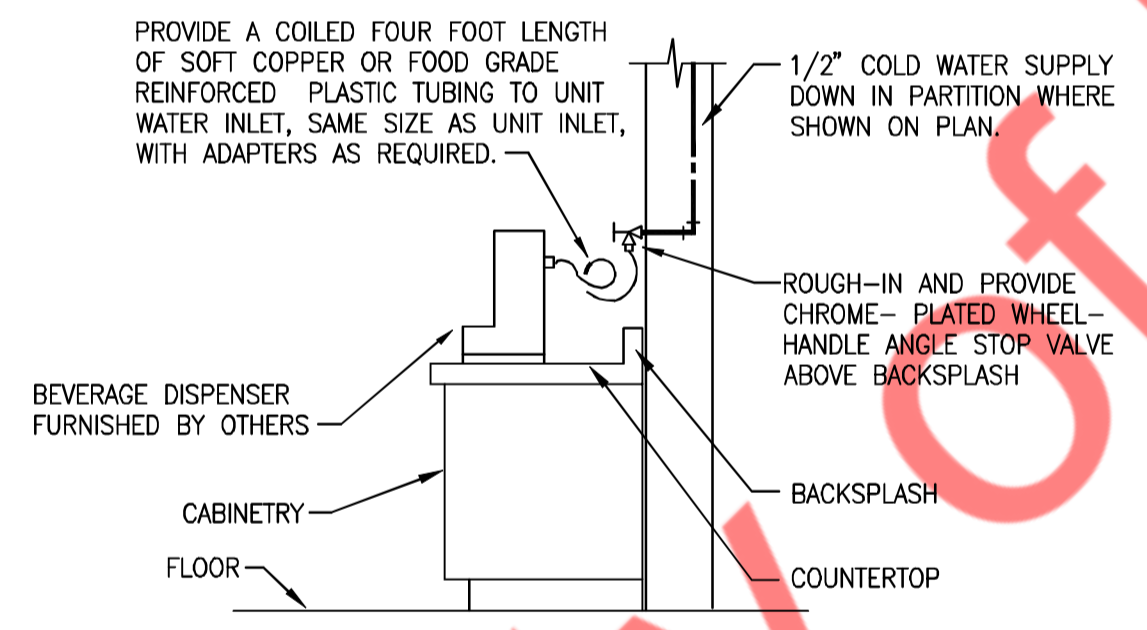
PIPE HANGERS DETAIL

NOT TO SCALE



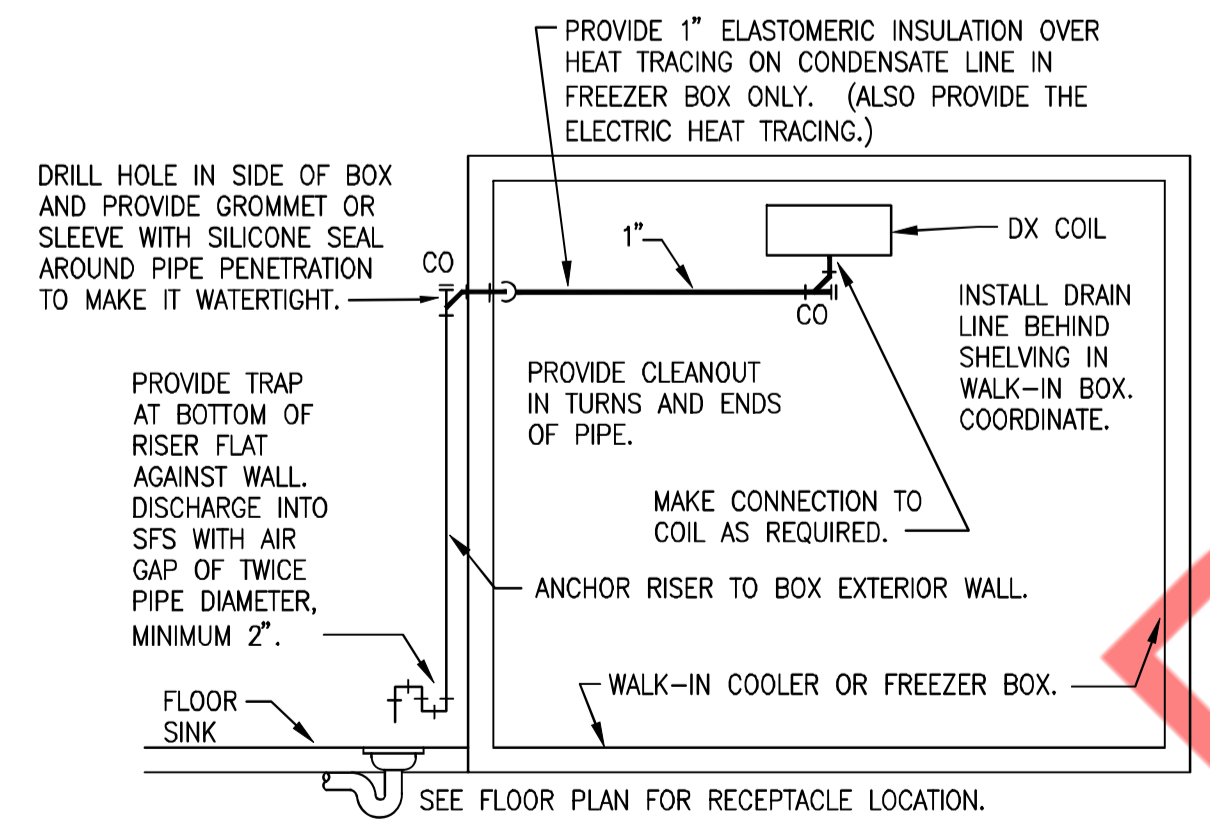
INDIRECT/CONDENSATE DRAIN

NOT TO SCALE



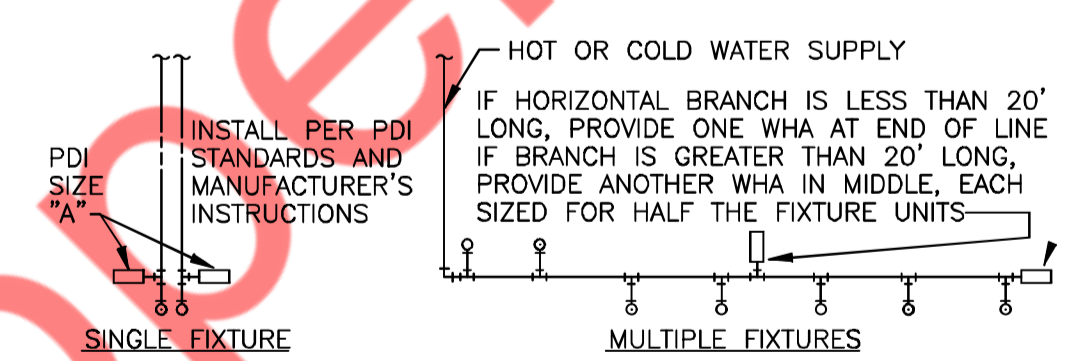
BEVERAGE DISPENSER WATER

NOT TO SCALE



WALK-IN BOX CONDENSATE DRAIN

NOT TO SCALE



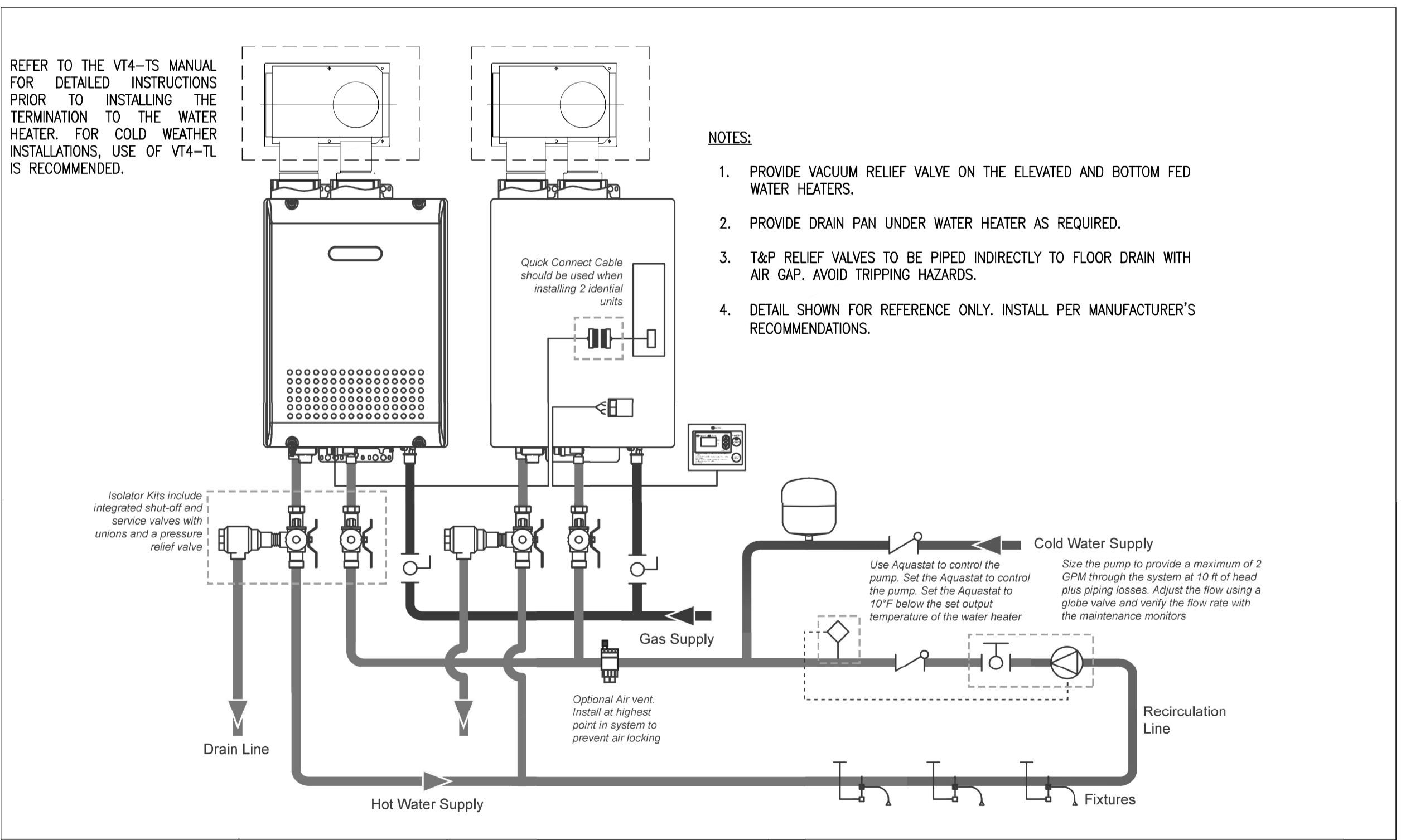
PDI SIZE	PIPE SIZE	FIXTURE UNIT LOAD
A	1/2"	1-11
B	3/4"	12-32
C	1"	33-60
D	1-1/4"	61-113
E	1-1/2"	114-154
F	2"	154-330

FIXTURE UNIT TABULATION	FIXTURE	
	COLD	HOT
VALVE WATER CLOSET	10	--
TANK WATER CLOSET	5	--
URINAL	5	--
LAVATORY/SINK	1.5	1.5
JANITOR'S SINK	3	3
SHOWER/BATHTUB	2	2

PC TO PROVIDE WATER HAMMER ARRESTERS BY SIOUX CHIEF, PRECISION PLUMBING PRODUCTS, WATTS OR APPROVED EQUIVALENT WITH PISTON AND O-RING CONSTRUCTION, HAVING PDI #WH-201, ASSE #1010 AND ANSI #A112.26.1M CERTIFICATION. INSTALL IN HORIZONTAL OR VERTICAL POSITION, BUT NEVER UPSIDE DOWN. INSTALL IN LINE WITH WATER FLOW DIRECTION IF POSSIBLE. SIZE THE UNITS AS SHOWN ON THE DRAWINGS AND/OR PER THE TABLES SHOWN ABOVE.

WATER HAMMER ARRESTORS

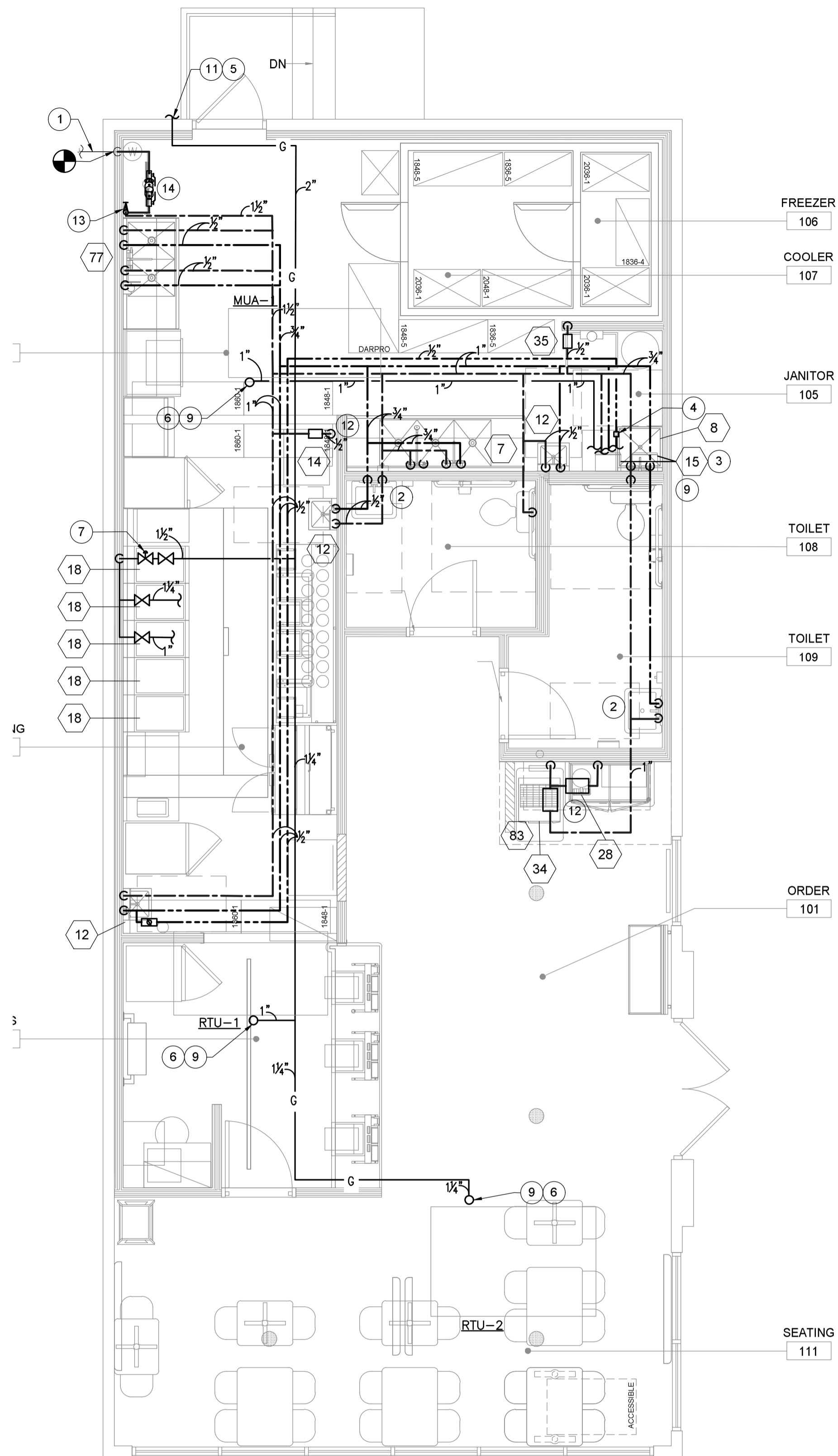
NOT TO SCALE



MODEL	EQUIPMENT LIST		
NCC1991 SERIES	ITEM	PART #	QTY
APPLICATION	CHECK VALVE	FIELD SUPPLIED	2
	EXPANSION TANK	FIELD SUPPLIED	1
	RECIRCULATION PUMP	FIELD SUPPLIED	1
	AQUASTAT	FIELD SUPPLIED	1
	GLOBE VALVE	FIELD SUPPLIED	1
	NORITZ HEATER	NCC1991	2
	REMOTE CONTROLLER	RC-9019M	1
	REMOTE CONTROLLER CORD	RC-CORD10	1
	ISOLATOR KIT	IK-WV-200	2
	QUICK CONNECT CABLE	QC-2	1
AIR VENT	FIELD SUPPLIED	1	

NOTE: This diagram is for reference only. Installation must comply with State and Local Code, all gas and water pipe must be sized correctly to specific length, according to accepted engineering methods or the UPC Code for Noritz Water Heaters to operate correctly.

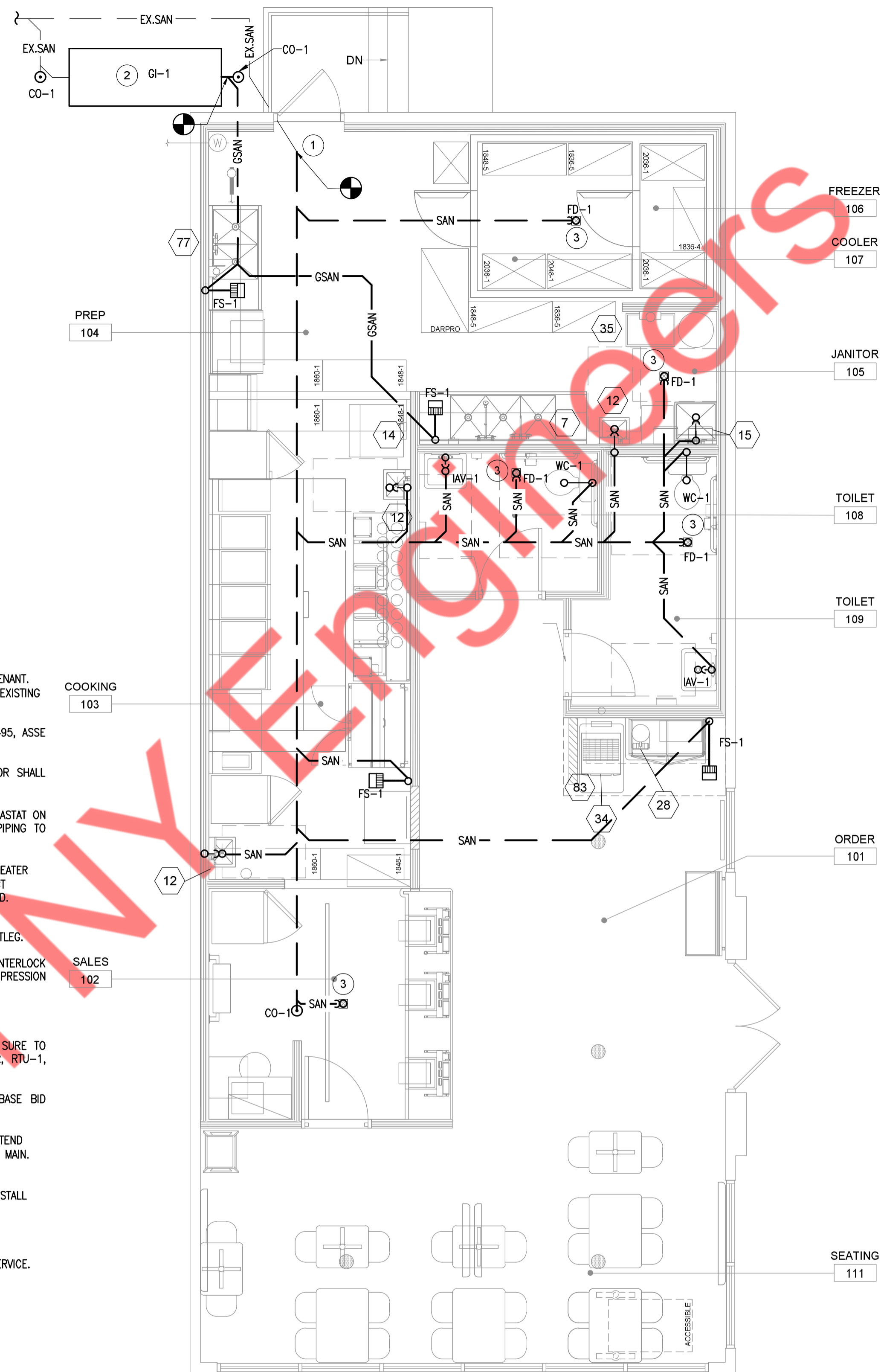
1160 Grace Avenue
Fountain Valley, California 92708
866-7NORITZ (866-766-7489)
www.noritz.com



DOMESTIC WATER & GAS PIPING PLAN NOTES:

- 1 CONNECT NEW 1-1/2" CW TO EXISTING COLD WATER MAIN IN THIS AREA FOR TENANT. EXTEND NEW PIPING AS INDICATED. FIELD VERIFY EXACT SIZE AND LOCATION OF EXISTING MAIN AND WATER METER. PROVIDE RPZ ON DOMESTIC WATER LINE.
- 2 PROVIDE A TEMPERING VALVE FOR LAVATORIES. POWER HYDROGUARD SERIES LM495, ASSE 1070 OR EQUAL. SET TEMPERATURE TO A MAXIMUM OF 110°F.
- 3 1" CW/HW & GAS PIPING TO TANKLESS WATER HEATER. PLUMBING CONTRACTOR SHALL EXTEND WATER HEATER FLUE TO EXTERIOR PER MANUFACTURER'S INSTRUCTIONS.
- 4 PROVIDE HOT WATER RECIRCULATION PUMP & STRAP ON AQUASTAT. INSTALL AQUASTAT ON FIXTURE FURTHEST AWAY FROM HOT WATER HEATER. EXTEND RECIRCULATION PIPING TO TANKLESS WATER HEATERS PER MANUFACTURER'S INSTRUCTIONS.
- 5 CONTRACTOR TO VERIFY IF EXISTING GAS METER'S CAPACITY IS EQUAL TO OR GREATER THAN 1400 CFH. IF NOT, REPLACE EXISTING GAS METER WITH NEW. VERIFY EXACT LOCATION IN FIELD. COORDINATE ALL WORK WITH UTILITY COMPANY AND LANDLORD. EXTEND NEW GAS PIPING UP TO ROOFTOP TO EQUIPMENT AS SHOWN.
- 6 EXTEND GAS LINE TO ROOFTOP UNITS. PROVIDE SHUTOFF VALVE, UNION AND DIRTLG.
- 7 GAS DOWN TO SERVE KITCHEN EQUIPMENT. PROVIDE SOLENOID VALVE AND INTERLOCK WITH KITCHEN EXHAUST HOOD TO SHUTDOWN UPON ACTIVATION OF FIRE SUPPRESSION SYSTEM. SEE DETAIL ON DRAWING #P-0.2 FOR ADDITIONAL INFORMATION.
- 8 6" SODA LINE CONDUIT ABOVE CEILING. SEE SHEETS A2.0 & EQ.01.
- 9 CONTRACTOR TO FIELD VERIFY EXISTING AVAILABLE GAS PRESSURE AND MAKE SURE TO PROVIDE ADEQUATE INLET PRESSURE REQUIRED FOR GAS FIRED WATER HEATER, RTU-1, RTU-2, MUA-1 AND GAS FRYER.
- 10 PROVIDE GAS BOOSTER PUMP IF INLET PRESSURE IS LESS THAN 7" W.C. BASE BID ACCORDINGLY.
- 11 CONNECT NEW 2" GAS TO EXISTING 2" GAS MAIN IN THIS AREA FOR TENANT. EXTEND NEW PIPING AS INDICATED. FIELD VERIFY EXACT SIZE AND LOCATION OF EXISTING MAIN. PROVIDE PRV IF GAS PRESSURE EXCEEDS MAXIMUM REQUIRED GAS PRESSURE.
- 12 PROVIDE 3/4" BFP BY WATTS MODEL SD-2. CONTRACTOR TO FIELD VERIFY AND INSTALL BFP AT AN ACCESSIBLE LOCATION.
- 13 1-1/2" MOCV AND TEST TEE INSTALLED VERTICALLY
- 14 BACKFLOW PREVENTER 1-1/2" RPZ BY WATTS LF-009 FOR DOMESTIC WATER SERVICE.

1 DOMESTIC WATER & GAS PIPING PLAN
SCALE: 1/4" = 1'-0"



SANITARY PIPING PLAN NOTES:

- 1 CONNECT NEW 4" SANITARY TO EXISTING MAIN IN THIS AREA. PLUMBING CONTRACTOR SHALL VERIFY EXACT LOCATION, SIZE, AND INVERT OF EXISTING SANITARY MAIN. SAWCUT AND TRENCH FLOOR AS REQUIRED AND PATCH FLOOR TO MATCH EXISTING.
- 2 EXISTING GREASE INTERCEPTOR, SCHIER GB-250, 100 GPM, 1895 LBS CAPACITY 4" INLET W/ FLOW CONTROL 1-1/2" VENT UP PROVIDED BY LANDLORD. FIELD VERIFY EXACT PLACEMENT OF GREASE TRAP AND COORDINATE WITH LANDLORD FOR DETAILS.
- 3 3" FLOOR DRAIN. PROVIDE WATERLESS SURESEAL TRAP SEALER FOR FLOOR DRAIN. COORDINATE EXACT LOCATION WITH ARCHITECT/OWNER.

2 SANITARY PIPING PLAN
SCALE: 1/4" = 1'-0"

GAS PIPING SIZING CHART - LOW PRESSURE

EQUIVALENT LENGTH	SIZE	1/2"	3/4"	1"	1-1/4"	1-1/2"	2"	2-1/2"	3"	4"
100'	CFH	131	273	514	1,060	1,580	3,050	4,860	8,580	17,500
125'	CFH	116	242	456	936	1,400	2,700	4,300	7,610	15,500
150'	CFH	105	219	413	848	1,270	2,450	3,900	6,890	14,100
175'	CFH	96	202	380	780	1,170	2,250	3,590	6,340	12,900
200'	CFH	90	188	353	726	1,090	2,090	3,340	5,900	12,000
250'	CFH	80	166	313	643	964	1,860	2,960	5,230	10,700

INLET PRESSURE = LESS THAN 2.0 PSI
PRESSURE DROP = 3" W.C.
INITIAL SUPPLY PRESSURE OF 8" INCH W.C. OR GREATER