

LIGHT FIXTURE SCHEDULE:

| SYMBOL | TYPE | MANUFACTURER | MODEL | VOLTAGE | WATTAGE |
|--------|----------------------------|--------------|------------------|---------|---------|
| L-3 | 24 X 48 LED TROFFER | LITHONIA | EPANL-24-48L-35K | 120 | 45.17 |
| L-1 | EMERGENCY EGRESS FIXTURE | SURE-LITE | CU2-LED | 120 | 5 |
| EX | EMERGENCY EGRESS EXIT SIGN | SURE-LITE | APCH7-R | 120 | 5 |

LIGHT FIXTURE SCHEDULE NOTES:

- COORDINATE FINAL FIXTURE MAKE AND MODEL AND DIMMING WITH ARCHITECT.

LIGHTING CONTROLS:

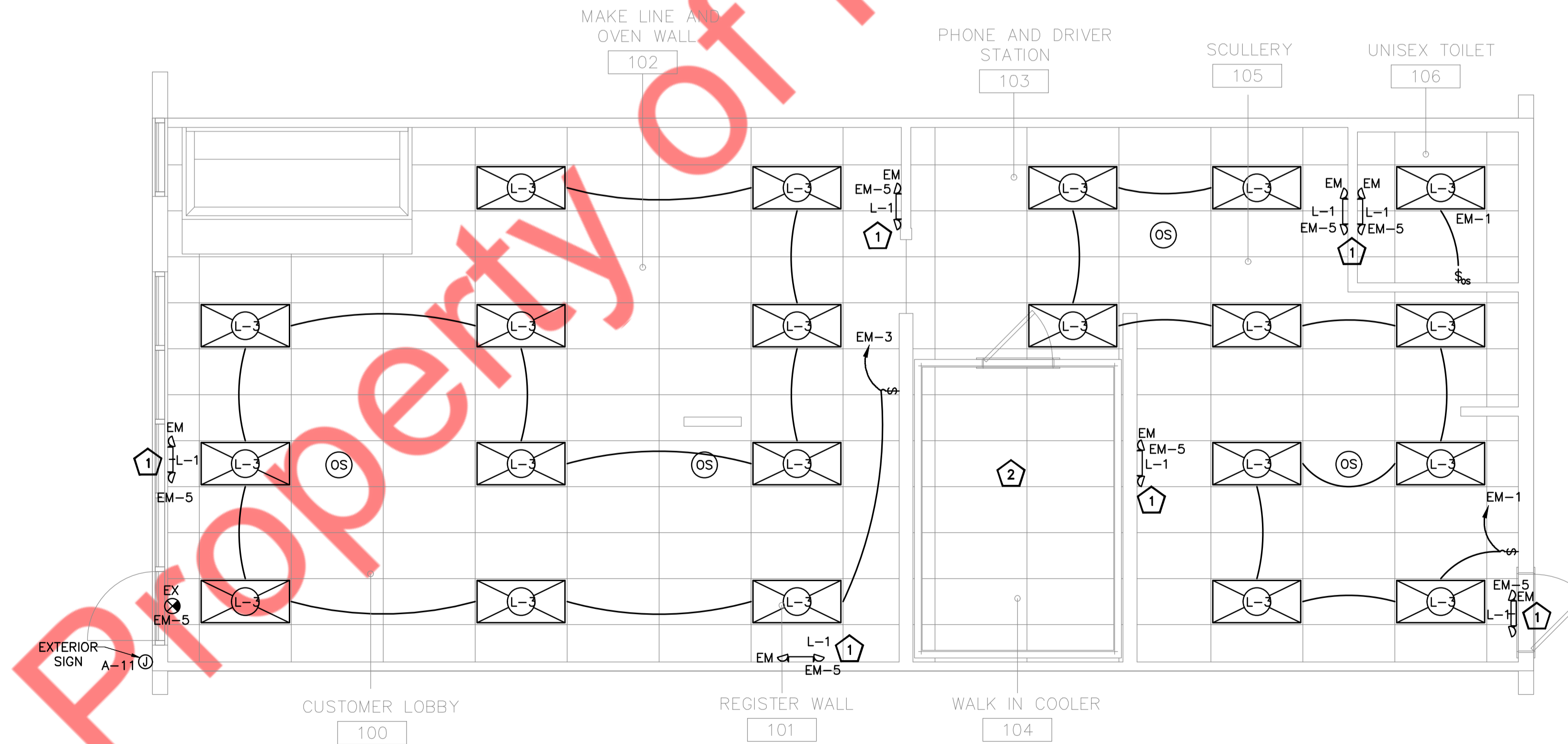
| AREA | CONTROLS |
|--|--|
| MAKE LINE AND OVEN WALL, PHONE AND DRIVER STATION, SCULLERY, CUSTOMER LOBBY. | LIGHTING IN THESE AREAS SHALL BE CONTROLLED VIA CEILING MOUNTED OCCUPANCY SENSOR. FIXTURES DESIGNATED 'EM' (EMERGENCY) TO REMAIN ENERGIZED AT ALL TIMES. |
| RESTROOM | WALL MOUNTED OCCUPANCY SENSOR WITH MANUAL SWITCH FOR MANUAL/AUTOMATIC ON/OFF OF FIXTURES WITH FIXTURES DESIGNATED 'EM' (EMERGENCY) TO REMAIN ENERGIZED AT ALL TIMES. |

LIGHTING CONTROLS NOTES:

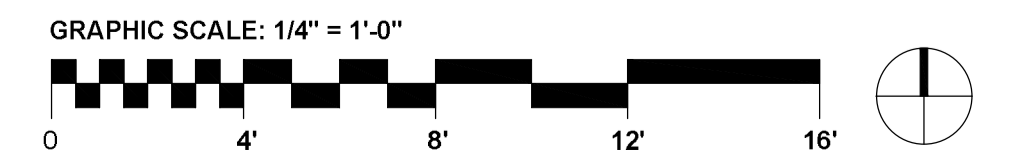
- AUTOMATIC LIGHTING CONTROLS: OCCUPANCY SENSOR SHALL BE CAPABLE OF TURNING OFF LIGHTS WITHIN 20 MINUTES OF ALL OCCUPANT LEAVING THE SPACE AND SHALL BE MANUAL ON.
- ALL ILLUMINATED EXIT SIGN TO HAVE A MAX WATTAGE OF 5 PER SIDE.
- ALL EMERGENCY LIGHT SHALL OPERATE IN EMERGENCY CONDITION.
- LIGHTING REDUCTION IS ACHIEVED BY CONTROLLING ALL LUMINAIRES.

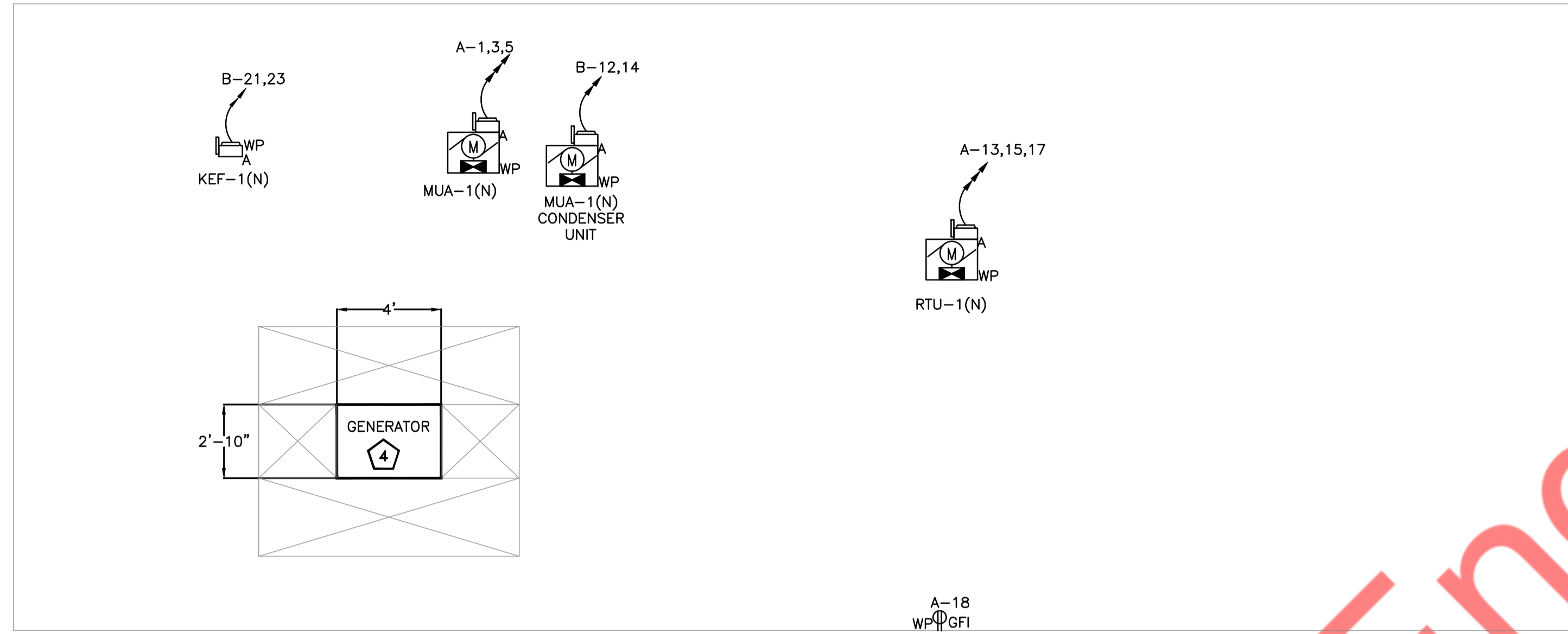
LIGHTING PLAN KEYED NOTES:

- CONNECT ALL EMERGENCY EGRESS AND NIGHT LIGHTING FIXTURES TO NEAREST LIGHTING BRANCH CIRCUIT AHEAD OF ALL SWITCHING AND CONTROLS PER STATE AND LOCAL CODES. EXIT SIGNS SHALL NOT EXCEED 5 WATTS PER FACE.
- ALL WALK IN COOLER LIGHTING FIXTURES AND RELATED LOCAL CONTROLS SHALL BE PROVIDED BY EQUIPMENT SUPPLIER. E.C. SHALL MAKE ALL FINAL CONNECTION TO FIXTURES AS REQUIRED TO ENSURE A COMPLETE OPERATION. CONNECT FIXTURES TO EM-1.



1 ELECTRICAL LIGHTING PLAN
SCALE: 1/4" = 1'-0"





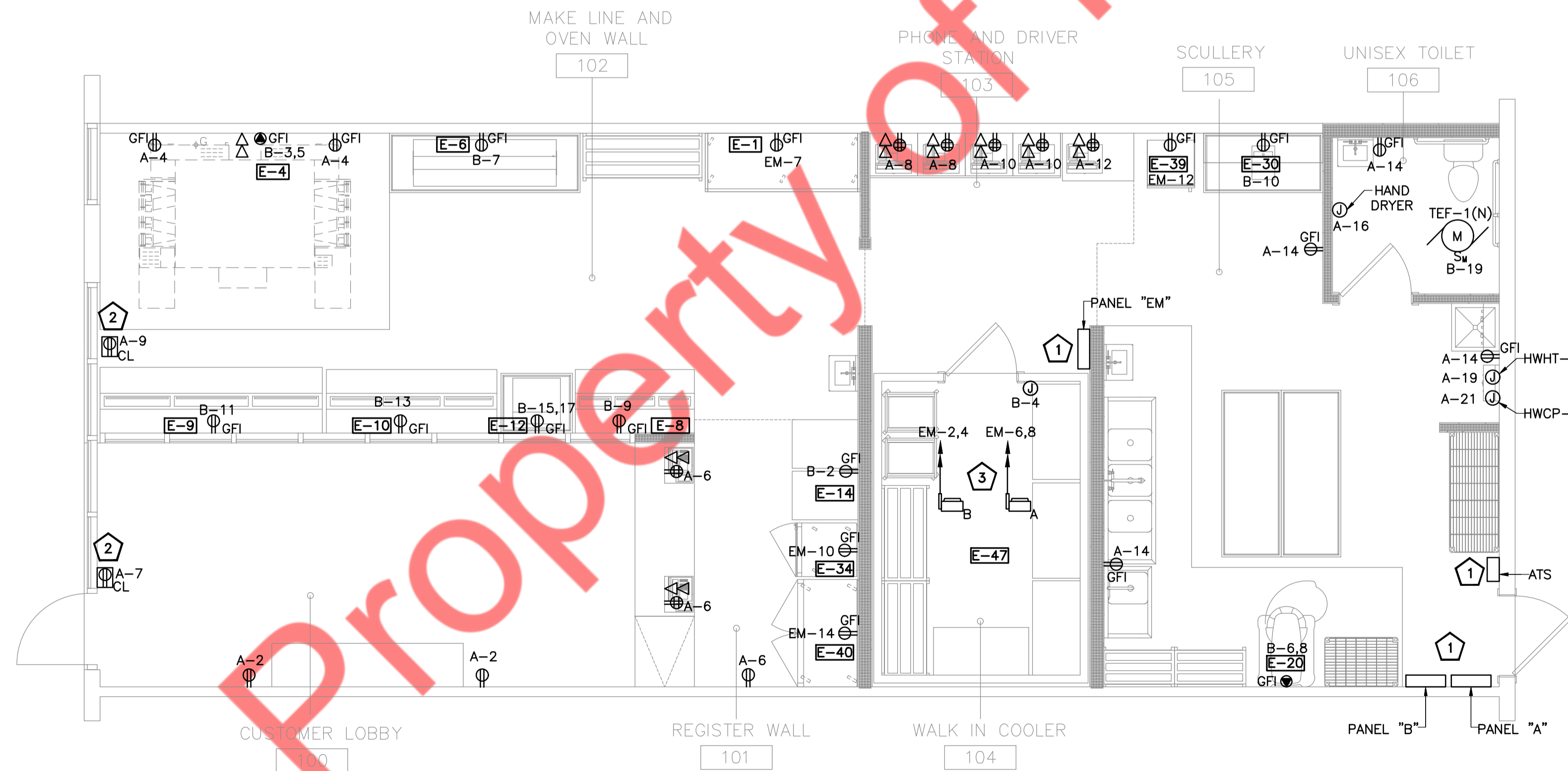
2 ELECTRICAL POWER PLAN (ROOF FLOOR)
SCALE: 1/4" = 1'-0"

ELECTRICAL POWER PLAN KEYED WORK NOTES:

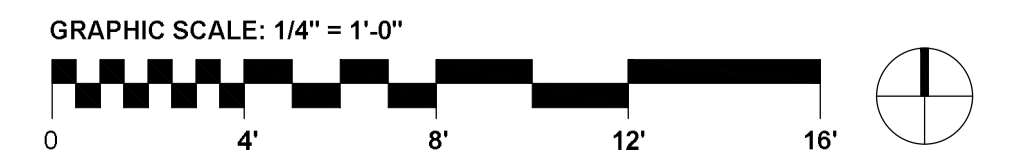
- 1 COORDINATE THE EXACT LOCATION OF NEW ELECTRICAL PANELS "A", "B" & "EM" AND NEW ATS WITH ARCHITECT/OWNER.
- 2 PROVIDE CEILING MOUNTED RECEPTACLE FOR SHOW WINDOW AS REQUIRED BY CODE. VERIFY WITH LOCAL ENERGY AGENCY. VERIFY EXACT LOCATION WITH ARCHITECT.
- 3 ELECTRICAL POWER PROVISION FOR WALK-IN COOLER CONDENSER AND EVAPORATOR UNIT. E.C. SHALL COORDINATE WITH WALK-IN BOX MANUFACTURER FOR EXACT POWER REQUIREMENTS MAKE PROVISION ACCORDINGLY. BASE BID ACCORDINGLY.
- 4 PROPOSED LOCATION OF THE STANDBY GENERATOR BY BRIGGS AND STRATTON (MODEL-040422, 34"W X 31"H, 48"L). E.C. SHALL COORDINATE WITH ARCHITECT/OWNER FOR EXACT LOCATION.

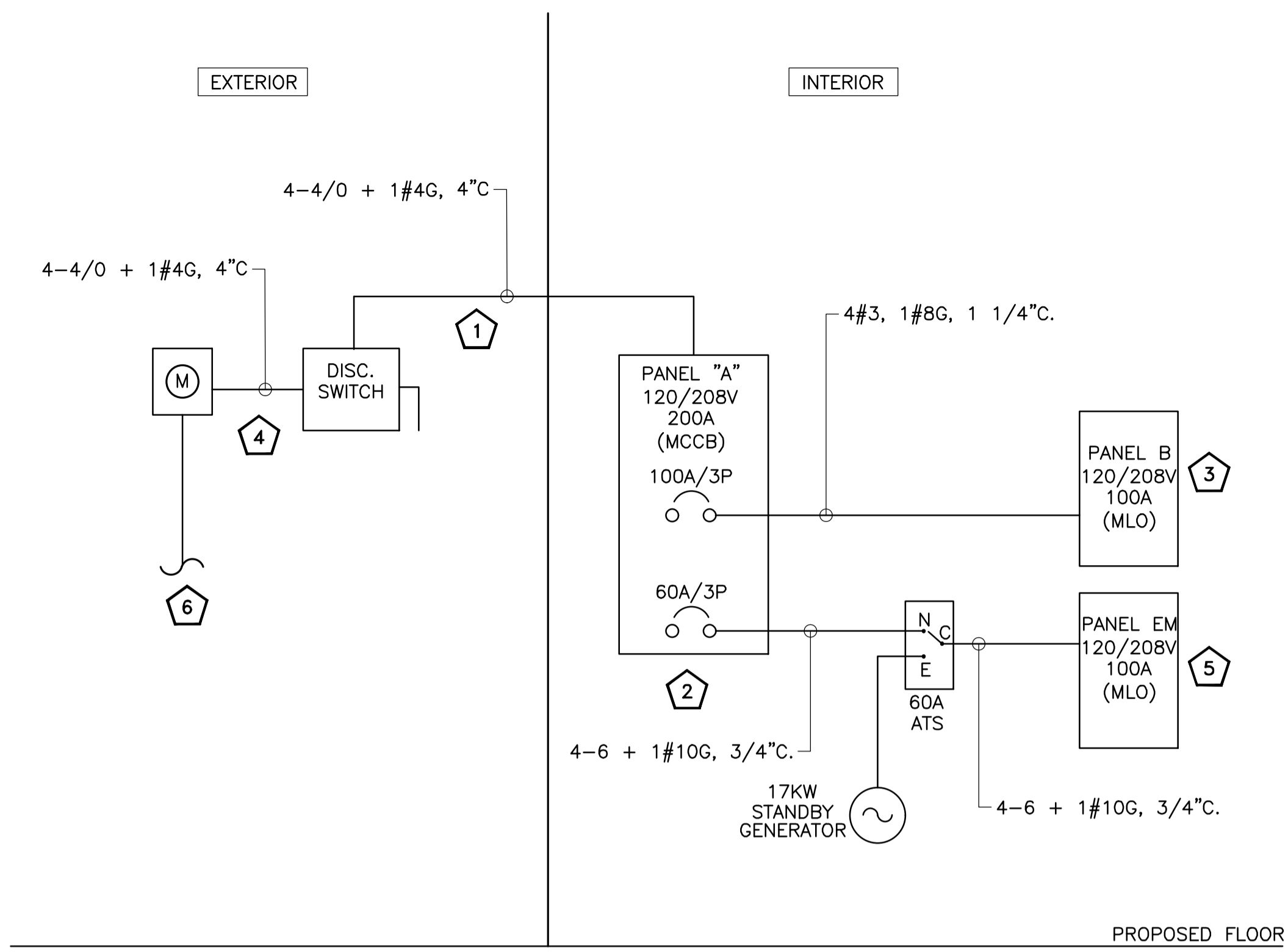
GENERAL POWER PLAN NOTES:

1. EXACT LOCATION OF MECHANICAL, PLUMBING, KITCHEN, FURNITURE SYSTEMS, OWNER FURNISHED EQUIPMENT ETC. THAT REQUIRE ELECTRICAL CONNECTIONS ARE SHOWN ON THE MECHANICAL, PLUMBING, AND/OR ARCHITECTURAL DRAWINGS. COORDINATE EXACT LOCATIONS WITH RESPECTIVE CONTRACTORS AND/OR VENDORS PRIOR TO ANY ROUGH-INS.
2. REVIEW AND COORDINATE WITH ALL TRADES CONTRACT DOCUMENTS TO DETERMINE SPECIFIC MOUNTING LOCATIONS FOR EQUIPMENT WITH ELECTRICAL CONNECTIONS. COORDINATE EXACT MOUNTING LOCATIONS WITH THE SPECIFIC TRADE AND ARCHITECT.
3. MINIMUM CONDUCTOR SIZE FOR 120V BRANCH CIRCUITS SHALL BE 12-AWG. FOR 120V BRANCH CIRCUITS WITH HOMERUN OVER 100 LINEAR FEET, A MINIMUM WIRE SIZE OF 10-AWG SHALL BE PROVIDED FROM FIRST JUNCTION/OUTLET BOX TO BRANCH CIRCUIT PANELBOARD. FOR 120V BRANCH CIRCUITS WITH HOMERUN OVER 150 LINEAR FEET, A MINIMUM OF 8-AWG SHALL BE PROVIDED FROM FIRST JUNCTION/OUTLET BOX TO BRANCH CIRCUIT PANELBOARD.
4. ALL WIRINGS SHALL BE IDENTIFIED BY PANELBOARD AND CIRCUIT NUMBERS IN ALL CABINETS, JUNCTION BOXES, WIRING TROUGHS, ENCLOSURES, SPLICE OR TERMINATION POINTS, ETC.
5. A NEW TYPED PANELBOARD DIRECTORY CARD SHALL BE PROVIDED FOR ALL PANELS INSTALLED OR MODIFIED UNDER THIS CONTRACT. NEW DIRECTORY CARDS SHALL BE LOCATED ON THE INSIDE DOOR OF ASSOCIATED PANELS.
6. ALL 120V, 15A AND 20A RECEPTACLES IN KITCHEN AREA SHALL BE "GFCI" IN ACCORDANCE WITH NEC ARTICLE 210.8(B). PROVIDE GFI RATED BREAKER AT PANEL FOR KITCHEN EQUIPMENT.
7. E.C. SHALL VERIFY THAT WHEREVER CIRCUIT CONDUCTORS ARE SPLICED IN A BOX, ANY/ALL EQUIPMENT GROUNDING CONDUCTORS ASSOCIATED WITH THESE CIRCUITS MUST BE BONDED ("PIGTAILED") TO THE BOX.



1 ELECTRICAL POWER PLAN (GROUND FLOOR)
SCALE: 1/4" = 1'-0"





| PANEL: A(NEW) | | | | | | | | | | | MOUNTING: | | SURFACE | | |
|------------------|-----------|---------------------|-----------|------------|------------------------|-------------------|---|--------|------------------------|-------------------|-----------|--------------------------------|-----------------|---------|----|
| 208Y/120 | VOLTS, | 3 | PHASE, | 4 | WIRE | | | | | | | | | | |
| MAIN CB | 200A | BUS | 200A | MIN, | | | | | | | | | | | |
| CKT NO. | TRIP AMPS | DESCRIPTION OF LOAD | LOAD TYPE | LOAD (KVA) | MINIMUM BRANCH CIRCUIT | PER PHASE (KVA) | | | MINIMUM BRANCH CIRCUIT | LOAD (KVA) | LOAD TYPE | DESCRIPTION OF LOAD | TRIP AMPS | CKT NO. | |
| | | | | | | A | B | C | | | | | | | |
| 1 | | | | M | 0.53 | | | | 2#12, #12G, 3/4"C | 0.36 | R | RECEP-CUSTOMER LOBBY | 20 | 2 | |
| 3 | 15/3P | MUA-1(N) | | M | 0.53 | 3#12, #12G, 3/4"C | | 0.89 | 2#12, #12G, 3/4"C | 0.36 | R | RECEP-MAKE LINE | 20* | 4 | |
| 5 | | | | M | 0.53 | | | 1.43 | 2#12, #12G, 3/4"C | 0.90 | R | RECEP-REGISTER WALL, POS | 20 | 6 | |
| 7 | 20 | SHOW WINDOW | | R | 1.39 | 2#12, #12G, 3/4"C | | 2.11 | 2#12, #12G, 3/4"C | 0.72 | R | POS | 20 | 8 | |
| 9 | 20 | SHOW WINDOW | | R | 1.39 | 2#12, #12G, 3/4"C | | 2.11 | 2#12, #12G, 3/4"C | 0.72 | R | POS | 20 | 10 | |
| 11 | 20 | EXTERIOR SIGN | | L | 1.20 | 2#12, #12G, 3/4"C | | | 1.56 | 2#12, #12G, 3/4"C | 0.36 | R | POS | 20 | 12 |
| 13 | | | | H | 4.03 | | | 4.75 | 2#12, #12G, 3/4"C | 0.72 | R | RECEP-SCULLERY & UNISEX TOILET | 20* | 14 | |
| 15 | 50/3P | RTU-1(N) | | H | 4.03 | 3#8, #10G, 3/4"C | | 5.03 | 2#12, #12G, 3/4"C | 1.00 | R | HAND DRYER | 20 | 16 | |
| 17 | | | | H | 4.03 | | | | 4.39 | 2#12, #12G, 3/4"C | 0.36 | R | ROOF RECEPTACLE | 20* | 18 |
| 19 | 20 | HWHT-1 | | M | 0.18 | 2#12, #12G, 3/4"C | | 0.18 | | | | SPARE | 20 | 20 | |
| 21 | 20 | HWCP-1 | | M | 0.50 | 2#12, #12G, 3/4"C | | 0.50 | | | | SPARE | 20 | 22 | |
| 23 | 20 | SPARE | | | | | | | 9.82 | | | | | 24 | |
| 25 | 20 | SPARE | | | | | | 9.82 | 4#3, #8G, 1 1/4"C | 9.82 | M | TO PANEL B | 100/3P | 26 | |
| 27 | 20 | SPARE | | | | | | 9.82 | | 9.82 | M | | | 28 | |
| 29 | 20 | SPARE | | | | | | | 0.00 | | M | | | 30 | |
| 31 | 20 | SPARE | | | | | | 0.00 | 4#6, #10G, 1 1/4"C | | M | TO PANEL EM | 60/3P | 32 | |
| 33 | 20 | SPARE | | | | | | | 0.00 | | M | | | 34 | |
| 35 | 20 | SPARE | | | | | | | 0.00 | | | SPARE | 20 | 36 | |
| 37 | 20 | SPARE | | | | | | 0.00 | | | | SPARE | 20 | 38 | |
| 39 | 20 | SPARE | | | | | | | 0.00 | | | SPARE | 20 | 40 | |
| 41 | 20 | SPARE | | | | | | | 0.00 | | | SPARE | 20 | 42 | |
| TOTAL LOAD (KVA) | | | | | | | | 17.753 | 18.353 | 17.20 | | | | | |

| PANEL: B(NEW) | | | | | | | | | | | MOUNTING: | | SURFACE | | |
|------------------|-----------|----------------------------|-----------|------------|------------------------|-------------------|---|------|------------------------|-------------------|-----------|-----------------------|-------------------------|---------|----|
| 208Y/120 | VOLTS, | 3 | PHASE, | 4 | WIRE | | | | | | | | | | |
| | 100A | MLO | BUS | 100A | MIN, | | | | | | | | | | |
| CKT NO. | TRIP AMPS | DESCRIPTION OF LOAD | LOAD TYPE | LOAD (KVA) | MINIMUM BRANCH CIRCUIT | PER PHASE (KVA) | | | MINIMUM BRANCH CIRCUIT | LOAD (KVA) | LOAD TYPE | DESCRIPTION OF LOAD | TRIP AMPS | CKT NO. | |
| | | | | | | A | B | C | | | | | | | |
| 1 | 20 | SPARE | | | | 1.50 | | | 2#12, #12G, 3/4"C | 1.50 | F | HOLDING CABINET(E-14) | 20* | 2 | |
| 3 | 20/2P* | CONVEYER PIZZA OVEN(E-4) | | F | 1.24 | 2#12, #12G, 3/4"C | | 1.74 | 2#12, #12G, 3/4"C | 0.50 | F | WALK IN MISC. | 20 | 4 | |
| 5 | | | | F | 1.24 | | | 2.90 | 2#12, #12G, 3/4"C | 1.66 | F | 60 QT. MIXER(E-20) | 20/2P* | 6 | |
| 7 | 20* | 6' HEAT LAMP(E-6) | | F | 1.22 | 2#12, #12G, 3/4"C | | 2.88 | 2#12, #12G, 3/4"C | 1.66 | F | | 20 | 8 | |
| 9 | 20* | 5' SUBS/SALAD UNIT(E-8) | | F | 0.75 | 2#12, #12G, 3/4"C | | 2.28 | 2#12, #12G, 3/4"C | 1.53 | F | CHEESE GRATER(E-30) | 20* | 10 | |
| 11 | 20* | 4 DOOR PIZZA PREP(E-9) | | F | 1.58 | 2#12, #12G, 3/4"C | | | 3.08 | 2#10, #10G, 3/4"C | 1.50 | H | MUA-1(N) CONDENSER UNIT | 30/2P | 12 |
| 13 | 20* | 3-DOOR SAUCE STATION(E-10) | | F | 1.25 | 2#12, #12G, 3/4"C | | 2.75 | | 1.50 | H | | | 14 | |
| 15 | 20/2P* | 2-PASS SHEETER(E-12) | | F | 0.79 | 2#12, #12G, 3/4"C | | 0.79 | | | | SPARE | 20 | 16 | |
| 17 | | | | F | 0.79 | | | 0.79 | | | | SPARE | 20 | 18 | |
| 19 | 20 | TEF-1 (N) | | H | 0.035 | 2#12, #12G, 3/4"C | | 0.03 | | | | SPARE | 20 | 20 | |
| 21 | 20/2P | KEF-1 (N) | | H | 0.92 | 2#12, #12G, 3/4"C | | 0.92 | | | | SPARE | 20 | 22 | |
| 23 | | | | H | 0.92 | | | 0.92 | | | | SPARE | 20 | 24 | |
| 25 | 20 | SPARE | | | | | | 0.00 | | | | SPARE | 20 | 26 | |
| 27 | 20 | SPARE | | | | | | 0.00 | | | | SPARE | 20 | 28 | |
| 29 | 20 | SPARE | | | | | | | 0.00 | | | SPARE | 20 | 30 | |
| TOTAL LOAD (KVA) | | | | | | | | 7.17 | 5.73 | 7.69 | | | | | |

| PANEL: EM(NEW) | | | | | | | | | | | MOUNTING: | | SURFACE | | |
|------------------|-----------|---------------------|-----------|------------|------------------------|-------------------|---|------|------------------------|-------------------|-----------|----------------------------------|---------------------------|---------|----|
| 208Y/120 | VOLTS, | 3 | PHASE, | 4 | WIRE | | | | | | | | | | |
| | 60A | MLO | BUS | 100A | MIN, | | | | | | | | | | |
| CKT NO. | TRIP AMPS | DESCRIPTION OF LOAD | LOAD TYPE | LOAD (KVA) | MINIMUM BRANCH CIRCUIT | PER PHASE (KVA) | | | MINIMUM BRANCH CIRCUIT | LOAD (KVA) | LOAD TYPE | DESCRIPTION OF LOAD | TRIP AMPS | CKT NO. | |
| | | | | | | A | B | C | | | | | | | |
| 1 | 20 | LIGHTING | | L | 0.45 | 2#12, #12G, 3/4"C | | 3.36 | | 2.91 | M | WALK-IN COOLER CONDENSER (E-47) | 40/2P | 2 | |
| 3 | 20 | LIGHTING | | L | 0.50 | 2#12, #12G, 3/4"C | | 3.41 | | 2.91 | M | | | 4 | |
| 5 | 20 | EMERGENCY | | L | 0.04 | 2#12, #12G, 3/4"C | | | 1.60 | 1.56 | M | WALK-IN COOLER EVAPORATOR (E-47) | 20/2P | 6 | |
| 7 | 20* | 3-DOOR FREEZER(E-1) | | F | 1.10 | 2#12, #12G, 3/4"C | | 2.66 | | 1.56 | M | | 20 | 8 | |
| 9 | 20 | SPARE | | | | | | 0.25 | | 2#12, #12G, 3/4"C | 0.25 | F | 1-DOOR SALAD COOLER(E-34) | 20* | 10 |
| 11 | 20 | SPARE | | | | | | | 1.27 | 2#12, #12G, 3/4"C | 1.27 | F | 1-DOOR BEV. COOLER(E-39) | 20* | 12 |
| 13 | 20 | SPARE | | | | | | 1.27 | | 2#12, #12G, 3/4"C | 1.27 | F | 2-DOOR BEV. COOLER(E-40) | 20* | 14 |
| 15 | 20 | SPARE | | | | | | 0.00 | | | | SPARE | 20 | 16 | |
| 17 | 20 | SPARE | | | | | | | 0.00 | | | SPARE | 20 | 18 | |
| 19 | 20 | SPARE | | | | | | 0.00 | | | | SPARE | 20 | 20 | |
| 21 | | SPACE | | | | | | 0.00 | | | | SPACE | | 22 | |
| 23 | | SPACE | | | | | | | 0.00 | | | SPACE | | 24 | |
| 25 | | SPACE | | | | | | 0.00 | | | | SPACE | | 26 | |
| 27 | | SPACE | | | | | | 0.00 | | | | SPACE | | 28 | |
| 29 | | SPACE | | | | | | | 0.00 | | | SPACE | | 30 | |
| TOTAL LOAD (KVA) | | | | | | | | 7.29 | 3.66 | 2.87 | | | | | |

ELECTRICAL RISER NOTES:

- 200A, 120/208V, 3-PH ELECTRICAL INCOMING SERVICE FEEDER RUNNING THROUGH AN EXISTING 4" CONDUIT STUBBED UP TO THE SPACE. E.C TO COORDINATE WITH OWNER/LANDLORD FOR INCOMING SERVICE DETAILS
- 200 AMPS, 120/208V, 3 PHASE ELECTRICAL PANEL "A".
- 100 AMPS, 120/208V, 3 PHASE ELECTRICAL PANEL "B".
- 200 AMPS, 120/208V, 3 PHASE ELECTRICAL METER AND THE DISCONNECT SWITCH SERVING OUR SPACE. E.C. SHALL COORDINATE WITH OWNER FOR EXACT DETAILS ON METERING AND SWITCHGEARS USED.
- 60 AMPS, 120/208V, 3 PHASE EMERGENCY ELECTRICAL PANEL "EM". E.C. TO CO-ORDINATE WITH THE OWNER FOR THE LOADS TO BE SUPPLIED FROM EMERGENCY PANEL "EM".
- 200 AMPS, 120/208V, 3 PHASE ELECTRICAL SERVICE FOR THE SPACE FROM EXISTING ELECTRICAL SWITCHGEAR. E.C. TO COORDINATE WITH OWNER/BASE BUILDING FOR EXACT POWER DISTRIBUTION.

GENERAL NOTES:

- E.C. SHALL VERIFY FAULT CURRENT AVAILABLE WITH UTILITY COMPANY AND CALCULATE EXACT A.I.C. RATING REQUIRED.
- E.C. SHALL VERIFY EXISTING INCOMING SERVICE AMPERAGE, WIRE SIZING AND DISTRIBUTION.

PANEL SCHEDULE NOTES:

- "*" INDICATES CIRCUITS WITH GFCI CIRCUIT BREAKERS.
- TO CO-ORDINATE WITH THE OWNER FOR THE LOADS TO BE SUPPLIED FROM EMERGENCY PANEL "EM".

Property