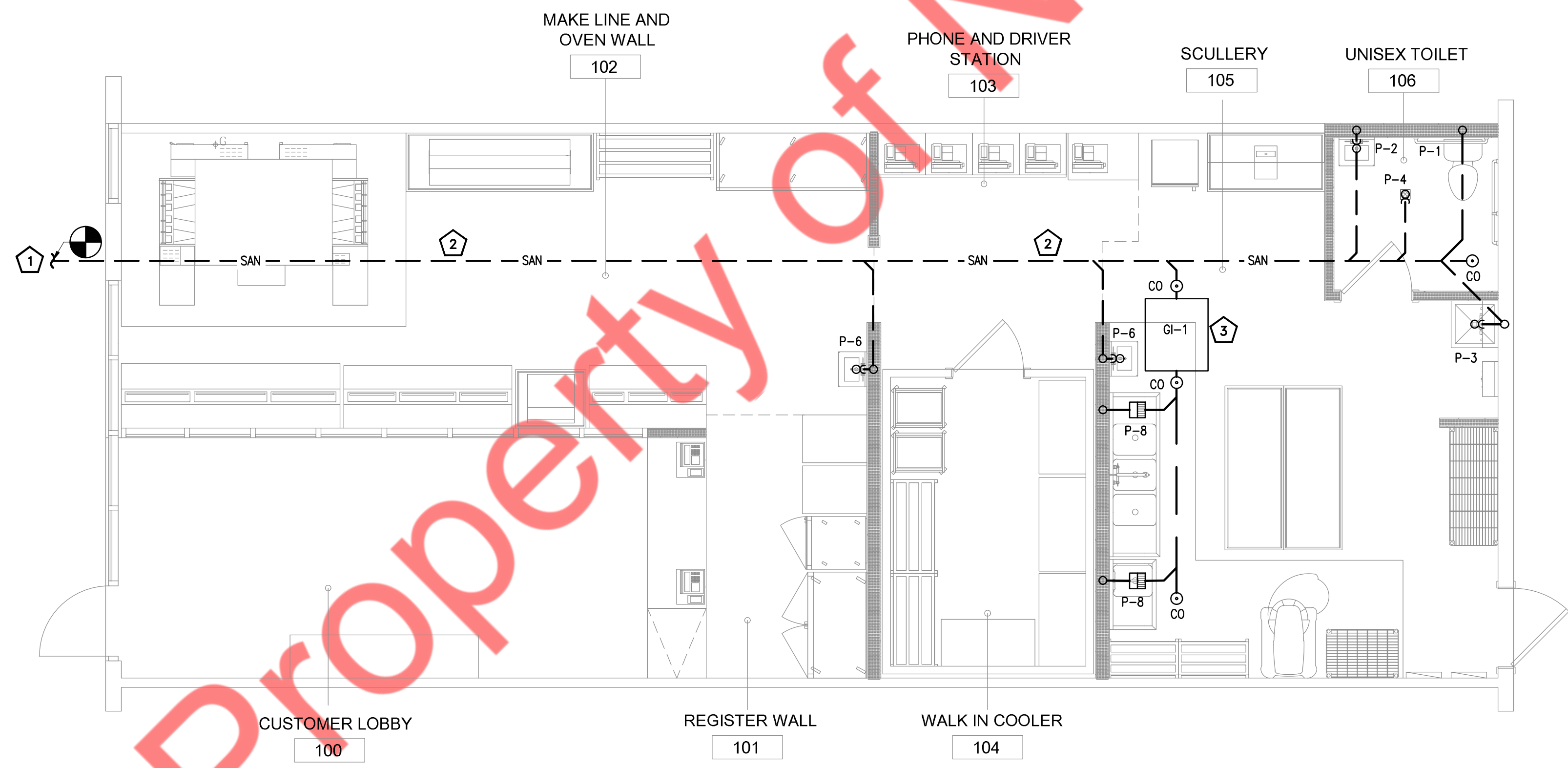


- GENERAL NOTES:**
1. CW/HW PIPING TO BE PROVIDED WITH INSULATION AS PER INTERNATIONAL ENERGY CONSERVATION CODE 2018 (REFER SHEET P001)
  2. PROVIDE BRANCH PRV IF PRESSURE EXCEEDS 85 PSI.
  3. CONTRACTOR TO FIELD VERIFY FEASIBILITY OF SLAB PENETRATION AS PER STRUCTURAL REQUIREMENT.
  4. PROVIDE ACCESS PANELS FOR WATER HAMMER ARRESTOR, CLEANOUTS & SHUT-OFF VALVES AS REQUIRED.
  5. REFER RISER DIAGRAMS FOR ALL PIPE SIZES.

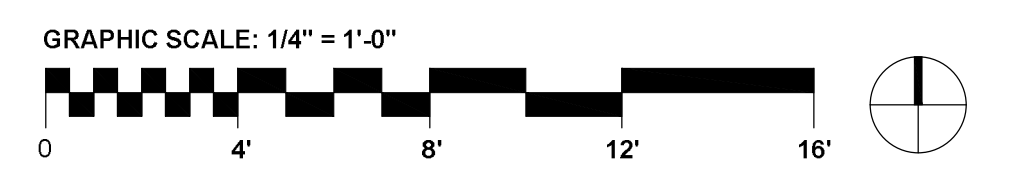
- DOMESTIC WATER AND GAS PLAN NOTES:**
1. ROUTE NEW 1-1/4" CW PIPING WITH SHUT OFF VALVE AND TIE-INTO THE EXISTING WATER LINE. CONTRACTOR TO FIELD VERIFY SIZE, ROUTING, WATER SUBMETER AND BACKFLOW PREVENTER REQUIREMENTS WITH LANDLORD.
  2. PROVIDE A TEMPERING VALVE FOR LAVATORIES. POWER HYDROGUARD SERIES LM495, ASSE. 1070 OR EQUAL. SET TEMPERATURE TO A MAXIMUM OF 110° F.
  3. CONNECT NEW 2-1/2" GAS PIPING TO EXISTING GAS LINE. CONTRACTOR TO VERIFY LOCATION, SIZE AND PRESSURE IN FIELD. INSTALL GAS SHUT-OFF SOLENOID VALVE ON LINE AND GAS COCK. PROVIDE QUICK DISCONNECT AT OVEN MANIFOLD OUTLET.
  4. CONTRACTOR TO FIELD VERIFY EXISTING AVAILABLE GAS PRESSURE AND MAKE SURE TO PROVIDE ADEQUATE INLET PRESSURE REQUIRED FOR HWHT-1, RTU-1(N), MUA-1(N), OVEN, GENERATOR.

**1 DOMESTIC WATER AND GAS PIPING PLAN**  
SCALE: 1/4" = 1'-0"



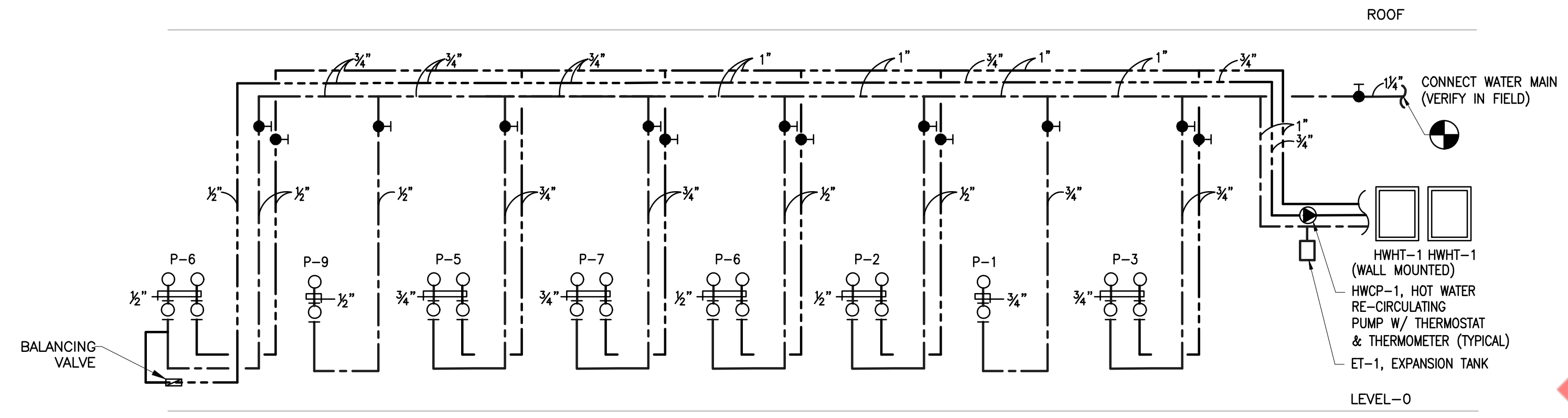
- SANITARY PIPING PLAN NOTES:**
1. CONNECT NEW 4" SANITARY WASTE PIPING TO EXISTING SANITARY SUB-LINE. CONTRACTOR TO FIELD VERIFY SIZE, ROUTING AND INVERT ON SITE.
  2. SANITARY PIPING RUNNING UNDERGROUND SHOWN FOR REFERENCE. CONTRACTOR TO COORDINATE WITH EXISTING STRUCTURAL AND REROUTE AS REQUIRED TO AVOID ANY CONFLICTS AS PER FILED CONDITIONS.
  3. GI-1: GREASE INTERCEPTOR-SCHIER GB-50 GREASE TRAP FOR INDOOR INSTALLATION. FLOW RATE-50 GPM. INSTALL GREASE TRAP AS PER MANUFACTURER RECOMMENDATION.

**2 SANITARY PIPING PLAN**  
SCALE: 1/4" = 1'-0"

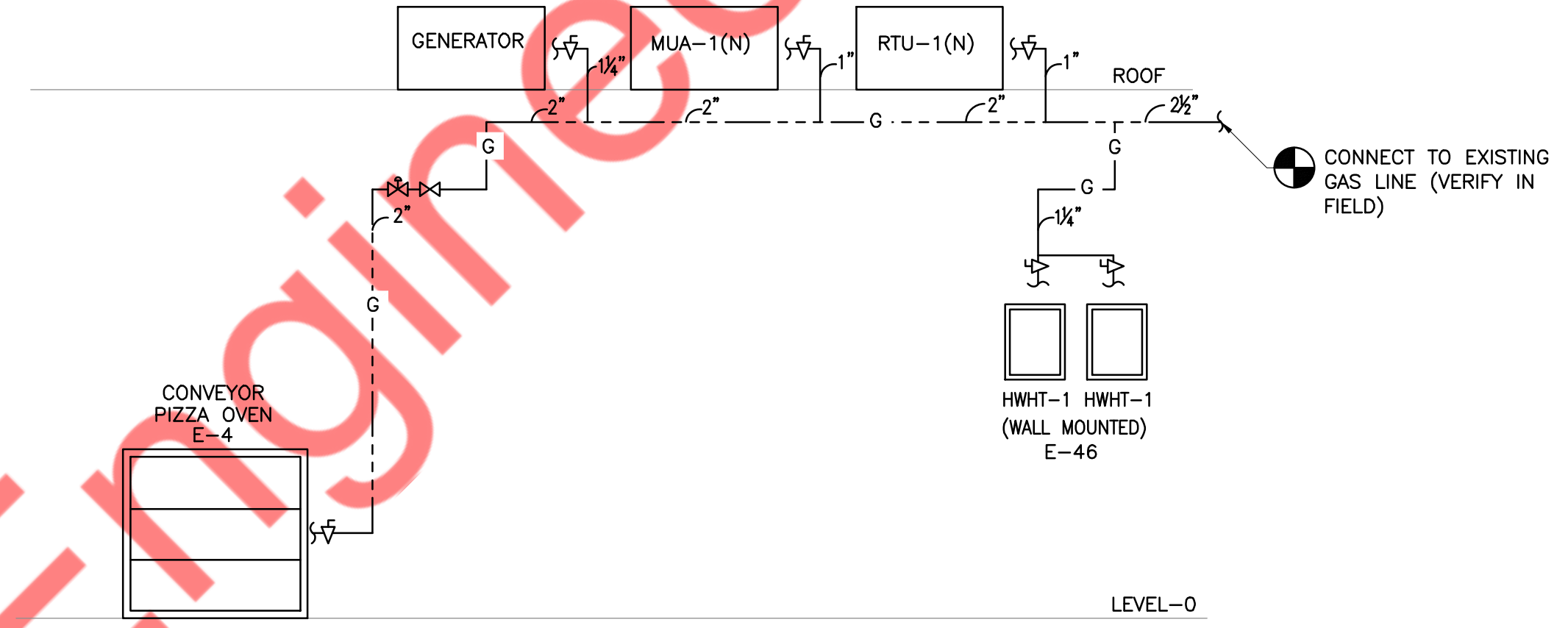


GAS PIPE SCHEDULE						
ITEM NO.	QTY.	DESCRIPTION	MANUFACTURER	MODEL	SIZE	BTU/HR.
-	1	RTU-1(N)	TRANE	YHC102F3	1"	120,000
-	1	MUA-1(N)	FLOAIRE	SA15D-MPU	1"	150,000
-	2	WATER HEATER	RINNAI	CU1991	1 1/2"	398,000
-	1	CONVEYOR PIZZA OVEN	MIDDLEBY MARSHALL	PS-570	2"	510,000
-	1	GENERATOR	BRIGGS & STRATTON	040415	1 1/2"	257,000
TOTAL LOAD						1,435,000

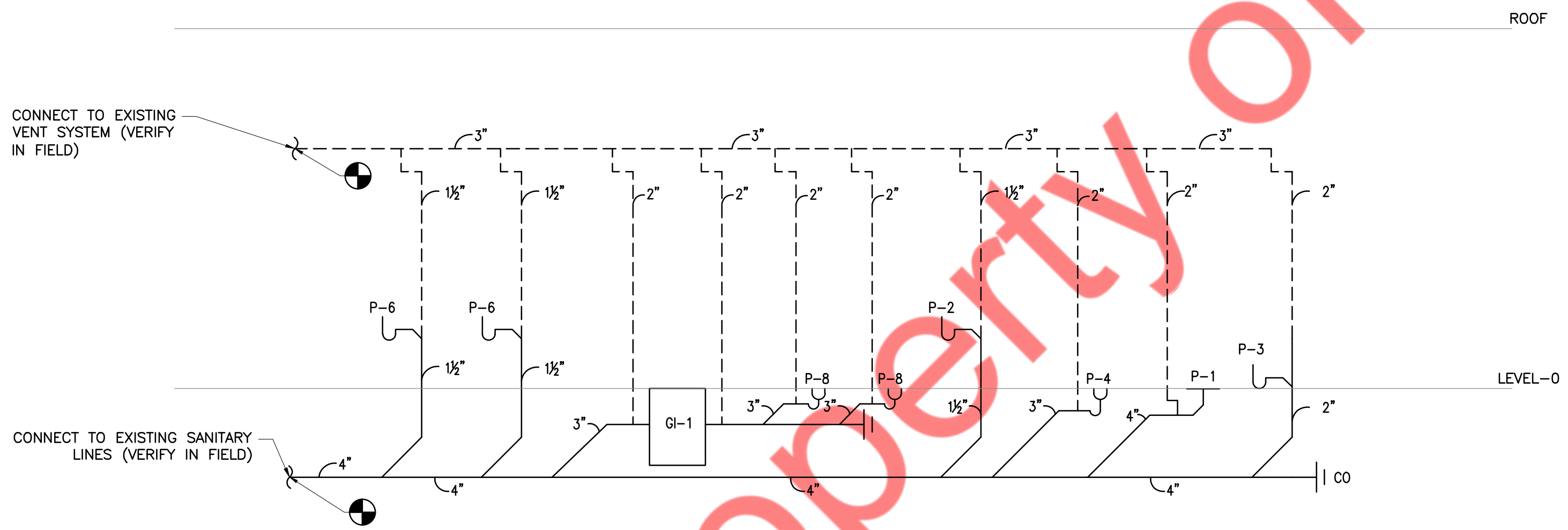
GAS PIPE SIZING PER  
TABLE 402.4, FLORIDA FUEL GAS CODE, 2020.  
TOTAL EQUIVALENT LENGTH OF PIPE = 96 FEET



DOMESTIC WATER SUPPLY RISER DIAGRAM  
NOT TO SCALE



GAS RISER DIAGRAM  
NOT TO SCALE



SANITARY RISER DIAGRAM  
NOT TO SCALE

PLUMBING FIXTURE SCHEDULE				
FIXTURE NO	TYPE	SAN	VENT	CW HW
P-1	WATER CLOSET	4"	2"	3/4" -
P-2	LAVATORY	1-1/2"	1-1/2"	1/2" 1/2"
P-3	MOP SINK	2"	2"	3/4" 3/4"
P-4	FLOOR DRAIN	3"	2"	- -
P-5	1 COMPARTMENT SINK	2"	2"	3/4" 3/4"
P-6	HAND SINK	1-1/2"	1-1/2"	1/2" 1/2"
P-7	3 COMPARTMENT SINK	3"	2"	3/4" 3/4"
P-8	FLOOR SINK	3"	2"	- -
P-9	60 QT MIXER	-	-	1/2" -

NOTE: ALL FIXTURE MAY BE SUBSTITUTED WITH APPROVED EQUAL. CONTACT OWNER FOR APPROVAL

TANKLESS WATER HEATER SCHEDULE							
HEATER TAG	LOCATION	ELECTRICAL CHARACTERISTICS	TYPE	GAS CONSUMPTION (BTU/HR)	FLOW RATE (GPM)	ENERGY FACTOR	WEIGHT (LBS)
HWHT-1	JANITOR ROOM	120V/1Ø/60	GAS	199,000	4.9	0.96	82

RECIRCULATING PUMP SCHEDULE					
ITEM	QUANTITY	GPM	TOTAL HEAD(FT)	MOTOR HP	MANUFACTURER & MODEL NO
HWCP-1	1	2	10	0.115	GRUNDFOS UPS 15-18

EXPANSION TANK SCHEDULE							
TAG	LOCATION	SERVICE	CAPACITY (GALLONS)	MANUFACTURER & MODEL	DIMENSION (DIA X HEIGHT)	WEIGHT (LBS)	NO. OF EXPANSION TANK
ET-1	REFER FLOOR PLANS	HW	2	THERM-X-TROL ST-5	8" X 13"	5	1