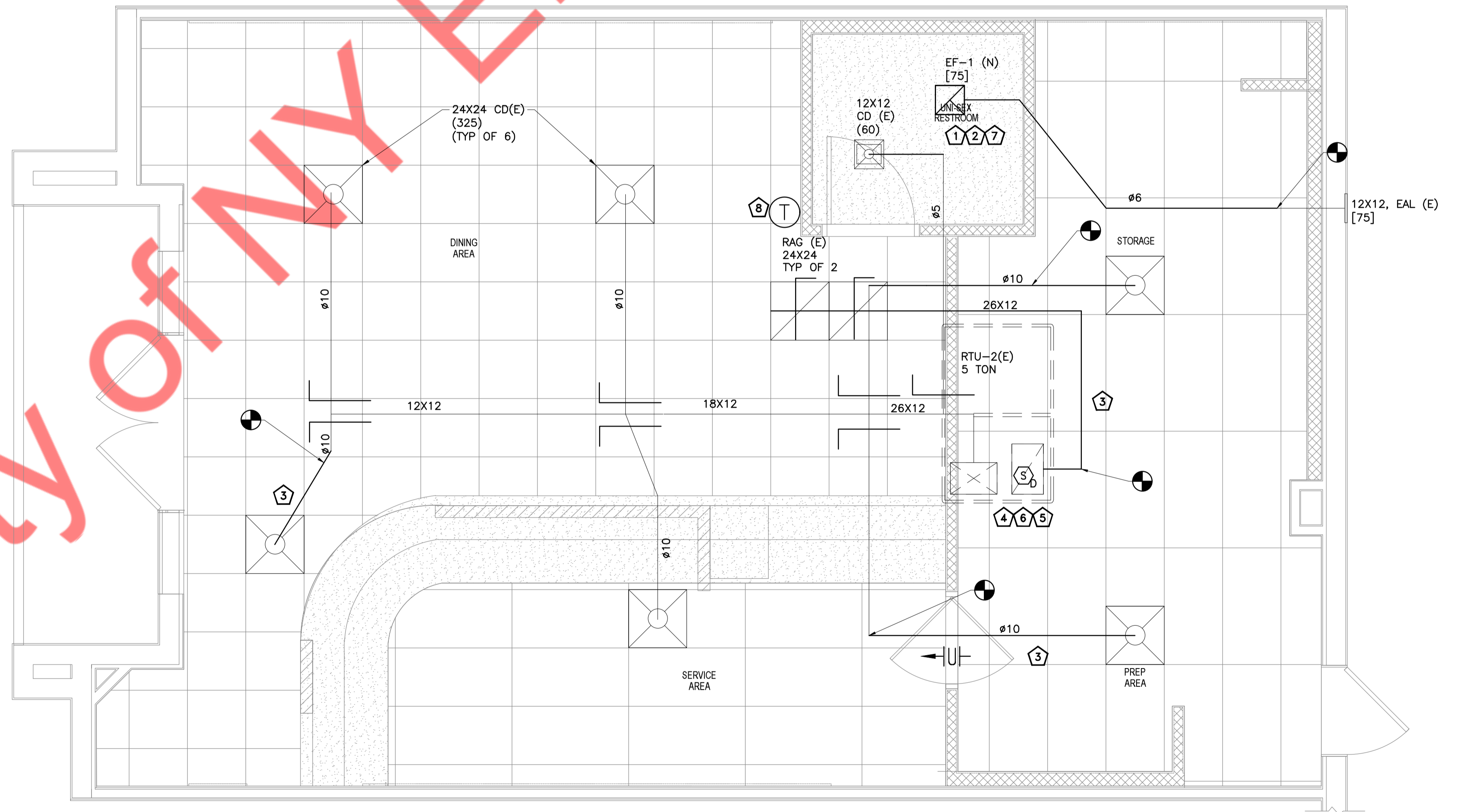


MECHANICAL GENERAL NOTES

- A. CONTRACTOR SHALL BALANCE EACH DEVICE WITH THE CFM SHOWN ON PLAN.
- B. NEW DUCTWORK SHOWN ON PLAN ARE SCHEMATIC ONLY. CONTRACTOR SHALL COORDINATE WITH OTHER TRADES FOR PIPING AND DUCTWORK ROUTING. OFFSET AND RUN PIPING, DUCTWORK INSIDE THE STRUCTURE IF REQUIRED. PROVIDE ANY EXTRA PIPING, DUCTWORK, FITTINGS, INSULATIONS AND OTHER ACCESSORIES IN ORDER TO COMPLETE THE INSTALLATION.
- C. COORDINATE LOCATIONS AND SIZES OF ROOF OPENINGS WITH OWNER AND STRUCTURAL ENGINEERS.
- D. EQUIPMENT SIZES, DIMENSIONS AND REQUIRED CONNECTIONS SHALL BE VERIFIED WITH THE ACTUAL EQUIPMENT SELECTED VENDOR DRAWINGS BEFORE FABRICATION OF DUCTWORK, PIPING ETC.
- E. DUCT SIZES SHOWN ON PLANS ARE CLEAR INSIDE AIR STREAM DIMENSIONS.
- F. CONTRACTOR SHALL COORDINATE ALL ELECTRICAL REQUIREMENTS FOR ALL HVAC BASED ON ACTUAL EQUIPMENT SELECTED PRIOR TO INSTALLATION.
- G. CONTRACTOR SHALL COORDINATE EQUIPMENT WEIGHTS AND SUPPORTS BASED ON ACTUAL EQUIPMENT SELECTED.
- H. COORDINATE WITH ALL TRADES FOR MATERIALS IN RATED AND PLENUM SPACES.
- I. MOUNT DUCTWORK AS HIGH AS POSSIBLE.
- J. TEST AND BALANCE AIR SYSTEMS. PROVIDE REPORT TO G.C AND OWNER.
- K. PROVIDE R-6 INSULATION FOR SUPPLY AND RETURN DUCT.
- L. PROVIDE WEATHER PROOF COATING FOR ALL EXTERIOR DUCTING.
- M. COORDINATE ALL EQUIPMENT WITH STRUCTURAL.
- N. CONTRACTOR TO COORDINATE EXISTING AIR TERMINAL LOCATIONS WITH THE LATEST ARCHITECTURAL RCP LAYOUT. MAKE NECESSARY CHANGES AS REQUIRED.

KEY NOTES:

- 1 PROVIDE NEW EF-1(N) IN UNISEX RESTROOM AS PER ARCHITECTURAL PLAN.
- 2 PROVIDE NEW EXHAUST AIR DUCT FOR EF-1(N).
- 3 PROVIDE SUPPLY & RETURN AIR DUCT FOR RELOCATED RG (E) AND CD (E) AS SHOWN IN PLAN.
- 4 SMOKE DETECTOR SHALL BE FURNISHED/INSTALLED BY MECHANICAL CONTRACTOR AND WIRED BY ELECTRICAL CONTRACTOR TO SHUT DOWN CORRESPONDING RTU UNDER ALARM CONDITIONS. ALL WIRING SHALL BE IN CONDUIT PER N E C SMOKE DETECTOR SHALL BE SYSTEM SENSOR MODEL DH100ACDCLP OR EQUAL.
- 5 CONTRACTOR TO RUN CONDENSATE DRAIN FROM RTU-2(E) TO SINK TAIL PIECE CONNECTION OR NEAREST ROOF DRAIN. COORDINATE WITH PLUMBING ENGINEER.
- 6 PROVIDE REMOTE TEMP SENSOR MOUNTED IN RETURN DUCT AND WIRE BACK TO T-STAT IN DINING AREA.
- 7 CEILING MOUNTED EXHAUST FAN. INTERCONNECT EXHAUST FAN WITH LIGHTS IN THIS ROOM. REFER TO ELECTRICAL LIGHTING PLAN. FAN SHALL BE SUSPENDED FROM STRUCTURE ABOVE. VERIFY EXACT LOCATION OF STRUCTURAL MEMBERS PRIOR TO INSTALLATION.
- 8 LOCATION OF DIGITAL THERMOSTAT CONTROL. INSTALL AND WIRE NEW 7-DAY PROGRAMMABLE THERMOSTAT. COORDINATE EXACT LOCATION WITH ARCHITECT AND OWNER PRIOR TO ROUGH-IN. PROVIDE LOCKABLE COVER.



MECHANICAL FLOOR PLAN

Scale: 3/8" = 1'-0"

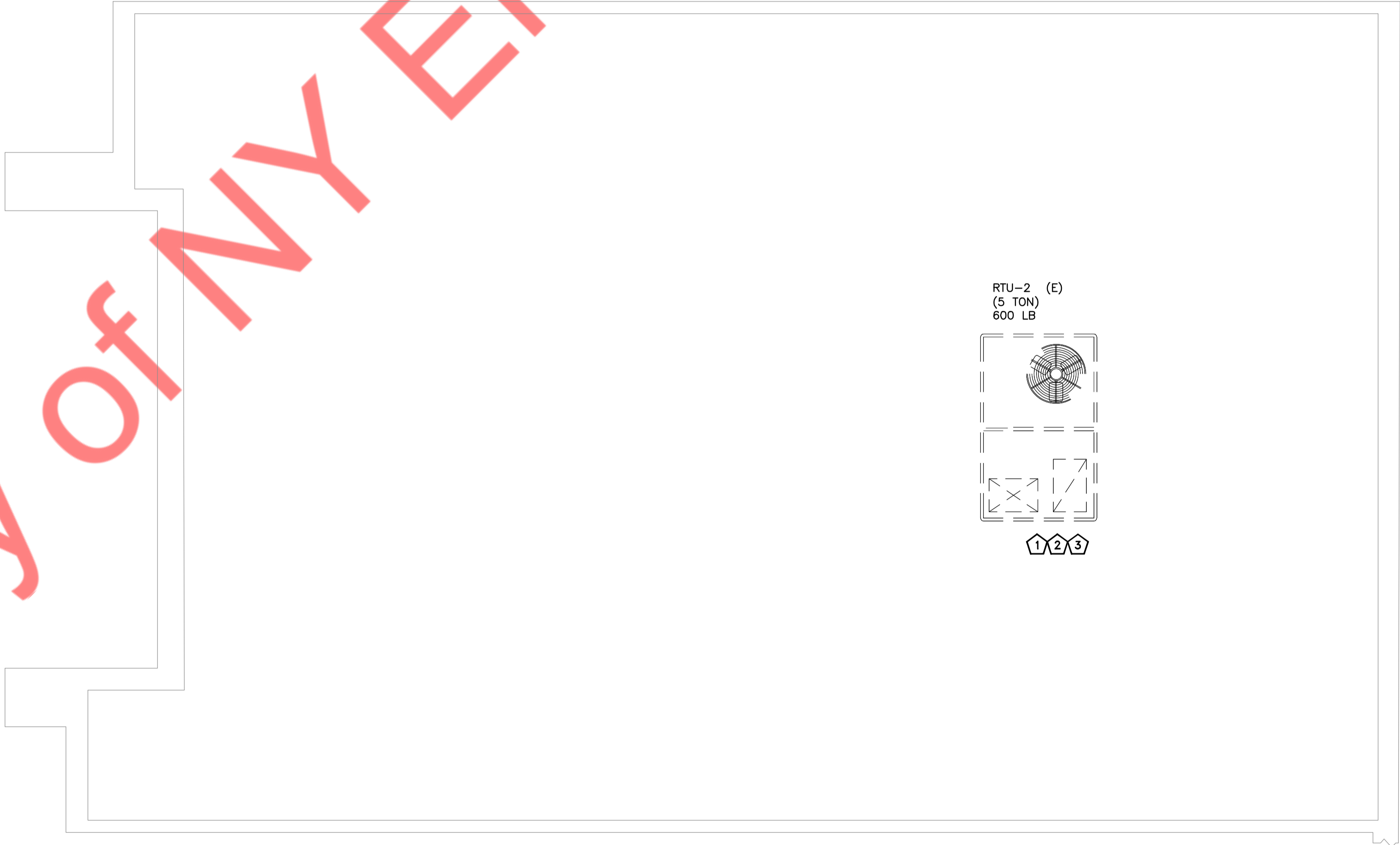
Property of NY Engineers

MECHANICAL GENERAL NOTES

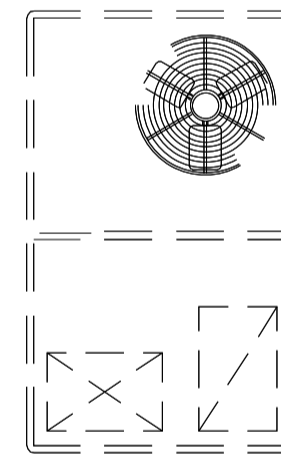
- A. CONTRACTOR SHALL BALANCE EACH DEVICE WITH THE CFM SHOWN ON PLAN.
- B. COORDINATE LOCATIONS AND SIZES OF ROOF OPENINGS WITH OWNER AND STRUCTURAL ENGINEERS.
- C. EQUIPMENT SIZES, DIMENSIONS AND REQUIRED CONNECTIONS SHALL BE VERIFIED WITH THE ACTUAL EQUIPMENT SELECTED VENDOR DRAWINGS BEFORE FABRICATION OF DUCTWORK, PIPING ETC.
- D. CONTRACTOR SHALL COORDINATE ALL ELECTRICAL REQUIREMENTS FOR ALL HVAC BASED ON ACTUAL EQUIPMENT SELECTED PRIOR TO INSTALLATION.
- E. CONTRACTOR SHALL COORDINATE EQUIPMENT WEIGHTS AND SUPPORTS BASED ON ACTUAL EQUIPMENT SELECTED.
- F. COORDINATE WITH ALL TRADES FOR MATERIALS IN RATED AND PLENUM SPACES.
- G. TEST AND BALANCE AIR SYSTEMS. PROVIDE REPORT TO G.C AND OWNER.
- H. PROVIDE WEATHER PROOF COATING FOR ALL EXTERIOR DUCTING.
- I. COORDINATE ALL EQUIPMENT WITH STRUCTURAL.

KEY NOTES:

- 1 EXISTING CONDENSATE TO RTU TO REMAIN AND REUSE.
- 2 ALL EXHAUST AIR SOURCES ON THE ROOF SHALL BE MINIMUM 10 FT. AWAY FROM OUTSIDE AIR INTAKES.
- 3 CONTRACTOR TO BALANCE OUTDOOR CFM AS SHOWN ON THE AIR BALANCING TABLE.



RTU-2 (E)
(5 TON)
600 LB



1 2 3



MECHANICAL ROOF PLAN

Scale: 3/8" = 1'-0"