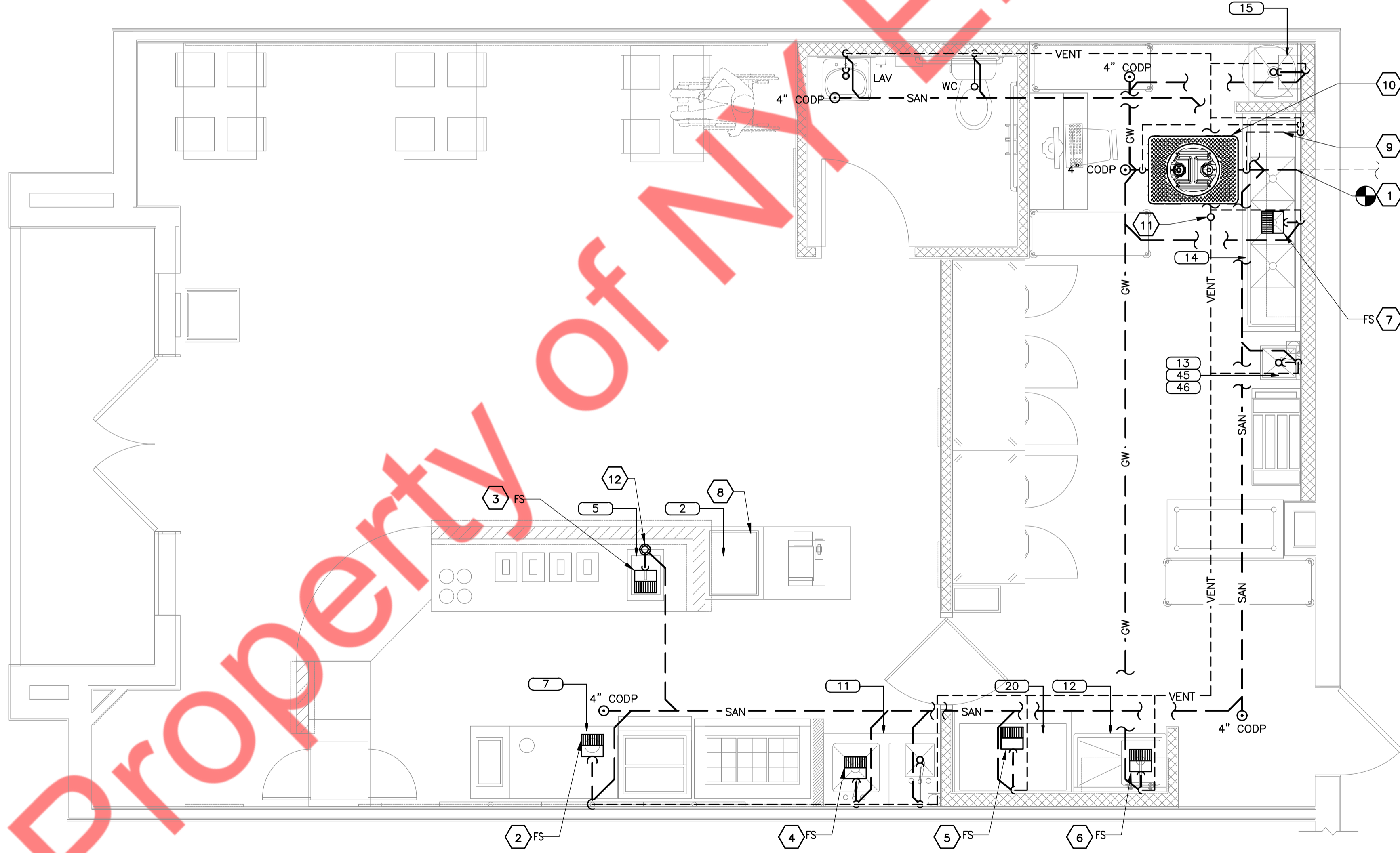
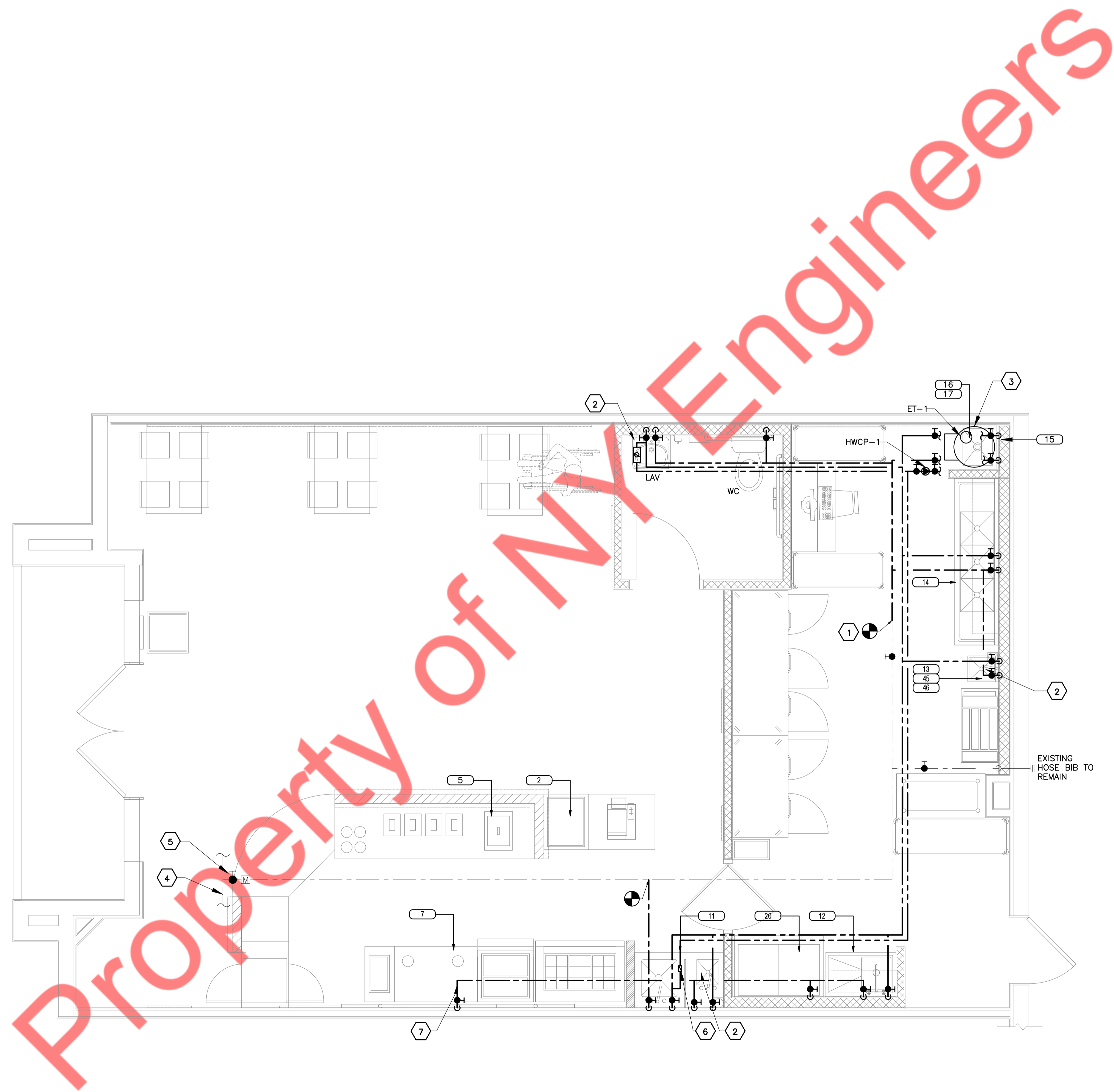


Property of N Engineers



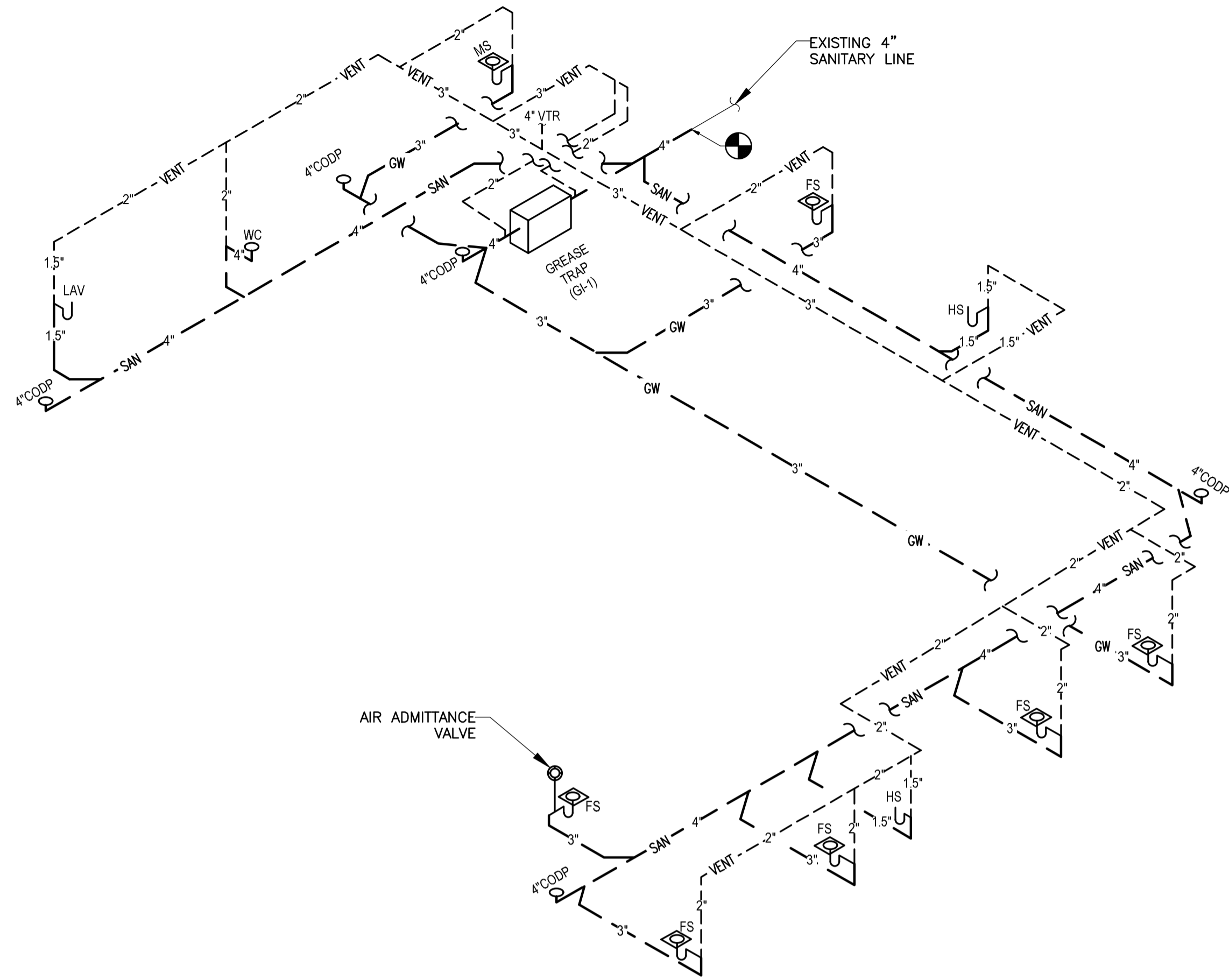
- SANITARY KEYED NOTES:
- 1 CONNECT NEW 4" SANITARY PIPING TO EXISTING 4" SANITARY PIPING. CONTRACTOR SHALL VERIFY EXACT SIZE, INVERT AND LOCATION.
 - 2 ROUTE INDIRECT WASTE FROM DIPPER WELL DRIP IN TO FLOOR SINK WITH APPROVED AIR GAP.
 - 3 ROUTE INDIRECT WASTE FROM ICE BIN TO FLOOR SINK WITH APPROVED AIR GAP.
 - 4 ROUTE INDIRECT WASTE FROM JAR RINSER SINK UNIT TO FLOOR SINK WITH APPROVED AIR GAP.
 - 5 ROUTE INDIRECT WASTE FROM ICE FLAKER UNIT TO FLOOR SINK WITH APPROVED AIR GAP.
 - 6 ROUTE INDIRECT WASTE FROM ONE COMPARTMENT UNIT SINK TO FLOOR SINK WITH APPROVED AIR GAP.
 - 7 ROUTE INDIRECT WASTE FROM 3 COMPARTMENT SINK UNIT TO FLOOR SINK WITH APPROVED AIR GAP.
 - 8 ROUTE INDIRECT WASTE FROM COLD BEVERAGE PAN TO FLOOR SINK WITH APPROVED AIR GAP.
 - 9 VENT PIPE BELOW FLOOR
 - 10 BELOW GRADE GREASE INTERCEPTOR SCHIER GB-3 OR EQUIVALENT. INSTALL GREASE INTERCEPTOR AS PER MANUFACTURER RECOMMENDATION.
 - 11 CONTRACTOR TO FIELD VERIFY EXACT LOCATION OF EXISTING 3" VTR. REPLACE THE VTR SIZE TO 4" AND CONNECT NEW VENT PIPING TO 4" VTR.
 - 12 AIR ADMITTANCE VALVE



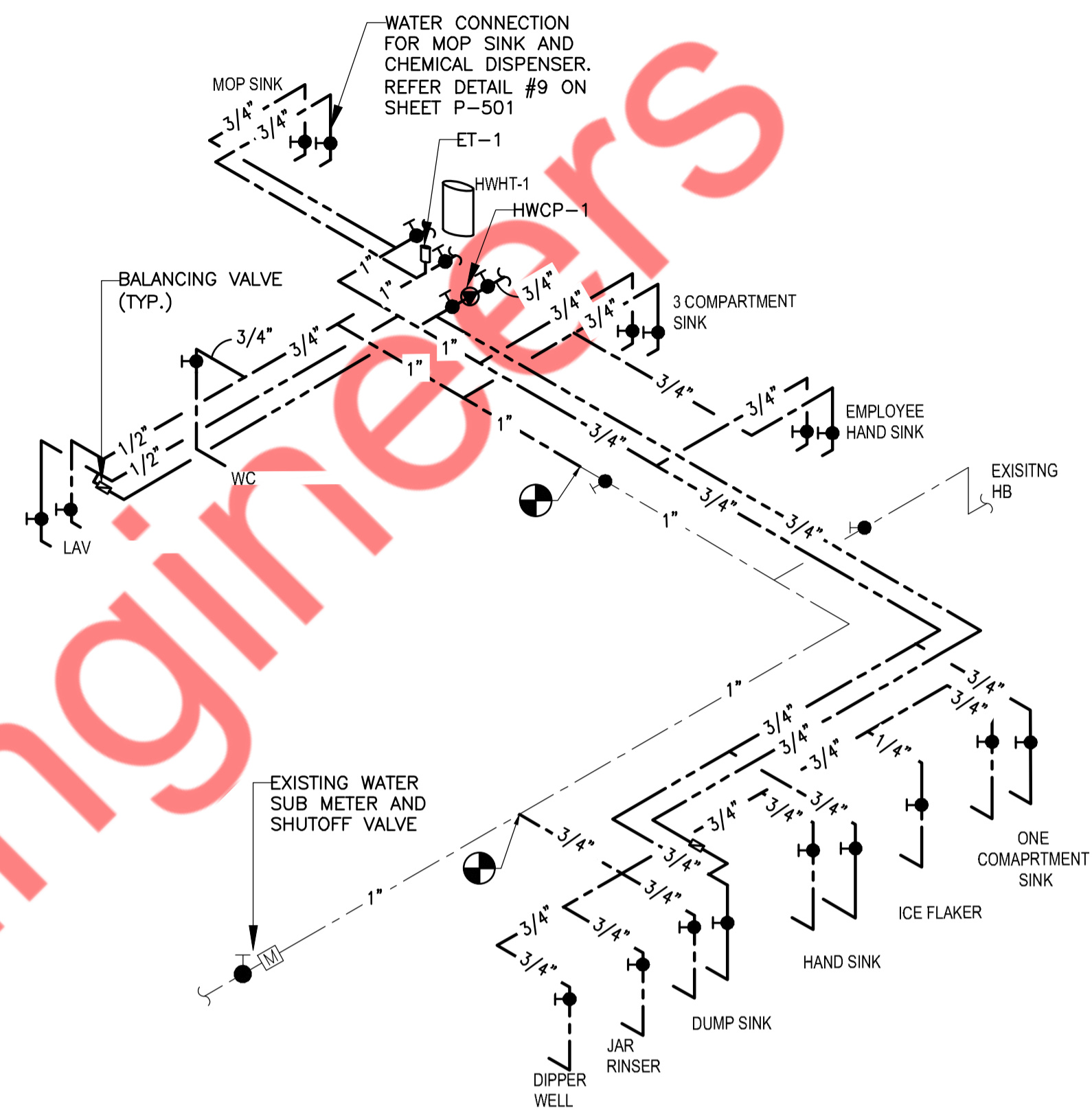
WATER SUPPLY NOTES:

- 1 EXTEND AND CONNECT NEW 1" CW PIPING TO EXISTING STUBOUT. CONTRACTOR TO FIELD VERIFY SIZE AND LOCATION IN FIELD.
- 2 PROVIDE THERMOSTATIC MIXING VALVES AT ALL LAVATORIES AND SINK. SET AT 110° F MAX.
- 3 CEILING MOUNTED ELECTRIC WATER HEATER (HWHT-1) W/ ET-1 AND HWCP-1
- 4 EXISTING WATER LINE TO REMAIN. CONTRACTOR TO FIELD VERIFY SIZE AND LOCATION.
- 5 EXISTING WATER SUB-METER AND VALVE TO REMAIN.
- 6 BALANCING VALVE.
- 7 COLD WATER STUB FOR DIPPER WELL.

EXISTING HOSE BIB TO REMAIN



01 SANITARY RISER DIAGRAM
NO SCALE



02 WATER RISER DIAGRAM
NO SCALE

EQUIPMENT LIST								
EQ#	QTY	DESCRIPTION	MANUFACTURER	MODEL	CWS	HWS	DRAIN	REMARK
2	1	COLD BEVERAGE PAN	ADVANCE TABCO	DICP-1	-	-	1"	DRAIN INDIRECTLY TO FLOOR SINK
5	1	ICE BIN	DELFIELD	305	-	-	1"	DRAIN INDIRECTLY TO FLOOR SINK
7	1	DIPPER WELL DRIP- IN W/FLOOR SINK	FMP	117-1130	-	-	1.5"	DRAIN INDIRECTLY TO FLOOR SINK
11	1	JAR RINSER SINK UNIT W/HAND SINK COMBO	TARRISON	48" OR 42" LONG REF PLAN	#2 0.75"	#2 0.75"	1.5"	JAR RINSER SINK DRAIN INDIRECT TO FLOOR SINK HAND SINK DRAIN DIRECTLY TO SANITARY LINE
12	1	ONE COMPARTMENT SINK DB RIGHT	TARRISON	PL-1B18-RD18-12D	0.75"	0.75"	1"	DRAIN INDIRECTLY TO FLOOR SINK
13	1	EMPLOYEE HAND SINK	TARRISON	HSF-14SP	0.75"	0.75"	1.5"	DRAIN DIRECTLY TO SANITARY LINE
14	1	3 COMPARTMENT SINK	TARRISON	PS3-1BLR	0.75"	0.75"	1"	DRAIN INDIRECTLY TO FLOOR SINK
15	1	MOP SINK	UNIVERSAL STAINLESS	MOP-20-12	0.5"	0.5"	1"	DRAIN DIRECTLY TO SANITARY LINE MOP SINK FAUCET- T&S B-0655-BSTP
17	1	WATER HEATER	A.O.SMITH	DRE-52	1.25"	1.25"	1"	DRAIN INDIRECTLY TO MOP SINK
20	1	ICE FLAKER	HOSHIZAKI	F-801MAJ & B-800PF	0.25"	-	0.75"	DRAIN INDIRECTLY TO FLOOR SINK

PLUMBING SCHEDULE						
FIXTURE	DESCRIPTION	MANUFACTURER	MODEL	CWS	HWS	DRAIN
WC	WATER CLOSET	KOHLER	K-5481-U	0.5"	-	4"
LAV	LAVATORY	KOHLER	GREEN K-2032 VITREOUS CHINA-WAL; MOUNT ADA	0.5"	0.5"	1.5"

HOT WATER HEATER												
TAG No.	NO. OF ELEMENTS	FIXTURES SERVING	RATED GALLONS	MEASURED GALLONS	RECOVERY CAP. (GPH @ RISE)	TYPE	ELECTRICAL				MANUFACTURER & MODEL NO.	REMARKS
							VOLTS	PHASE	HERTZ	INPUT KW		
HWHT-1	3	3 COMP. SINK, JAR RINSE SINK, MOP SINK, EMPLOYEE HAND SINK, 1 COMP SINK	50	46	74 GPH @ 100'F	ELECTRIC WATER HEATER	208	3	60	18	A.O.SMITH DRE-52-18	-DIMENSIONS 27"DIA -HEATERS SHALL HAVE 150PSI WORKING PRESSURE.

GREASE INTERCEPTOR SCHEDULE						
ITEM	LOCATION	SERVICE	FLOW CAPACITY (GPM)	GREASE CAPACITY (LBS)	MANUFACTURER AND MODEL	REMARKS
GREASE INTERCEPTOR (GI-1)	BELOW GRADE	KITCHEN WASTE	75	175.6	SCHIER MODEL GB-3	BELOW GRADE MOUNTED WITH CUSSET SUPPORT KIT (SGK3) TRAP, SIZE- 37"(L) X 28"(W) X 21"(H)

EXPANSION TANK SCHEDULE							
TAG	LOCATION	SERVICE	CAPACITY (GALLONS)	MANUFACTURER & MODEL	DIMENSION (DIA X HEIGHT)	WEIGHT (LBS)	NO. OF EXPANSION TANK
ET-1	REFER FLOOR PLANS	HW	2	THERM-X-TROL ST-5	8" X 13"	5	1

RECIRCULATING PUMP SCHEDULE					
ITEM	QUANTITY	GPM	TOTAL HEAD (FT)	MOTOR HP	MANUFACTURER & MODEL NO
HWCP-1	1	2	10	0.115	GRUNDFOS UPS 15-18