

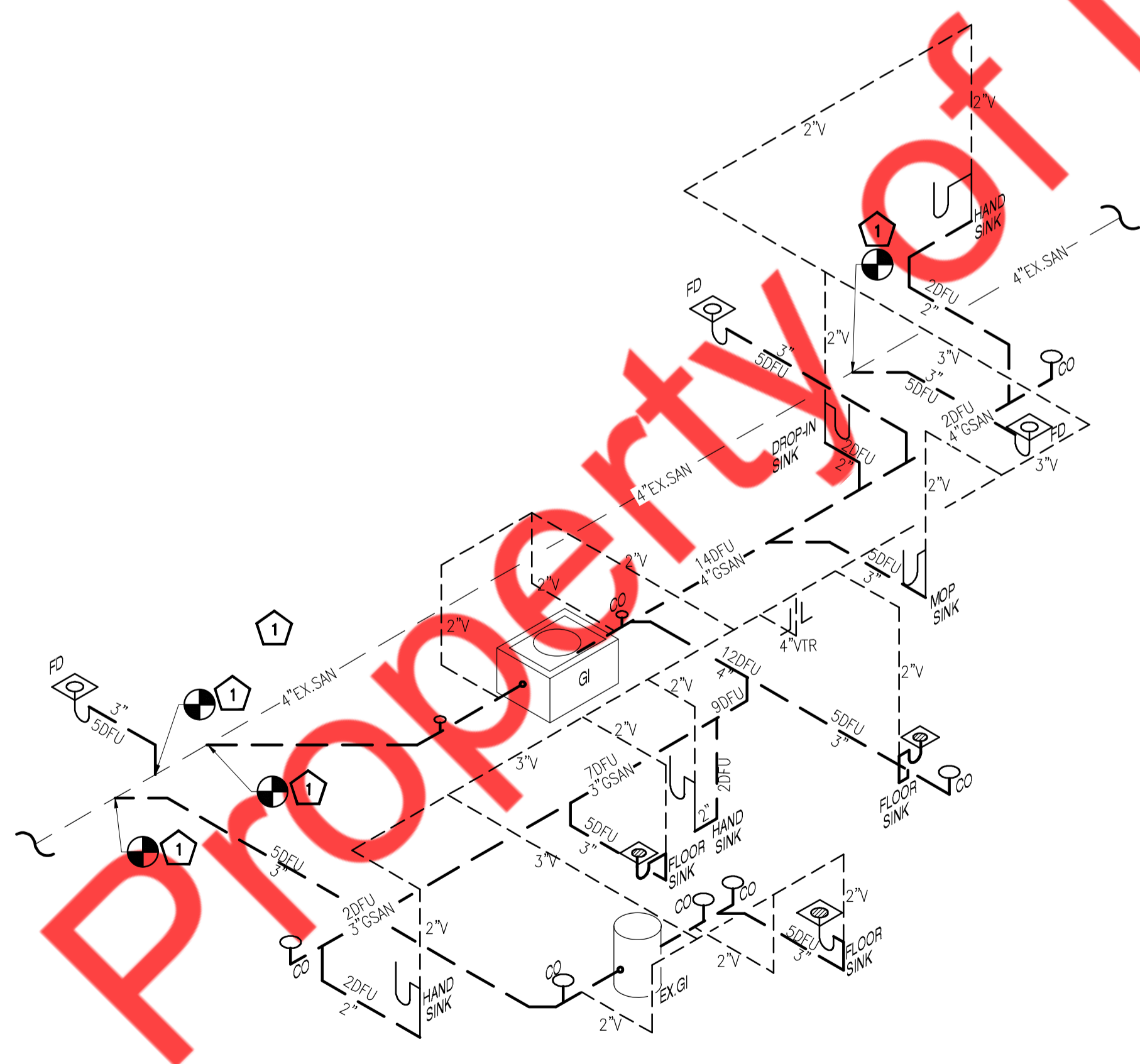
KITCHEN EQUIPMENT PLUMBING SCHEDULE					WATER		WASTE	
Item No.	Qty	Description	Manufacturer	Model	HOT	COLD	Direct	Indirect
47	3	HAND SINK	ADVANCE TABCO	7-PS-40	1/2"	1/2"	1 1/2"	
	2	THERMOSTATIC MIXING VALVES	ADVANCE TABCO	K-08				
55	1	DROP IN SINK	ADVANCE TABCO	DI-1-10-1X	1/2"	1/2"	1 1/2"	
	1	THERMOSTATIC MIXING VALVES	ADVANCE TABCO	K-08				
46	1	1 COMPARTMENT SINK	ADVANCE TABCO	FE-1-1812-18L-X			-	2"
46a	1	LEVER WASTE VALVE	T&S BRASS	0-61X-A22			-	2"
51	1	3 COMPARTMENT SINK	ADVANCE TABCO	FS-3-1824-18RL			-	3@1-1/2"
51a	1	PRE RINSE FAUCET	ADVANCE TABCO	K-116	1/2"	1/2"		
51b	1	FAUCET	ADVANCE TABCO	K-117-TS	1/2"	1/2"		
51c	1	LEVER WASTE VALVE	ADVANCE TABCO	K-5			-	2"
52	1	MOP SINK	BK RESOURCES	BKMS2-1620-6-KIT			3"	
36	2	WATER HEATER	RINNAI	TRW02STIN	3/4"	3/4"		
73	1	DISH WASHER	CMA	180 UC	1/2"			
		FLOOR SINKS	ZURN	Z1900-23-31 (ZS1900 IF IN EXPOSED AREAS)				
		FLOOR DRAINS*	ZURN	ZS415 W/ TYPE BS STRAINER				

+ HOT WATER 140 DEG
*PROVIDE TRAP PRIMERS FOR ALL FLOOR DRAINS

BATHROOM PLUMBING SCHEDULE				WATER		WASTE		
Item No.	Qty	Description	Manufacturer	Model	Hot	Cold	Direct	Indirect
A	1	LAVATORY	EXISTING TO REMAIN	EXISTING TO REMAIN			E	
	1	LAVATORY FAUCET	EXISTING TO REMAIN	EXISTING TO REMAIN	E	E		
	1	THERMOSTATIC MIXING VALVE	EXISTING TO REMAIN	EXISTING TO REMAIN	E	E		
	1	INSULATED PLUMBING COVERS	EXISTING TO REMAIN	EXISTING TO REMAIN				
B	1	WATER CLOSET	EXISTING TO REMAIN	EXISTING TO REMAIN	E	E	E	

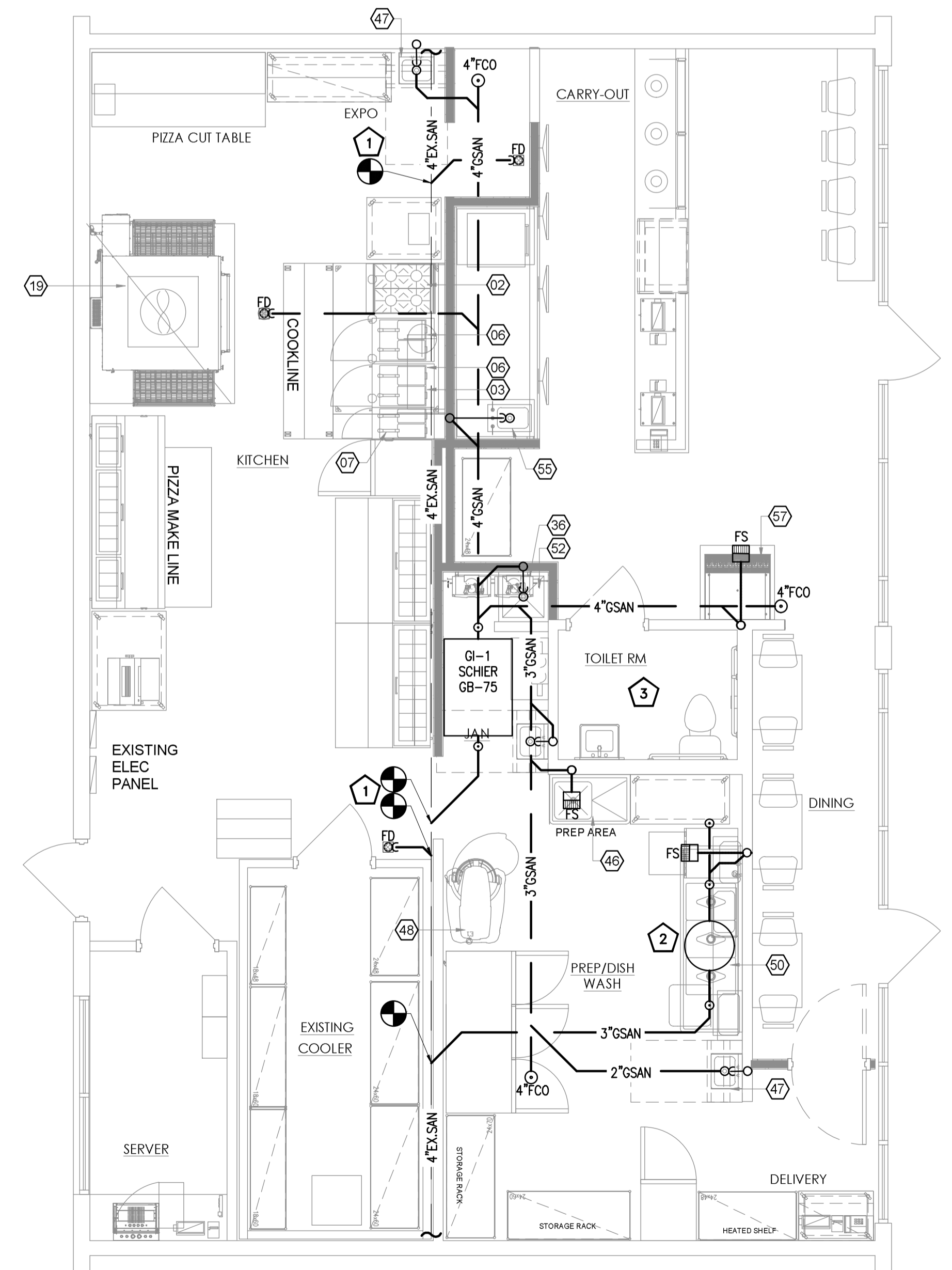
SANITARY PLAN KEY NOTE

- 1 CONNECT NEW 4" SANITARY WASTE PIPING TO EXISTING SANITARY WASTE LINE OF ADEQUATE SIZE. CONTRACTOR TO FIELD VERIFY EXACT SIZE, LOCATION, ROUTING AND INVERT ON SITE.
- 2 EXISTING GREASE INTERCEPTOR AND PIPING TO REMAIN. CONTRACTOR TO FIELD VERIFY EXISTING PIPING CONDITION. REPLACE IF REQUIRED.
- 3 EXISTING FIXTURES AND PIPING TO REMAIN. CONTRACTOR TO FIELD VERIFY EXISTING PIPING CONDITION. REPLACE IF REQUIRED.



SANITARY RISER

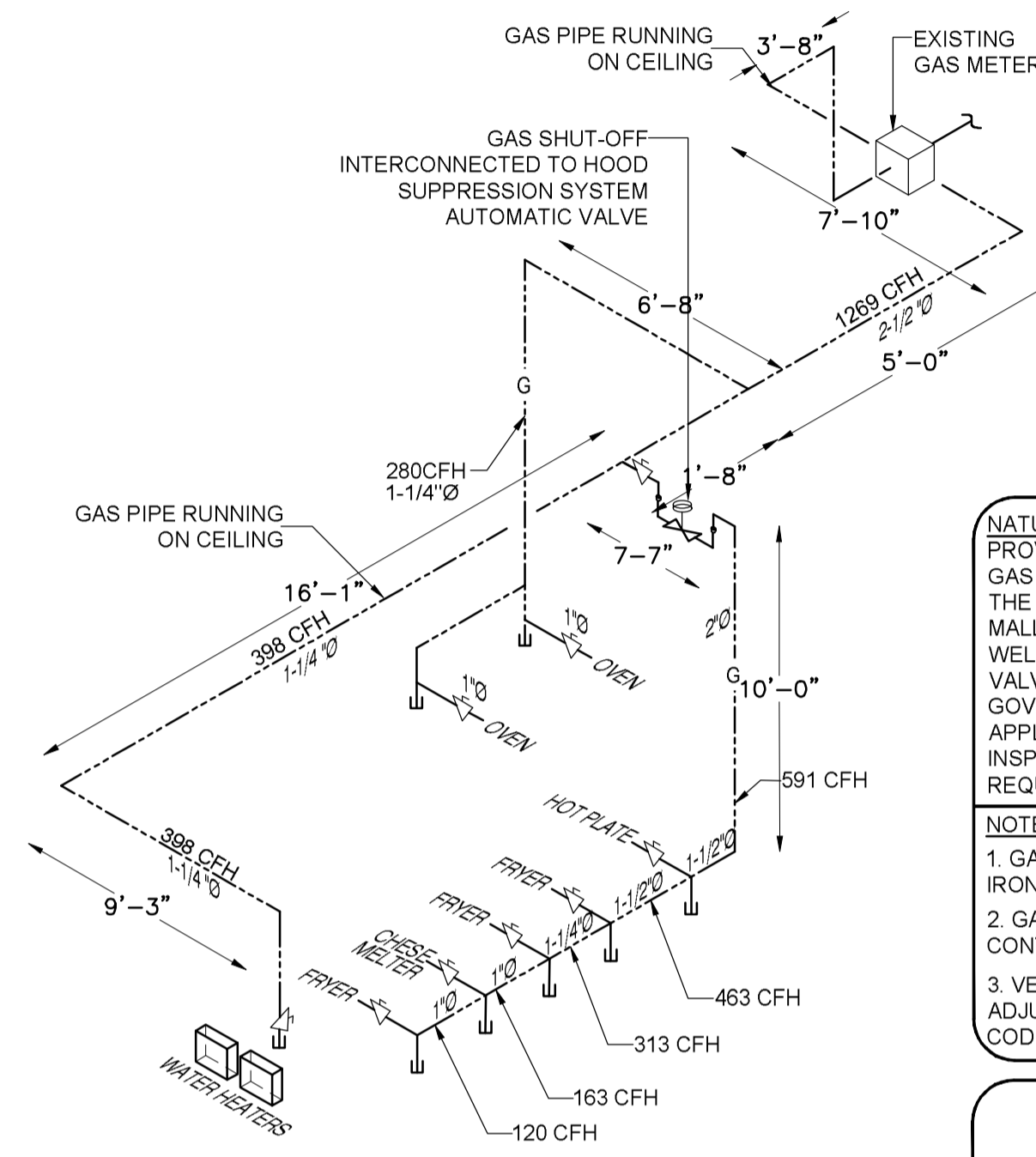
SCALE
N.T.S.



SANITARY PLAN

SCALE
1/4" = 1'-0"

GAS SCHEDULE						
ITEM NO.	QTY.	DESCRIPTION	MANUFACTURER	MODEL	SIZE	BTU/HR.
2	1	HOT PLATE	ATOSA USA	ACHP-4	3/4"	128,000
3	1	CHEESE MELTER	ATOSA USA	ATCM-36	3/4"	43,000
6	2	FRYER	VULCAN	LG500	3/4"	300,000
7	1	FRYER	VULCAN	LG400	3/4"	120,000
-	2	WATER HEATER	RINNAI	TRW02STIN	3/4"	398,000
19	1	OVEN	XLT OVENS	X3H-3855-01108	1"	280,000
TOTAL LOAD						1269000



NATURAL GAS PIPING SYSTEM
 PROVIDE A COMPLETE GAS PIPING SYSTEM TO SERVE GAS EQUIPMENT FURNISHED BY OTHERS, AS NOTED ON THE DRAWINGS. PROVIDE EITHER THREADED STEEL OR MALLEABLE IRON PIPE WITH MALLEABLE FITTINGS OR WELDED STEEL. PROVIDE ALL UNIONS, SHUT-OFF VALVES AND DIRT LEGS REQUIRED BY NFPA-54 AND GOVERNING LOCAL CODES AND AT EACH GAS APPLIANCE CONNECTION. PROVIDE ALL TESTS, METERS, INSPECTIONS, HANGERS AND EQUIPMENT CONNECTIONS REQUIRED FOR A COMPLETE AND OPERATING SYSTEM.

- NOTES:**
1. GAS PIPING TO BE SCHEDULE 40 STEEL PIPE W/125 CAST IRON SCREW FITTINGS
 2. GAS SYSTEM TO BE INSTALLED BY QUALIFIED LICENSED CONTRACTOR.
 3. VERIFY ALL EQUIPMENT BTU'S PRIOR TO INSTALLATION. ADJUST PIPE SIZE ACCORDING TO 2020 FLORIDA FUEL GAS CODE, TABLE 402.4(2).

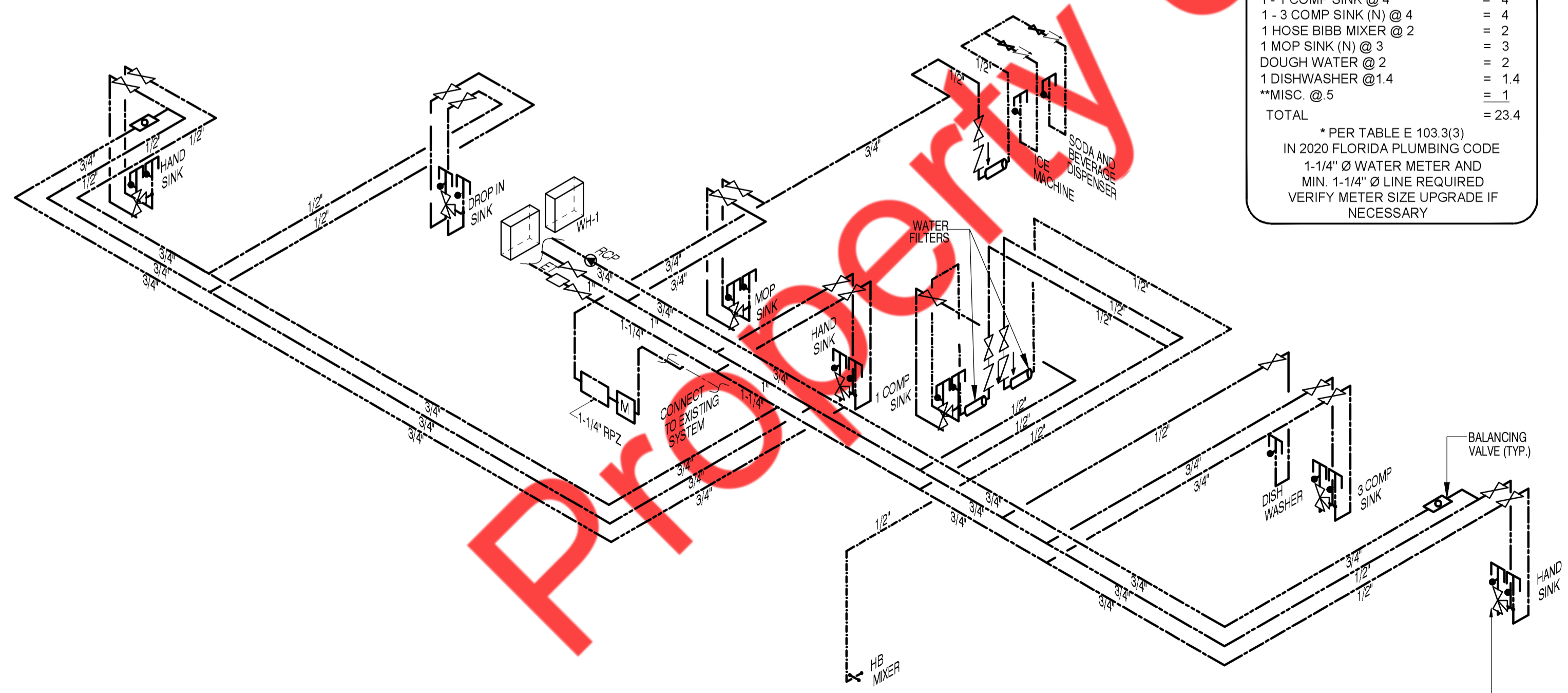
GAS PIPE SIZING PER TABLE 402.4(2) 2020 FLORIDA FUEL GAS CODE
 EQUIVALENT LENGTH OF PIPE =
 $15 + 4 + 8 + 5 + 2 + 17 + 9 = 60$
 + FITTINGS (+40%) = 84 FEET

GAS RISER SCALE N.T.S. **3**

FIXTURE FACTOR VALUE *

3 HAND SINKS (N) @ 2	= 6
1-1 COMP SINK @ 4	= 4
1-3 COMP SINK (N) @ 4	= 4
1 HOSE BIBB MIXER @ 2	= 2
1 MOP SINK (N) @ 3	= 3
DOUGH WATER @ 2	= 2
1 DISHWASHER @ 1.4	= 1.4
**MISC. @ 5	= 1
TOTAL	= 23.4

* PER TABLE E 103.3(3) IN 2020 FLORIDA PLUMBING CODE
 1-1/4" Ø WATER METER AND MIN. 1-1/4" Ø LINE REQUIRED
 VERIFY METER SIZE UPGRADE IF NECESSARY



ASSE 1070 COMPLIANT THERMOSTATIC MIXING VALVE SET TO 110°F FOR LAVATORIES AND HAND SINK AND 120°F FOR PREP SINK (TYP)

WATER RISER SCALE N.T.S. **2**

- PLUMBING KEY NOTE**
1. CONNECT NEW 1-1/4" CW LINE TO EXISTING WATER MAIN LINE. CONTRACTOR TO FIELD VERIFY SIZE AND LOCATION OF WATER LINE. PROVIDE RPZ AS PER LOCAL BUILDING CODE IF NOT PROVIDED.
 2. G.C TO INSTALL A WATER SUBMETER AND REMOTE READER DEVICE INSIDE TENANT'S LEASED PREMISES. THE REMOTE READER DEVICE MUST BE INSTALLED AT AN ACCESSIBLE LOCATION SO THAT IT CAN BE MANUALLY READ.
 3. CONNECT NEW 2-1/2" GAS PIPING TO EXISTING GAS METER. CONTRACTOR TO FIELD VERIFY SIZE, PRESSURE, CAPACITY AND LOCATION IN FIELD WITH UTILITY COMPANY. UPDATE GAS METER CAPACITY IF REQUIRED.



WATER/GAS PLAN SCALE 1/4" = 1'-0" **1**