

ULTRA LOW ENERGY BUILDING SOLUTIONS

BUILD BIGGER, USE LESS.

New York City's Ultra Low Energy Building (ULEB) program rewards efficient design with a **5% Floor Area Ratio (FAR) bonus** for projects that exceed the NYC Energy Code by at least **15%.**

NY Engineers helps you unlock this bonus through expert modeling, smart strategy, and seamless regulatory navigation.

We help you build more by proving you use less – **less energy, fewer emissions, and more usable space.**

OUR APPROACH

- **Code-Compliant Modeling**
DOB-ready energy models that meet ULEB standards the first time.
- **Design-Integrated Strategy**
Early collaboration to optimize energy performance and system sizing
- **Streamlined Submissions**
Clear documentation and proactive support throughout the approval process
- **Future-Ready Results**
ULEB compliance that supports long-term carbon and ESG goals

Questions **NY Engineers** Can Help You Answer

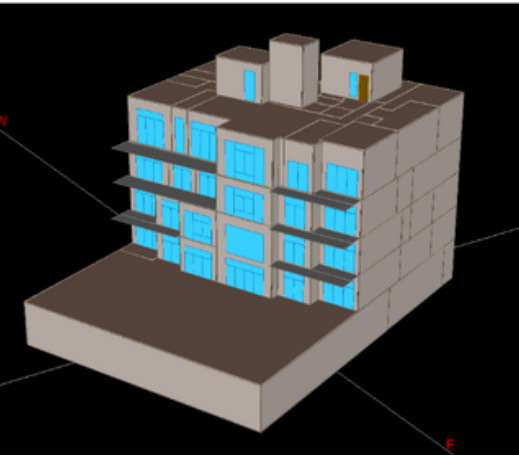
- Are we eligible for the ULEB zoning bonus?
- How can we exceed energy code without overbuilding?
- When should we start modeling to stay aligned with design and zoning goals?
- How do we ensure a smooth review with DOB?
- Can our energy strategy also support Local Law 97 compliance?



CASE STUDIES

These successful projects demonstrate how NY Engineers helps clients unlock the full benefits of NYC's ULEB program.

From strategic modeling to DOB approval, our team delivers the technical expertise and project support needed to exceed code, maximize energy savings, and secure valuable FAR bonuses.



17.65% SAVINGS

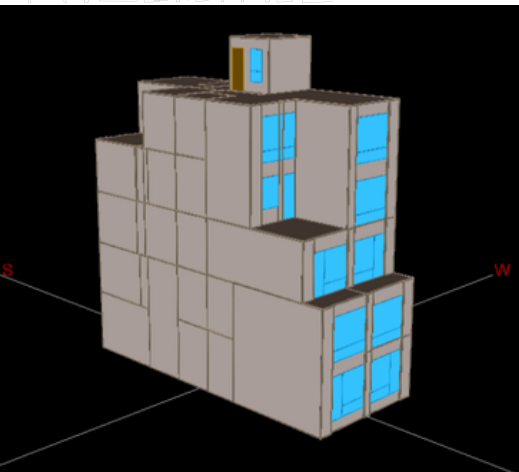
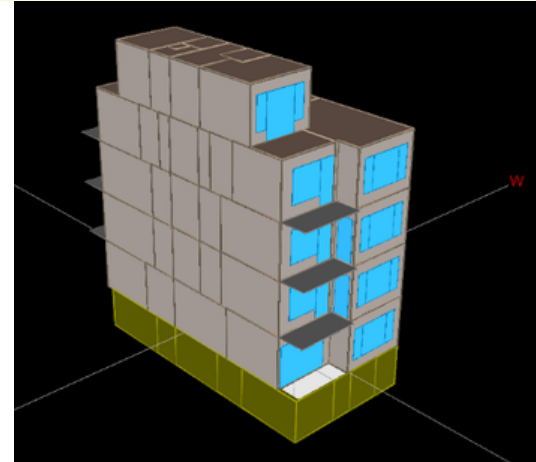
Multifamily Building | (5 – Story) | 24, 205 SF

- Opaque envelope performance exceeds code baseline
- HVAC EERs/COPs exceed code minimums
- Window Wall Ratio (WWR): 22%
- Electric Hot Water Has higher COP than code minimum.
- Interior Lighting LPD 22% below code thresholds.

21.73% SAVINGS

Multifamily Building | 4 – Story + Penthouse | 5,261 SF

- Opaque envelope performance exceeds code baseline
- HVAC EERs/COPs exceed code minimums
- Window Wall Ratio (WWR): 18.2%
- Electric Hot Water Has higher COP than code minimum.
- Exterior Lighting LPD 87% below code thresholds.



28.49% SAVINGS

Multifamily Building | (5 – Story) | 6,790 SF

- Opaque envelope performance exceeds 22 % over code baseline
- HVAC EERs/COPs exceed code minimums
- Electric hot water has a higher COP than the code minimum.
- Exterior lighting LPD is 23% below code thresholds.

CONTACT US

Keith Fink

📞 (786) 788-0295

✉ inquiry@ny-engineers.com

🌐 www.ny-engineers.com